



Personal Use Fuelwood Cutting Areas



Map: Mayo / Silver Trail 1
Location: Silver Trail

Map produced on: April 03, 2025
Map expires on: March 31, 2026


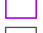



Personal Use Fuelwood Areas

-  Designated Areas with additional terms and conditions
-  Designated Areas




Features of Interest

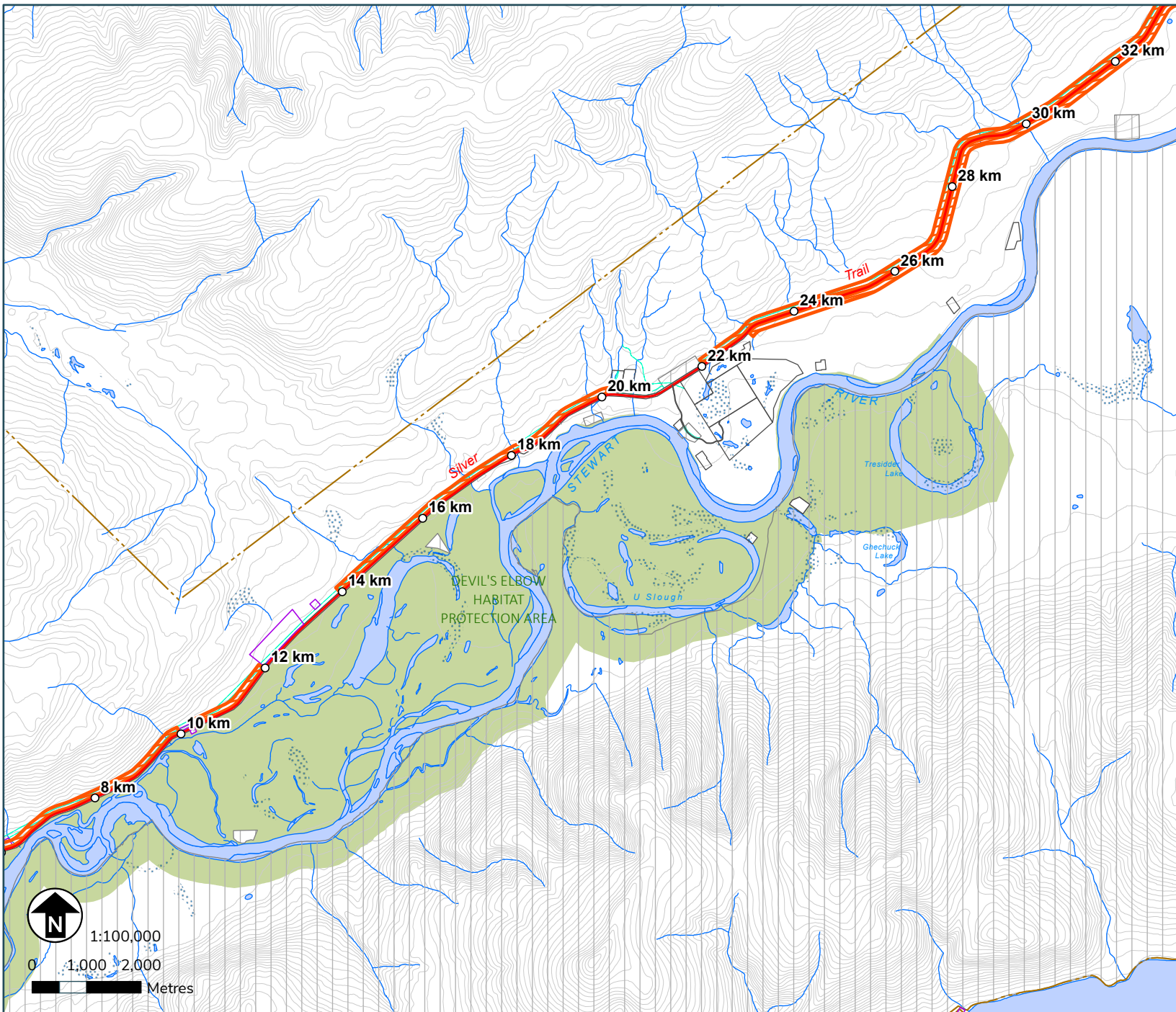
-  Gate Locations
-  Designated Access Points

Land Tenure

-  Municipal Boundaries
-  Land Dispositions
-  Surveyed Land Parcels
-  Land Notations
-  Parks and Protected Areas

First Nation Settlement Lands

-  Surveyed First Nation Settlement Lands
-  Unsurveyed FN Interim Protected Lands
-  Unsurveyed FN Settlement Lands

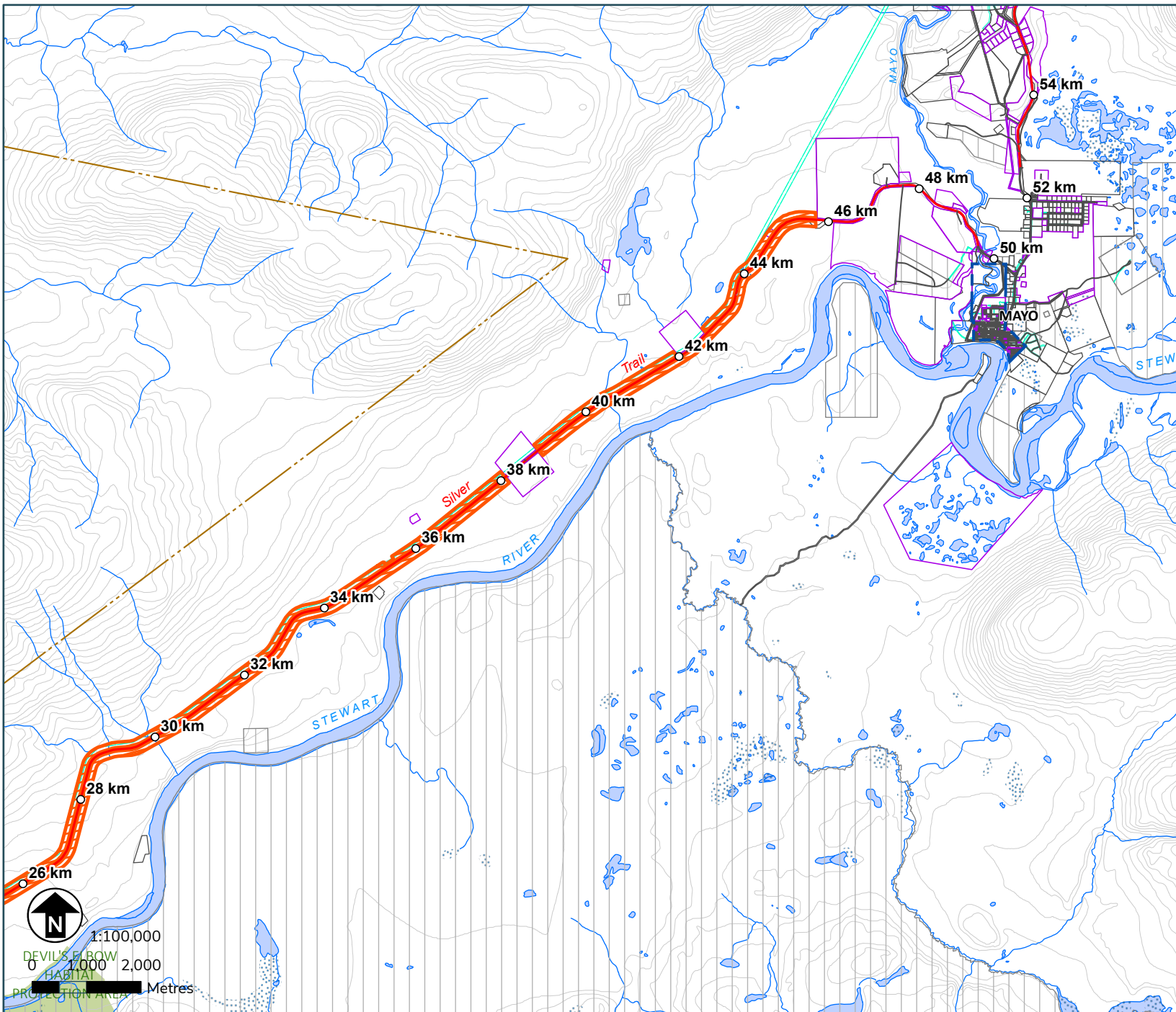


Terms & Conditions Reference:

N/A

This map is not your permit. Permits can be acquired at Compliance, Monitoring and Inspections offices or online. Terms and conditions apply to all permits.
 - To view up-to-date maps or apply online, please visit: yukon.ca
 - For support email: forestry@yukon.ca
 Data Sources: Yukon Government, Geomatics Yukon, and Forest Management Branch





Personal Use Fuelwood Cutting Areas

Map: Mayo / Silver Trail 2

Location: Mayo / Silver Trail

Map produced on: April 03, 2025

Map expires on: March 31, 2026

Personal Use Fuelwood Areas

Designated Areas with additional terms and conditions

Designated Areas

Features of Interest

Gate Locations

Designated Access Points

Land Tenure

Municipal Boundaries

Land Dispositions

Surveyed Land Parcels

Land Notations

Parks and Protected Areas

First Nation Settlement Lands

Surveyed First Nation Settlement Lands

Unsurveyed FN Interim Protected Lands

Unsurveyed FN Settlement Lands



Terms & Conditions Reference:

N/A

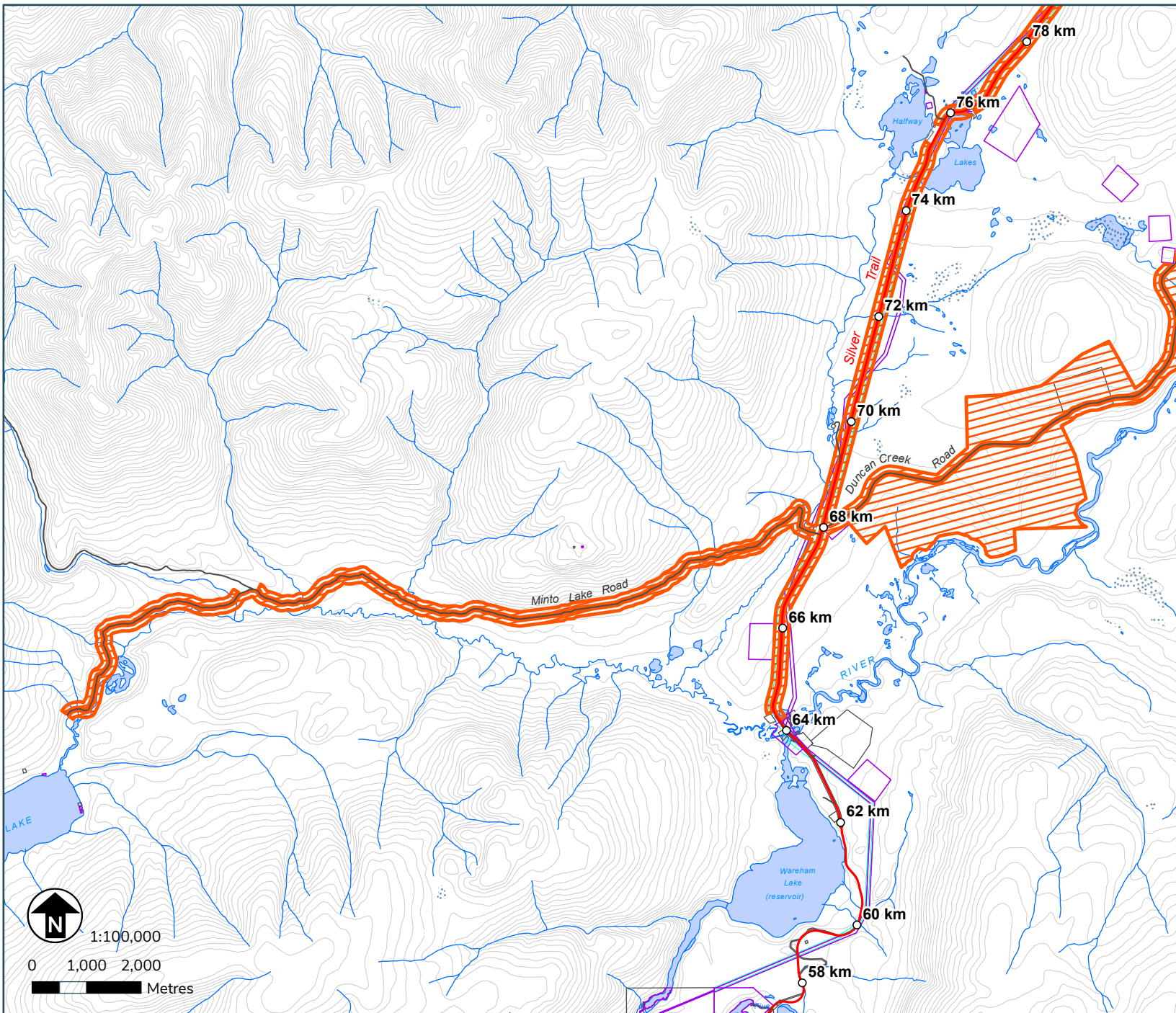
This map is not your permit. Permits can be acquired at Compliance, Monitoring and Inspections offices or online. Terms and conditions apply to all permits.

- To view up-to-date maps or apply online, please visit: yukon.ca

- For support email: forestry@yukon.ca

Data Sources: Yukon Government, Geomatics Yukon, and Forest Management Branch





Personal Use Fuelwood Cutting Areas

Map: Mayo / Silver Trail 3
 Location: Minto Lake Road / Halfway Lakes

Map produced on: April 03, 2025
 Map expires on: March 31, 2026

Personal Use Fuelwood Areas

- Designated Areas with additional terms and conditions
- Designated Areas

Features of Interest

- Gate Locations
- Designated Access Points

Land Tenure

- Municipal Boundaries
- Land Dispositions
- Surveyed Land Parcels
- Land Notations
- Parks and Protected Areas

First Nation Settlement Lands

- Surveyed First Nation Settlement Lands
- Unsurveyed FN Interim Protected Lands
- Unsurveyed FN Settlement Lands

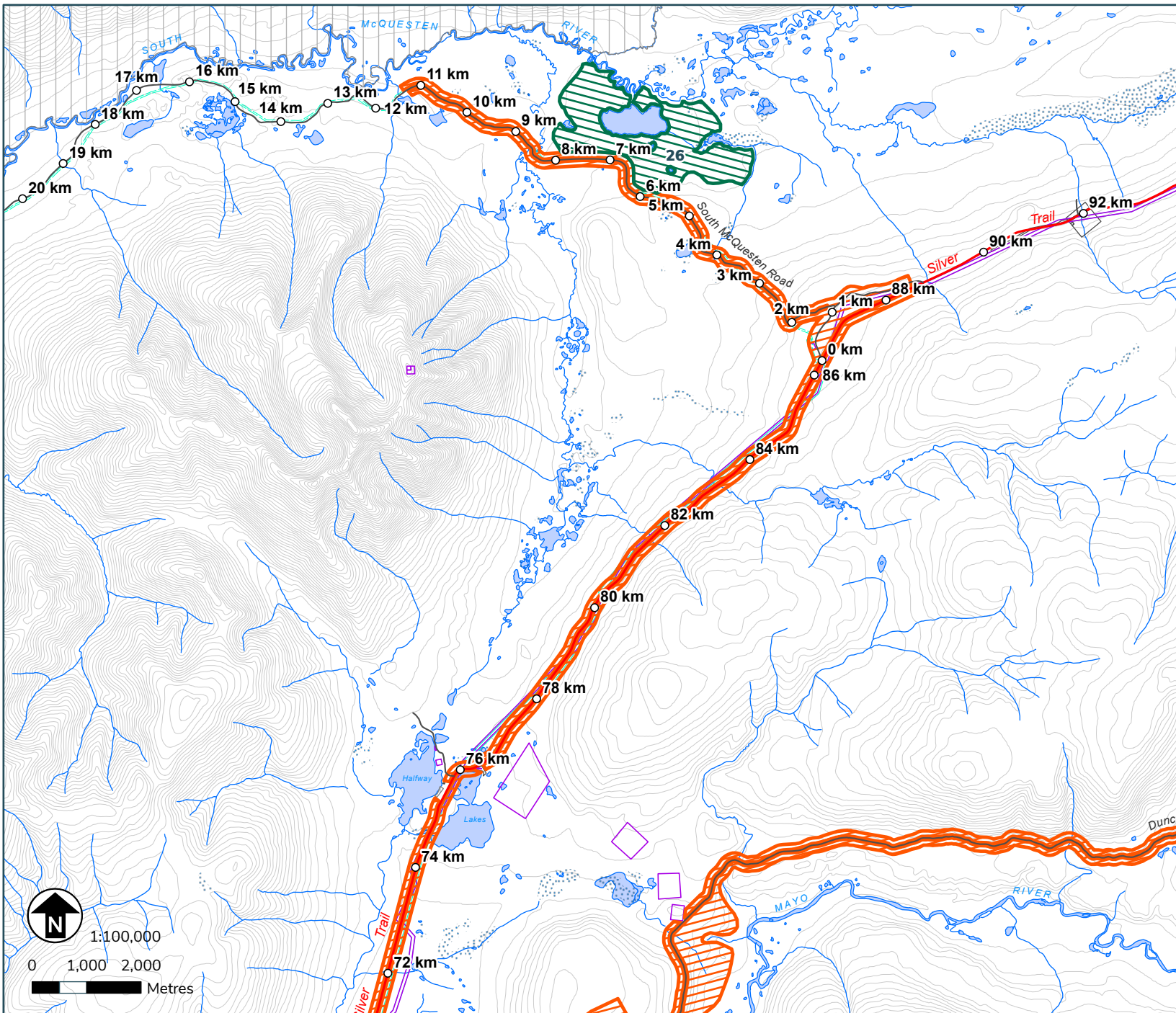


Terms & Conditions Reference:

N/A

This map is not your permit. Permits can be acquired at Compliance, Monitoring and Inspections offices or online. Terms and conditions apply to all permits.
 - To view up-to-date maps or apply online, please visit: yukon.ca
 - For support email: forestry@yukon.ca
 Data Sources: Yukon Forestry, Geomatics Yukon, and Forest Management Branch





Personal Use Fuelwood Cutting Areas

Map: Mayo / Silver Trail 4
 Location: South McQuesten Road / Halfway Lakes

Map produced on: April 03, 2025
 Map expires on: March 31, 2026

Personal Use Fuelwood Areas

- Designated Areas with additional terms and conditions
- Designated Areas

Features of Interest

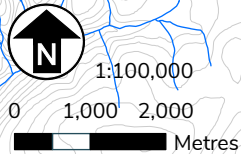
- Gate Locations
- Designated Access Points

Land Tenure

- Municipal Boundaries
- Land Dispositions
- Surveyed Land Parcels
- Land Notations
- Parks and Protected Areas

First Nation Settlement Lands

- Surveyed First Nation Settlement Lands
- Unsurveyed FN Interim Protected Lands
- Unsurveyed FN Settlement Lands

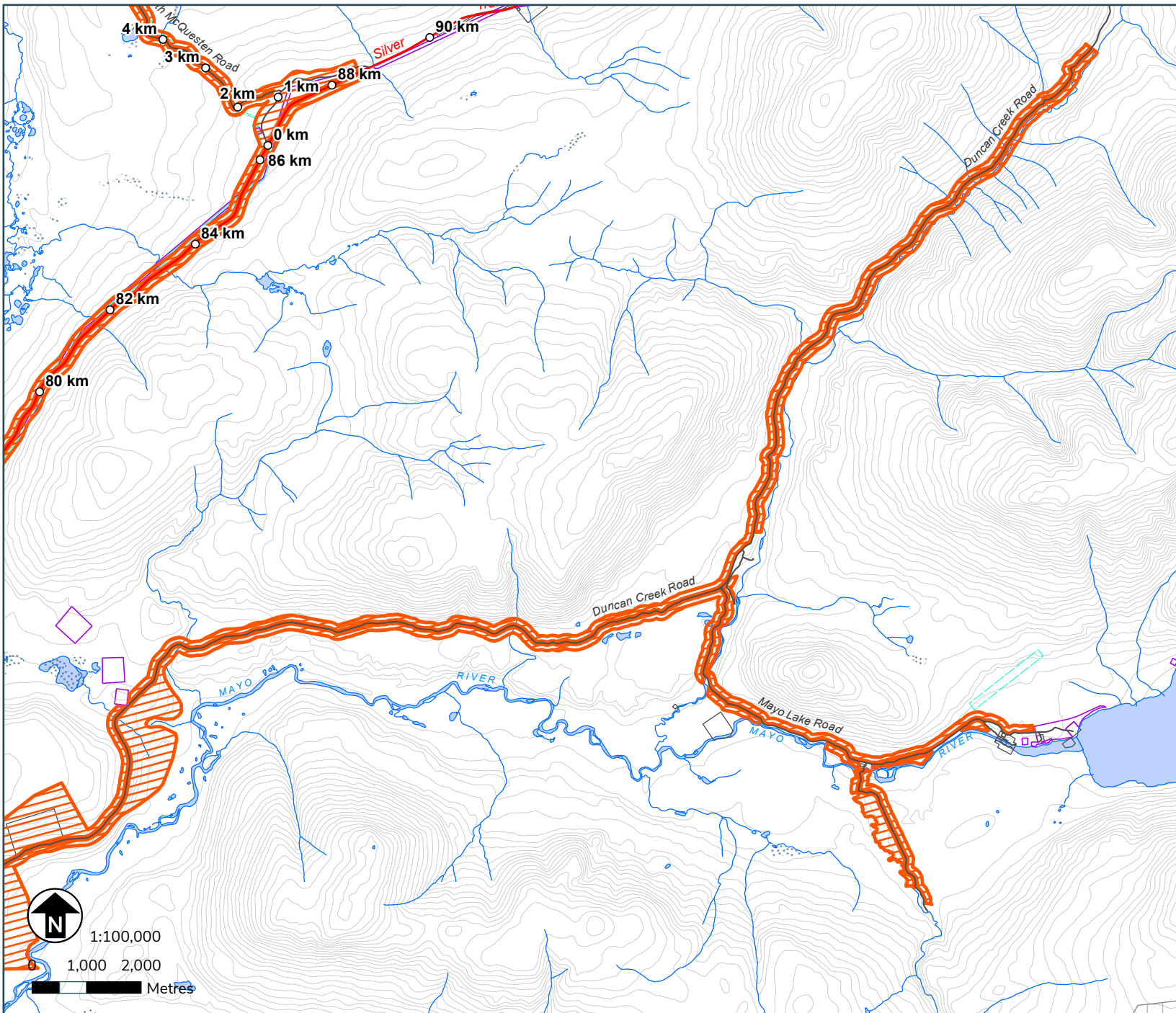


Terms & Conditions Reference:

26. Harvesting is restricted within 40m of lakes, rivers and streams.

This map is not your permit. Permits can be acquired at Compliance, Monitoring and Inspections offices or online. Terms and conditions apply to all permits.
 - To view up-to-date maps or apply online, please visit: yukon.ca
 - For support email: forestry@yukon.ca
 Data Sources: Yukon Government, Geomatics Yukon, and Forest Management Branch





Personal Use Fuelwood Cutting Areas

Map: Mayo / Silver Trail 5

Location: Duncan Creek Road

Map produced on: April 03, 2025
Map expires on: March 31, 2026

Personal Use Fuelwood Areas

- Designated Areas with additional terms and conditions
- Designated Areas

Features of Interest

- Gate Locations
- Designated Access Points

Land Tenure

- Municipal Boundaries
- Land Dispositions
- Surveyed Land Parcels
- Land Notations
- Parks and Protected Areas

First Nation Settlement Lands

- Surveyed First Nation Settlement Lands
- Unsurveyed FN Interim Protected Lands
- Unsurveyed FN Settlement Lands



Terms & Conditions Reference:

N/A

This map is not your permit. Permits can be acquired at Compliance, Monitoring and Inspections offices or online. Terms and conditions apply to all permits.

- To view up-to-date maps or apply online, please visit: yukon.ca
- For support email: forestry@yukon.ca

Data Sources: Yukon Government, Geomatics Yukon, and Forest Management Branch





Personal Use Fuelwood Cutting Areas

Map: Mayo / Silver Trail 6



Location: South McQuesten River / Christal Creek

Map produced on: April 03, 2025
Map expires on: March 31, 2026


Personal Use Fuelwood Areas

-  Designated Areas with additional terms and conditions
-  Designated Areas



Features of Interest

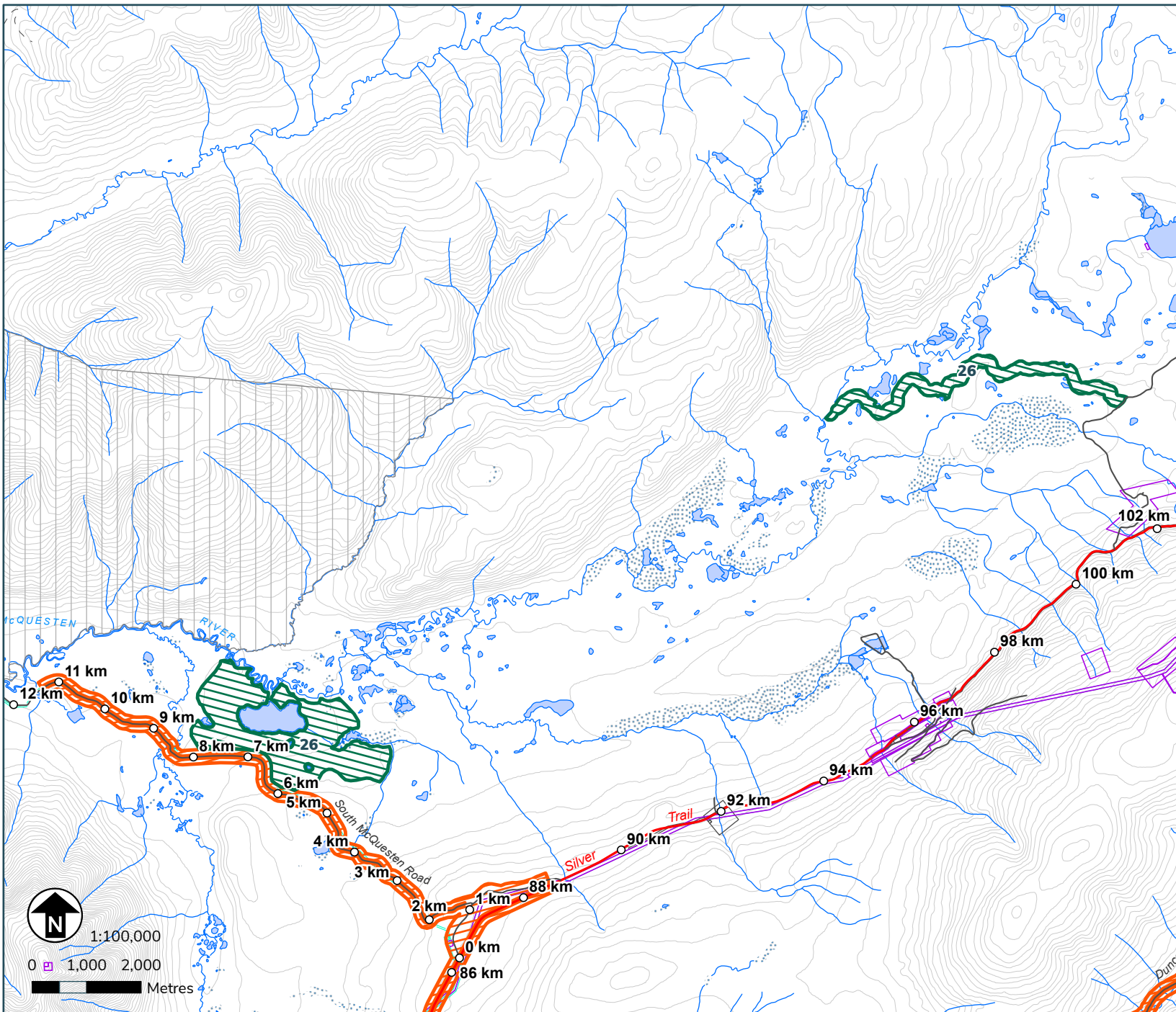
-  Gate Locations
-  Designated Access Points

Land Tenure

-  Municipal Boundaries
-  Land Dispositions
-  Surveyed Land Parcels
-  Land Notations
-  Parks and Protected Areas

First Nation Settlement Lands

-  Surveyed First Nation Settlement Lands
-  Unsurveyed FN Interim Protected Lands
-  Unsurveyed FN Settlement Lands



Terms & Conditions Reference:

26. Harvesting is restricted within 40m of lakes, rivers and streams.

This map is not your permit. Permits can be acquired at Compliance, Monitoring and Inspections offices or online. Terms and conditions apply to all permits.
- To view up-to-date maps or apply online, please visit: yukon.ca
- For support email: forestry@yukon.ca
Data Sources: Yukon Government, Geomatics Yukon, and Forest Management Branch

