

MOUNT LORNE DEVELOPMENT AREA REGULATION Schedule B O.I.C. 2006/087

ORIGINAL
SIGNED AND SEALED

May 12, 2006
Date

Geraldine Van Bibber
COMMISSIONER of the YUKON

Yukon
Energy, Mines & Resources
Sustainable Resources Division
Land Planning Branch
cw 10 February, 2026

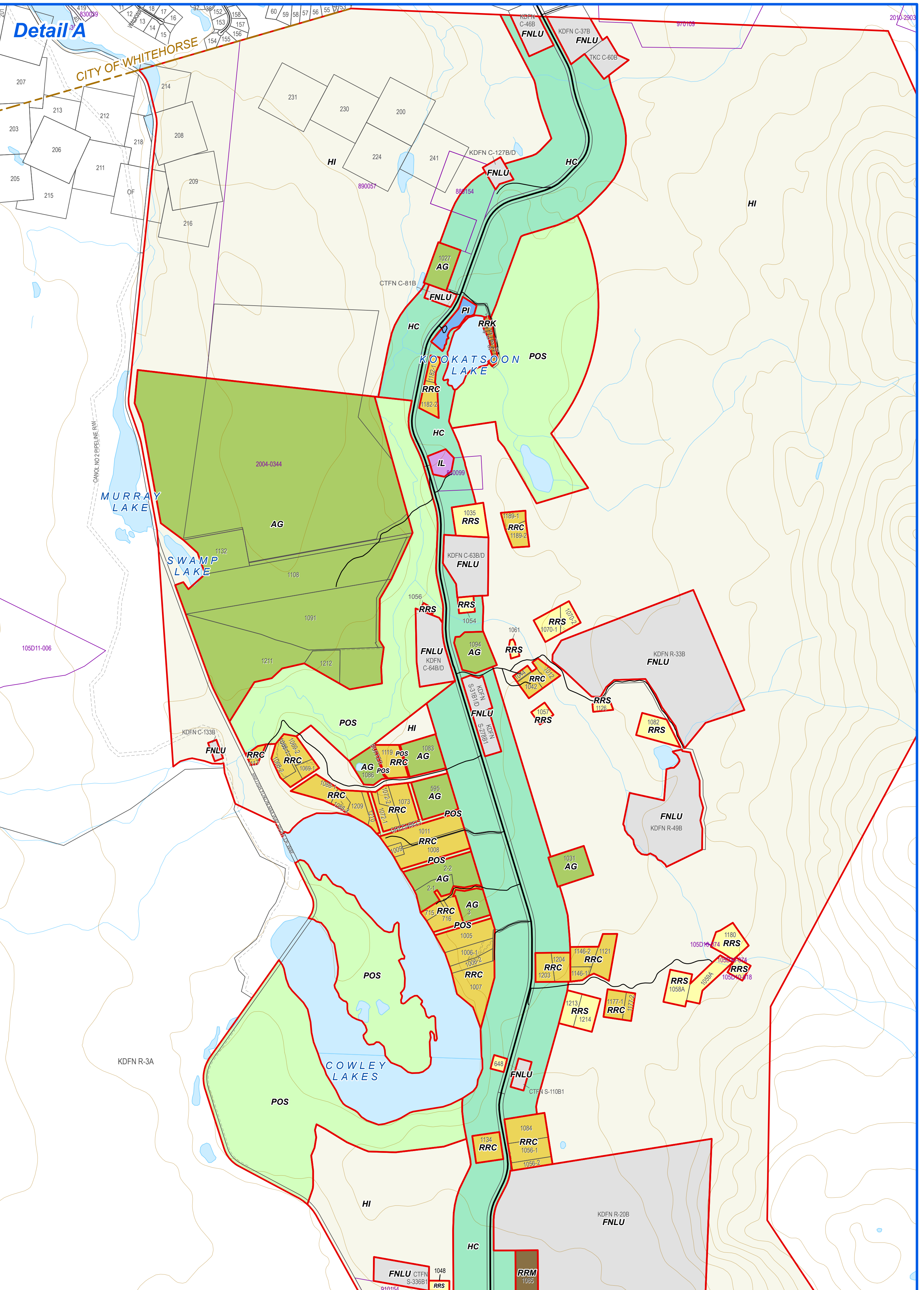
AMENDMENTS

Date	O.I.C.	Description
June 25, 2010	2010/123	Boundary increase comprising of Access Road and Lots 1000 & 1001 on SW end of Boundary zoned HI & RRS respectively
March 10, 2014	2014/039	Lots 2-1, 2-2, and 3, Quad 105 D/10, rezoned from Rural Residential Clustered (RRC) to Agriculture (AG)
Oct 2014, June 2017 Jan 2018		Map cleanup - surveyed subdivision of properties rezoned from Rural Residential Secluded (RRS) to Rural Residential Clustered (RRC)
Apr 4, 2024	2024/56	Add Limited Industrial (LI) zone and rezone an area of Yukon Land at Km 151, North Klondike Hwy from HC to IL

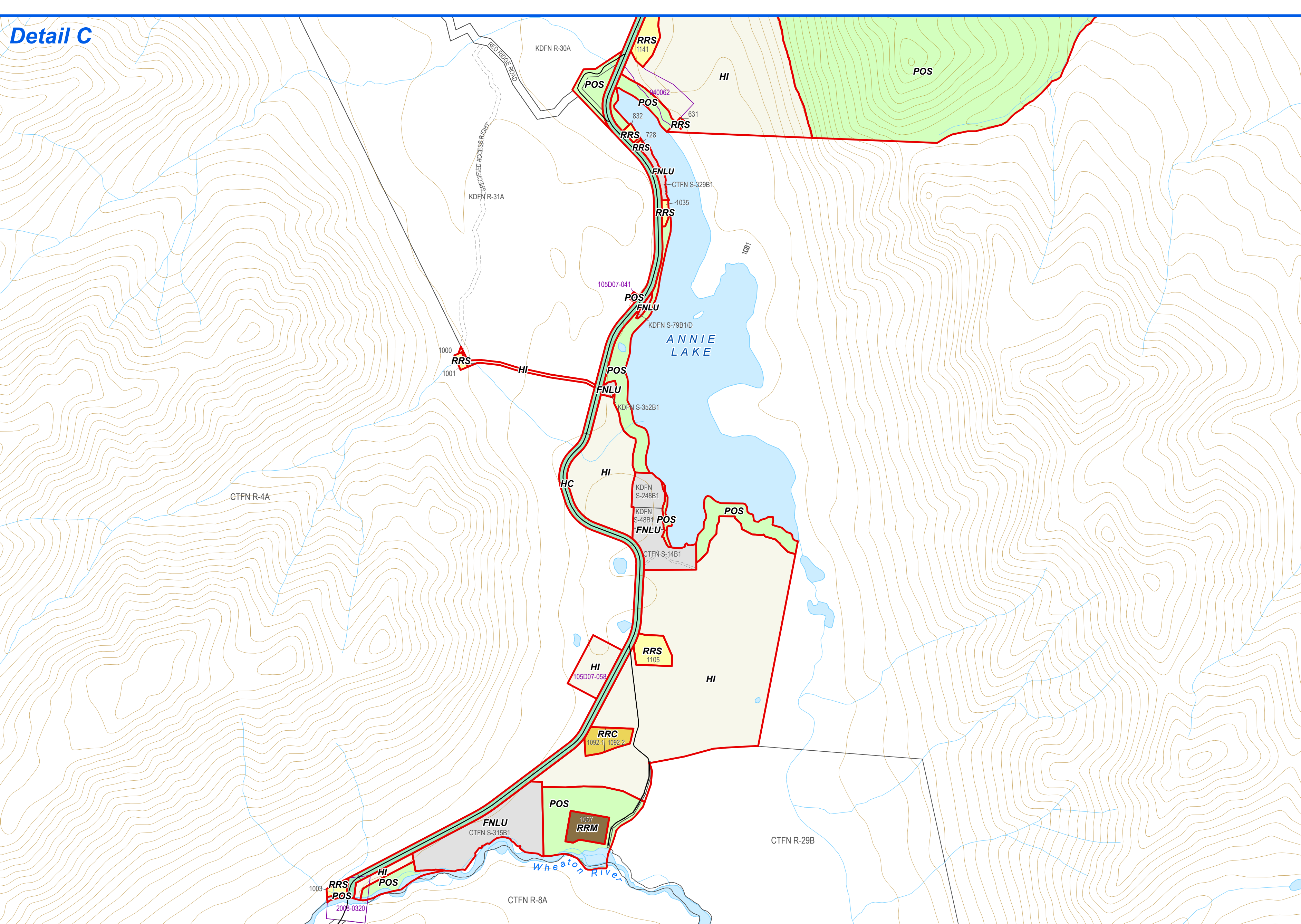
ZONING DESIGNATION

- RRS Rural Residential Secluded
- RRC Rural Residential Clustered
- RRK Rural Residential Kootatsoon
- RRM Rural Residential Multi
- AG Agriculture
- LI Limited Industrial
- PI Public and Institutional Use
- HC Highway Corridor
- FNLU First Nation Land Use
- POS Protected Open Space
- HI Hinterland

Detail A



Detail C



Detail B

