

On March 5, 2021, this plan was replaced with **A Path Forward: Next Steps** available at [Yukon.ca/path-forward-next-steps](https://yukon.ca/path-forward-next-steps)



# A Path Forward

Yukon's plan for lifting COVID-19 restrictions







## Message from the Premier

The COVID-19 pandemic changed how we live our lives, globally and here at home. In Yukon, the total number of COVID-19 cases remains low and we have not had a new case since April 20. This means the measures we have all taken to protect Yukoners and limit the spread of the virus are working. I know that these measures have been challenging and disruptive for all of us and that we are eager to get our communities back up and running. Also I know, deep in our hearts, no Yukoner wants to put a neighbour, friend or relative at risk. That is why our plan to lift restrictions will move forward in a steady and deliberate way.

Work is underway across the country to ensure a careful and coordinated approach to easing COVID-19 restrictions and reopening society and the economy. Recently all Canadian Premiers agreed on the principles that will guide the reopening process. They will ensure the process is accountable, flexible, based on science and evidence, and that the Canada-wide cooperation happening right now continues at every step along the way.

Yukon's reopening will happen in phases. We will continue to rely on a public health framework and the expertise of Yukon's Chief Medical Officer of Health. Make no mistake – we must be very cautious as we begin relaxing measures. If we move too quickly without the necessary planning and the right conditions in place, we risk undoing all of the good work that has helped keep the territory safe.

The greatest risk facing Yukon is importation of the virus. Our proposed way forward and our overall strategy plots a course to a “new normal” where restrictions are relaxed for Yukoners in the territory, but tight border controls are maintained to keep COVID-19 out. Our focus will continue to be on protecting our communities, our most vulnerable residents, and getting Yukoners moving again as quickly as possible.

Please know that the Government of Yukon is here to help you through these challenging times. We are supporting Yukon families, businesses, and workers to keep our communities strong and we will continue to do so as we move through each phase of this plan. The resilient spirit of the territory has been on full display for months now, and I am incredibly proud of our collective efforts and sacrifices made for the greater good.

A handwritten signature in black ink, consisting of stylized initials 'SS' followed by a flourish.

Premier Sandy Silver





## Message from the Chief Medical Officer of Health

As we welcomed 2020, few of us could have predicted what lay ahead. Five months into the year, life has changed profoundly for us all. Still, as always, life does carry on – births, celebrations, work, ritual, recreation, and deaths – but even the way that we commemorate and acknowledge life events is so very different from what it was on January 1.

We have been on a journey together since the beginning of the year, a journey which has changed paths several times.

Followed by a series of more restrictive measures, a decision taken on March 7 set Yukon on the right path to protecting its citizens from the cruel and capricious spread of COVID-19 that has been seen elsewhere in Canada, the United States and the world.

Our hospitals have been spared, and we are all grateful that so far, our residents in long term care facilities have not fallen prey to this pandemic. To date, only one case has emerged in our rural communities and like all the others, it was contained.

Early and strict closure of our borders with self-isolation of anyone coming into Yukon has helped us keep COVID-19 at bay. Encouraging people to stay close to home helped. Cooperation from all of Yukon citizens has made this success possible.

Success means we are now finally able to move progressively to a more accessible and open society: as much as we can afford to while staying safe from the pandemic.

I am pleased we are able to share the plans for a phased-in reopening of the territory.

Critical to this recovery is maintaining border control, keeping us in COVID containment mode but will allow us to ease restrictions within Yukon.

Our approach will be slow and measured. The reason we are moving slowly, deliberately, and gradually is because we want to ensure we have the protections in place for every Yukoner.

The way forward is clear and deliberate. We take a step and wait, and watch, and if all looks safe, we take another step. In this way, as services reopen, you can be confident that it is safe for you to attend, with the proper hygiene practices in place.

To open too quickly is to invite in the foe we have kept at bay and could signal a retreat. Just as the tortoise in the famous race, we will continue to win if we take the slow and steady pace.

My best wishes to all as we move slowly, safely, and steadily ahead.

A handwritten signature in black ink, appearing to read 'B. Hanley', with a long, sweeping underline that extends to the right.

Brendan E. Hanley MD CCFP(EM) MPH  
Chief Medical Officer of Health, Yukon

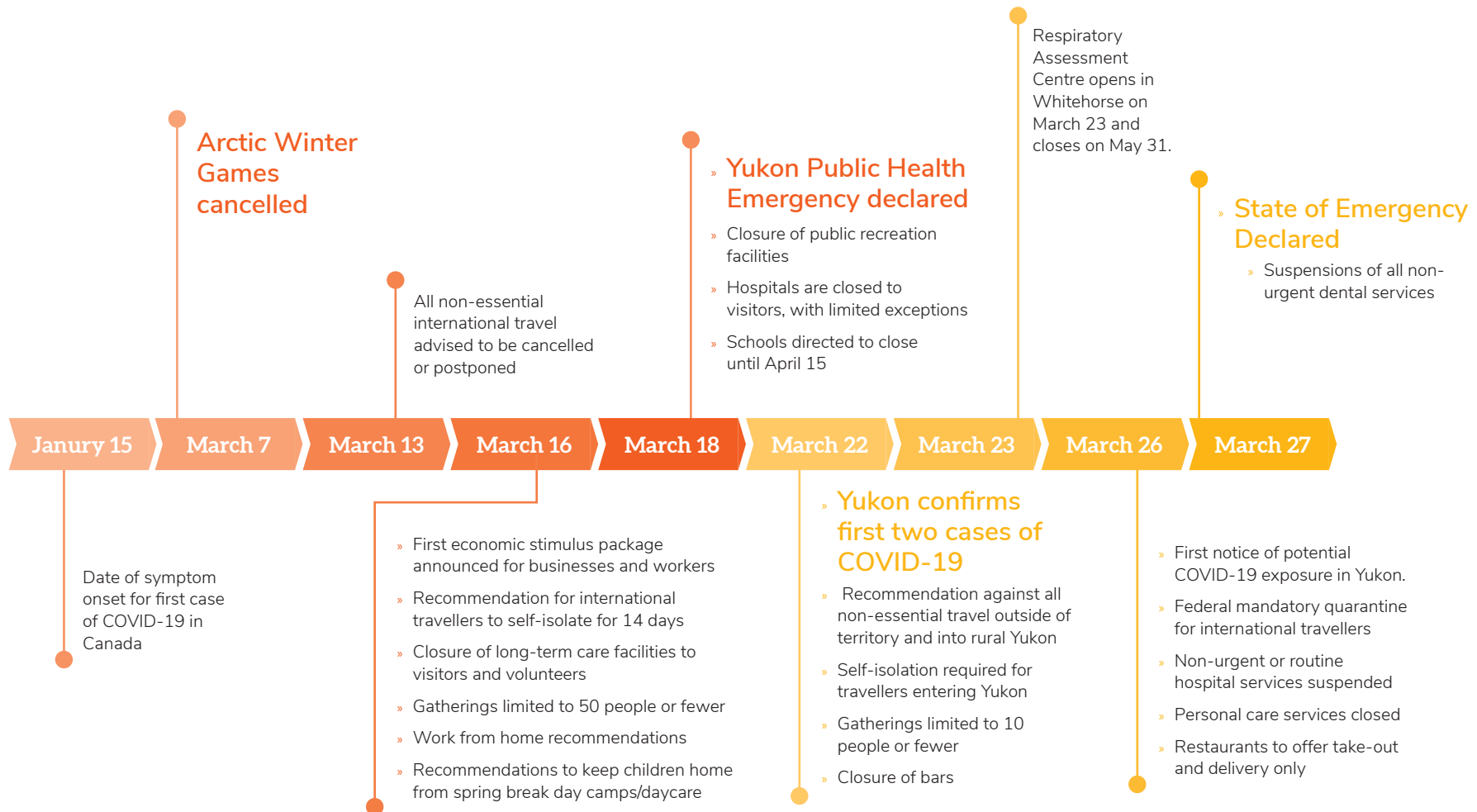


# Table of Contents

---

- Message from the Premier ..... iii
- Message from the Chief Medical Officer of Health ..... v
- COVID-19 timeline: public health measures, border security and major milestones ..... 1
- Purpose and principles of the plan ..... 3
- Personal responsibility for implementing the plan: your role in saving lives ..... 5
- A message from the Yukon Workers' Compensation Health and Safety Board ..... 8
- Community engagement ..... 9
- Criteria for transitioning between phases ..... 11
- Phased approach to Yukon's plan ..... 13
  - Phase 0: Response ..... 13
  - Phase 1: Restart ..... 15
  - Phase 2: Recover ..... 15
  - Phase 3: New normal ..... 15
- Public health measures for phased reopening ..... 18
- Testing and communicable disease control ..... 26
- Orders and directions for health protection, border control and civil society during a pandemic ..... 32
- Border restrictions, enforcement and transitting through Yukon ..... 33
- Yukon schools Kindergarten to Grade 12 ..... 34
- Protecting Yukon's vulnerable populations ..... 35
- Protections and support for Yukon First Nations and Yukon rural communities ..... 36
- Role of the public service in responding to COVID-19 ..... 37
- Overview of economic supports for Yukoners ..... 38
- The path forward ..... 46

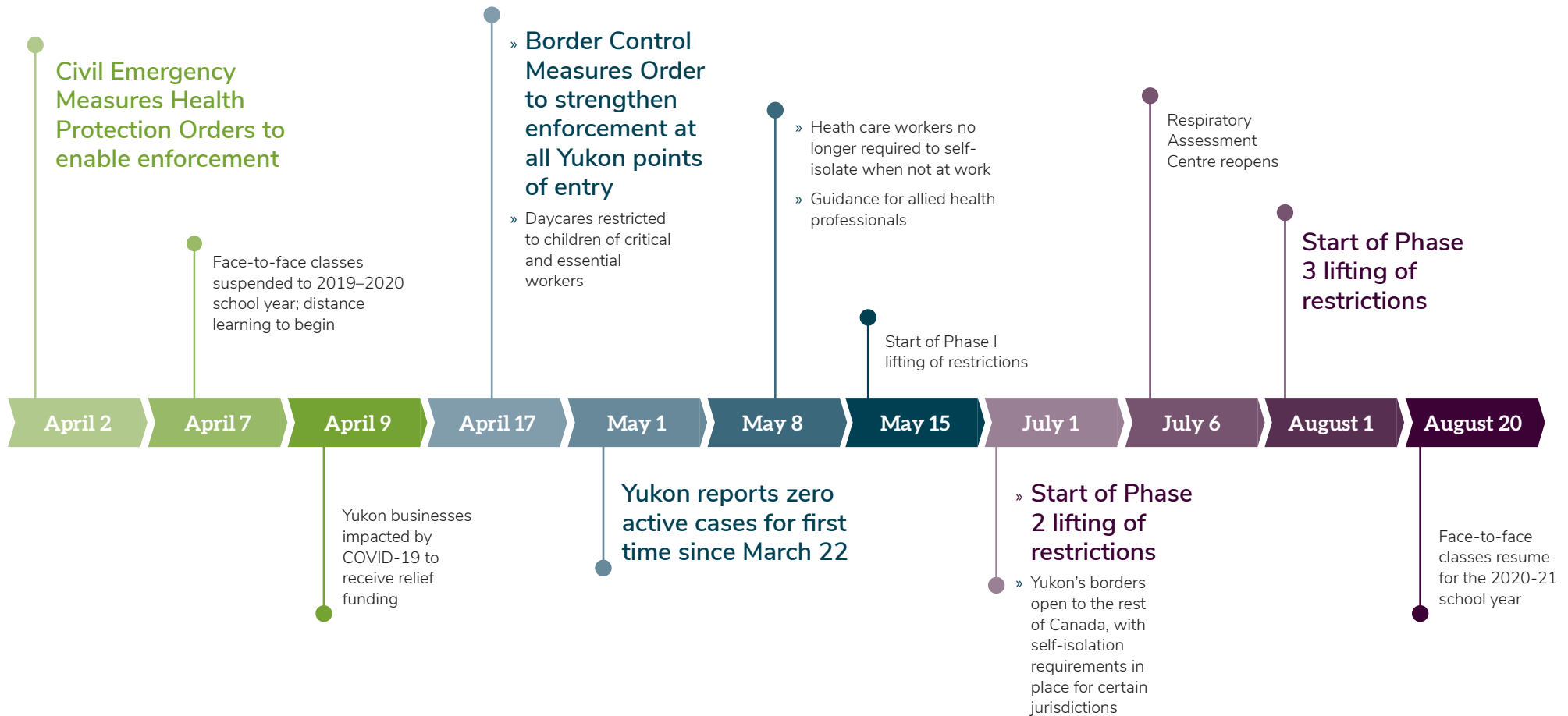
# COVID-19 timeline: public health measures, border security and major milestones





The Government of Yukon acted decisively to implement precautionary measures early on to prevent the spread of COVID-19, beginning with the cancellation of the 2020 Arctic Winter Games. Further preventative measures and Yukoners' commitment to following the six steps to staying safe has led

to Yukon's success in reducing the spread of COVID-19 in the territory. If we had not put restrictions in place when we did, by May 1, 2020 Yukon could have experienced upwards of 2,500 cases of COVID-19 according to modelling developed by the Health Emergency Operations Centre.



# Purpose and principles of the plan

The social and economic hardships of this pandemic are undeniable, and we recognize the strain that this has placed on our mental health, personal wellbeing, our families, our communities, our businesses and our way of life in Yukon.

By working together to implement public health measures and strengthen our health system capacity, we have succeeded in slowing down the number of new cases while protecting the most vulnerable Yukoners and communities. Since declaring both a Public Health Emergency and a State of Emergency in March of 2020, the sacrifices and discipline exercised by the Yukon public since that time has helped save lives. This point cannot be emphasized enough: our collective efforts are saving lives.

As the course of the epidemic evolves, the Government of Yukon, in consultation with the Chief Medical Officer of Health, is preparing a gradual approach to lifting public health measures, while keeping individuals and communities safe and healthy.

*A Path Forward* outlines the principles, public health criteria and indicators that will inform government decisions on readiness for the gradual lifting or re-introduction of public health measures. Because this pandemic is rapidly evolving and because so many of the actions Yukon takes will be informed by COVID-19 conditions in other provinces, territories and neighbouring jurisdictions, this Yukon Plan is a living document. Our aim is to continue preventing the introduction and spread of COVID-19 while balancing and addressing the many unintended social, economic and health consequences of existing restrictions.

<b>Principles of the plan</b>	
<b>Accountability and transparency</b>	The Government of Yukon will continue to be accountable, share data and monitor the impacts of public health measures through careful assessments. Protecting Yukoners by minimizing health risks and reducing social disruption will continue to be paramount and guide a gradual approach to loosening measures across each phase of the plan.
<b>Evidence-based</b>	Emerging scientific literature, public health monitoring data, and criteria developed by other Canadian jurisdictions will inform decisions to ease or reinstate measures based on risk assessments.
<b>Adaptability and proportionality</b>	Public health measures will be implemented, adapted, and relaxed based on the level of threat in a controlled and phased manner. This includes information on health system capacity, public health capacity, importation risk, and safety and economic needs that may change over time. Public health capacity for adequate testing, contact tracing, and case management will need to be maintained.
<b>Sufficient health resources</b>	Sufficient health system capacity to manage and treat cases will be required to protect front line workers and the public. Resources for acute care and testing, and supports for Yukoners required to self-isolate, are especially important in responding to any resurgence in COVID-19 infections.
<b>Engagement and collaboration</b>	Continued collaboration and frequent communication across all sectors and with community leaders, Yukon First Nations governments and the public will be key to ongoing success. Health and safety guidelines and plans for individuals, businesses and our health care system will be developed with input from partners. Yukoners will be encouraged to understand their essential role in helping to control the transmission of COVID-19 and will be provided with clear explanations underlying changing public health guidelines.



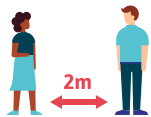
## Personal responsibility for implementing the plan: your role in saving lives

Every single person in Yukon has a part to play in stopping the spread of COVID-19. We are reliant on one another to keep the pandemic at bay, save lives and slowly reopen our society and economy by following the steps outlined in this plan. We must each understand that it is our own personal actions that will in large part determine whether we can move from our current state through the phases of this plan.

There are three factors to keep in mind that will help us carry out this responsibility.

# 1. Practise the 6 steps to staying safe

We must each practise the 6 steps to staying safe and encourage others to follow them too. We will need to follow these steps until we're in Phase 4 of this plan, as outlined later on. The 6 steps are:



- 1** Keep 2 metres (6 feet) away from everyone who's not a member of your bubble



- 4** Don't gather in groups of more than 10 people and remember to keep 2 metres (6 feet) apart



- 2** Wash your hands frequently with soap and water or use hand sanitizer with at least 60% alcohol



- 5** Limit travel to rural communities and be respectful when you're there



- 3** Stay home if you're feeling sick



- 6** Self-isolate if you've:
- returned to Yukon and have been outside of British Columbia, Nunavut or Northwest Territories in the last 14 days; or
  - been in contact with someone diagnosed with COVID-19



## 2. Look after others

COVID-19 affects everybody differently but what unites us is that we are in this fight together. This is a stressful time for everyone. It is important to remember that some of us were already vulnerable and struggling economically or with mental health challenges before the pandemic arrived. We are now all seeing our resiliency tested like never before. We must look after each other as a community, including those who come to the territory from outside to help us by providing critical and essential services or support to family members. This is something Yukoners are already good at and we can rely on our strong community spirit to help keep everyone afloat so we all arrive safely on the other side of the pandemic together.

## 3. Look after ourselves

Looking after our mental and physical health is part of how we should each respond to the pandemic. This includes those of us who have never accessed mental health services before. Experiencing fear, worry or stress is normal in any crisis. With all the change that COVID-19 has brought to our lives, the feeling that we are no longer in control and grieving for what we have lost is completely normal. Reaching out for mental health support is a sign of strength and courage, and will help us individually as well as those around us. There are plenty of mental health services available to support Yukoners, which can be found at [Yukon.ca/mental-wellness-support-during-covid-19](https://Yukon.ca/mental-wellness-support-during-covid-19).

## A message from the Yukon Workers' Compensation Health and Safety Board

Like essential services during the pandemic, all employers must demonstrate they can operate safely. In fact, all employers are required under the Occupational Health and Safety Act to ensure the safety of their employees at work.

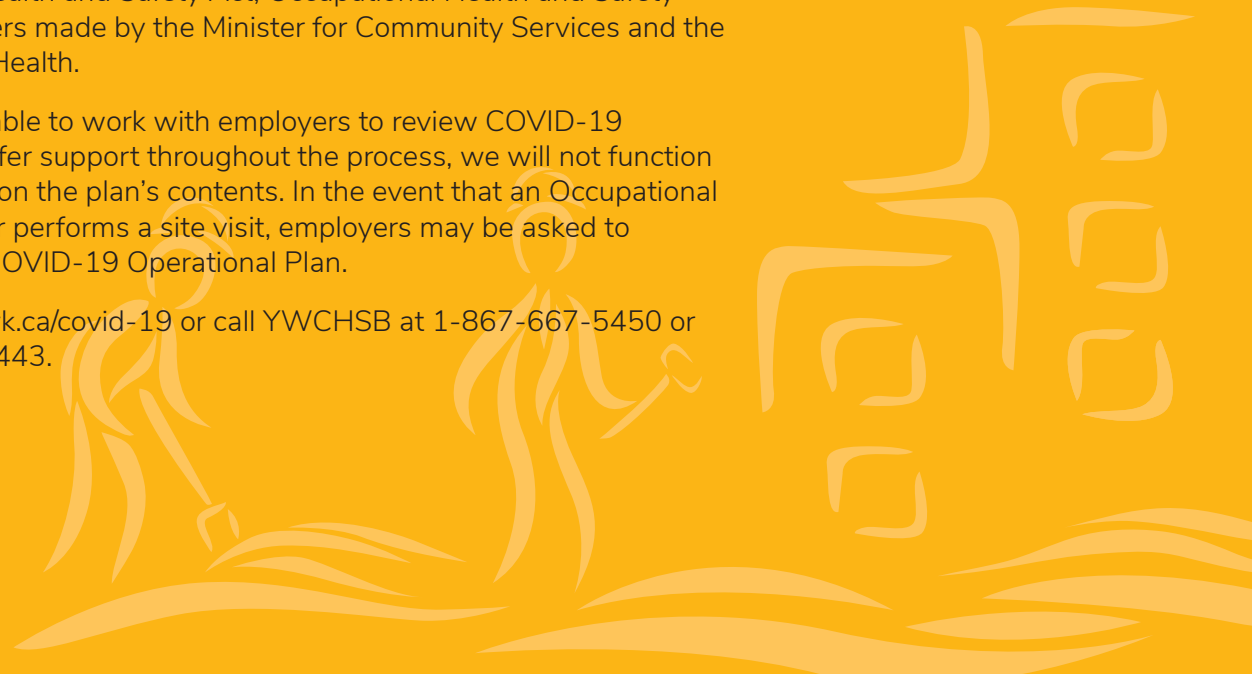
As local businesses, non-profits and organizations plan for their opening, Yukon Workers' Compensation Health and Safety Board (YWCHSB) is here to help.

YWCHSB will work with industry associations to identify appropriate information resources and ensure the direction and guidance they provide to their members meets the requirements set out by the Chief Medical Officer of Health. YWCHSB will work with employers and workers through information resources, consultation and workplace inspections to help them operate safely.

The Government of Yukon is requiring employers to develop a COVID-19 Operational Plan. The plan will help employers perform a hazard assessment to mitigate the risks of spreading COVID-19 in the workplace to ensure compliance with the Occupational Health and Safety Act, Occupational Health and Safety Regulations and the orders made by the Minister for Community Services and the Chief Medical Officer of Health.

While YWCHSB is available to work with employers to review COVID-19 Operational Plans and offer support throughout the process, we will not function as an approval authority on the plan's contents. In the event that an Occupational Health and Safety Officer performs a site visit, employers may be asked to produce a copy of their COVID-19 Operational Plan.

For resources, visit [wcb.yk.ca/covid-19](http://wcb.yk.ca/covid-19) or call YWCHSB at 1-867-667-5450 or toll free at 1-800-661-0443.



# Community engagement

Public and community engagement has become a bedrock of government decision-making and that commitment will be sustained throughout the duration of this pandemic and beyond. We recognize that the perspectives, experiences and advice of the public and community leadership can help shape the best direction forward for the territory. We will continue to be clear about the goals of engagement, and how input will be considered in our decision-making.

One of the necessary criteria for moving between each phase of this plan is engagement with community leadership.

Officials from the Government of Yukon's Department of Health and Social Services, Aboriginal Relations branch and Community Affairs branch will continue to work closely with Yukon First Nations governments, community and local government leaders as we begin implementing and further refining this plan.

We recognize that local businesses, service providers and residents will have many questions and will be seeking guidance at each step along the way; we are committed to supporting community leaders so that everyone is well equipped to respond to these pressures at the local level.

The fast pace of this emergency has demanded a very agile and accelerated approach to decision making and interventions to save lives. As we move toward relaxing health measures and a gradual lifting of restrictions, we are committed to involving and informing Yukon First Nations governments and all Yukon communities in the way forward. The goal is to ensure a high level of comfort, understanding and support for all public health strategies and decisions.







# Criteria for transitioning between phases

Decisions about when and how to move forwards or backwards through each of the phases of this plan will be guided by careful, in-depth risk assessments and the six criteria outlined below.

Continuous monitoring and evaluation of Yukon's current COVID-19 situation and response is the key to determining when it is safe to enter a new phase, and which measures to implement within each phase. It is important to note that the road to recovery and reinvigorating society and the economy may not be a one-way street; movement through and between each phase will be informed by criteria that will help us maintain appropriate protective measures at each step along the way. This also includes the circumstances under which some public health measures may need to be reinstated.



**Phase 1:  
Restart**

**CRITERIA FOR TRANSITION**

- Communities are able to comply with public health guidelines and Orders
- Ongoing engagement with community leaders
- Published guidelines are implemented and adhered to
- Following existing public health measures to ensure safety of staff and clients
- Continued capacity to contact trace
- Maintain testing turn around time
- Downward trend in epidemiology of COVID in Canada with focus on Northwest Territories, British Columbia, Alaska and Alberta
- Monitor data from border screening from point of entry
- Sufficient space to self-isolate is available
- Adequate personal protective equipment supply, ventilators, intensive care unit capacity, staffing
- Continued low to none cases hospitalized
- Downward trend in COVID-like respiratory illness compared to normal seasonal trends
- Addressing backlog of suspended services while still maintaining capacity for potential surge in cases
- Limited number of imported cases, limited number of clusters with known source and limited chains of transmission

**Phase 2:  
Recover**

**CRITERIA FOR TRANSITION**

- Communities are able to comply with public health guidelines and Orders
- Ongoing engagement with community leaders
- Published guidelines are implemented and adhered to
- Following existing public health measures to ensure safety of staff and clients
- Continued capacity to contact trace
- Maintain testing turn around time
- Downward trend in epidemiology of COVID in Canada with focus on Northwest Territories, British Columbia, Alaska and Alberta
- Monitor data from border screening from point of entry
- Sufficient self-isolation facility capacity
- Adequate personal protective equipment supply, ventilators, intensive care unit capacity, staffing
- Continued low to none cases hospitalized
- Downward trend in COVID-like respiratory illness compared to normal seasonal trends
- Addressing backlog of suspended services while still maintaining capacity for potential surge in cases
- Limited number of imported cases, limited number of clusters with known source and limited chains of transmission

**Phase 3:  
New normal  
(current phase)**

# Phased approach to Yukon's plan

The goal of Yukon's phased approach is to move progressively to a more accessible and open society, as much as we can afford to, while staying safe from the pandemic. We cannot eliminate the risk of COVID-19, but we can act to reduce it. We will be using a gradual approach to get Yukoners moving again with a focus on protecting our communities, our most vulnerable residents and the health and safety of all Yukoners.

For some residents this process may appear to be moving too fast, while for others it will be seen as moving too slowly. The important thing to remember is that each phase of the plan will be implemented carefully, taking measured steps that are based on the best public health information. Let's remember that restrictions in Yukon have so far been much less severe than in many other parts of Canada and the world. Yukon's reopening plan begins from our current state, which is farther down the line than many other jurisdictions that have recently announced plans.

Phase 1 of this plan began on May 15. The duration of each phase is undefined. When criteria to move from one phase to the next is met, a transition period of 2 to 4 weeks will be applied to inform Yukoners of this change and allow for preparations. Criteria that will inform decision making include monitoring the situation, engagement with First Nations governments and communities as well as the status of disease in neighbouring jurisdictions, with a particular focus on British Columbia, Alberta and Alaska. We can say with confidence that strong border control protections will continue through the early phases of this plan. Keeping borders tightly controlled is the basis for relaxing local measures, getting Yukoners moving again.



# Phase 0: Response

## Aim

Increase public health and medical system capacity, minimize importation risk and reduce movement within Yukon to contain the spread of the virus.

Empower the commercial, government and social sectors to reopen or continue operating safely, protecting the health of employees returning to work and members of the public receiving services

Emergency orders and public health measures have been implemented to protect Yukoners. Physical distancing measures limiting contact to single households are in place. Borders are closed to non essential travel and mandatory 14-day self isolation upon entry into the territory is in place.

Entry into Yukon is permitted for individuals providing acceptable evidence to an enforcement officer that they are:

- Yukon residents;
- non-resident family members of Yukon residents;
- delivering a critical or essential service;
- transiting through Yukon to a neighbouring jurisdiction (24-hour limitation); or
- exercising an Aboriginal or treaty right (for the time needed to exercise the right).

If a business was subject to inspection by Environmental Health Services in the past, they are required to complete and submit an operational plan. All other businesses are required to complete but not submit an operational plan. A COVID-19 operational plan template is available on [Yukon.ca/covid-19](https://www.yukon.ca/covid-19).

Personal care services, bars, restaurants for seated service and non-urgent dental services are ordered closed. However, businesses and services currently closed are encouraged to consult the reopening plan to receive an indication as to when they could resume operations. Due to the evolving nature of COVID-19, regular updates will be provided.

Territorial parks and campgrounds, indoor public recreation centres and libraries are also closed. In-person education and dental care are suspended. Yukon Hospital Corporation suspended non-urgent services and are re opening on a priority basis.

# Phase 1: Restart

(May 15 to June 30)

Aim

Gradually loosen public health measures while keeping public health and workplace safety the top priority

Continue empowering the commercial, government and social sectors to reopen or continue operating safely, protecting the health of employees returning to work and members of the public receiving services

Borders will remain closed to non-essential travel, with few exceptions. Restrictions on travel within the territory are eased based on public health data and surveillance and discussions with communities. Physical distancing measures continue but will allow contact between two households. Personal care services, bars and dine-in restaurants can operate with approved operational plans. Strict infection prevention and control measures are required.

Restrictions may be eased for indoor public recreation centres and libraries based on public health assessment. Strict infection prevention and control measures and an operating plan will be required. Yukon territorial campgrounds are open following public health guidance starting June 4, 2020. Hospitals will begin offering non-urgent and routine services. Measures may be eased for funerals and religious services based on public health assessment.



## Phase 2: Recover

(July 1 to July 31)

Aim

Continue to safely ease public health measures, prepare to ease some border control measures and slowly establish the new normal for Yukoners.

The focus during Phase II is to expand permitted operations while ensuring that sufficient capacity remains to respond to a potential resurgence and that vulnerable populations are protected. Yukon's borders are open to the rest of Canada, with self-isolation requirements in place for certain jurisdictions. Residents of Yukon, British Columbia, Nunavut and the Northwest Territories can enter Yukon without having to self-isolate if they have not been outside those four jurisdictions in the last 14 days. Outdoor gatherings of 50 or fewer are permitted provided there is sufficient capacity to maintain physical distancing.

## Phase 3: New normal

(Current phase: August 1-TBD)

Aim

Focus on long-term sustainability while monitoring impacts of changes to protect the health of Yukoners as we learn to live with COVID-19.

Ensuring the health and safety of the public and workers remains a top priority as Yukon transitions to a “new normal” and continues to ease restrictions. Most businesses and services are operational with public health and hygiene measures in place. Social gatherings occurring in private dwellings or public spaces remain limited to 10 people indoors and 50 people outdoors, with physical distancing. Organised, seated events occurring in a rental facility or venue are allowed with a limit of 50 people indoors and 100 people outdoors, with physical distancing.

### Public health measures for Phases 1-3

Throughout the first three reopening phases, Yukoners should be mindful of the key areas of personal responsibility (see pages 5 to 6):

1. Practise the 6 steps to staying safe
2. Look after others
3. Look after ourselves



The Government of Yukon considers that should remain in place throughout the first three reopening phases include:

- Ensuring an adequate response plan is in place in the event of a case resurgence
- Protective measures for vulnerable populations
- Enhanced cleaning and disinfection should take place in workplaces, public spaces and recreational facilities.

Ideally Yukon will move to a Phase 4 once the development of a vaccine has been achieved. However we are aware that an alternative public health approach may be required in the event a vaccine is not available.





# Public health measures for phased reopening

Public health measures		Transition	Transition	Transition	Vaccine	
		Phase 0 Response	Phase 1 Restart	Phase 2 Recover	Phase 3 New normal (Current phase)	Phase 4 Post-vaccine
Travel	Borders	Restricted entry to Yukon: closed to non-essential travel and non-residents with few exceptions  Mandatory 14-day self-isolation	Restricted entry to Yukon continued  Mandatory 14-day self-isolation continued	All residents of Canada can enter into Yukon, with some residents required to self-isolate	Continued	No restrictions
	Travel within Yukon	Avoid non-essential travel	Limit travel to communities. Travel respectfully within Yukon and to communities	Continued	Continued	No restrictions
	Transportation services, e.g. taxis, shuttles, buses, public transit, school buses.	Allowed with public health measures  Public transit capacity limited to 12 passengers	Continued	Continued	Public transit capacity increased, with recommended use of non-medical masks	No restrictions

Physical distancing and hygiene	Public health measures	Phase 0 Response	Transition	Phase 1 Restart	Transition	Phase 2 Recover	Transition	Phase 3 New normal (Current phase)	Vaccine	Phase 4 Post-vaccine
	Hand washing and hygiene	Practicing good hygiene, e.g. hand hygiene, avoid touching face, respiratory etiquette, disinfect frequently touched surfaces	Continued	Continued	Continued	Continued	Continued	Continued	No restrictions	
	Physical distancing	Close contact is allowed with only members of your household bubble  Maintain physical distance with anyone outside your bubble	"Double bubble": close contact is allowed between members of 2 households  Otherwise, maintain two metre distance outside of combined households	"Double bubble" continued.	Expansion of bubble to include 3-5 families or 10-15 people in total  Bubbles should be small and consistent	No restrictions				
	Social gatherings	Indoor: 10 or fewer  Outdoor: 10 or fewer	Indoor: 10 or fewer  Outdoor: 10 or fewer  Funerals and religious services may have relaxed restrictions subject to public health assessment	Indoor: 10 or fewer  Outdoor: 50 or fewer, with physical distancing	Continued	No restrictions				
	Organized events	Not permitted	Not permitted	Not permitted	Permitted for organized seated events in a rental facility or venue with an operational plan  Indoor: 50 or fewer  Outdoor: 100 or fewer, with physical distancing	No restrictions				

Public health measures	Transition		Transition		Transition		Vaccine
	Phase 0 Response	Phase 1 Restart	Phase 2 Recover	Phase 3 New normal (Current phase)	Phase 4 Post-vaccine		
Retail and services	Open with public health measures	Continued Every business must complete an operational plan	Continued	Continued	No restrictions		
Accommodations, e.g. hotels, wilderness lodges, B&Bs, hostels, short-term rentals	Open with enhanced hygiene including increased environmental cleaning and public health measures	Continued	Continued	Continued	No restrictions		
Personal care services, e.g: • hair salons / barber shops • tattoo parlours • nail salons • manicurist • pedicurist • sun tanning parlours • massage parlours	Closed	Personal care services can operate with an approved operational plan  Strict infection prevention and control measures are required	Continued	Continued	No restrictions		
Fitness studios, e.g. gyms, yoga studios	Open with public health measures.	Continued	Continued	Continued	No restrictions		
Bars, i.e. liquor primary	Closed	Bars can reopen at 50% capacity, starting June 19  Strict infection prevention and control measures are required	Continued	Continued	No restrictions		

Businesses and services

Public health measures	Transition		Transition		Transition		Vaccine
	Phase 0 Response	Phase 1 Restart	Phase 2 Recover	Phase 3 New normal (Current phase)	Phase 4 Post-vaccine		
Restaurants, including food trucks and carts	Take out and delivery only	<p>Restaurants with take-out and delivery only, can continue operating, but are required to submit an operational plan</p> <p>Restaurants can offer 50% capacity dine-in services subject to an approved operational plan</p> <p>Food trucks can reopen after passing an inspection by Environmental Health Services</p> <p>Strict infection prevention and control measures are required for all restaurants including food trucks and carts</p>	Dine-in restaurants can operate at full capacity if physical distancing can be maintained. An approved operational plan is required	Continued	No restrictions		
Mining, manufacturing, and other industry including work camps	Open with infection prevention measures in place, self-isolation away from camps for workers coming from out-of-territory	Continued	Continued	Travel restrictions may ease based on public health assessment and discussions with communities. An approved operational plan is required	No restrictions		
Construction	Open with public health measures	Continued	Continued	Continued	No restrictions		
Agriculture and forestry	Open with public health measures	Continued	Continued	Continued	No restrictions		
Food processing, e.g. butchers, abattoirs	Open with public health measures	Continued	Continued	Continued	No restrictions		

Businesses and services

Public health measures	Transition		Transition		Transition		Vaccine
	Phase 0 Response	Phase 1 Restart	Phase 2 Recover	Phase 3 New normal (Current phase)	Phase 4 Post-vaccine		
Outfitters	Open with public health measures	Continued	Self-isolation on outfitter concessions permitted with approved operational plans  This does not apply to citizens from other countries, who are not currently allowed to enter Canada due to restrictions put in place by the Government of Canada	Continued	No restrictions		
Funerals	Services with 10 people or fewer permitted with public health measures	Indoor services: 10 people or fewer  Outdoor services: 50 people or fewer	Continued	Indoor services: 50 people or fewer  Outdoor services: 100 people or fewer	No restrictions		
Faith-based services	Virtual where possible. Services with 10 people or fewer permitted with public health measures	No more than 50 people can attend services or 1/3 of building capacity, whichever is less	Continued	Continued	No restrictions		
Tourist attractions	Open with public health measures.	Continued  Every business must complete an operational plan	Continued	Continued	No restrictions		
Guided tourism experiences, wilderness guiding	Open with public health measures	Continued  Every business must complete an operational plan	Continued	Continued	No restrictions		
In-territory transportation (scheduled air carriers, charter air services, car rental, RV rental, van and motorcoach tours)	Open with public health measures	Continued  Every business must complete an operational plan	Continued	Continued	No restrictions		

Businesses and services

Public health measures	Transition		Transition		Transition		Vaccine	
	Phase 0 Response	Phase 1 Restart	Phase 2 Recover	Phase 3 New normal (Current phase)	Phase 4 Post-vaccine			
Non-urgent medical procedures	Non-urgent and routine services suspended	Non-urgent and routine services re-open. Health care delivery to continue virtually where possible and feasible	Continued	Continued	No restrictions			
Elective surgeries	Non-urgent hospital services temporarily suspended or postponed	Hospitals to begin offering non-urgent and scheduled surgeries, other health care services	Continued	Continued	No restrictions			
Hospital visitors	Visitation suspended with exceptions	One support person or visitor allowed for Emergency department, intensive care unit patients and maternity patients  A limit of 2-5 visitors at a time allowed for patients near the end of life	One support person or visitor allowed for all admitted patients  Maternity patients are allowed a doula or midwife in addition to their support person	To be determined based on consultation with Yukon Hospital Corporation	No restrictions			
Diagnostic testing, e.g. x-ray testing, laboratories, ultrasounds	Non-urgent services temporarily suspended or postponed	Non-urgent and scheduled testing and other health care services resume	Continued	Continued	No restrictions			
Dental care	Emergency care only	Emergency care only	Emergency, urgent and non-emergent dental care allowed	All dental services permitted following public health measures	No restrictions			
Allied health, e.g. physiotherapy, optometrists, registered massage therapists	Open with public health guidance for allied health professionals	Continued	Continued	Continued	No restrictions			

Health care

Recreation and entertainment	Public health measures	Phase 0 Response	Transition	Phase 1 Restart	Transition	Phase 2 Recover	Transition	Phase 3 New normal (Current phase)	Vaccine	Phase 4 Post-vaccine
	Entertainment venues, e.g. theatres, cinemas, casinos, bingo halls, museum, cultural centres	Risk assessment will guide opening of entertainment venues. Strict infection prevention and control measures and an operating plan will be required	Continued		Continued		Continued		Continued	
Indoor public recreation centres and libraries	Closed	Recreation centres and libraries reopen in limited capacity following guidelines		Continued easing of restrictions based on public health measures		Continued		Continued		No restrictions
Farmers' markets	Open with public health guidance	Continued		Continued		Continued		Continued		No restrictions
Outdoor recreation spaces, e.g. sports fields, golf courses, tennis courts	Permitted for activities where physical distancing can be easily maintained (e.g. low or no contact sports or activities) with public health measures	Continued		Continued		Continued		Further easing of restrictions to be determined in consultation with sports groups		No restrictions
Yukon territorial campgrounds	Public campgrounds closed, private campgrounds and RV parks open with public health guidance and subject to Travel within Yukon restrictions	Open with public health guidance starting June 4		Continued		Continued		Continued		No restrictions
Fishing and Hunting	Permitted	Continued		Continued		Continued		Continued		No restrictions

		Transition		Transition		Transition		Vaccine	
Public health measures		Phase 0 Response	Phase 1 Restart	Phase 2 Recover	Phase 3 New normal (Current phase)	Phase 4 Post-vaccine			
Group living environments	Long term care facilities	General visiting conditions suspended except for designated essential visitors at end-of-life or for essential care purposes	Continued	Residents can have 2 identified general visitors for outdoor visits (including essential visitor)	Further easing of restrictions to be determined with consultation of Continuing Care team	No restrictions			
	Other congregate living environments, e.g. group homes, shelters for homeless, correctional facilities	Restrictions on access/ protective measures in place-follow communal living guidelines	Continued	Continued	Restrictions may be eased based on public health assessment	No restrictions			
Education and childcare	Daycares, day homes and day camps	Open for children of critical and essential workers only, following public health guidance	Daycares are open to children of all workers. Summer day camps can operate following guidelines. Recreational programming allowed following guidelines.	Continued	Continued	No restrictions			
	Overnight camps	Closed	Closed	Closed	Overnight camps permitted based on risk assessment and an approved operational plan	No restrictions			
	Elementary schools	In-person classes suspended for the remainder of the 2019/20 school year	School operations adapted based on advice from the Chief Medical Officer of Health.	Continued	Continued	No restrictions			
	Secondary schools	In-person classes suspended for the remainder of the 2019/20 school year	School operations adapted based on advice from the Chief Medical Officer of Health.	Continued	Continued	No restrictions			
	Yukon University	In-person classes suspended for the remainder of the 2019/20 school year	Continued	Operations adapted based on advice from the Chief Medical Officer of Health	Continued	No restrictions			



# Testing and communicable disease control

As Yukon starts to lift restrictions we must do so in a careful, gradual and evidence-based way that makes sense for our territory. Communicable disease control will continue to be critical to support and monitor Yukon's response to COVID-19.



## Yukon's COVID-19 epidemiology

**First case:** March 22, 2020 (we enacted a number of public health measures before Yukon's first case)

Total cases: **14** Hospitalized: **0** Deaths : **0** Recovered: **11**

- All adults (18+ years)
- 10 people who were infected live in Whitehorse; one lives in a rural community in Yukon
- 3 Yukon residents contracted COVID-19 outside of the territory.

### Summary

- There is no evidence of community transmission. All cases have a known source of infection.
- Six distinct importation events occurred from domestic (within Canada and outside Yukon) and international travel destinations. Two of these importations resulted in further transmission to close contacts
- There have been no outbreaks in closed settings (for example, long term care facilities, daycares, and correctional centres).

# Testing

Testing enough people within a population is important to identify cases early and to monitor the epidemic. Two key measures of testing are the testing rate per capita and percentage of tests that are positive.

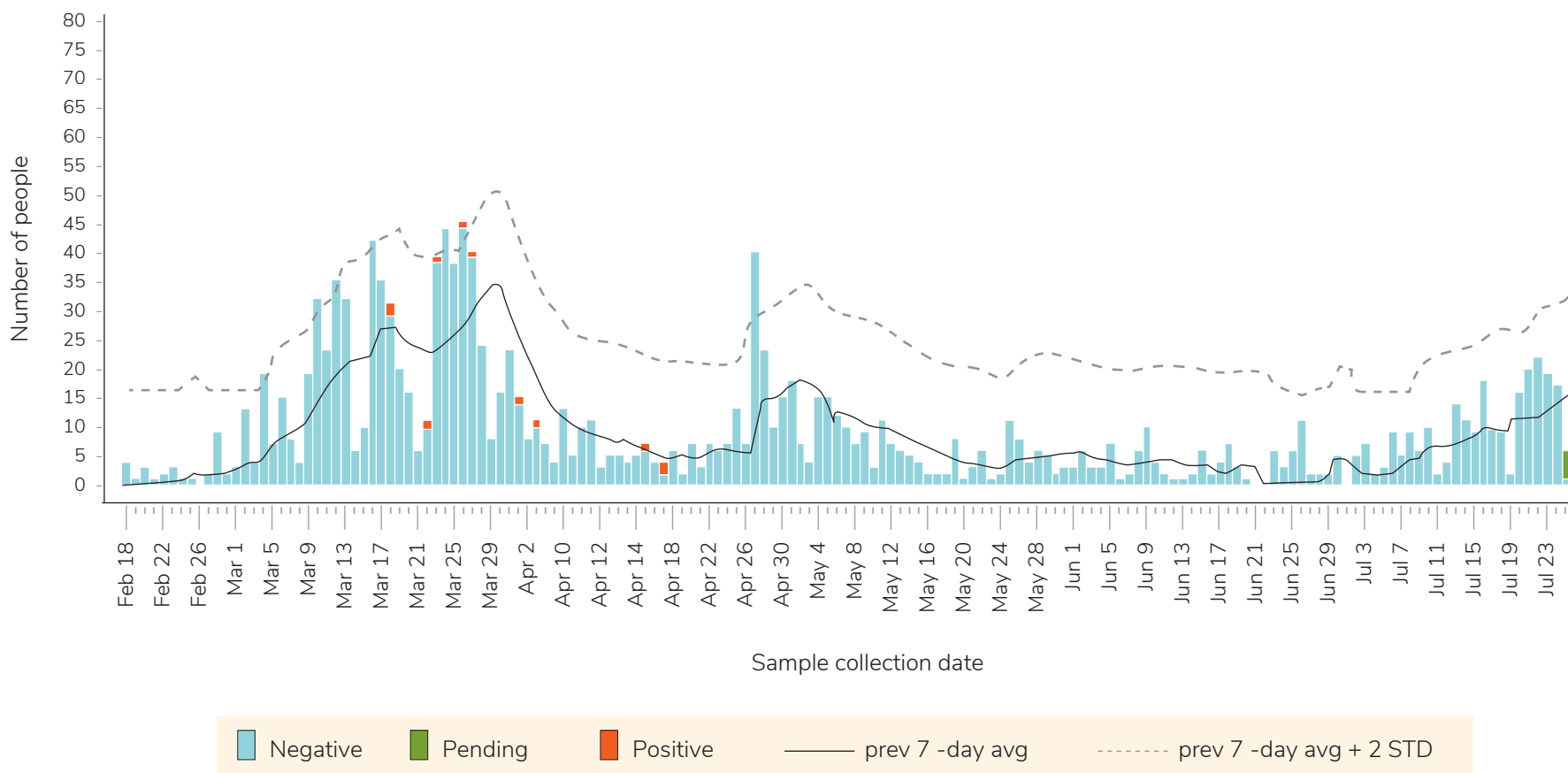
As of July 25, 2020, 34 people were tested for every 1,000 in the population. The rate of COVID-19 in those tested is among the lowest in Canada at 1%. This shows that we are testing many people and finding very little disease. This measure helps us understand how common the virus is in people who have symptoms consistent with COVID-19.

Yukon’s testing rate was higher during the spring influenza season, then began to decrease as the influenza season ended in early April 2020 (see Figure 1). This pattern is expected because COVID-19 and influenza can cause similar symptoms (cough, fever, difficulty breathing). The testing rate increased again in July and is likely due to the lifting of border restrictions and broadening of testing criteria.

	Cumulative February 18, 2020 to July 25, 2020
<b>Number of people tested</b>	1,510*
<b>Results pending</b>	5
<b>COVID-19 negative</b>	1,491
<b>COVID-19 positive</b>	14*
<b>% positivity</b>	1%
<b>% of population tested</b>	3%
<b>Testing rate per 1,000 population</b>	34.3

\* 3 Yukon residents tested outside of the territory have been added to the number of people tested and COVID-19 positive results.

**Figure 1:** Number of people tested for COVID-19 in Yukon by result status and lab sample collection date, 2020 (n=1,510)



Tests are processed at the British Columbia Centre for Disease Control (BCCDC), one of Canada's foremost public health laboratories. Testing turnaround (the time between collection and test results) has remained around 2-3 days since April because of our partnership with Air North to maintain a frequent flight schedule. Our approach to testing supports robust and timely case management and contact tracing.

Yukon's testing guidance has always supported broad testing for all segments of the population. We recently expanded testing to include a broader range of symptoms and testing criteria for people who have not travelled or had known exposure to anyone with disease. Testing continues to be provided to people with severe respiratory disease whether they have travelled or not.

We have introduced enhanced testing in long-term care facilities that follows specific criteria. The intent is to protect this vulnerable population due to their unique set of symptoms and vulnerability to severe disease.

Surveillance testing has been rolled out at the Whitehorse Emergency Shelter to ensure that we continue to avoid disease in this population, and that any disease that should occur is rapidly detected.

Yukon's approach to a testing strategy is continually being revised and updated as new information becomes available.

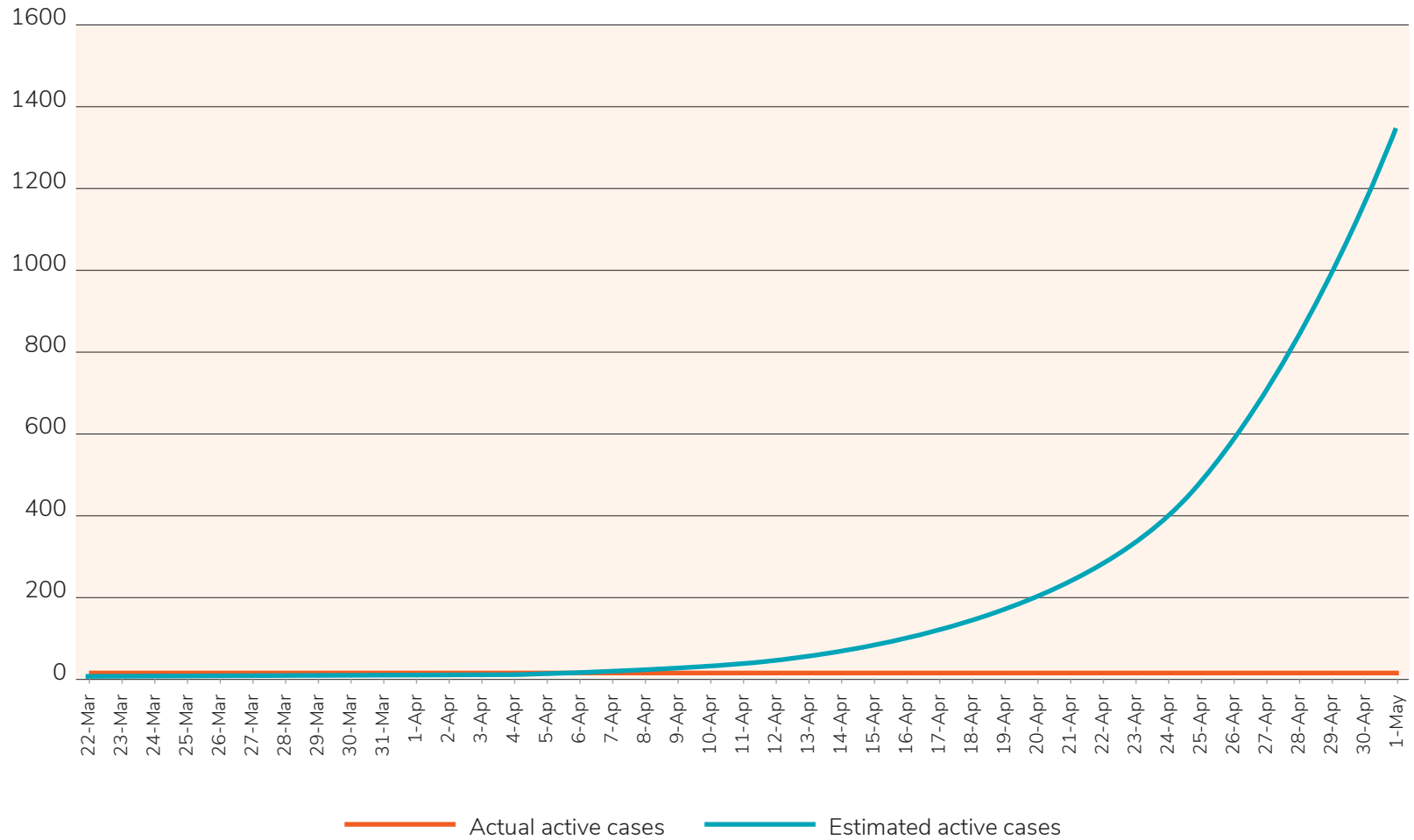
## Communicable disease control

Communicable disease control in Yukon includes surveillance, testing to detect COVID-19 as early as possible and the self-isolation of people, such as travellers, who may have been exposed to COVID-19. We also take measures to help individuals who have COVID-19 contain the potential spread of the disease, as well as prevent infection and put control measures in place in clinical care settings.

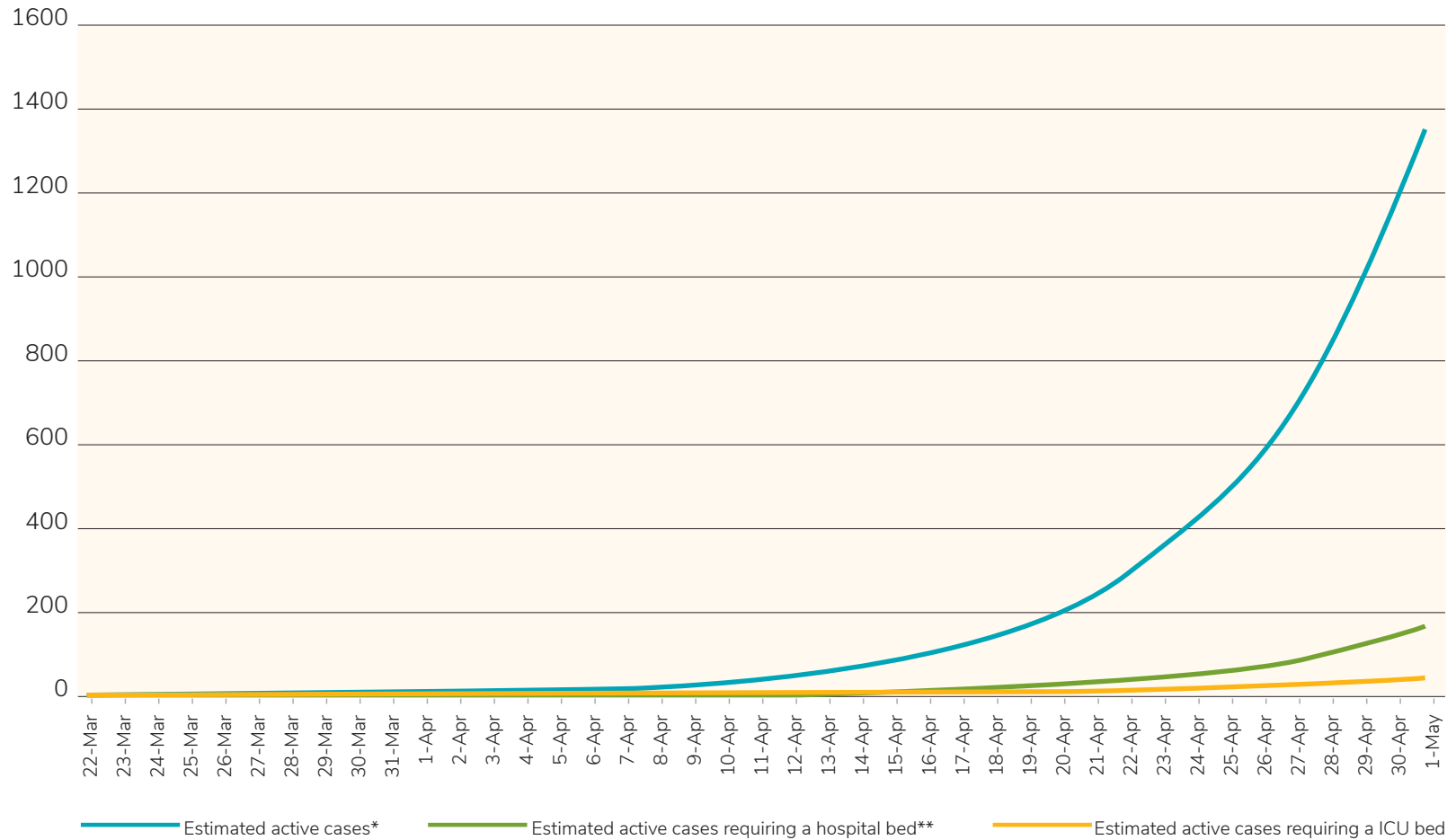
We know that the importation of COVID-19 cases has been and will continue to be part of Yukon's reality. This is why we have self-isolation requirements in place for residents of certain jurisdictions. If these individuals have acquired COVID-19 during their travels, self-isolation provides a safe way to prevent them from spreading the disease to others.

As demonstrated in Figure 2, the initial arrival of COVID-19 in Yukon could have resulted in over 1,300 active cases by May 1, 2020 in the absence of public health measures. Estimated total cases could have been around 2,500 without controls managing the spread of COVID-19. A proportion of those cases would be severe enough to require hospitalization and intensive care resources. Figure 3 shows the number of cases that could have stressed the the health care system and limited it's ability to manage both COVID-19 and non-COVID patients. Public health measures limit the potential for community spread, which in turn prevents the exponential increase in cases seen in these scenarios.

**Figure 2:** Estimated COVID-19 cases in the absence of public health measures vs. actual COVID-19 cases (March 22 to May 1, 2020)



**Figure 3:** Estimated COVID-19 cases requiring hospitalization in the absence of public health measures (March 22 to May 1, 2020)



\* Estimated active cases include all mild (no hospitalization), severe (requiring hospital bed) and critical (requiring ICU) cases.

\*\* Estimated active cases requiring a hospital bed, only includes severe cases. It does not include critical cases requiring

# Orders and directions for health protection, border control and civil society during a pandemic

In a state of emergency and a public health emergency, based on the recommendations of the Chief Medical Officer of Health, the Minister of Community Services can make Orders as required. The Chief Medical Officer of Health can also issue directions, which are different from Orders. The key differences are:

## Orders

Rules and requirements that are the law, and therefore legally enforceable. If someone violates an order, they may be charged. Charges under the Civil Emergency Measures Act (CEMA) may include fines up to \$500, up to 6 months in prison, or both. Charges under the Public Health and Safety Act (PHSA) may include fines of up to \$5,000/day.

## Directions

Guidance, best practices and strong advice to limit the spread of the virus. Directions issued should be followed to protect the health and safety of all Yukoners, especially the most vulnerable. Directions are not legally enforceable.

For a complete list of all Ministerial Orders signed to date, visit: <https://yukon.ca/en/health-and-wellness/covid-19/legislation-changes-covid-19>

For more details about specific orders and directions, visit: <https://yukon.ca/en/health-and-wellness/covid-19/orders-and-directions-covid-19>

# Border restrictions, enforcement and transitting through Yukon

Importation of COVID-19 to the territory from outside continues to be Yukon's number one risk, which is why strong border protections and community safety go hand-in-hand. To help keep Yukoners protected, on March 27 we declared of a state of emergency under the Civil Emergency Measures Act. Since that day, numerous orders have been signed under this act to bring into law measures to help limit the potential of COVID-19 from coming into the territory.

On April 2 it became law that anyone entering Yukon is required to self-isolate for 14 days and that non-residents transitting through to Alaska are required to do so within 24 hours using a predetermined route that limits opportunities for contact with Yukon communities.

On April 17, we enacted the Border Control Measures Order to further strengthen security at key points of entry. With this order in place, enforcement officers are stationed at Yukon's two entry points from the south along the Alaska Highway.

All travellers entering Yukon by land or air are required to produce appropriate identification and documentation and, if required, they must sign a declaration of their plan to self-isolate.

Presently, entry into Yukon is permitted for all Canadians. As of July 1, 2020, residents of BC, NWT and Nunavut who have not traveled elsewhere in the past 14 days can enter Yukon without self-isolating first. All other Canadians from other jurisdictions will be required to self-isolate for 14 days upon entry. Those delivering critical services are exempt from self-isolation requirements.

While our goal is to control who may enter Yukon in the interest of protecting Yukoners' health and safety, we also recognize that Yukon's shared border with Alaska means there will continue to be individuals transitting through the territory to get to points in Alaska. These individuals must confirm they have no symptoms of COVID-19, declare where they intend to go, and exit Yukon for Alaska within 24 hours.

Individuals that have entered Yukon that are critical or essential service workers, residents from outside the Yukon mobility bubble who've completed their mandatory 14-day self-isolation, Yukon residents who have not yet changed their licence plates over and Alaskan residents receiving essential services in Yukon can now receive a decal to show their vehicle is allowed in Yukon.

For more details about borders and travel, visit:  
<https://yukon.ca/en/borders-and-travel-covid-19>



## Yukon schools Kindergarten to Grade 12



“Based on the advice and health and safety Guidance for K-12 School Settings from Yukon’s Chief Medical Officer of Health, the Government of Yukon is planning for Yukon Kindergarten to Grade 12 students to return to classes in public schools for the start of the 2020–21 school year. Throughout the pandemic, we will keep as many students in classes in schools as is safely possible, with the health and safety of students and staff remaining the first priority.

The preliminary plan for the 2020-21 school year includes:

- In rural communities, Kindergarten to Grade 12 students will return to full-day, in-class instruction five days per week.
- In Whitehorse, Kindergarten to Grade 9 students in Whitehorse will return to full-day, in-class instruction five days per week.
- In Whitehorse high schools, Grades 10-12 students will return to half-day in-class instruction and half-day learning away from school five days per week, until health and safety guidelines allow for larger groups of older students.
- Resource programs for students with disabilities, transitions programs and other programs for students needing additional support will continue at school all day, every day.

Specific school operational plans will include the health and safety measures for each school, and will be shared with school communities in August before the start of the 2020-21 school

year, so students and families know what to expect. If necessary, these plans may be adapted over the course of the pandemic based on further advice and health and safety Guidance for K-12 School Settings from the Chief Medical Officer of Health.

As part of Yukon’s modernized curriculum, teachers and students will continue to use technology as part of learning to develop digital literacy and skills they will need for their lives and careers. For the 2020–21 school year, educators will continue to build these skills with students through blended learning, which combines face-to-face and digital teaching and learning. Blended learning is flexible and can be adapted if necessary over the course of the pandemic.

More information about student learning in the coming school year is available at <https://yukon.ca/en/health-and-wellness/covid-19-information/education-and-school-supports-covid-19/planning-2020-21>

School bus services for the 2020–21 school year are being adapted based on the recommendations of the Chief Medical Officer of Health, including fewer students riding the bus to support safe spacing. The Chief Medical Officer of Health and the Department of Education encourage families to transport students between home and school this year if possible by arranging for students to walk, cycle, drive or carpool.

Students will be prioritized for busing in the 2020–21 school year if they are eligible for school busing as described in the Education Act and Student Transportation Regulations.”

# Protecting Yukon's vulnerable populations



We recognize the current impact of this pandemic on everyone in the territory, and in particular those residents in need of additional support including those experiencing underlying health conditions, substance use and/or mental health challenges, precarious housing or homelessness, gender-based violence and individuals with a disability.

Supports are in place to help vulnerable populations stay healthy and safe during the COVID-19 pandemic by accessing testing, self-isolation facilities, health services and other resources.

Governments and non-governmental organizations also provide resources to support mental health and wellness. It is recognized that as our COVID-19 response evolves so will the mental health supports and resources required for Yukoners in greater need.

The Government of Yukon is committed to ensuring that people have access to mental health and social supports quickly, conveniently and reliably. We recognize that COVID-19 puts some Yukoners at increased risk of getting an infection and developing severe complications due to their health, social and economic circumstances and we have a plan in place to address these challenges.

# Protections and support for Yukon First Nations and Yukon rural communities

Yukon First Nations governments and municipalities have taken a leadership role in supporting their citizens and communities during the initial response to COVID-19. For example, First Nations have: issued payments to citizens struggling with the costs associated with the pandemic; organized supports to those who are in self-isolation; organized venues to serve as isolation facilities in rural communities; put in place additional measures to support the communities most vulnerable, including elders; encouraged compliance with the recommendations and orders of the Chief Medical Officer of Health; and widely shared information about COVID-19.

Municipalities have taken similar measures as Yukon First Nations governments in terms of providing local supports including emergency planning and local preparedness, providing financial support measures for citizens where possible (e.g. temporarily reducing or eliminating some fees), supporting the delay of property tax payments, and providing continuity of local government and municipal services. Local inter-agency committees have been formed and are hard at work in many communities. These supports will continue to be greatly valued during the gradual and phased transition to a new normal.

Throughout the pandemic, the Yukon government's Aboriginal Relations team has been engaging with Yukon First Nations governments and have heard their concerns that the spread of COVID-19 to a rural Yukon community could quickly overwhelm the available resources. Some Self-Governing Yukon First Nations

have chosen to put in place additional health and safety measures on Settlement Land, or have asked their members to voluntarily comply with additional measures. The Yukon government will continue throughout all reopening phases to engage closely with First Nations and share new information as it becomes available, so that Yukon First Nations governments have access to the necessary scientific evidence and expertise, upon which they can base their own decisions about how their governments will transition through the phases of recovery.

The Government of Yukon's Community Affairs team has also engaged with communities throughout the pandemic and provided supports for municipalities, local advisory councils, and unincorporated Yukon to navigate through local challenges to COVID-19. The Yukon government will continue to work closely with Yukon First Nations governments and municipalities to ensure that the systems are in place to support Yukon's rural communities as we progress through the phases of this plan. Furthermore, when guidance is developed to assist sectors of the economy or when public facilities and businesses are permitted to reopen, the unique needs of Yukon's rural communities will be taken into consideration, and where appropriate, specific measures will be considered.

For more information, see our Health Response Plan for Yukon Communities at:

<https://yukon.ca/en/health-and-wellness/covid-19-information/latest-updates-covid-19/health-response-plan-yukon>

# Role of the public service in responding to COVID-19

Government of Yukon public servants have been involved in all aspects of the pandemic response, whether on the front lines, or adjusting to working from home while balancing family responsibilities, or remaining in the workplace to ensure the uninterrupted delivery of services to Yukoners. This has been a challenging time for all, but the professionalism and dedication of our public servants has been exceptional as we strive to adjust and adapt to the ever-evolving situation.

In some cases, areas within the public service have innovated and devised new ways of delivering services during the pandemic. Both through new technologies and new processes, these efficiencies and learnings will be maintained and built upon as we transition through the various re-opening phases and towards our new normal.

One of these innovations has been a sudden shift to many employees working from home. While it is too soon to tell what the future may hold, we will continue to be flexible, learn from this experience, and keep an open mind as to what the future government workplace may look like when the COVID-19 pandemic has passed. We are exploring the development of new approaches and policies to working from home that may endure well beyond COVID-19.

In the near term, and in-line with the phases of this plan, the Government of Yukon will begin a gradual, phased approach to returning Yukon government public service employees to the workplace, where it makes sense. Public health and safety, including the well-being of employees, is our top priority. Guidelines for Phase 1 of gradually returning Government of Yukon employees to the workplace can be found at <https://yukon.ca/en/collective-agreements-hr-policies>.

Additional guidelines were developed on June 24, 2020, which will guide the public service through Phases 2 and 3 of a gradual return to the workplace. Directive 5 – Working Arrangements During COVID-19 can be found at <https://yukon.ca/en/working-arrangements-during-covid-19>. This Directive builds on previous successes and outlines important steps that will help to safely and gradually bring employees back to the office or their designated workplace as part of a 'new normal' in the weeks and months ahead.



# Overview of supports for Yukoners

As of May 12, 2020, the Government of Yukon has announced an estimated \$26.7 million in economic supports for Yukoners.

These programs and funding are both proactive and reactive measures to support Yukoners, businesses, and our arts and culture programming. We will continue to find ways to support Yukoners, through developing our own initiatives but also leveraging federal aid to maximize relief for Yukon's affected industries.

One example is aviation. It is essential that we maintain flight services to the territory. They connect our communities, deliver supplies and ensure we can access medical service in other jurisdictions. Another example is support for fixed costs for businesses. Some of our small businesses were forced to close their doors, while a great many more felt the need to close out of an abundance of caution. Those that stayed open saw their revenues decline. By helping cover businesses' fixed costs, we are trying to help prevent owners from having to close their doors for good. In the coming weeks, the Government of Yukon will release its Economic Recovery Plan as we look toward the future together.

The plan will map out a framework and actions in support of Yukon's key sectors as we continue to work with our partners on the Yukon Business Advisory Council and the Yukon Tourism Advisory Board. Our partners in the business community have been vital during this difficult time in providing us with the information we need to make informed choices as a government and be able to react swiftly in response to this pandemic. As we move into recovery, we will release more measures to revitalize Yukon's economy. Our private and community partnerships will inform these decisions. We are going to be reaching out to our partners in the coming days and focused on the following priorities:

- balance health advice with the need for economic recovery
- consider the unique needs of various industries and sectors
- ensure community needs are balanced with economic growth
- align our work with federal programs and initiatives to maximize benefits to Yukoners
- engage directly with the business community and other stakeholders
- connecting existing initiatives into the planning process, such as the Yukon Tourism Development Strategy

As we connect with Yukoners across the territory for feedback and ideas, there are going to be a lot of ideas in both the short-term and the long-term. It's important to note that not all supports for businesses and the economy come with a price tag. Through our work with the Business Advisory Council and the Yukon Tourism Advisory Board, we hear input that helps to shape an innovative response to this unprecedented situation. Small actions like ensuring government invoices are paid quickly or that people can swiftly sign up for direct deposit can have a huge impact on cash flow for Yukoners and their businesses.

Each day, we develop, create and establish more relief measures for the public that help hard-working Yukoners keep local businesses afloat. There are supports that will emerge beyond the initial stages of the pandemic, as well as ones that will target re-opening, re-invigorating and recovery in our economic future.

On the next page is an overview of some of the supports provided to date. The dollar figures for each item are only estimates of program funding and do not reflect the actual amounts spent. They can vary based on applications, federal funding and changes to conditions during the pandemic.



Initiative	Description	Details
Economic and fiscal response initiatives		
Rent assist program	Tenants and landlords who are affected by income losses during the COVID-19 pandemic will benefit from rent assistance. Program extended to September 2020. Estimated value: \$1.29M	May 11, 2020 <a href="#">News release</a> July 10, 2020 <a href="#">News release</a>
COVID-19 call centre	Established an external call centre to handle COVID related inquiries. Estimated value: \$236k	May 8, 2020 <a href="#">News release</a>
Air North and Alkan Air financial support	Direct support to Air North and Alkan Air using Federal Funds to ensure a minimum of 5 weekly flights to Vancouver and 3 weekly scheduled flights to Old Crow and Dawson City to transport essential supplies, equipment, essential staff and testing samples. Estimated value: \$2.3M	May 4, 2020 <a href="#">News release</a> July 28, 2020 <a href="#">News release</a>
Aviation fees	Waiving all airport landing, aircraft parking and loading fees. Suspension of a variety of fees and charges to commercial aviation operations at government owned airports and aerodrome. Estimated value: \$847k	May 4, 2020 <a href="#">News release</a> March 26, 2020 <a href="#">News release</a>
Relief from mining assessment	Provide relief from assessment work and/or making payment in lieu of work with respect to Quartz Mining Act and Placer Mining Act. Estimated value: \$500k	Announced via email April 24
Delay liquor price increases	Delaying liquor price changes for wholesale customers. Estimated value: \$224k	YLC contacted licensees
CERB exempt from social assistance	Yukoners receiving social assistance benefits will not experience a reduction if they receive the Canada Emergency Response Benefit. Estimated value: \$810k	April 27, 2020 <a href="#">News release</a>
Yukon business relief program	Yukon businesses impacted by the COVID-19 pandemic will receive support to cover fixed business costs, including rent, utilities and business insurance. Program extended. Estimated value: \$10M	April 9, 2020 <a href="#">News release</a> May 20, 2020 <a href="#">News release</a>

Initiative	Description	Details
Economic and fiscal response initiatives (cont)		
Sick-leave provisions	Rebate for workers and self-employed to receive paid sick leave if they are sick and required to self-isolate for 14 days. Estimated value: \$6.2M	March 26, 2020 <a href="#">News release</a>
Event reimbursement program	Temporary support to cover up to 100% of unique, irretrievable financial losses due to the cancellation of events due to COVID-19. Estimated value: \$3.6M	April 1, 2020 <a href="#">News release</a>
Tourism Marketing Cooperative Fund	One-time increase to the Tourism Cooperative Marketing Fund and one-time removal of the 50% contribution by the business. Expanded scope of eligible projects. Estimated value: \$1.0M	March 27, 2020 <a href="#">News release</a>
WCB deferrals	Deferring some workers compensation health and safety premium payments, reimburse some premiums paid up-front, waive penalties and interest. Estimated value: \$800k	March 16, 2020 <a href="#">News release</a>
Arts Fund	Fund increased by \$125,000 for the April intake and changed to allow applications for 100% of the eligible costs. Estimated value: \$125k	May 27, 2020 <a href="#">News release</a>
Phones to vulnerable women	Provided 325 cell phones to vulnerable women over 4 months. Estimated value: \$94k	April 3, 2020 <a href="#">News release</a>
Advanced Artist Award	April 1 intake will have \$150,000 available in funding, \$75,000 more than usual. Supports artists to use the COVID-19 period to enhance artistic professional development. Estimated value: \$75k	March 27, 2020 <a href="#">News release</a>
Health care insurance plan coverage	Extending the health care insurance plan coverage to Yukoners unable to return home.	March 25, 2020
Funding for childcare operators	Funding for childcare centre and day home operators to cover wages and fixed costs to support them remaining open.	April 6, 2020 <a href="#">News release</a>
Discounts on retail price of liquor for licensees	Restaurants and other businesses with a liquor licence receiving a discount of 25 per cent off the retail price for liquor. Estimated value: \$400k	June 4, 2020 <a href="#">News release</a>
Yukon mineral exploration program stimulus	Increase in funding for the existing Yukon mineral exploration program. Estimated value: \$1.1 M	June 11, 2020 <a href="#">News release</a>



Initiative	Description	Details
Disability services emergency relief	Increase in the amount available to support individuals and families supporting individuals with disabilities. Estimated value: \$251k	June 2, 2020 <a href="#">News release</a>
K-12 educational support to families	Providing financial support to families to help alleviate expenses related to learning at home. Estimated value: \$1.6M	May 19, 2020 <a href="#">News release</a>
Staffing Up to hire students	Provides funding to help Yukon employers create new summer employment for graduating and postsecondary students in critical and essential services. Estimated value: \$750k	May 22, 2020 <a href="#">News release</a>
Economic response - social and other supports		
Business Advisory Council	Established a Business Advisory Council to provide advice on government's response to COVID-19 from the business community.	March 25, 2020 <a href="#">News release</a>
Property tax deferral	Deferral of property taxes until September 2, 2020.	April 23, 2020 <a href="#">News release</a>
Eviction protection	Regulation changes under Residential Landlord and Tenants Act to prevent COVID-related evictions. Program extended.	March 26, 2020 <a href="#">News release</a> June 12, 2020 <a href="#">News release</a>
Immediate invoice payment	Adjusted government procedures to process and pay invoices immediately to ensure local contractors and businesses have payment at a time of limited cash flow.	Internal process, no public comms
On Yukon Time program	On Yukon Time funding (\$75,000) will be focused on initiatives that can be presented without in-person gathering.	March 27, 2020 <a href="#">News release</a>
Honouring Transfer Payment Agreements	Support the Yukon arts, culture, sport and recreation, and other non-governmental work by honouring most transfer payment agreements or making allowances for events/activities that have been delayed or canceled due to COVID-19.	Depts. contact recipients directly.
Yukon Tourism Advisory Board	Provides advice to the Minister on strategic tourism issues and works to implement the Yukon Tourism Development Strategy. Mandate is broad but will focus on COVID-19 impacts as needed.	March 19, 2020 <a href="#">News release</a>

Initiative	Description	Details
Economic response - social and other supports (cont)		
Yukon nominee program	Yukon nominees who experience layoffs or reduced work hours will not be issued the standard 90-day notice to find new employment. This change will remain in effect for the duration of the public health emergency.	<a href="#">Webpage</a>
Waived liquor re-stocking fee	Waived the re-stocking fee when licensees returned un-used liquor.	Yukon Liquor Corporation direct contact with licensees
50% refund on liquor licence fee	Liquor and food primary licensees received a 50 per cent refund of this year's licence fee because of the closure requirements for restaurants and bars	June 4, 2020 <a href="#">News release</a>
Expedited licence approvals	Expedited approvals for licence modifications to support licensees managing physical distancing requirements.	Yukon Liquor Corporation direct contact with licensees
Deferred payments for YHC clients	Streamlined access to existing processes for deferral of loan repayments and rent reductions.	Direct contact with clients <a href="#">Webpage</a>
General and Health Related Response		
Drivers licensing requirements	Deferral of requirement for affected drivers to provide a medical examination certificate during the state of emergency.	April 28, 2020 <a href="#">News release</a>
Ventilators	Six ventilators have been received on loan from the Public Health Agency of Canada's emergency response services.	April 27, 2020 <a href="#">News release</a>
Pivot Cold Climate Innovation funding	Shift program scope of the Cold Climate Innovation funding provided to Yukon College to COVID pivoting or opportunities	April 14, 2020
Suspension of face to face classes	Face to face classes suspended for the rest of the 2019-20 school year.	April 7, 2020 <a href="#">News release</a>
Parks and campgrounds opened	Territorial parks and campgrounds opened and sale of camping permits began June 4.	May 29, 2020 <a href="#">News release</a>

Initiative	Description	Details
General and Health Related Response - Non-Financial		
Waste services	Delay of tipping fee introduction at some landfills. Re-opening of recycling centers.	March 30, 2020 <a href="#">News release</a> June 11, 2020 <a href="#">News release</a>
Special hunting guide license lottery	Application deadline for special hunting guide license lottery delayed until June.	March 27, 2020 <a href="#">News release</a>
Virtual care	Virtual access to physicians to provide ongoing health care while encouraging physical distancing.	March 23, 2020 <a href="#">News release</a>
Respiratory Assessment Centre	Respiratory Assessment Centre set up to provide support and assessment to people with acute respiratory illness. New location as of July 6.	March 19, 2020 <a href="#">News release</a> July 8, 2020 <a href="#">News release</a>
Online self-assessment	Online screening tool for COVID-19.	March 18, 2020 <a href="#">News release</a>
Health and safety guidelines for schools and buses	School operations and bus services are being adapted to ensure health and safety of K to 12 students and school staff for the 2020/21 school year.	July 23, 2020 <a href="#">News release</a> July 9, 2020 <a href="#">News release</a> June 9, 2020 <a href="#">News release</a>
Expanded testing criteria	Testing for COVID-19 now includes a broader range of symptoms for people who have not travelled.	July 15, 2020 <a href="#">News release</a>
Visitor decals for out-of-territory licence plates	Identifying vehicles that have met requirements to stay in the territory.	July 22, 2020 <a href="#">News release</a>

Initiative	Description	Details
General and Health Related Response - Non-Financial (cont)		
Health measures at Government of Yukon buildings	As many employees gradually return to the workplace, health measures have been adopted to ensure the ongoing health and safety of YG employees.	July 15, 2020 <a href="#">News release</a>
Re-opening Whitehorse Public Library with increased health and safety measures	The Whitehorse Public Library reopened to the public on July 21, 2020 with health measures in place to ensure the safety of the public and staff.	July 15, 2020 <a href="#">News release</a>
Visitor Information centres open	VICs have reopened in Whitehorse, Carcross, Dawson City, Beaver Creek and Watson Lake, so that visitors have the most up-to-date information available.	July 8, 2020 <a href="#">News release</a>
Mask requirement at Yukon airports	An increase in airport traffic means additional protective measures for passengers and staff.	June 30, 2020 <a href="#">News release</a>
Resume road tests with increased health measures	Driver testing has resumed with increased health measures for drivers and staff.	June 25, 2020 <a href="#">News release</a>
Online guidance for vulnerable populations	To help Yukoners at risk during this pandemic, vulnerable populations can now access mental health and social supports online.	June 24, 2020 <a href="#">News release</a>
Re-opening of pools, restaurants, bars, non-food vendors at farmers' markets, personal services, and other businesses	With approved operational plans in place, Yukon businesses are able to re-open.	June 24, 2020 <a href="#">News release</a> June 12, 2020 <a href="#">News release</a>
Extended nomination period for literacy award	The nomination period for the 2020 Council of the Federation Literacy Award was extended to end of June.	June 23, 2020 <a href="#">News release</a>
Increased cleaning in YHC buildings	Increased cleaning protocols in all YHC buildings, amended operations procedures to maintain social distancing and insure health and safety of staff and clients. Checked in by phone contact with all tenants and clients, contracted senior engagement specialist.	Direct contact with clients <a href="#">Webpage</a>
Guidelines for visitors at long-term care facilities	Permitting the re-introduction of visitors.	June 12, 2020 <a href="#">News release</a>
Accessing opioid treatment services	Opioid Treatment Services and support are available to anyone who feels a need to discuss or address their opioid use, especially considering the increased stressors many are under due to COVID-19	June 5, 2020 <a href="#">News release</a>

# The path forward

Yukoners can be very proud of our efforts to beat back COVID-19. We made sacrifices and came together like never before to keep each other safe and stop the spread of this deadly virus in Yukon.

Now, we are turning our minds to how to safely return back to work, to be with friends and family, to enjoy our campgrounds, outdoor spaces, and unique freedoms inherent to our beautiful territory. This plan carefully guides us forward.

Our strong border protections will continue allowing us to relax measures here at home, with communicable disease control to detect and prevent spread from new cases of COVID-19 when they arrive. We will continue to balance our actions with evolving conditions across Canada and internationally.

Inside Yukon, our plan focusses on easing restrictions based on monitoring the epidemiology of COVID-19 and careful evaluation as each new measure comes into force. This should allow businesses to reopen, along with needed services like dental clinics, daycares and eventually our schools.

The plan supports a more resilient future where innovators and entrepreneurs can adapt and build a foundation for an even more prosperous Yukon. This vision for a reinvigorated and more sustainable future is not a foreign concept for Yukoners; it is also

the foundation of the territory's recently co-developed *Our Clean Future* draft strategy for climate change, energy and a green economy. This pandemic has not diminished the need to take decisive action on addressing the impacts of climate change; rather it has reinforced the awesome power that exists within each of us to set our society on an immediate and far cleaner path. Through this pandemic, we have been forced to reconsider how we work and interact on a daily basis and we can learn from how we have adapted to these challenges.

Our battle with COVID-19 is not over. However, the risk of acquiring COVID-19 in Yukon remains low, and as long as we follow the guidance of our health professionals, we can enjoy living in one of the least restricted parts of the country. This plan builds on that foundation of optimism.

Going forward our government will continue listening to and working with Yukoners. The most informed health experts and government officials will always rely on community wisdom and engagement to chart the right course.

Stay informed, take vigilant care of your personal health and follow the six steps to staying safe.



  
Yukon