



# A Path Forward

Yukon's plan for lifting COVID-19 restrictions







## Message from the Premier

The COVID-19 pandemic changed how we live our lives, globally and here at home. In Yukon, the total number of COVID-19 cases remains low and we have not had a new case since April 20. This means the measures we have all taken to protect Yukoners and limit the spread of the virus are working. I know that these measures have been challenging and disruptive for all of us and that we are eager to get our communities back up and running. Also I know, deep in our hearts, no Yukoner wants to put a neighbour, friend or relative at risk. That is why our plan to lift restrictions will move forward in a steady and deliberate way.

Work is underway across the country to ensure a careful and coordinated approach to easing COVID-19 restrictions and reopening society and the economy. Recently all Canadian Premiers agreed on the principles that will guide the reopening process. They will ensure the process is accountable, flexible, based on science and evidence, and that the Canada-wide cooperation happening right now continues at every step along the way.

Yukon's reopening will happen in phases. We will continue to rely on a public health framework and the expertise of Yukon's Chief Medical Officer of Health. Make no mistake--we must be very cautious as we begin relaxing measures. If we move too quickly without the necessary planning and the right conditions in place, we risk undoing all of the good work that has helped keep the territory safe.

The greatest risk facing Yukon is importation of the virus. Our proposed way forward and our overall strategy plots a course to a "new normal" where restrictions are relaxed for Yukoners in the territory, but tight border controls are maintained to keep COVID-19 out. Our focus will continue to be on protecting our communities, our most vulnerable residents, and getting Yukoners moving again as quickly as possible.

Please know that the Government of Yukon is here to help you through these challenging times. We are supporting Yukon families, businesses, and workers to keep our communities strong and we will continue to do so as we move through each phase of this plan. The resilient spirit of the territory has been on full display for months now, and I am incredibly proud of our collective efforts and sacrifices made for the greater good.

A handwritten signature in black ink, appearing to be 'SS' with a large flourish.

Premier Sandy Silver





## Message from the Chief Medical Officer of Health

As we welcomed 2020, few of us could have predicted what lay ahead. Five months into the year, life has changed profoundly for us all. Still, as always, life does carry on – births, celebrations, work, ritual, recreation, and deaths – but even the way that we commemorate and acknowledge life events is so very different from what it was on January 1.

We have been on a journey together since the beginning of the year, a journey which has changed paths several times.

Followed by a series of more restrictive measures, a decision taken on March 7 set Yukon on the right path to protecting its citizens from the cruel and capricious spread of COVID-19 that has been seen elsewhere in Canada, the United States and the world.

As of today, we have no active cases; 11 people have tested positive and all were able to recover safely at home. We continue to look for cases. Our hospitals have been spared, and we are all grateful that so far, our residents in long term care facilities have not fallen prey to this pandemic. To date, only one case has emerged in our rural communities and like all the others, it was contained.

Early and strict closure of our borders with self-isolation of anyone coming into Yukon has helped us keep COVID-19 at bay. Encouraging people to stay close to home helped. Cooperation from all of Yukon citizens has made this success possible.

Success means we are now finally able to move progressively to a more accessible and open society: as much as we can afford to while staying safe from the pandemic.

I am pleased we are able to share the plans for a phased-in reopening of the territory.

Critical to this recovery is maintaining border control, keeping us in COVID containment mode but will allow us to ease restrictions within Yukon.

Our approach will be slow and measured. The reason we are moving slowly, deliberately, and gradually is because we want to ensure we have the protections in place for every Yukoner.

The way forward is clear and deliberate. We take a step and wait, and watch, and if all looks safe, we take another step. In this way, as services reopen, you can be confident that it is safe for you to attend, with the proper hygiene practices in place.

To open too quickly is to invite in the foe we have kept at bay and could signal a retreat. Just as the tortoise in the famous race, we will continue to win if we take the slow and steady pace.

My best wishes to all as we move slowly, safely, and steadily ahead.

A handwritten signature in black ink, appearing to read 'B. Hanley', with a long, sweeping underline.

Brendan E. Hanley MD CCFP(EM) MPH  
Chief Medical Officer of Health, Yukon

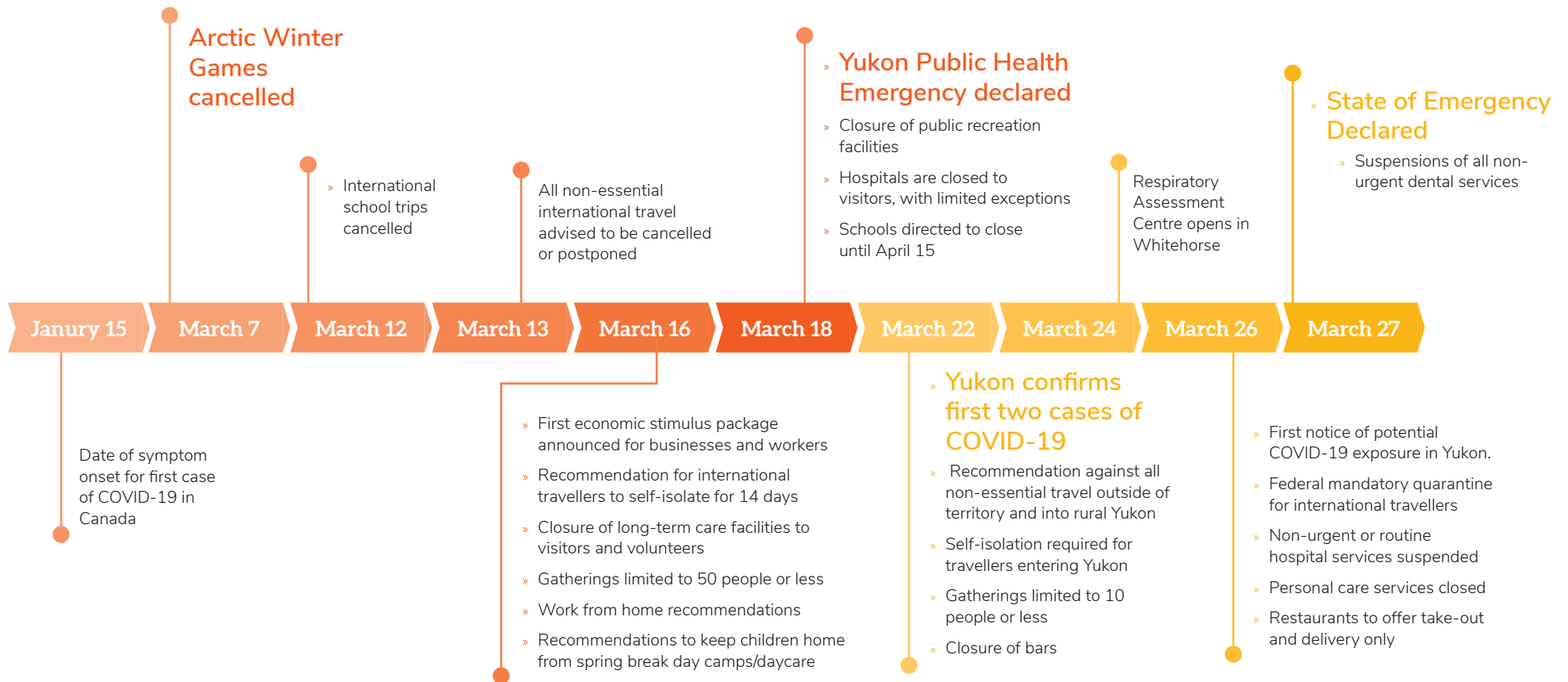


# Table of Contents

---

- Message from the Premier ..... iii
- Message from the Chief Medical Officer of Health ..... v
- COVID-19 timeline: public health measures, border security and major milestones ..... 1
- Purpose and principles of the plan ..... 3
- Personal responsibility for implementing the plan: your role in saving lives ..... 5
- A message from the Yukon Workers’ Compensation Health and Safety Board ..... 8
- Community engagement ..... 9
- Criteria for transitioning between phases ..... 11
- Phased approach to Yukon’s plan ..... 13
  - Phase 0: Response ..... 13
  - Phase 1: Restart ..... 15
  - Phase 2: Recover ..... 15
  - Phase 3: New normal ..... 15
- Public health measures for phased reopening ..... 18
- Testing and communicable disease control ..... 26
- Orders and directions for health protection, border control and civil society during a pandemic ..... 32
- Border restrictions, enforcement and transitting through Yukon ..... 33
- Yukon schools Kindergarten to Grade 12 ..... 34
- Protecting Yukon’s vulnerable populations ..... 35
- Protections and support for Yukon First Nations and Yukon rural communities ..... 36
- Role of the public service in responding to COVID-19 ..... 37
- Overview of economic supports for Yukoners ..... 38
- The path forward ..... 44

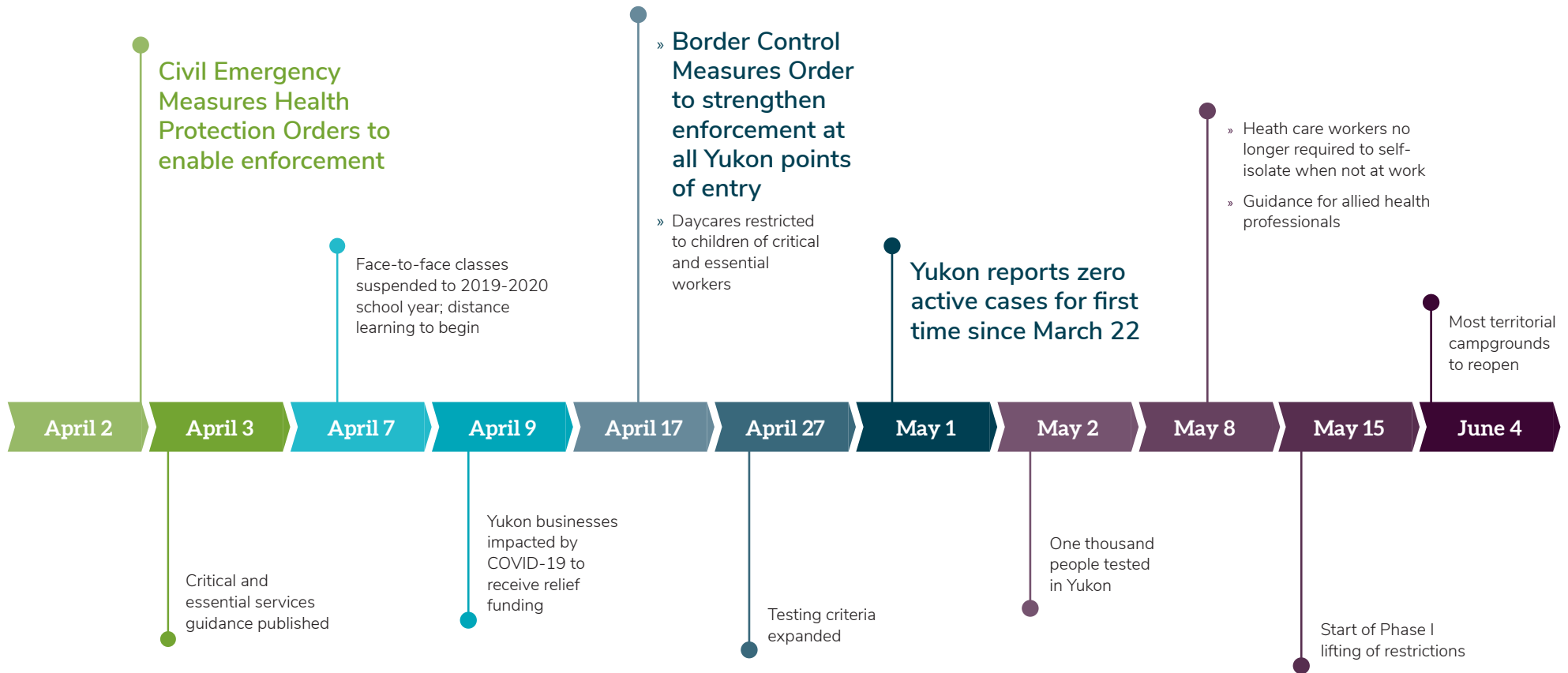
# COVID-19 timeline: public health measures, border security and major milestones





The Government of Yukon acted decisively to implement precautionary measures early on to prevent the spread of COVID-19, beginning with the cancellation of the 2020 Arctic Winter Games. Further preventative measures and Yukoners' commitment to following the six steps to staying safe has led

to Yukon's success in reducing the spread of COVID-19 in the territory. If we had not put restrictions in place when we did, by May 1, 2020 Yukon could have experienced upwards of 2,500 cases of COVID-19 according to modelling developed by the Health Emergency Operations Centre.



# Purpose and principles of the plan

The social and economic hardships of this pandemic are undeniable, and we recognize the strain that this has placed on our mental health, personal wellbeing, our families, our communities, our businesses and our way of life in Yukon.

By working together to implement public health measures and strengthen our health system capacity, we have succeeded in slowing down the number of new cases while protecting the most vulnerable Yukoners and communities. Since declaring both a Public Health Emergency and a State of Emergency in March of 2020, the sacrifices and discipline exercised by the Yukon public since that time has helped save lives. This point cannot be emphasized enough: our collective efforts are saving lives.

As the course of the epidemic evolves, the Government of Yukon, in consultation with the Chief Medical Officer of Health, is preparing a gradual approach to lifting public health measures, while keeping individuals and communities safe and healthy.

*A Path Forward* outlines the principles, public health criteria and indicators that will inform government decisions on readiness for the gradual lifting or re-introduction of public health measures. Because this pandemic is rapidly evolving and because so many of the actions Yukon takes will be informed by COVID-19 conditions in other provinces, territories and neighbouring jurisdictions, this Yukon Plan is a living document. Our aim is to continue preventing the introduction and spread of COVID-19 while balancing and addressing the many unintended social, economic and health consequences of existing restrictions.

| <b>Principles of the plan</b>           |   |
|---|---|
| <b>Accountability and transparency</b>  | The Government of Yukon will continue to be accountable, share data and monitor the impacts of public health measures through careful assessments. Protecting Yukoners by minimizing health risks and reducing social disruption will continue to be paramount and guide a gradual approach to loosening measures across each phase of the plan.  |
| <b>Evidence-based</b>                   | Emerging scientific literature, public health monitoring data, and criteria developed by other Canadian jurisdictions will inform decisions to ease or reinstate measures based on risk assessments.  |
| <b>Adaptability and proportionality</b> | Public health measures will be implemented, adapted, and relaxed based on the level of threat in a controlled and phased manner. This includes information on health system capacity, public health capacity, importation risk, and safety and economic needs that may change over time. Public health capacity for adequate testing, contact tracing, and case management will need to be maintained.  |
| <b>Sufficient health resources</b>      | Sufficient health system capacity to manage and treat cases will be required to protect front line workers and the public. Resources for acute care and testing, and supports for Yukoners required to self-isolate, are especially important in responding to any resurgence in COVID-19 infections.   |
| <b>Engagement and collaboration</b>     | Continued collaboration and frequent communication across all sectors and with community leaders, Yukon First Nations governments and the public will be key to ongoing success. Health and safety guidelines and plans for individuals, businesses and our health care system will be developed with input from partners. Yukoners will be encouraged to understand their essential role in helping to control the transmission of COVID-19 and will be provided with clear explanations underlying changing public health guidelines. |



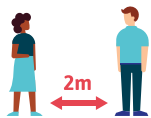
## Personal responsibility for implementing the plan: your role in saving lives

Every single person in Yukon has a part to play in stopping the spread of COVID-19. We are reliant on one another to keep the pandemic at bay, save lives and slowly reopen our society and economy by following the steps outlined in this plan. We must each understand that it is our own personal actions that will in large part determine whether we can move from our current state through the phases of this plan.

There are three factors to keep in mind that will help us carry out this responsibility.

# 1. Practise the 6 steps to staying safe

We must each practise the 6 steps to staying safe and encourage others to follow them too. We will need to follow these steps until we're in Phase IV of this plan, as outlined later on. The 6 steps are:



**1** Keep 2 metres (6 feet) away from everyone who's not a member of your household



**4** Don't gather in groups of 10 or more and always keep 2 metres (6 feet) apart



**2** Wash your hands frequently with soap and water or use sanitizer with at least 60% alcohol



**5** Limit travel to rural communities



**3** Stay home if you're feeling sick



**6** Self-isolate if you've returned to Yukon or have been in contact with someone with COVID-19



## 2. Look after others

COVID-19 affects everybody differently but what unites us is that we are in this fight together. This is a stressful time for everyone. It is important to remember that some of us were already vulnerable and struggling economically or with mental health challenges before the pandemic arrived. We are now all seeing our resiliency tested like never before. We must look after each other as a community, including those who come to the territory from outside to help us by providing critical and essential services or support to family members. This is something Yukoners are already good at and we can rely on our strong community spirit to help keep everyone afloat so we all arrive safely on the other side of the pandemic together.

## 3. Look after ourselves

Looking after our mental and physical health is part of how we should each respond to the pandemic. This includes those of us who have never accessed mental health services before. Experiencing fear, worry or stress is normal in any crisis. With all the change that COVID-19 has brought to our lives, the feeling that we are no longer in control and grieving for what we have lost is completely normal. Reaching out for mental health support is a sign of strength and courage, and will help us individually as well as those around us. There are plenty of mental health services available to support Yukoners, which can be found at [Yukon.ca/mental-wellness-support-during-covid-19](https://www.yukon.ca/mental-wellness-support-during-covid-19).

## A message from the Yukon Workers' Compensation Health and Safety Board

Like essential services during the pandemic, all employers must demonstrate they can operate safely. In fact, all employers are required under the Occupational Health and Safety Act to ensure the safety of their employees at work.

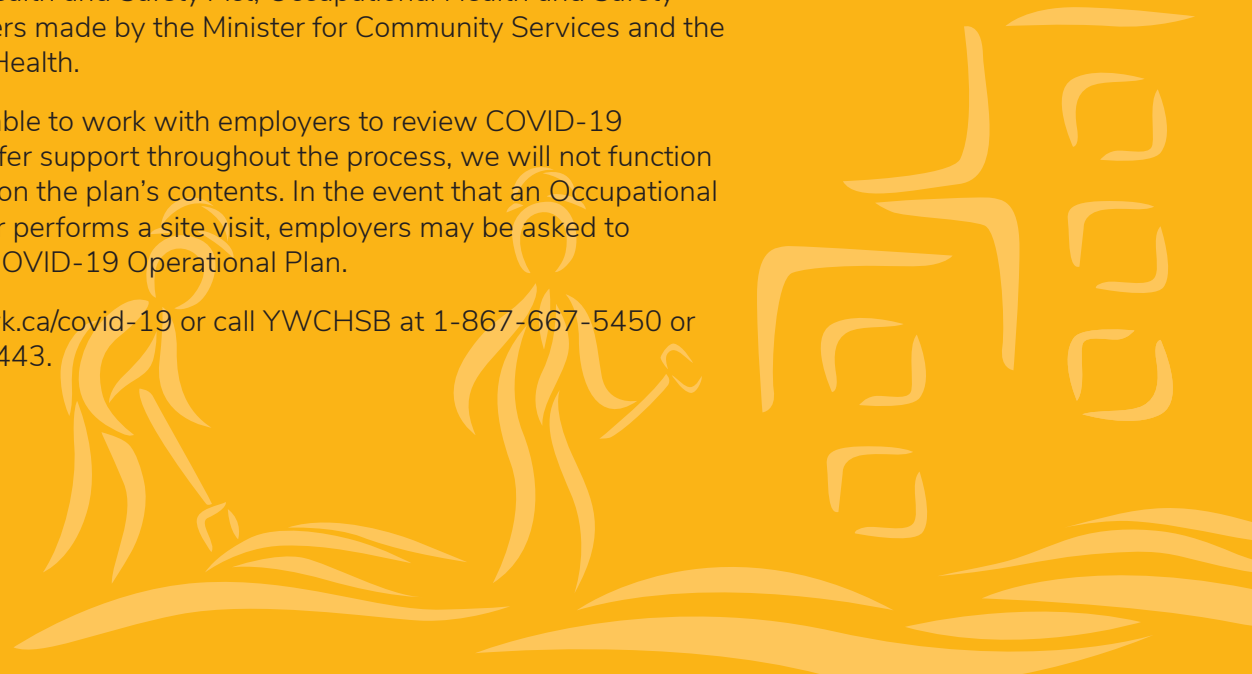
As local businesses, non-profits and organizations plan for their opening, Yukon Workers' Compensation Health and Safety Board (YWCHSB) is here to help.

YWCHSB will work with industry associations to identify appropriate information resources and ensure the direction and guidance they provide to their members meets the requirements set out by the Chief Medical Officer of Health. YWCHSB will work with employers and workers through information resources, consultation and workplace inspections to help them operate safely.

The Government of Yukon is requiring employers to develop a COVID-19 Operational Plan. The plan will help employers perform a hazard assessment to mitigate the risks of spreading COVID-19 in the workplace to ensure compliance with the Occupational Health and Safety Act, Occupational Health and Safety Regulations and the orders made by the Minister for Community Services and the Chief Medical Officer of Health.

While YWCHSB is available to work with employers to review COVID-19 Operational Plans and offer support throughout the process, we will not function as an approval authority on the plan's contents. In the event that an Occupational Health and Safety Officer performs a site visit, employers may be asked to produce a copy of their COVID-19 Operational Plan.

For resources, visit [wcb.yk.ca/covid-19](http://wcb.yk.ca/covid-19) or call YWCHSB at 1-867-667-5450 or toll free at 1-800-661-0443.



# Community engagement

Public and community engagement has become a bedrock of government decision-making and that commitment will be sustained throughout the duration of this pandemic and beyond. We recognize that the perspectives, experiences and advice of the public and community leadership can help shape the best direction forward for the territory. We will continue to be clear about the goals of engagement, and how input will be considered in our decision-making.

One of the necessary criteria for moving between each phase of this plan is engagement with community leadership.

Leaders from the Government of Yukon's Health Emergency Operations Centre, Aboriginal Relations and Community Affairs teams will continue to work closely with Yukon First Nations governments, community and local government leaders as we begin implementing and further refining this plan. We recognize

that local businesses, service providers and residents will have many questions and will be seeking guidance at each step along the way; we are committed to supporting community leaders so that everyone is well equipped to respond to these pressures at the local level.

The fast pace of this emergency has demanded a very agile and accelerated approach to decision making and interventions to save lives. As we move toward relaxing health measures and a gradual lifting of restrictions, we are committed to involving and informing Yukon First Nations governments and all Yukon communities in the way forward. The goal is to ensure a high level of comfort, understanding and support for all public health strategies and decisions.







# Criteria for transitioning between phases

Decisions about when and how to move forwards or backwards through each of the phases of this plan will be guided by careful, in-depth risk assessments and the six criteria outlined below.

Continuous monitoring and evaluation of Yukon's current COVID-19 situation and response is the key to determining when it is safe to enter a new phase, and which measures to implement within each phase. It is important to note that the road to recovery and reinvigorating society and the economy may not be a one-way street; movement through and between each phase will be informed by criteria that will help us maintain appropriate protective measures at each step along the way. This also includes the circumstances under which some public health measures may need to be reinstated.



**Phase I Restart  
(Current Phase)**

**CRITERIA FOR TRANSITION**

- Communities are able to comply with public health guidelines and Orders
- Ongoing engagement with community leaders
- Published guidelines are implemented and adhered to
- Following existing public health measures to ensure safety of staff and clients
- Continued capacity to contact trace
- Maintain testing turn around time
- Downward trend in epidemiology of COVID in Canada with focus on Northwest Territories, British Columbia, Alaska and Alberta
- Monitor data from border screening from point of entry
- Sufficient space to self-isolate is available
- Adequate personal protective equipment supply, ventilators, intensive care unit capacity, staffing
- Continued low to none cases hospitalized
- Downward trend in COVID-like respiratory illness compared to normal seasonal trends
- Addressing backlog of suspended services while still maintaining capacity for potential surge in cases
- Limited number of imported cases, limited number of clusters with known source and limited chains of transmission

**Phase 2  
Recover**

**CRITERIA FOR TRANSITION**

- Communities are able to comply with public health guidelines and Orders
- Ongoing engagement with community leaders
- Published guidelines are implemented and adhered to
- Following existing public health measures to ensure safety of staff and clients
- Continued capacity to contact trace
- Maintain testing turn around time
- Downward trend in epidemiology of COVID in Canada with focus on Northwest Territories, British Columbia, Alaska and Alberta
- Monitor data from border screening from point of entry
- Sufficient self-isolation facility capacity
- Adequate personal protective equipment supply, ventilators, intensive care unit capacity, staffing
- Continued low to none cases hospitalized
- Downward trend in COVID-like respiratory illness compared to normal seasonal trends
- Addressing backlog of suspended services while still maintaining capacity for potential surge in cases
- Limited number of imported cases, limited number of clusters with known source and limited chains of transmission

**Phase 3  
New normal**

# Phased approach to Yukon's plan

The goal of Yukon's phased approach is to move progressively to a more accessible and open society, as much as we can afford to, while staying safe from the pandemic. We cannot eliminate the risk of COVID-19, but we can act to reduce it. We will be using a gradual approach to get Yukoners moving again with a focus on protecting our communities, our most vulnerable residents and the health and safety of all Yukoners.

For some residents this process may appear to be moving too fast, while for others it will be seen as moving too slowly. The important thing to remember is that each phase of the plan will be implemented carefully, taking measured steps that are based on the best public health information. Let's remember that restrictions in Yukon have so far been much less severe than in many other parts of Canada and the world. Yukon's reopening plan begins from our current state, which is farther down the line than many other jurisdictions that have recently announced plans.

Phase 1 of this plan begins on May 15. The duration of each phase is undefined. When criteria to move from one phase to the next is met, a transition period of 2 to 4 weeks will be applied to inform Yukoners of this change and allow for preparations. Criteria that will inform decision making include monitoring the situation, engagement with First Nations governments and communities as well as the status of disease in neighbouring jurisdictions, with a particular focus on British Columbia, Alberta and Alaska. We can say with confidence that strong border control protections will continue through the early phases of this plan. Keeping borders tightly controlled is the basis for relaxing local measures, getting Yukoners moving again.



# Phase 0: Response

## Aim

Slow transmission, minimize importation risk, and increase public health and medical system capacities

Empower the commercial, government and social sectors to reopen or continue operating safely, protecting the health of employees returning to work and members of the public receiving services

Emergency orders and public health measures have been implemented to protect Yukoners. Physical distancing measures limiting contact to single households are in place. Borders are closed to non essential travel and mandatory 14-day self isolation upon entry into the territory is in place.

Entry into Yukon is permitted for individuals providing acceptable evidence to an enforcement officer that they are:

- Yukon residents;
- non-resident family members of Yukon residents;
- delivering a critical or essential service;
- transiting through Yukon to a neighbouring jurisdiction (24-hour limitation); or
- exercising an Aboriginal or treaty right (for the time needed to exercise the right).

If a business was subject to inspection by Environmental Health Services in the past, they are required to complete and submit an operational plan. All other businesses are required to complete but not submit an operational plan. A COVID-19 operational plan template is available on [Yukon.ca/covid-19](https://www.yukon.ca/covid-19).

Personal care services, bars, restaurants for seated service and non-urgent dental services are ordered closed. However, businesses and services currently closed are encouraged to consult the reopening plan to receive an indication as to when they could resume operations. Due to the evolving nature of COVID-19, regular updates will be provided.

Territorial parks and campgrounds, indoor public recreation centres and libraries are also closed. In-person education and dental care are suspended. Yukon Hospital Corporation suspended non-urgent services and are re opening on a priority basis.

# Phase I: Restart

(Current phase – May 15)

## Aim

Gradually loosen public health measures while keeping public health and workplace safety the top priority

Continue empowering the commercial, government and social sectors to reopen or continue operating safely, protecting the health of employees returning to work and members of the public receiving services

Borders will remain closed to non-essential travel, with few exceptions. Restrictions on travel within the territory are eased based on public health data and surveillance and discussions with communities. Physical distancing measures continue but will allow contact between two households. Personal care services, bars and dine-in restaurants cannot operate until the Chief Medical Officer of Health lifts the Orders, guidelines are published and operational plans are approved. Strict infection prevention and control measures are required.

Restrictions may be eased for indoor public recreation centres and libraries based on public health assessment. Strict infection prevention and control measures and an operating plan will be required. Yukon territorial campgrounds are open following public health guidance starting June 4 2020. Hospitals will begin offering non-urgent and routine services. Measures may be eased for funerals and religious services based on public health assessment.



## Phase II: Recover

(to begin when criteria are met)

Aim

Continue opening personal care, health care, and recreation services. Monitor migration, number of travel cases and case contacts in preparation for easing border control measures in Phase 3 and slowly establishing the new normal for Yukoners.

The focus during Phase II is to expand permitted operations while ensuring that sufficient capacity remains to respond to a potential resurgence and that vulnerable populations are protected. Borders remain closed to non essential travel, with some exceptions. Outdoor gatherings of 50 or less may be permitted provided there is sufficient capacity to maintain physical distancing. Overnight summer camps for children may be permitted, based on public health assessment.

## Phase III: New normal

(to begin when criteria are met)

Aim

Focus on long-term sustainability while monitoring impacts of changes to protect the health of Yukoners as we learn to live with COVID-19.

Ensuring the health and safety of the public and workers will continue to be a top priority as Yukon transitions to a “new normal” and continues to open businesses and services. Most businesses and services will be fully operational with more relaxed public health and hygiene measures in place. Border control measures will be gradually lifted. The effects of these changes on importation risk will be continually monitored. Physical distancing measures may be eased based on public health data. No size restriction with gatherings, provided that there is sufficient capacity to maintain physical distancing.

### Public health measures for Phases I-III

Throughout the first three reopening phases, Yukoners should be mindful of the key areas of personal responsibility (see pages 5 to 6):

1. Practise the 6 steps to staying safe
2. Look after others
3. Look after ourselves



The Government of Yukon considers that should remain in place throughout the first three reopening phases include:

- Ensuring an adequate response plan is in place in the event of a case resurgence
- Protective measures for vulnerable populations
- Enhanced cleaning and disinfection should take place in workplaces, public spaces and recreational facilities.

Ideally Yukon will move to a Phase IV once the development of a vaccine has been achieved. However we are aware that an alternative public health approach may be required in the event a vaccine is not available.





# Public health measures for phased reopening

| Public health measures |  | Phase 0: Response   | Transition | Phase I <i>Restart</i><br>Current phase  | Transition | Phase II <i>Recover</i>  | Transition | Phase III <i>New normal</i>  | Vaccine | Phase IV <i>Post-vaccine</i> |
|------------------------|--|---|------------|--|------------|--|------------|--|---------|------------------------------|
| Travel                 | Borders  | Closed to non-essential travel and non-residents with <b>few</b> exceptions. Mandatory 14-day self-isolation. |            | Continued  |            | Closed to non-essential travel and non-residents with <b>some</b> exceptions. Mandatory 14-day self-isolation. |            | Gradually lift border controls.  |         | Open                         |
|                        | Travel within Yukon  | Avoid non-essential travel.   |            | Travel directions eased based on public health data and surveillance and discussions with communities. |            | Travel directions eased based on public health data and surveillance and discussions with communities.         |            | Travel directions eased based on public health data and surveillance and discussions with communities. |         | Open                         |
|                        | Transportation services, e.g. taxis, shuttles, buses, public transit, school buses | Allowed with public health measures.  |            | Continued  |            | Continued  |            | Continued  |         | Open                         |

|                                 | Public health measures              | Phase 0: Response  | Transition | Phase I <i>Restart</i><br>Current phase  | Transition | Phase II <i>Recover</i>   | Transition | Phase III <i>New normal</i>  | Vaccine | Phase IV <i>Post-vaccine</i> |
|---------------------------------|-------------------------------------|--|------------|--|------------|---|------------|--|---------|------------------------------|
| Physical distancing and hygiene | Hand washing and hygiene            | Practicing good hygiene, e.g. hand hygiene, avoid touching face, respiratory etiquette, disinfect frequently touched surfaces. |            | Continued  |            | Continued   |            | Continued  |         | Continued                    |
|                                 | Physical distancing                 | Members of one "household unit" may be in close contact.<br><br>Maintain two metre distance outside of household unit.         |            | Combined household units <ul style="list-style-type: none"> <li>• Maximum 10 people total</li> <li>• Up to two households in a household bubble</li> </ul> See guidance document for details.<br><br>Otherwise, maintain two metre distance outside of combined household units. |            | Continued   |            | Physical distancing directions may be eased based on public health data                          |         | Open                         |
|                                 | Gatherings with physical distancing | 10 or less<br><br>Elders and seniors and those with underlying medical conditions may choose not to attend gatherings.         |            | Continued  |            | 50 or less for outdoor gatherings and 10 or less for indoor gatherings, provided that there is sufficient capacity to maintain physical distancing. |            | No size restriction, provided that there is sufficient capacity to maintain physical distancing. |         | Open                         |

| Public health measures   | Transition  |   | Transition  |  | Transition   |  | Vaccine |  |
|--|---|---|---|--|--|--|---------|--|
|  | Phase 0: Response   | Phase I <i>Restart</i><br>Current phase   | Phase II <i>Recover</i>   | Phase III <i>New normal</i>                                  | Phase IV <i>Post-vaccine</i>                                 |  |         |  |
| Retail and services  | Open with public health measures.   | Continued<br>Every business must complete an operational plan.  | Continued   | Continued  | Open   |  |         |  |
| Accommodations, e.g. hotels, wilderness lodges, B&Bs, hostels, short-term rentals  | Open with enhanced hygiene including increased environmental cleaning and public health measures. | Continued   | Continued   | Continued  | Open   |  |         |  |
| Personal care services, e.g:<br>• hair salons / barber shops<br>• tattoo parlours<br>• nail salons<br>• manicurist<br>• pedicurist<br>• sun tanning parlours<br>• massage parlours | Closed  | Personal care services cannot operate until the CMOH lifts the Order, guidelines are published and an operational plan is approved.<br><br>Strict infection prevention and control measures are required. | Continued   | Continued  | No restrictions  |  |         |  |
| Fitness studios, e.g. gyms, yoga studios   | Open with public health measures.   | Continued   | Public health measures may be eased based on public health data | Continued  | Open   |  |         |  |
| Bars, i.e. liquor primary  | Closed  | Bars cannot operate until the CMOH lifts the Order, guidelines are published and an operational plan is approved.<br><br>Strict infection prevention and control measures are required.                   | Restrictions may be eased based on public health assessment.    | Restrictions may be eased based on public health assessment. | Restrictions may be eased based on public health assessment. |  |         |  |

Businesses and services

| Public health measures   | Transition  |   | Transition              |  | Vaccine                      |  |
|--|---|---|-------------------------|--|------------------------------|--|
|  | Phase 0: Response   | Phase I <i>Restart</i><br>Current phase   | Phase II <i>Recover</i> | Phase III <i>New normal</i>  | Phase IV <i>Post-vaccine</i> |  |
| Restaurants, including food trucks and carts                   | Take out and delivery only.   | <p>Restaurants with take-out and delivery only, can continue operating, but are required to submit an operational plan.</p> <p>Dine-in restaurants cannot operate until the CMOH lifts the Order, guidelines are published and an operational plan is approved.</p> <p>Food trucks can reopen after passing an inspection by Environmental Health Services.</p> <p>Strict infection prevention and control measures are required for all restaurants including food trucks and carts.</p> | Continued               | Restrictions may be eased based on public health assessment.   | No restrictions              |  |
| Mining, manufacturing, and other industry including work camps | Open with infection prevention measures in place, self-isolation away from camps for workers coming from out-of-territory | Continued   | Continued               | Travel restrictions may ease based on public health assessment and discussions with communities. Requirement for approved communicable disease and outbreak management plan. | No restrictions              |  |
| Construction   | Open with public health measures  | Continued   | Continued               | Continued  | Open                         |  |
| Agriculture and forestry                                       | Open with public health measures  | Continued   | Continued               | Continued  | Open                         |  |

Businesses and services

| Public health measures  | Transition  |   | Transition  |   | Vaccine                      |  |
|---|---|---|---|---|------------------------------|--|
|   | Phase 0: Response   | Phase I <i>Restart</i><br>Current phase   | Phase II <i>Recover</i>   | Phase III <i>New normal</i>   | Phase IV <i>Post-vaccine</i> |  |
| Food processing, e.g. butchers, abattoirs   | Open with public health measures  | Continued   | Continued   | Continued   | Open                         |  |
| Outfitters  | Open with public health measures  | Continued   |   | Continued   | Open                         |  |
| Funerals  | Services with 10 people or less permitted with public health measures                         | Measures may be eased based on public health assessment   | Measures may be eased based on public health assessment   | Measures may be eased based on public health assessment   | Open                         |  |
| Religious services  | Virtual where possible. Services with 10 people or less permitted with public health measures | Measures may be eased based on public health assessment. Refer to measures for gatherings above | Measures may be eased based on public health assessment. Refer to measures for gatherings above | Measures may be eased based on public health assessment. Refer to measures for gatherings above | Open                         |  |
| Tourist attractions   | Open with public health measures.   | Continued<br>Every business must complete an operational plan                                   | Continued   | Continued   | Open                         |  |
| Guided tourism experiences, wilderness guiding  | Open with public health measures.   | Continued<br>Every business must complete an operational plan                                   | Continued   | Continued   | Open                         |  |
| In-territory transportation (scheduled air carriers, charter air services, car rental, RV rental, van and motorcoach tours) | Open with public health measures.   | Continued<br>Every business must complete an operational plan.                                  | Continued   | Continued   | Open                         |  |

Businesses and services

| Public health measures   | Transition   |   | Transition   |  | Transition                   |  | Vaccine |
|--|--|---|--|--|------------------------------|--|---------|
|  | Phase 0: Response  | Phase I <i>Restart</i><br>Current phase   | Phase II <i>Recover</i>  | Phase III <i>New normal</i>  | Phase IV <i>Post-vaccine</i> |  |         |
| Non-urgent medical procedures  | Non-urgent and routine services suspended                        | Non-urgent and routine services re-open. Health care delivery to continue virtually where possible and feasible | Continued  | Continued  | Open                         |  |         |
| Elective surgeries   | Non-urgent hospital services temporarily suspended or postponed  | Hospitals to begin offering non-urgent and scheduled surgeries, other health care services                      | Continued  | Continued  | Open                         |  |         |
| Hospital visitors  | Visitation suspended with exceptions                             | To be determined based on consultation with Yukon Hospital Corporation  | To be determined based on consultation with Yukon Hospital Corporation | To be determined based on consultation with Yukon Hospital Corporation | Open                         |  |         |
| Diagnostic testing, e.g. x-ray testing, laboratories, ultrasounds              | Non-urgent services temporarily suspended or postponed           | Non-urgent and scheduled testing and other health care services resume  | Continued  | Continued  | Open                         |  |         |
| Dental care  | Emergency care only  | Restrictions may be eased based on public health assessment   | Restrictions may be eased based on public health assessment            | Restrictions may be eased based on public health assessment            | Open                         |  |         |
| Allied health, e.g. physiotherapy, optometrists, registered massage therapists | Open with public health guidance for allied health professionals | Continued   | Continued  | Continued  | Open                         |  |         |

Health care

| Public health measures       | Phase 0: Response  | Transition  |   |  | Vaccine                                |      |
|------------------------------|--|---|---|--|--|------|
|                              |  | Phase I <i>Restart</i><br>Current phase   | Phase II <i>Recover</i>   | Phase III <i>New normal</i>            | Phase IV <i>Post-vaccine</i>           |      |
| Recreation and entertainment | Entertainment venues, e.g. theatres, cinemas, casinos, bingo halls, museum, cultural centres | Risk assessment will guide opening of entertainment venues. Strict infection prevention and control measures and an operating plan will be required.  | Continued   | Continued                              | Continued                              | Open |
|                              | Indoor public recreation centres and libraries   | Closed  | Restrictions may be eased based on public health assessment. Strict infection prevention and control measures and an operating plan will be required. | Continued                              | Continued                              | Open |
|                              | Farmers' markets   | Open with public health guidance  | Continued   | Continued                              | Continued                              | Open |
|                              | Outdoor spaces   | No restrictions provided that physical distancing can be maintained and gatherings are not larger than 10 people                                      | Refer to measures for gatherings above  | Refer to measures for gatherings above | Refer to measures for gatherings above | Open |
|                              | Outdoor recreation spaces, e.g. sports fields, golf courses, tennis courts                   | Permitted for activities where physical distancing can be easily maintained (e.g. low or no contact sports or activities) with public health measures | Continued   | Continued                              | Continued                              | Open |
|                              | Yukon territorial campgrounds  | Public campgrounds closed, private campgrounds and RV parks open with public health guidance and subject to Travel within Yukon restrictions.         | Open with public health guidance starting June 4  | Continued                              | Continued                              | Open |
|                              | Fishing and Hunting  | Permitted   | Continued   | Continued                              | Continued                              | Open |

|                           |  | Transition   |   | Transition   |  | Transition                   |  | Vaccine |  |
|---------------------------|--|--|---|--|--|------------------------------|--|---------|--|
| Public health measures    |  | Phase 0: Response  | Phase I <i>Restart</i><br>Current phase                     | Phase II <i>Recover</i>  | Phase III <i>New normal</i>  | Phase IV <i>Post-vaccine</i> |  |         |  |
| Group living environments | Long term care facilities  | Closed to visitors and volunteers, unless family members are at the end of life or gravely ill, all visitors screened. | To be determined with consultation of Continuing Care team  | To be determined with consultation of Continuing Care team                               | To be determined with consultation of Continuing Care team                               | Open                         |  |         |  |
|                           | Other congregate living environments, e.g. group homes, shelters for homeless, correctional facilities | Restrictions on access/ protective measures in place-follow communal living guidelines                                 | Continued   | Continued  | Restrictions may be eased based on public health assessment                              | Open                         |  |         |  |
| Education and childcare   | Daycares, day homes and day camps  | Open for children of essential service workers only, following public health guidance                                  | Restrictions eased with adherence to public health guidance | Restrictions eased with adherence to public health guidance                              | Restrictions eased with adherence to public health guidance                              | Open                         |  |         |  |
|                           | Overnight camps  | Closed   | Closed  | Open following public health guidance  | Continued  | Open                         |  |         |  |
|                           | Elementary schools   | Face to face classes suspended   | Continued   | To be determined with consultation with Department of Education                          | To be determined with consultation with Department of Education                          | Open                         |  |         |  |
|                           | Secondary schools  | Face to face classes suspended   | Continued   | To be determined with consultation with Department of Education                          | To be determined with consultation with Department of Education                          | Open                         |  |         |  |
|                           | Yukon University   | Face to face classes suspended   | Continued   | To be determined in consultation with Yukon University Board and Department of Education | To be determined in consultation with Yukon University Board and Department of Education | Open                         |  |         |  |



# Testing and communicable disease control

As Yukon starts to lift restrictions we must do so in a careful, gradual and evidence-based way that makes sense for our territory. Communicable disease control will continue to be critical to support and monitor Yukon's response to COVID-19.



## Yukon's COVID-19 epidemiology

**First case:** March 22, 2020 (we enacted a number of public health measures before Yukon's first case)

Total cases: **11** Hospitalized: **0** Deaths : **0** Recovered: **11**

- All adults (18+ years)
- 10 people who were infected live in Whitehorse; one lives in a rural community in Yukon

### Summary

- No new cases have been reported since April 20, 2020.
- There is no evidence of community transmission. All cases have a known source of infection.
- Six distinct importation events occurred from domestic (within Canada and outside Yukon) and international travel destinations. Two of these importations resulted in further transmission to close contacts
- Everyone who was infected has recovered and all contact tracing is complete.
- There have been no outbreaks in closed settings (for example, long term care facilities, daycares, and correctional centres).

# Testing

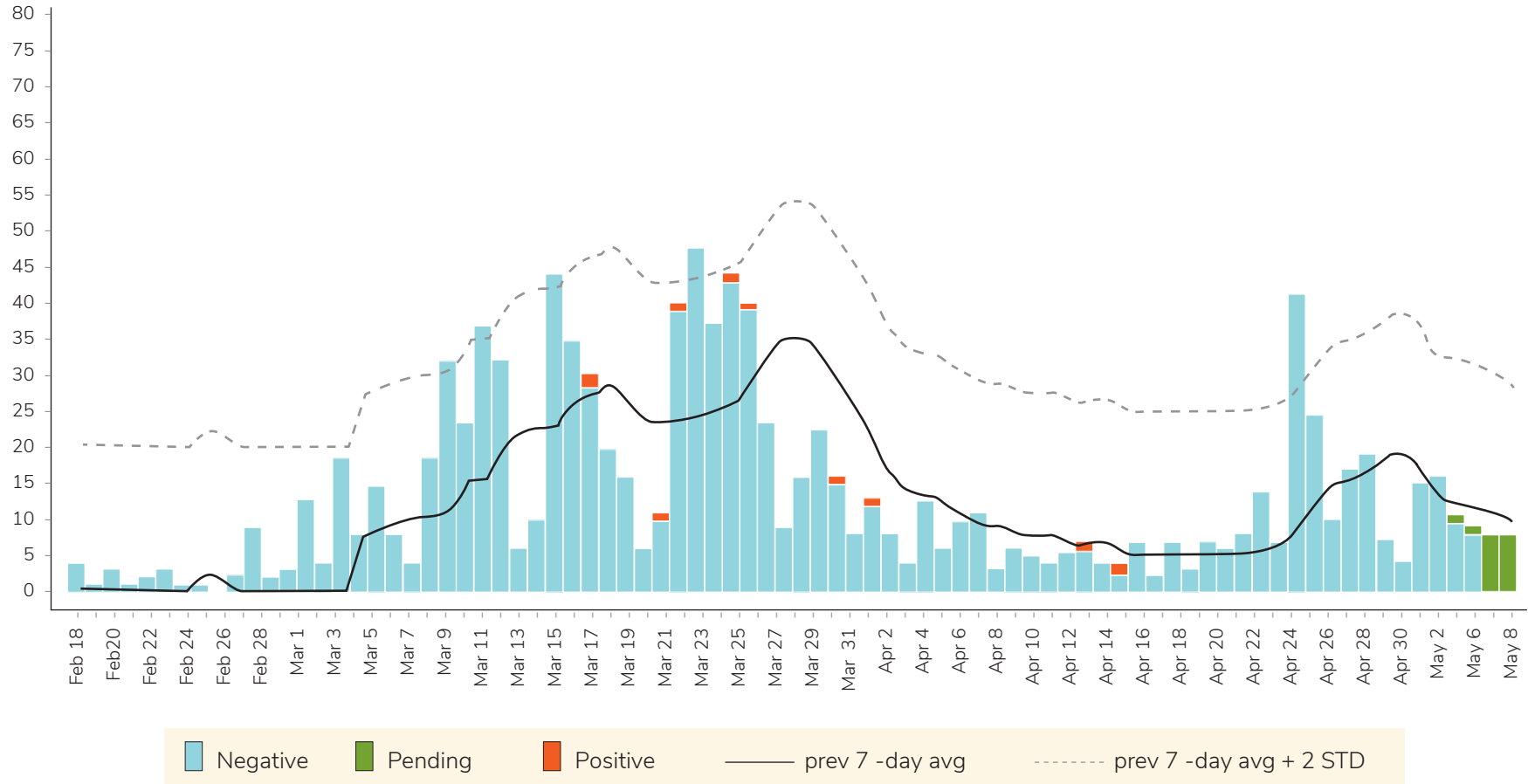
Testing enough people within a population is important to identify cases early and to monitor the epidemic. Two key measures of testing are the testing rate per capita and percentage of tests that are positive.

Yukon’s testing rate has consistently been among the highest in Canada. As of May 9 2020, 25 people were tested for every 1,000 in the population. The rate of COVID-19 in those tested is among the lowest in Canada at 1%. This shows that we are testing many people and finding very little disease. This measure helps us understand how common the virus is in people who have symptoms consistent with COVID-19.

Yukon’s testing rate was higher during the spring influenza season, then began to decrease as the influenza season ended in early April 2020 (see Figure 1). This pattern is expected because COVID-19 and influenza can cause similar symptoms (cough, fever, difficulty breathing).

|  | Cumulative<br>February 18, 2020<br>to May 9, 2020 |
|--|---|
| <b>Number of people tested</b>           | 1,088   |
| <b>Results pending</b>                   | 19  |
| <b>COVID-19 negative</b>                 | 1,058   |
| <b>COVID-19 positive</b>                 | 11  |
| <b>% positivity</b>                      | 1%  |
| <b>% of population tested</b>            | 2%  |
| <b>Testing rate per 1,000 population</b> | 25.0  |

**Figure 1:** Number of people tested for COVID-19 in Yukon by result status and lab sample collection date, 2020 (n=1,088)



Tests are processed at the British Columbia Centre for Disease Control (BCCDC), one of Canada's foremost public health laboratories. Testing turnaround (the time between collection and test results) has remained around 2-3 days since April because of our partnership with Air North to maintain a frequent flight schedule. Our approach to testing supports robust and timely case management and contact tracing.

Yukon's testing guidance has always supported broad testing for all segments of the population. We recently expanded testing to include a broader range of symptoms and testing criteria for people who have not travelled or had known exposure to anyone with disease. Testing continues to be provided to people with severe respiratory disease whether they have travelled or not.

We have introduced enhanced testing in long-term care facilities that follows specific criteria. The intent is to protect this vulnerable population due to their unique set of symptoms and vulnerability to severe disease.

Surveillance testing has been rolled out at the Whitehorse Emergency Shelter to ensure that we continue to avoid disease in this population, and that any disease that should occur is rapidly detected.

Yukon's approach to a testing strategy is continually being revised and updated as new information becomes available.

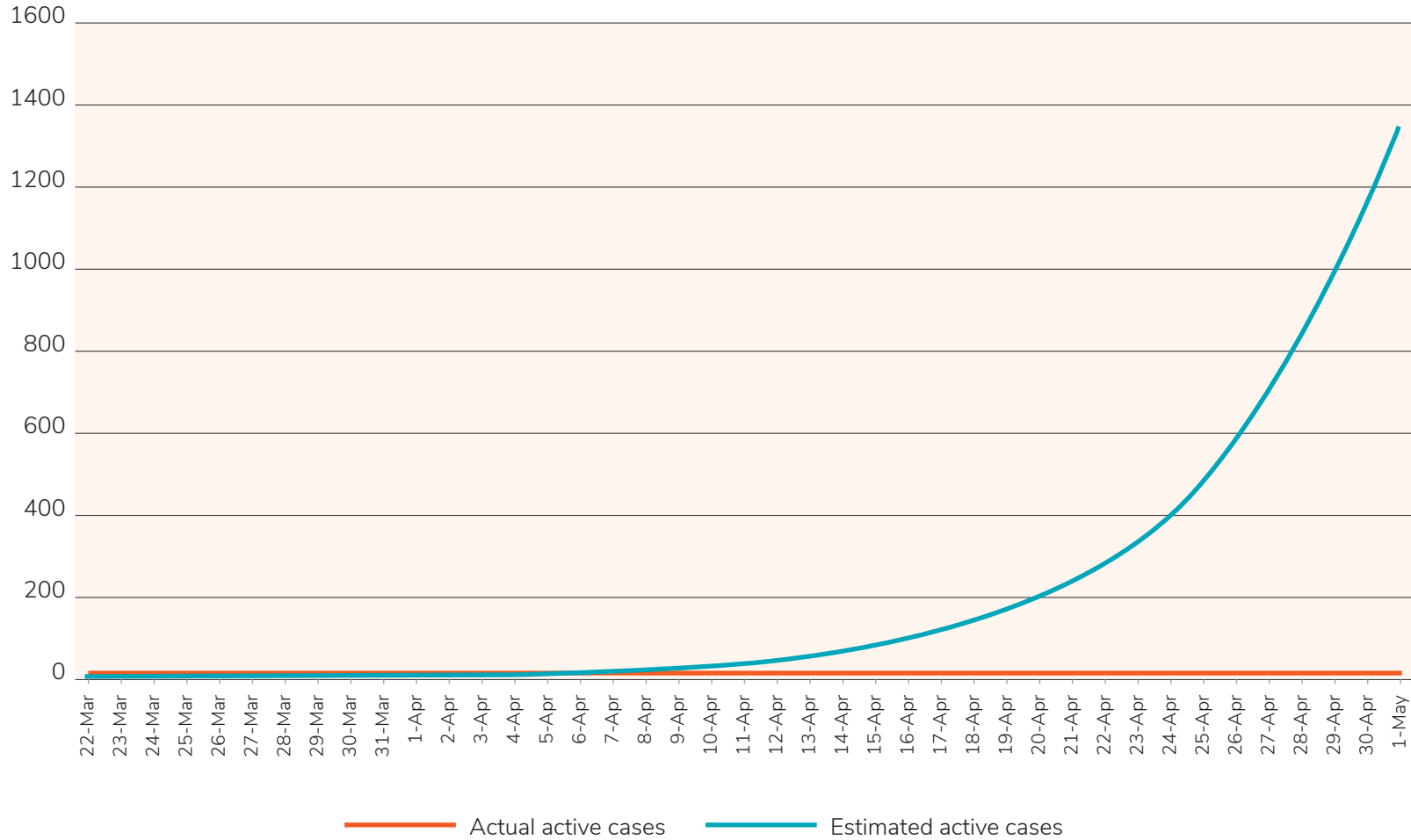
## Communicable disease control

Communicable disease control in Yukon includes surveillance, testing to detect COVID-19 as early as possible and the self-isolation of people, such as travellers, who may have been exposed to COVID-19. We also take measures to help individuals who have COVID-19 contain the potential spread of the disease, as well as prevent infection and put control measures in place in clinical care settings.

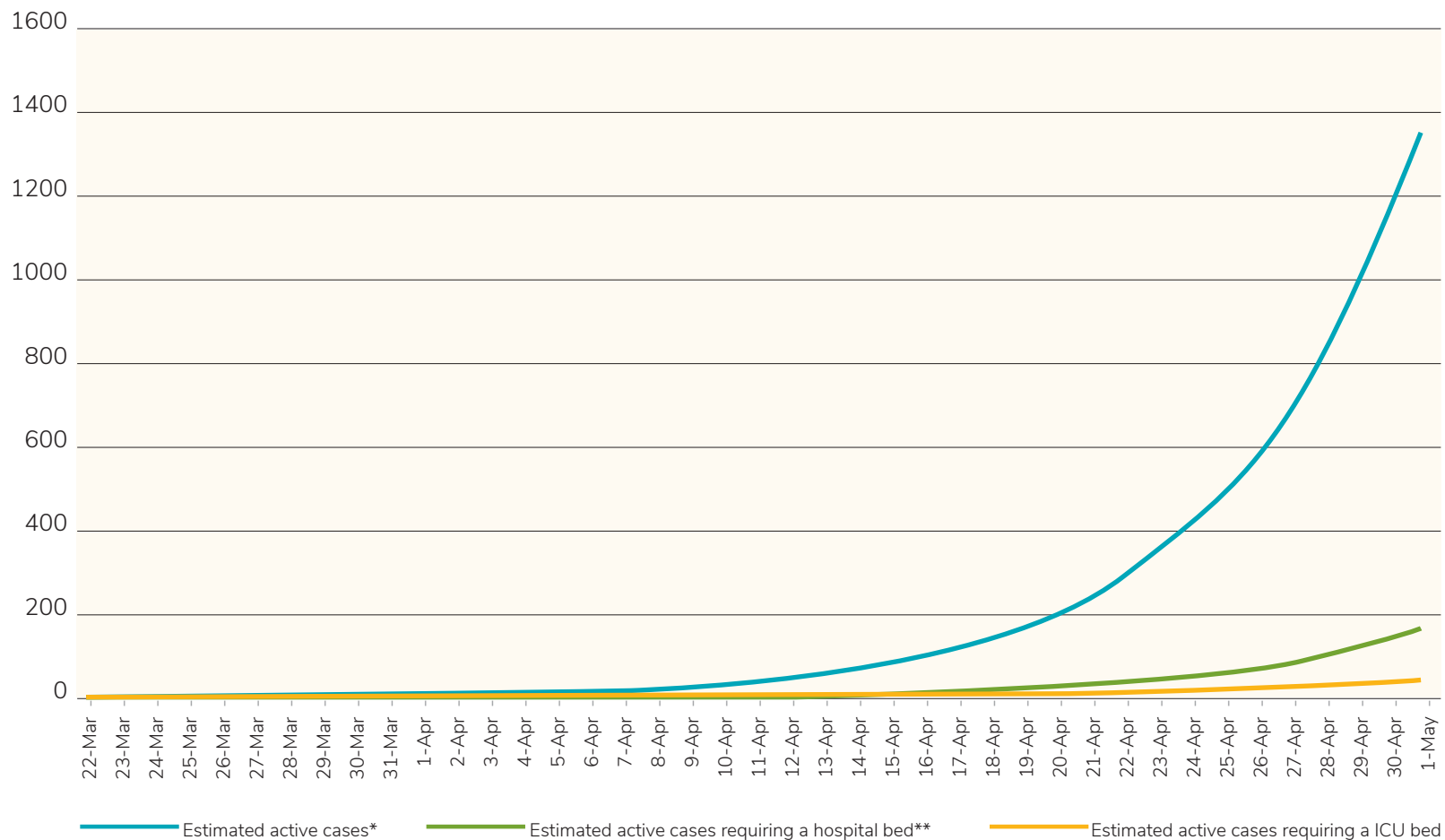
We know that the importation of COVID-19 cases has been and will continue to be part of Yukon's reality. This is why we ask people to self-isolate for 14 days when they enter Yukon. If these individuals have acquired COVID-19 during their travels, self-isolation provides a safe way to prevent them from spreading the disease to others.

It is important to note that, as described in Figure 2, with no public health measures in place, on May 1 2020 we could have seen over 1,300 active cases. Estimated total cases could have been upwards of 2,500. Figure 3 demonstrates the estimated number of cases that, on May 1 2020, would have required hospitalization in the absence of public health measures.

**Figure 2:** Estimated COVID-19 cases in the absence of public health measures vs. actual COVID-19 cases (March 22 to May 1, 2020)



**Figure 3:** Estimated COVID-19 cases requiring hospitalization in the absence of public health measures (March 22 to May 1, 2020)



\* Estimated active cases include all mild (no hospitalization), severe (requiring hospital bed) and critical (requiring ICU) cases.

\*\* Estimated active cases requiring a hospital bed, only includes severe cases. It does not include critical cases requiring

# Orders and directions for health protection, border control and civil society during a pandemic

In a state of emergency and a public health emergency, the Minister of Community Services and the Chief Medical Officer of Health can make Orders as required. The Chief Medical Officer of Health can also issue directions, which are different from Orders. The key differences are:

## Orders

Rules and requirements that are the law, and therefore legally enforceable. If someone violates an order, they may be charged. Charges under the Civil Emergency Measures Act (CEMA) may include fines up to \$500, up to 6 months in prison, or both. Charges under the Public Health and Safety Act (PHSA) may include fines of up to \$5,000/day.

## Directions

Guidance, best practices and strong advice to limit the spread of the virus. Directions issued should be followed to protect the health and safety of all Yukoners, especially the most vulnerable. Directions are not legally enforceable.

For a complete list of all Ministerial Orders signed to date, visit: <https://yukon.ca/en/health-and-wellness/covid-19/legislation-changes-covid-19>

For more details about specific orders and directions, visit: <https://yukon.ca/en/health-and-wellness/covid-19/orders-and-directions-covid-19>

# Border restrictions, enforcement and transitting through Yukon

Importation of COVID-19 to the territory from outside continues to be Yukon's number one risk, which is why strong border protections and community safety go hand-in-hand. To help keep Yukoners protected, on March 27 we declared of a state of emergency under the Civil Emergency Measures Act. Since that day, numerous orders have been signed under this act to bring into law measures to help limit the potential of COVID-19 from coming into the territory.

On April 2 it became law that anyone entering Yukon is required to self-isolate for 14 days and that non-residents transitting through to Alaska are now required to do so within 24 hours using a pre-determined route that limits opportunities for contact with Yukon communities.

On April 17, we enacted the Border Control Measures Order to further strengthen security at key points of entry. With this order in place, enforcement officers are stationed at Yukon's two entry points from the south along the Alaska Highway, and have the authority to refuse entry and turn back non-essential travellers and visitors to Yukon. This order is very explicit in detailing exactly who, and under what circumstances, entry will be permitted. All travellers entering Yukon by land or air are required to produce appropriate identification and documentation and to sign a declaration of their plan to self-isolate.

Presently, entry into Yukon is permitted for individuals providing acceptable evidence to an enforcement officer that they are:

- Yukon residents;
- non-resident family members of Yukon residents;
- delivering a critical or essential service;
- transitting through Yukon to a neighbouring jurisdiction (24-hour limitation); or
- exercising an Aboriginal or treaty right (for the time needed to exercise the right).

While our goal is to control who may enter Yukon in the interest of protecting Yukoners' health and safety, we also recognize that Yukon's shared border with Alaska means there will continue to be individuals transitting through the territory to get to points in Alaska. These individuals must confirm they have no symptoms of COVID-19, declare where they intend to go, and exit Yukon for Alaska within 24 hours.

Access through Yukon's borders now needs to be justified; however, we will not restrict Yukoners' family members travelling to the territory to provide support, and we will not restrict Transboundary First Nations Peoples who wish to engage in traditional activities.

To date, enforcement officers at the borders have obtained more than 6,572 signed declarations from Yukon residents, non-residents transitting through the territory and non-residents arriving for critical and essential purposes. In total, 37 travellers have been denied entry (current as of May 13, 2020).



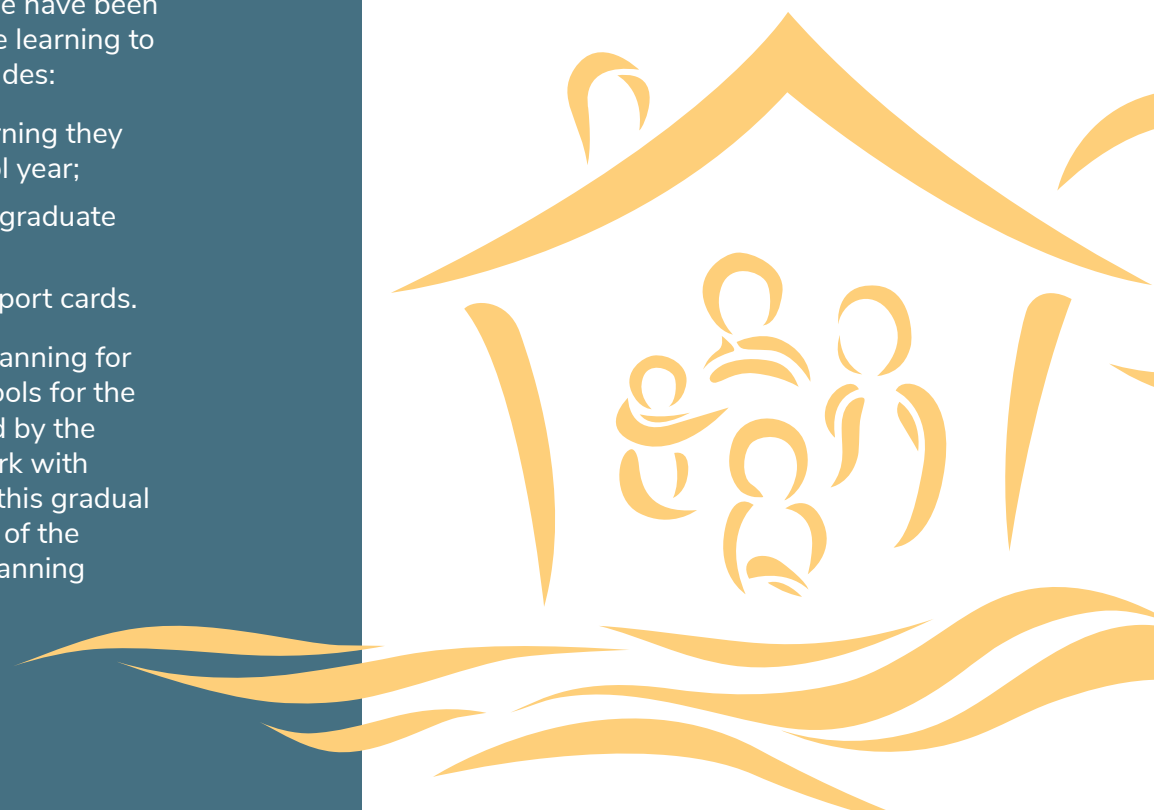
## Yukon schools Kindergarten to Grade 12

Face-to-face classes for Yukon K-12 public schools have been suspended for the remainder of the 2019-20 school year, based on recommendations from Yukon's Chief Medical Officer of Health.

While face-to-face classes are suspended, we have been providing a variety of distance and alternative learning to students from home since April 16. This includes:

- Providing students with the essential learning they need to complete by the end of the school year;
- Ensuring every student who is eligible to graduate Grade 12 will graduate.
- Ensuring all students receive their final report cards.

The Department of Education is beginning planning for gradual re-entry for students into Yukon schools for the beginning of the 2020-21 school year guided by the Education Pandemic Framework. We will work with partners and school communities to plan for this gradual return to classes in schools for the beginning of the new school year. These conversations and planning will be underway in May and June.



# Protecting Yukon's vulnerable populations



We recognize the current impact of this pandemic on everyone in the territory, and in particular those residents in need of additional support including those experiencing underlying health conditions, substance use and/or mental health challenges, precarious housing or homelessness, gender-based violence and individuals with a disability.

Work is underway to develop a mental health approach to COVID-19 as well as a collection of guidance documents for populations needing additional support. It is recognized that as our COVID-19 response evolves so will the mental health supports and resources required for Yukoners in greater need.

The Government of Yukon is committed to ensuring that people have access to mental health and social supports quickly, conveniently and reliably. We recognize that COVID-19 puts some Yukoners at increased risk of getting an infection and developing severe complications due to their health, social and economic circumstances and we have a plan in place to address these challenges.

# Protections and support for Yukon First Nations and Yukon rural communities

Yukon First Nations governments and municipalities have taken a leadership role in supporting their citizens and communities during the initial response to COVID-19. For example, First Nations have: issued payments to citizens struggling with the costs associated with the pandemic; organized supports to those who are in self-isolation; organized venues to serve as isolation facilities in rural communities; put in place additional measures to support the communities most vulnerable, including elders; encouraged compliance with the recommendations and orders of the Chief Medical Officer of Health; and widely shared information about COVID-19.

Municipalities have taken similar measures as Yukon First Nations governments in terms of providing local supports including emergency planning and local preparedness, providing financial support measures for citizens where possible (e.g. temporarily reducing or eliminating some fees), supporting the delay of property tax payments, and providing continuity of local government and municipal services. Local inter-agency committees have been formed and are hard at work in many communities. These supports will continue to be greatly valued during the gradual and phased transition to a new normal.

Throughout the pandemic, the Yukon government's Aboriginal Relations team has been engaging with Yukon First Nations governments and have heard their concerns that the spread of COVID-19 to a rural Yukon community could quickly overwhelm the available resources. Some Self-Governing Yukon First Nations

have chosen to put in place additional health and safety measures on Settlement Land, or have asked their members to voluntarily comply with additional measures. The Yukon government will continue throughout all reopening phases to engage closely with First Nations and share new information as it becomes available, so that Yukon First Nations governments have access to the necessary scientific evidence and expertise, upon which they can base their own decisions about how their governments will transition through the phases of recovery.

The Government of Yukon's Community Affairs team has also engaged with communities throughout the pandemic and provided supports for municipalities, local advisory councils, and unincorporated Yukon to navigate through local challenges to COVID-19. The Yukon government will continue to work closely with Yukon First Nations governments and municipalities to ensure that the systems are in place to support Yukon's rural communities as we progress through the phases of this plan. Furthermore, when guidance is developed to assist sectors of the economy or when public facilities and businesses are permitted to reopen, the unique needs of Yukon's rural communities will be taken into consideration, and where appropriate, specific measures will be considered.

For more information, see our Health Response Plan for Yukon Communities at:

[https://yukon.ca/sites/yukon.ca/files/hss/hss-imgs/covid\\_19\\_health\\_response\\_plan\\_for\\_yukon\\_communities.pdf](https://yukon.ca/sites/yukon.ca/files/hss/hss-imgs/covid_19_health_response_plan_for_yukon_communities.pdf)

# Role of the public service in responding to COVID-19

Government of Yukon public servants have been involved in all aspects of the pandemic response, whether on the front lines, or adjusting to working from home while balancing family responsibilities, or remaining in the workplace to ensure the uninterrupted delivery of services to Yukoners. This has been a challenging time for all, but the professionalism and dedication of our public servants has been exceptional as we strive to adjust and adapt to the ever-evolving situation.

In some cases, areas within the public service have innovated and devised new ways of delivering services during the pandemic. Both through new technologies and new processes, these efficiencies and learnings will be maintained and built upon as we transition through the various re-opening phases and towards our new normal.

One of these innovations has been a sudden shift to many employees working from home. While it is too soon to tell what the future may hold, we will continue to be flexible, learn from this experience, and keep an open mind as to what the future government workplace may look like when the COVID-19 pandemic has passed. We are exploring the development of new approaches and policies to working from home that may endure well beyond COVID-19.

In the near term, and in-line with the phases of this plan, the Government of Yukon will begin a gradual, phased approach to returning Yukon government public service employees to the workplace, where it makes sense. Public health and safety, including the well-being of employees, is our top priority. Guidelines for Phase 1 of gradually returning Government of Yukon employees to the workplace can be found at <https://yukon.ca/en/collective-agreements-hr-policies>. Additional guidelines will be developed as we transition through the various phases of this plan.



# Overview of economic supports for Yukoners

As of May 12, 2020, the Government of Yukon has announced an estimated \$26.7 million in economic supports for Yukoners.

These programs and funding are both proactive and reactive measures to support Yukoners, businesses, and our arts and culture programming. We will continue to find ways to support Yukoners, through developing our own initiatives but also leveraging federal aid to maximize relief for Yukon's affected industries.

One example is aviation. It is essential that we maintain flight services to the territory. They connect our communities, deliver supplies and ensure we can access medical service in other jurisdictions. Another example is support for fixed costs for businesses. Some of our small businesses were forced to close their doors, while a great many more felt the need to close out of an abundance of caution. Those that stayed open saw their revenues decline. By helping cover businesses' fixed costs, we are trying to help prevent owners from having to close their doors for good. In the coming weeks, the Government of Yukon will release its Economic Recovery Plan as we look toward the future together.

The plan will map out a framework and actions in support of Yukon's key sectors as we continue to work with our partners on the Yukon Business Advisory Council and the Yukon Tourism Advisory Board. Our partners in the business community have been vital during this difficult time in providing us with the information we need to make informed choices as a government and be able to react swiftly in response to this pandemic. As we move into recovery, we will release more measures to revitalize Yukon's economy. Our private and community partnerships will inform these decisions. We are going to be reaching out to our partners in the coming days and focused on the following priorities:

- balance health advice with the need for economic recovery
- consider the unique needs of various industries and sectors
- ensure community needs are balanced with economic growth
- align our work with federal programs and initiatives to maximize benefits to Yukoners
- engage directly with the business community and other stakeholders
- connecting existing initiatives into the planning process, such as the Yukon Tourism Development Strategy

As we connect with Yukoners across the territory for feedback and ideas, there are going to be a lot of ideas in both the short-term and the long-term. It's important to note that not all supports for businesses and the economy come with a price tag. Through our work with the Business Advisory Council and the Yukon Tourism Advisory Board, we hear input that helps to shape an innovative response to this unprecedented situation. Small actions like ensuring government invoices are paid quickly or that people can swiftly sign up for direct deposit can have a huge impact on cash flow for Yukoners and their businesses.

Each day, we develop, create and establish more relief measures for the public that help hard-working Yukoners keep local businesses afloat. There are supports that will emerge beyond the initial stages of the pandemic, as well as ones that will target re-opening, re-invigorating and recovery in our economic future.

On the next page is an overview of some of the supports provided to date. The dollar figures for each item are only estimates of program funding and do not reflect the actual amounts spent. They can vary based on applications, federal funding and changes to conditions during the pandemic.



| Initiative                                      | Description   | Est. value | Details   |
|---|---|------------|---|
| <b>Economic and fiscal response initiatives</b> |   |            |   |
| Rent assist program                             | Tenants and landlords who are affected by income losses during the COVID-19 pandemic will benefit from rent assistance.   | \$1.29M    | May 11, 2020<br><a href="#">News Release</a>  |
| COVID-19 call centre                            | Established an external call centre to handle COVID related inquiries.  | \$236k     | May 8, 2020<br><a href="#">News Release</a>   |
| Air North financial support                     | Direct support to Air North using Federal Funds to ensure a minimum of 5 weekly flights to Vancouver to transport essential supplies, equipment, essential staff and testing samples.     | \$1.1M     | May 4, 2020<br><a href="#">News Release</a>   |
| Aviation fees                                   | Waiving all airport landing, aircraft parking and loading fees. Suspension of a variety of fees and charges to commercial aviation operations at government owned airports and aerodrome. | \$780k     | May 4, 2020<br><a href="#">News Release</a><br>March 26, 2020<br><a href="#">News Release</a> |
| Relief from mining assessment                   | Provide relief from assessment work and/or making payment in lieu of work with respect to Quartz Mining Act and Placer Mining Act.  | \$500k     | Announced via email April 24<br><a href="#">News article</a>                                  |
| Delay liquor price increases                    | Delaying liquor price changes for wholesale customers.  | \$224k     | YLC contacted licensees   |
| CERB exempt from social assistance              | Yukoners receiving social assistance benefits will not experience a reduction if they receive the Canada Emergency Response Benefit.  | \$810k     | April 27, 2020<br><a href="#">News Release</a>  |
| Yukon business relief program                   | Yukon businesses impacted by the COVID-19 pandemic will receive support to cover fixed business costs, including rent, utilities and business insurance.                                  | \$10M      | April 27, 2020<br><a href="#">News Release</a>  |
| Sick-leave provisions                           | Rebate for workers and self-employed to receive paid sick leave if they are sick and required to self-isolate for 14 days.  | \$6.2M     | March 26, 2020<br><a href="#">News Release</a>  |
| Event reimbursement program                     | Temporary support to cover up to 100% of unique, irretrievable financial losses due to the cancellation of events due to COVID-19.  | \$3.5M     | April 1, 2020<br><a href="#">News Release</a>   |

| Initiative  | Description  | Est. value | Details  |
|---|--|------------|--|
| <b>Economic and fiscal response initiatives (cont.)</b> |  |            |  |
| Tourism Marketing Cooperative Fund                      | One-time increase to the Tourism Cooperative Marketing Fund and one-time removal of the 50% contribution by the business. Expanded scope of eligible projects.               | \$1.0M     | March 27, 2020<br><a href="#">News Release</a> |
| WCB deferrals   | Deferring some workers compensation health and safety premium payments, reimburse some premiums paid up-front, waive penalties and interest.                                 | \$800k     | March 16, 2020<br><a href="#">News Release</a> |
| Arts Fund   | Fund increased by \$125,000 for the April intake and changed to allow applications for 100% of the eligible costs.   | \$125k     | May 27, 2020<br><a href="#">News Release</a>   |
| Phones to vulnerable women                              | Providing 325 cell phones to vulnerable women over the next 4 months   | \$94k      | April 3, 2020<br><a href="#">News Release</a>  |
| Advanced Artist Award                                   | April 1 intake will have \$150,000 available in funding, \$75,000 more than usual. Supports artists to use the COVID-19 period to enhance artistic professional development. | \$75k      | March 27, 2020<br><a href="#">News Release</a> |
| Health care insurance plan coverage                     | Extending the health care insurance plan coverage to Yukoners unable to return home.   | TBD        | March 25 2020<br><a href="#">News Release</a>  |
| Funding for childcare operators                         | Funding for childcare centre and day home operators to cover wages and fixed costs to support them remaining open.   | TBD        | April 6, 2020<br><a href="#">News Release</a>  |
| <b>Economic response - social and other supports</b>    |  |            |  |
| Business Advisory Council                               | Established a Business Advisory Council to provide advice on government's response to COVID-19 from the business community.  |            | March 25, 2020<br><a href="#">News Release</a> |
| Property tax deferral                                   | Deferral of property taxes until September 2, 2020.  |            | April 23, 2020<br><a href="#">News Release</a> |
| Eviction protection                                     | Regulation changes under <i>Residential Landlord and Tenants Act</i> to prevent COVID-related evictions.   |            | March 26, 2020<br><a href="#">News Release</a> |



| Initiative   | Description   | Est. value | Details  |
|--|---|------------|--|
| <b>Economic response - social and other supports</b> |   |            |  |
| Immediate invoice payment                            | Adjusted government procedures to process and pay invoices immediately to ensure local contractors and businesses have payment at a time of limited cash flow.  |            | Internal process, no public comms                      |
| On Yukon Time program                                | On Yukon Time funding (\$75,000) will be focused on initiatives that can be presented without in-person gathering.  |            | March 27, 2020<br><a href="#">News Release</a>         |
| Honouring Transfer Payment Agreements                | Support the Yukon arts, culture, sport and recreation, and other non-governmental work by honouring most transfer payment agreements or making allowances for events/activities that have been delayed or canceled due to COVID-19. |            | Depts contact recipients directly.                     |
| Yukon Tourism Advisory Board                         | Provides advice to the Minister on strategic tourism issues and works to implement the Yukon Tourism Development Strategy. Mandate is broad but will focus on COVID-19 impacts as needed.   |            | March 19, 2020<br><a href="#">News Release</a>         |
| Waiving liquor re-stocking fee                       | Waiving the re-stocking fee when licensees are returning un-used liquor.  |            | Yukon Liquor Corporation direct contact with licensees |
| <b>General and Health Related Response</b>           |   |            |  |
| Drivers licensing requirements                       | Deferral of requirement for affected drivers to provide a medical examination certificate during the state of emergency.  |            | April 28, 2020<br><a href="#">News Release</a>         |
| Ventilators  | Six ventilators have been received on loan from the Public Health Agency of Canada's emergency response services.   |            | April 27, 2020<br><a href="#">News Release</a>         |
| Pivot Cold Climate Innovation funding                | Shift program scope of the Cold Climate Innovation funding provided to Yukon College to COVID pivoting or opportunities   |            | April 14, 2020<br><a href="#">News Release</a>         |
| Suspension of face to face classes                   | Face to face classes suspended for the rest of the 2019-20 school year.   |            | April 7, 2020<br><a href="#">News Release</a>          |
| Parks and campgrounds delayed                        | Delaying the opening of territorial parks and campgrounds and sale of camping permits until June.   |            | April 6, 2020<br><a href="#">News Release</a>          |

| Initiative  | Description  | Est. value | Details  |
|---|--|------------|--|
| General and Health Related Response - Non-Financial |  |            |  |
| Waste services                                      | Delay of tipping fee introduction at some landfills. Closure of recycling centers and free stores.               |            | March 30, 2020<br><a href="#">News Release</a> |
| Special hunting guide license lottery               | Application deadline for special hunting guide license lottery delayed until June.                               |            | March 27, 2020<br><a href="#">News Release</a> |
| Virtual care  | Virtual access to physicians to provide ongoing health care while encouraging physical distancing.               |            | March 23, 2020<br><a href="#">News Release</a> |
| Respiratory Assessment Centre                       | Respiratory Assessment Centre set up to provide support and assessment to people with acute respiratory illness. |            | March 19, 2020<br><a href="#">News Release</a> |
| Online self-assessment                              | Online screening tool for COVID-19.  |            | March 18, 2020<br><a href="#">News Release</a> |

# The path forward

Yukoners can be very proud of our efforts to beat back COVID-19. We made sacrifices and came together like never before to keep each other safe and stop the spread of this deadly virus in Yukon.

Now, we are turning our minds to how to safely return back to work, to be with friends and family, to enjoy our campgrounds, outdoor spaces, and unique freedoms inherent to our beautiful territory. This plan carefully guides us forward.

Our strong border protections will continue allowing us to relax measures here at home, with communicable disease control to detect and prevent spread from new cases of COVID-19 when they arrive. We will continue to balance our actions with evolving conditions across Canada and internationally.

Inside Yukon, our plan focusses on easing restrictions based on monitoring the epidemiology of COVID-19 and careful evaluation as each new measure comes into force. This should allow businesses to reopen, along with needed services like dental clinics, daycares and eventually our schools.

The plan supports a more resilient future where innovators and entrepreneurs can adapt and build a foundation for an even more prosperous Yukon. This vision for a reinvigorated and more sustainable future is not a foreign concept for Yukoners; it is also

the foundation of the territory's recently co-developed *Our Clean Future* draft strategy for climate change, energy and a green economy. This pandemic has not diminished the need to take decisive action on addressing the impacts of climate change; rather it has reinforced the awesome power that exists within each of us to set our society on an immediate and far cleaner path. Through this pandemic, we have been forced to reconsider how we work and interact on a daily basis and we can learn from how we have adapted to these challenges.

Our battle with COVID-19 is not over. However, the risk of acquiring COVID-19 in Yukon remains low, and as long as we follow the guidance of our health professionals, we can enjoy living in one of the least restricted parts of the country. This plan builds on that foundation of optimism.

Going forward our government will continue listening to and working with Yukoners. The most informed health experts and government officials will always rely on community wisdom and engagement to chart the right course.

Stay informed, take vigilant care of your personal health and follow the six steps to staying safe.



  
**Yukon**