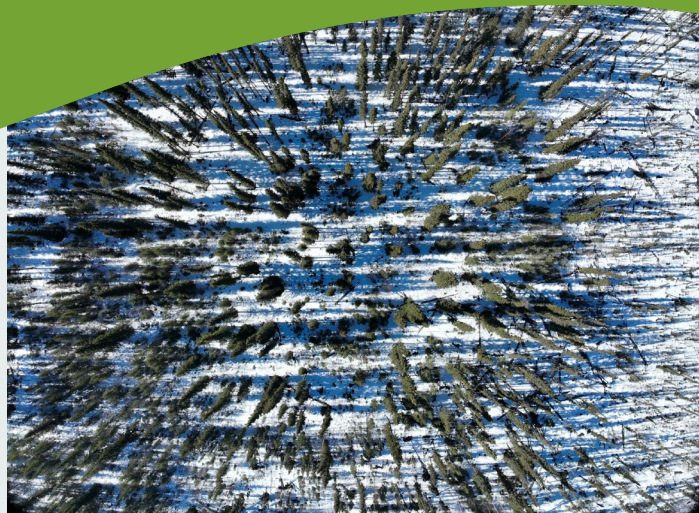


# Mayo five-year wood supply update

The Mayo district is in north-central Yukon. Timber harvesting activity in the district has been limited in recent years, but several large timber harvest plans are in place and new projects are in development. The district holds potential for increased fuel wood and sawlog harvesting, as well as wildfire protection work.

Current efforts are focused on improving access and identifying opportunities for commercial and personal use harvesting, particularly in the McQuesten and Partridge Creek areas.



## What's happening in the district

The district is largely covered by the landscape-level McQuesten Timber Harvest Plan, with activities focused on salvaging burned timber, harvesting green sawlogs, and fuel abatement where access development is not required. Commercial activity has historically been low, but planning has been extensive.

The Partridge Creek West project for green sawlogs has completed Yukon Environmental and Socio-economic Assessment Board (YESAB) review, and access development is the next step. The draft Crooked Creek THP, located south of Stewart Crossing, may also contribute to the Mayo wood supply.

## Current wood supply snapshot

- **Forest Resources Management Plan:** No.
- **Active Timber Harvest Plans:** 2 – McQuesten and Partridge Creek.
- **Available Timber:** Approximately 500 cubic metres of timber per year in the McQuesten THP. No projects have been screened through YESAB so harvesting activities would be limited in size and close to existing access. 18,538 cubic metres of timber in the Partridge Creek West project area.
- **Planned Timber Harvest Plans:** 0.
- **Community Wildfire Protection Plan:** Yes.
- **Personal Use Fuel Wood Areas:** 19 areas, 4,160 hectares.
- **Primary Wood Use:** Fuel wood, green sawlogs, and small-scale biomass for local use.
- **Active Commercial Harvesters:** No.
- **Average Annual Harvest:** N/A.

## Partnerships and Industry

Opportunities for small-volume commercial permits are available.

## Long-term wood supply outlook

Fuel wood harvesting opportunities are likely to increase from areas impacted by recent wildfires. The district has a strong network of mining and exploration roads, but terrain challenges limit easy access to timber.

Sawlog supply will be available in the Partridge Creek THP. There has been limited demand for sawlogs over the past decade. If commercial interest grows, further planning and access development will be needed.



## About the district

The Mayo district covers 42,000 square kilometres in north-central Yukon. It includes the Traditional Territories of First Nation of Na-Cho Nyäk Dun, Selkirk First Nation and Tr'ondëk Hwëch'in, as well as the asserted traditional territories of Ross River Dena Council and Liard First Nation.

Updated: April 1, 2026

Contact Forest Management Branch at [forestry@yukon.ca](mailto:forestry@yukon.ca) or 867-456-3999 for the most current information.