

Roadway Maintenance Improvement Program

Highways and Public Works




Yukon

Asset Management

- Optimized decision-making
- Data Driven
- Strategic investments





Roadway Maintenance Improvement Program

- Roadside Delineation
- Barriers
- Roadside Obstructions
- Line Painting
- Vegetation Control

Roadside Delineation

- Guide drivers to stay within lanes
- Status: Options study (2019–20)
- Future: Feasibility Study & Test Section (2020–21)



Barriers

- Keep vehicles on road; protect from hazard
- Site selection and placement in 2019–20



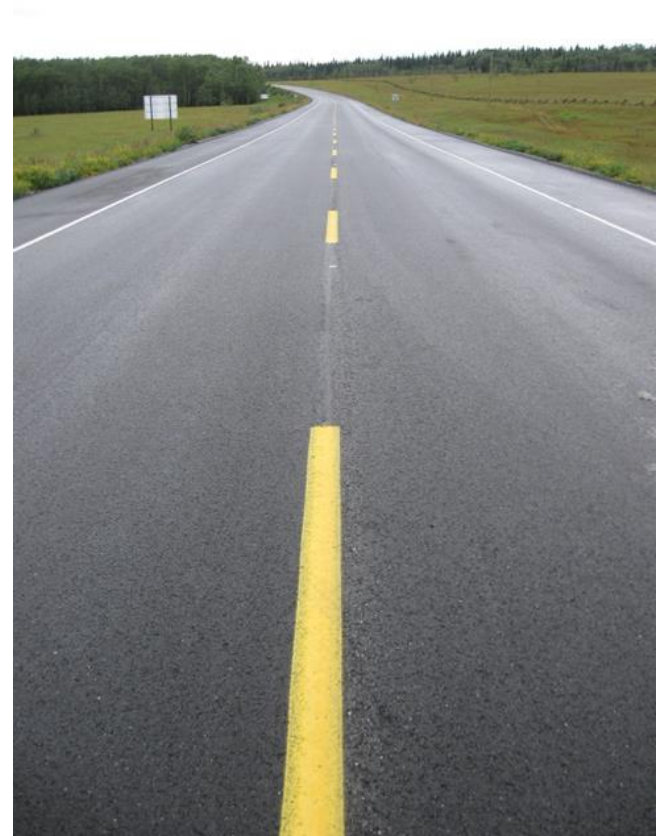
Roadside Obstructions

- Remove large objects from clear zone; mitigate roadside hazards
- Status: Site identification



Line Painting

- Denote highway lanes
- Status: Defining cyclical painting plan



Vegetation Control

- Improves sightlines
- Status:
 - site selection complete for 2019–20;
 - contractor information session complete
 - tenders to be advertised



DRAFT

Interim Primary Highway Functional Classification

3/12/2019

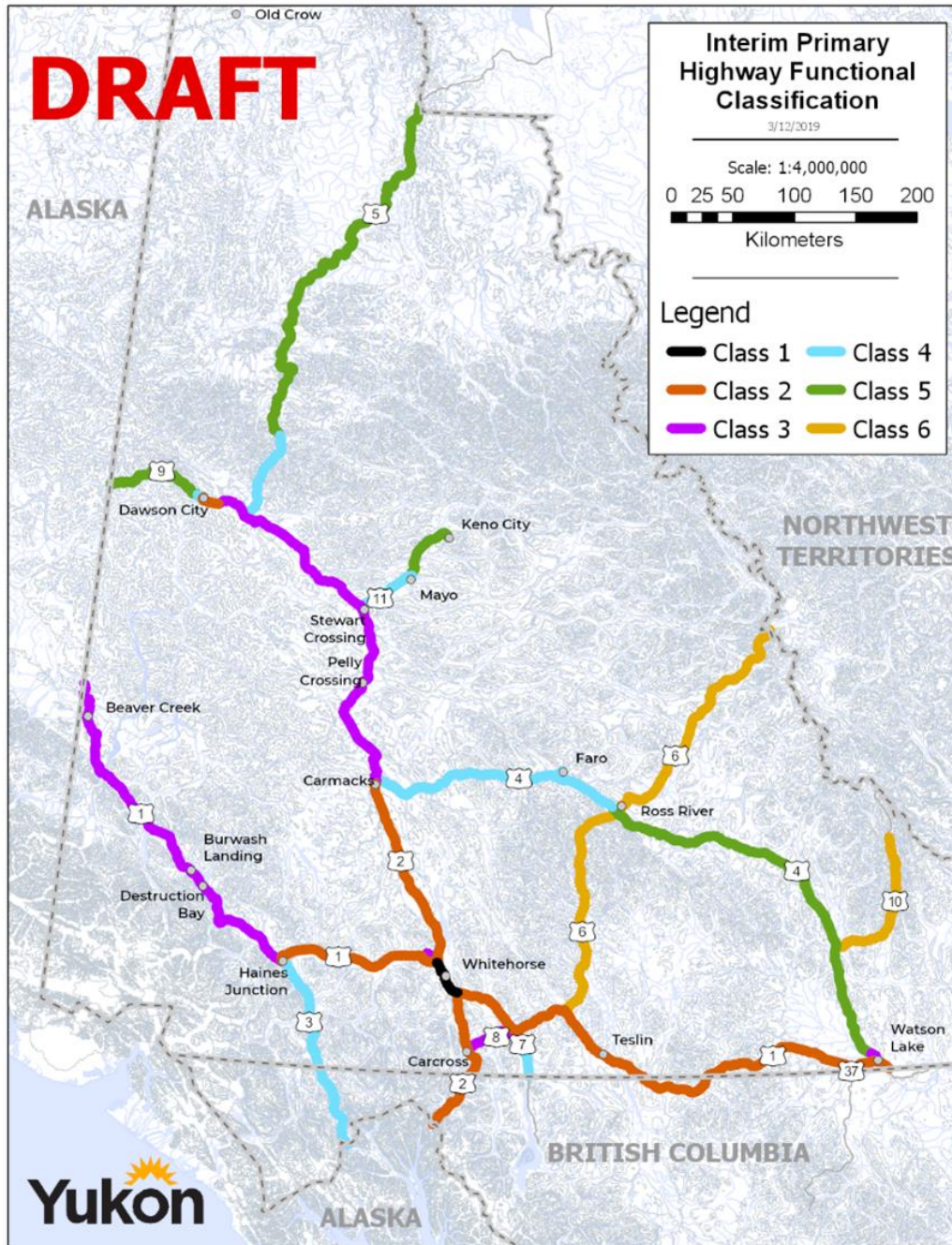
Scale: 1:4,000,000

0 25 50 100 150 200

Kilometers

Legend

- Class 1
- Class 2
- Class 3
- Class 4
- Class 5
- Class 6

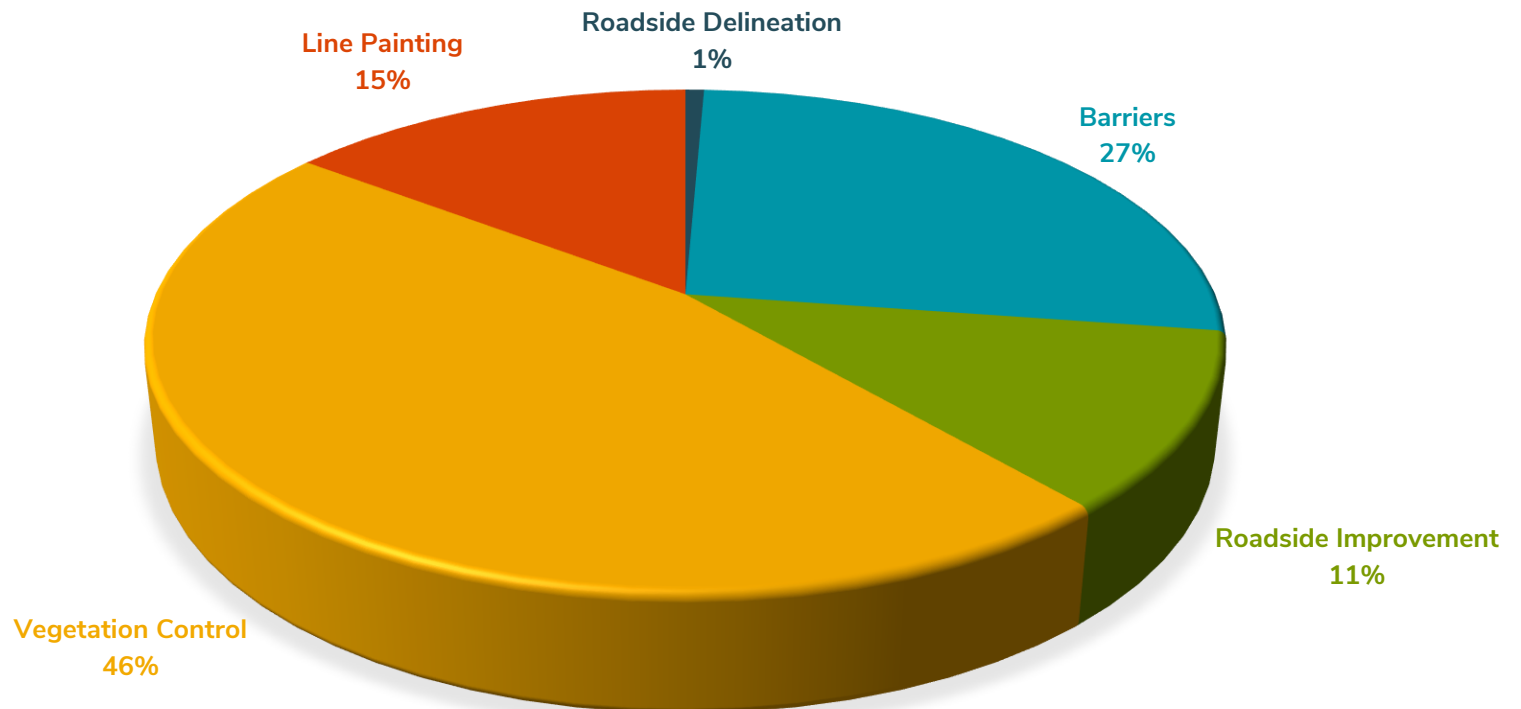




Highway Functional Classes

Class	Average Daily Volume	Characteristics
1	>3,000	Linking large communities, major trade, significant tourists
2	>500	Linking large communities, major trade, significant tourists
3	>200	Linking small communities, internal trade, seasonal tourists
4	>100	Linking small communities, resource production, seasonal tourists
5	>20	Resource or seasonal road, minor recreation area
6	<20	All other roads

2019–20 Budget





Vegetation Management System (VMS)

Vegetation Management System Objectives

- Longer sightlines
- Wildlife visibility
- Clear zone safety
- Improved drainage
- Improved visibility
- Structural protection





Program Breakdown

Class	Width	Frequency
1	30 m	Annually
2	20 – 30 m	3 years
3	10 m	3 years
4	10 m	6 years
5	5 m	6 years
6	5 m	12 years

Year 1 of 6

Highways

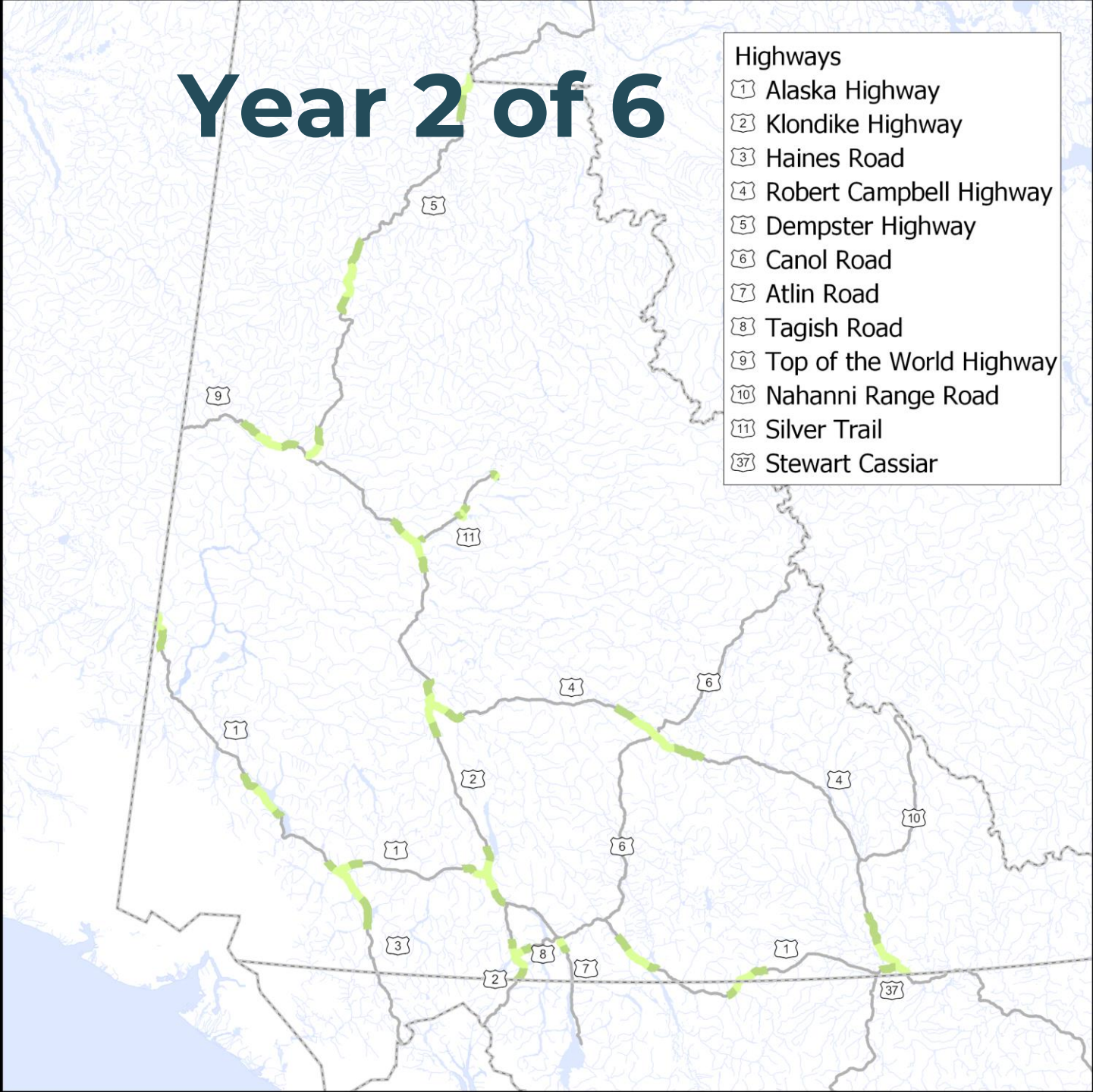
- 1 Alaska Highway
- 2 Klondike Highway
- 3 Haines Road
- 4 Robert Campbell Highway
- 5 Dempster Highway
- 6 Canol Road
- 7 Atlin Road
- 8 Tagish Road
- 9 Top of the World Highway
- 10 Nahanni Range Road
- 11 Silver Trail
- 37 Stewart Cassiar



Year 2 of 6

Highways

- 1 Alaska Highway
- 2 Klondike Highway
- 3 Haines Road
- 4 Robert Campbell Highway
- 5 Dempster Highway
- 6 Canol Road
- 7 Atlin Road
- 8 Tagish Road
- 9 Top of the World Highway
- 10 Nahanni Range Road
- 11 Silver Trail
- 37 Stewart Cassiar



Year 3 of 6

Highways

- 1 Alaska Highway
- 2 Klondike Highway
- 3 Haines Road
- 4 Robert Campbell Highway
- 5 Dempster Highway
- 6 Canol Road
- 7 Atlin Road
- 8 Tagish Road
- 9 Top of the World Highway
- 10 Nahanni Range Road
- 11 Silver Trail
- 37 Stewart Cassiar



Year 5 of 6

Highways

- 1 Alaska Highway
- 2 Klondike Highway
- 3 Haines Road
- 4 Robert Campbell Highway
- 5 Dempster Highway
- 6 Canol Road
- 7 Atlin Road
- 8 Tagish Road
- 9 Top of the World Highway
- 10 Nahanni Range Road
- 11 Silver Trail
- 37 Stewart Cassiar



Year 6 of 6

Highways

- 1 Alaska Highway
- 2 Klondike Highway
- 3 Haines Road
- 4 Robert Campbell Highway
- 5 Dempster Highway
- 6 Canol Road
- 7 Atlin Road
- 8 Tagish Road
- 9 Top of the World Highway
- 10 Nahanni Range Road
- 11 Silver Trail
- 37 Stewart Cassiar

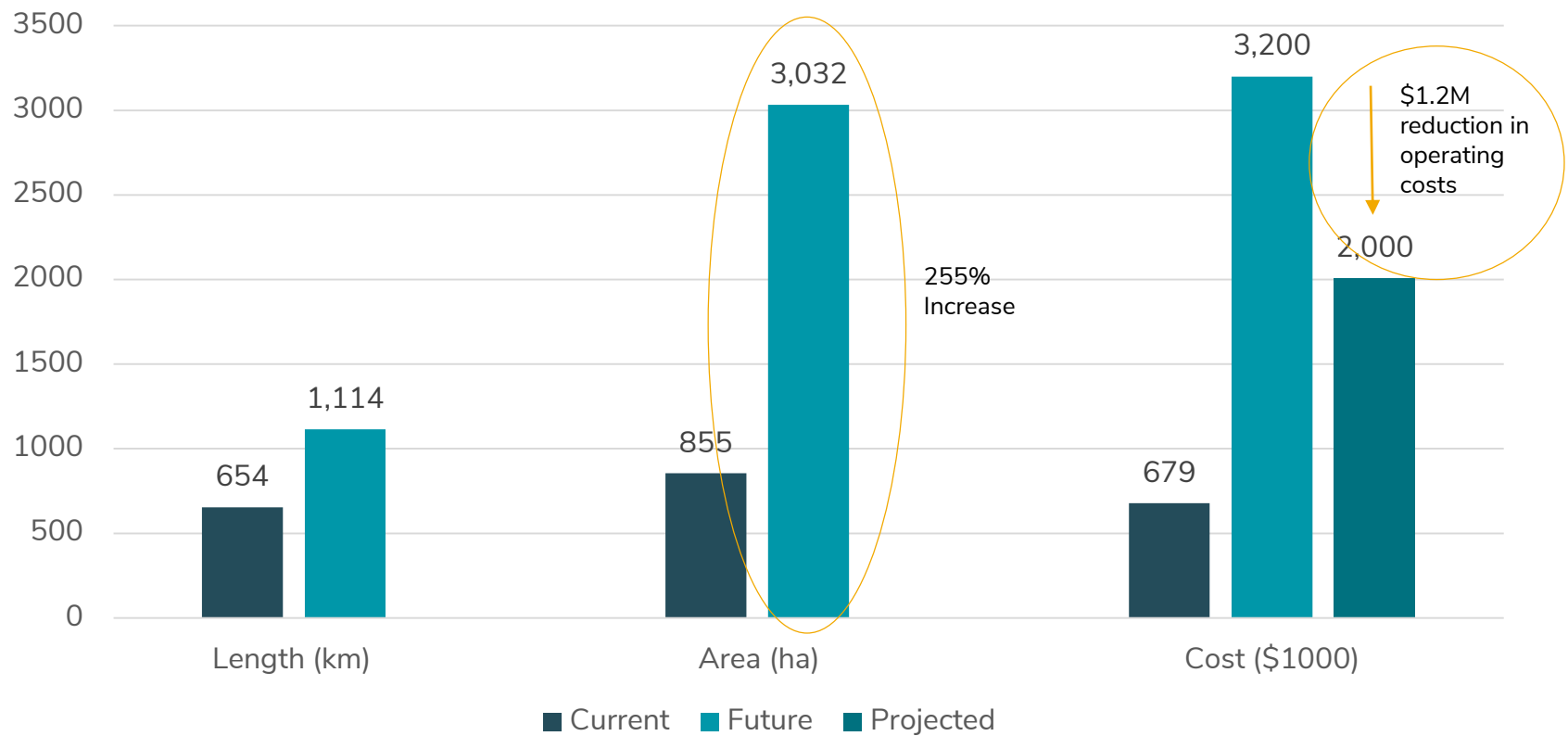




Expected Benefits

- Improved highway safety
- Increased highway life cycle
- Effective budget allocation

Program Increase





Line Painting Program



Line Painting Program

- Past: “worst first” as budget allowed
- Future: systematic rating and schedule





Rating: 5



Rating: 4



Rating: 3



Rating: 2



Rating: 1



Rating: 1



Rating: 2



Rating: 3



Rating: 4



Rating: 5



Program Rotation

Class	Yellow Frequency	White Frequency
1	Every year	Every year
2	Every three years	Every three years
3	Every three years	Every three years
4	Every six years	N/A
5	Every six years	N/A
6	N/A	N/A

Year 1 of 6



Year 2 of 6



Year 3 of 6



Year 4 of 6



Year 5 of 6



Year 6 of 6





Expected Benefits

- Higher quality/longer lasting
 - Sweeping
 - Thicker paint application
 - Annual arrows/gores/crosswalks
- Improved safety standard
- Increased painting volume

Program Increase

