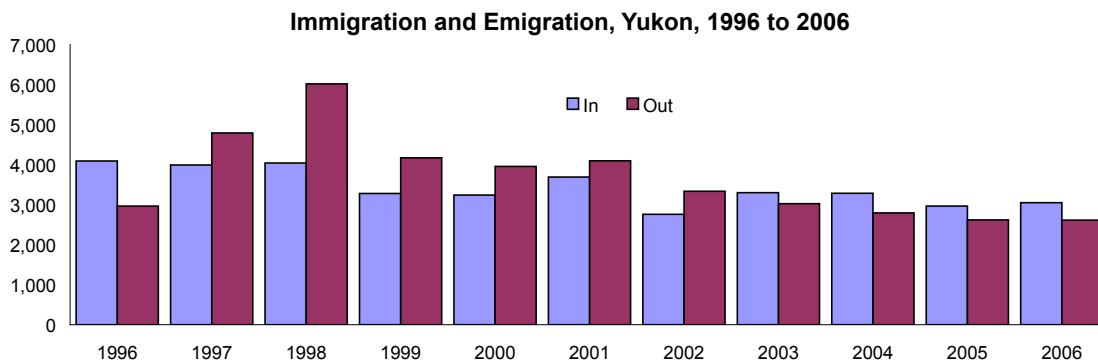


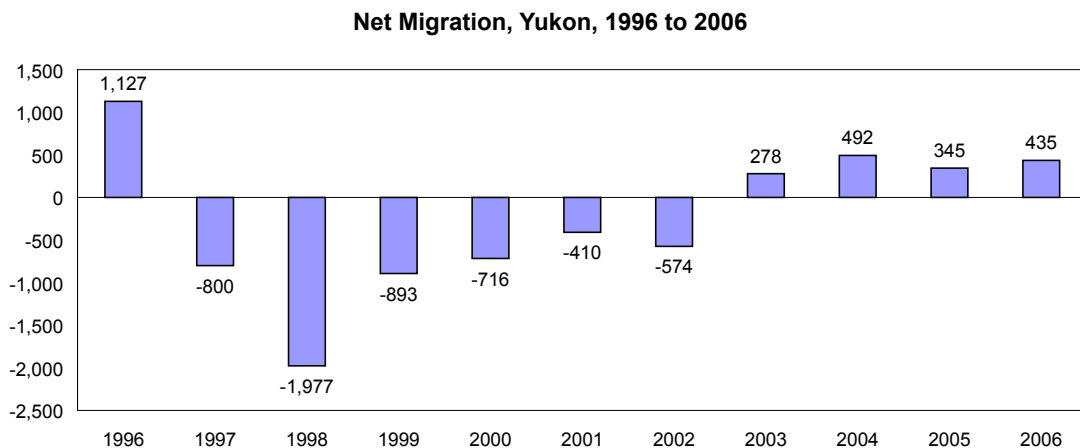
Yukon Migration Patterns 1996–2006

Highlights

This report examines migration patterns in the Yukon and is divided into three sections. The first section looks at immigration and emigration for the Yukon from 1996 to 2006. It examines both quarterly and yearly migration patterns by gender and age. The second section looks at the median length of residency in the Yukon for out-migrants (those who have moved out of the Yukon during the year and not returned) and non-migrants (those who remained resident in the Yukon during the year) by gender, age and ethnicity. The third section compares continuous length of residency in the Yukon in 2006 with 2001, also by gender, age and ethnicity. All of the migration numbers used in this report are based statistically on the Yukon Bureau of Statistics' population data (which are based on the Yukon Health Care registration file).



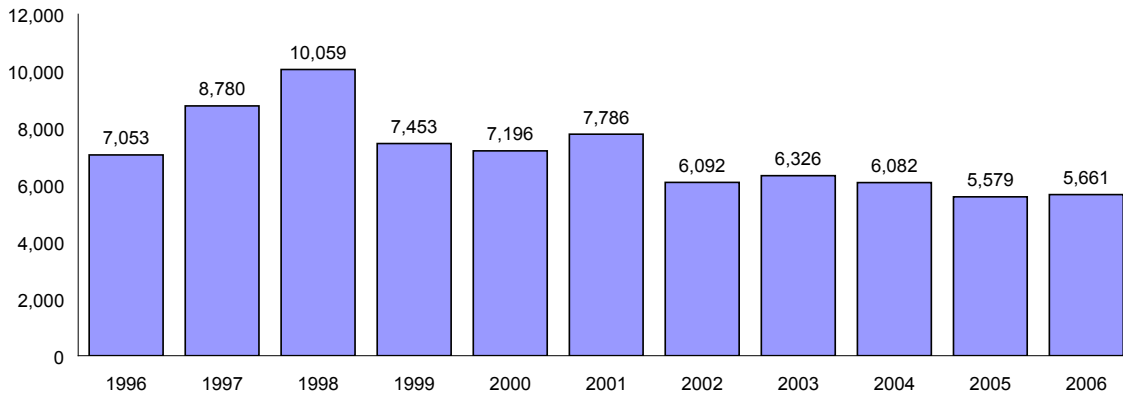
In total, from 1996 to 2006, more people have moved out of the Territory than have moved into the Territory, with losses exceeding gains for six consecutive years (1997 to 2002). Subsequently, immigration exceeded emigration in 2003 through 2006. In 2006, 2,613 people emigrated from the Yukon, while 3,048 people immigrated to the Yukon.



Net migration is the difference between the number of people entering the Yukon (immigration) and the number of people leaving the Yukon (emigration). From 1996 to 2006, average annual net migration for the Yukon was -245. Since 1996, the Yukon has experienced two periods of population growth and one period of population decline. The largest increase in the Yukon population occurred in 1996 when net migration equalled 1,127, and the largest decrease was in 1998 when net migration was -1,977.

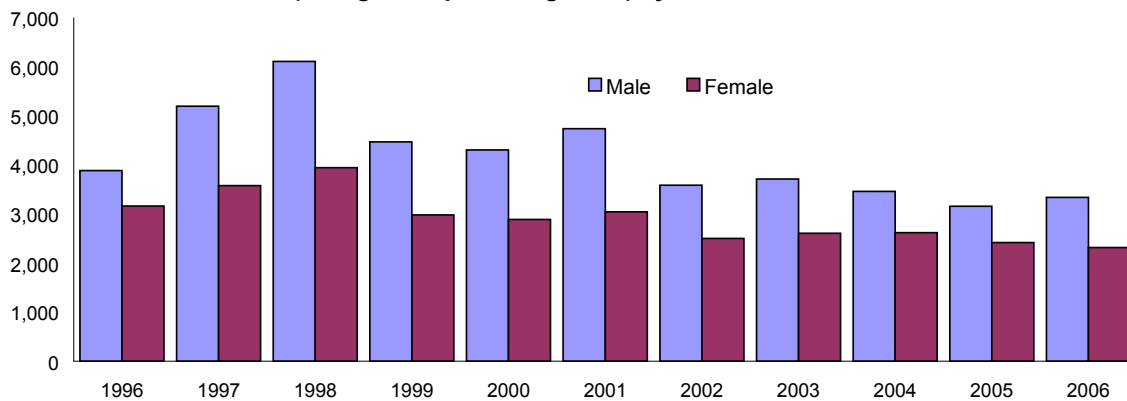
Yearly Turnover

Turnover (Immigration plus Emigration), Yukon, 1996 to 2006



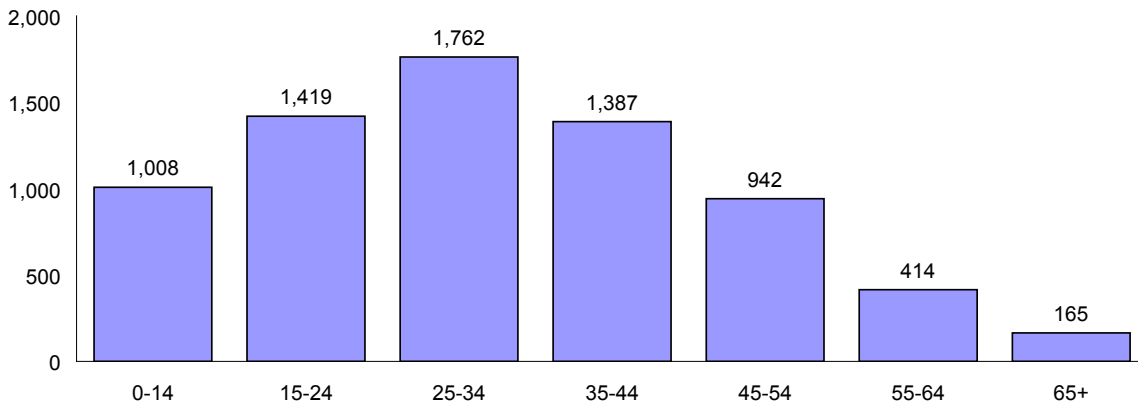
From 1996 to 2006, the average annual turnover (immigration plus emigration) for the Yukon was 7,097. Turnover shows the segment of the population that is mobile and affects things such as the housing market, rental prices and vacancy rates.

Turnover (Immigration plus Emigration) by Sex, Yukon, 1996 to 2006



Since 1996, more men than women moved into or out of the Territory, indicating that in the Yukon men are more mobile than women. From 1996 to 2006, the average annual turnover was 4,180 for men and 2,917 for women.

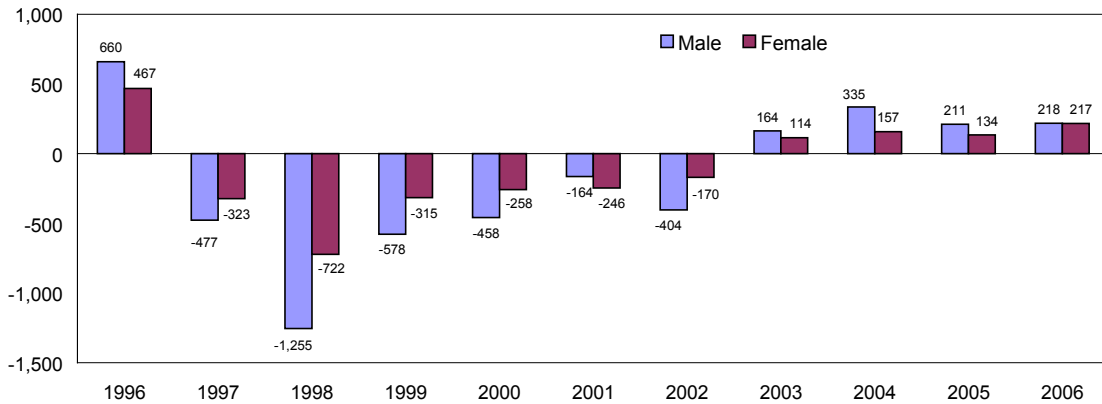
Average Turnover (Immigration plus Emigration) by Age, Yukon, 1996 to 2006



People in younger age groups are also more mobile. Average annual turnover from 1996 to 2006 shows that fewer people in age groups 45–54, 55–64 and 65+ were moving into or out of the Territory. The age group with the highest average annual turnover was the 25–34 year-old age group (1,762).

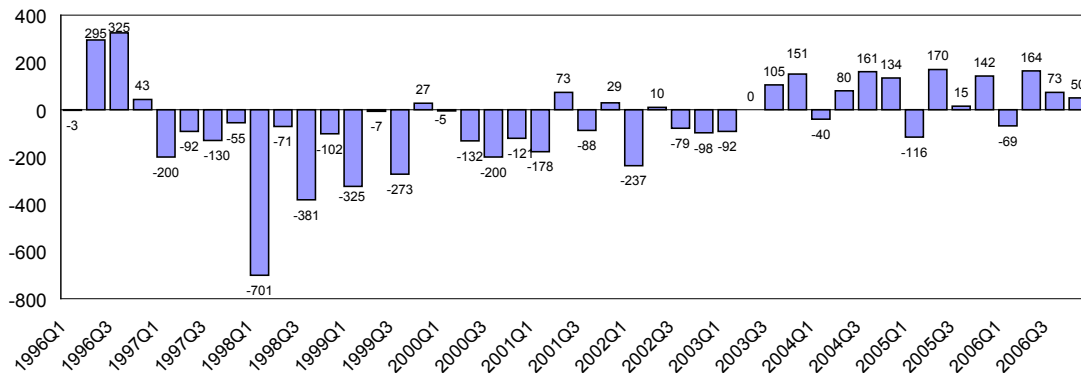
Migration by Sex

Net Migration by Sex, Yukon, 1996 to 2006



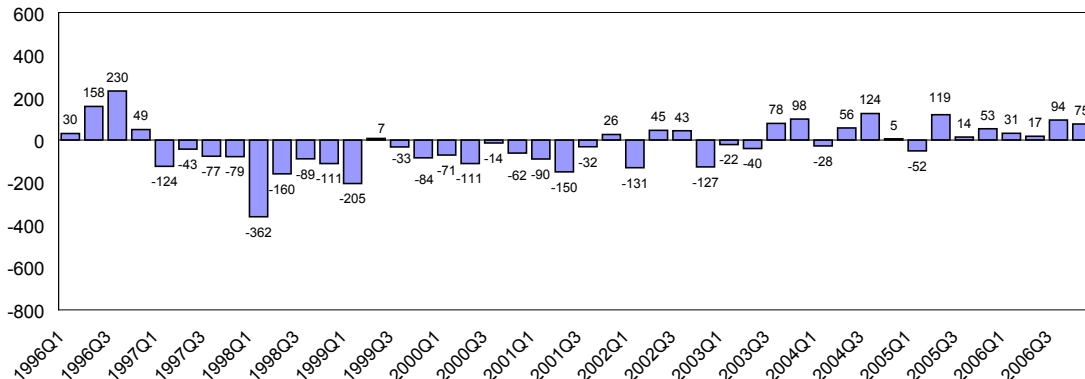
The pattern of net migration is similar for males and females, although males are more mobile, exceeding females in migration in each year except 2001. From 1996 to 2006, average annual net migration was -159 for males and -86 for females. In 2006, net migration for both males and females was positive, following a trend that started in 2003.

Net Migration, Males, Yukon, 1996 to 2006



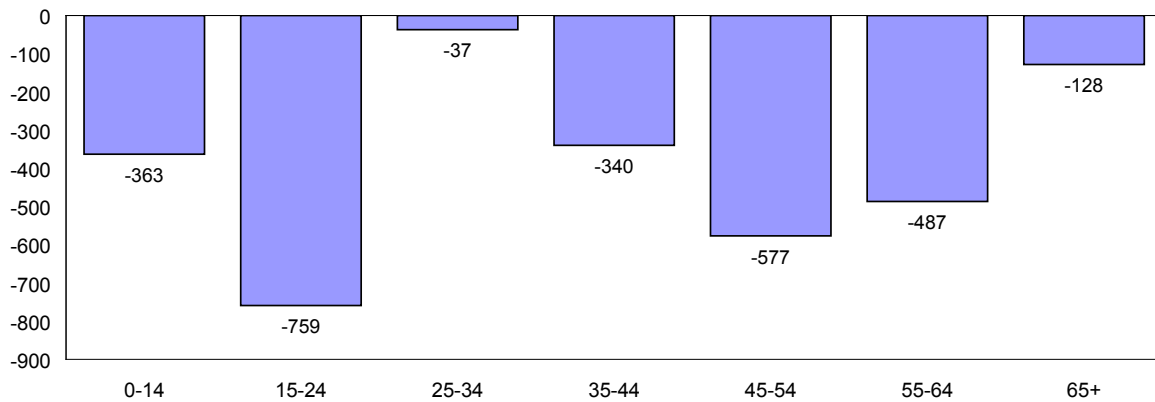
Net migration patterns by quarter are also similar for males and females, although in some quarters net migration for females exceeded net migration for males. From 1996 to 2006, average quarterly net migration was -40 for males and -21 for females.

Net Migration, Females, Yukon, 1996 to 2006



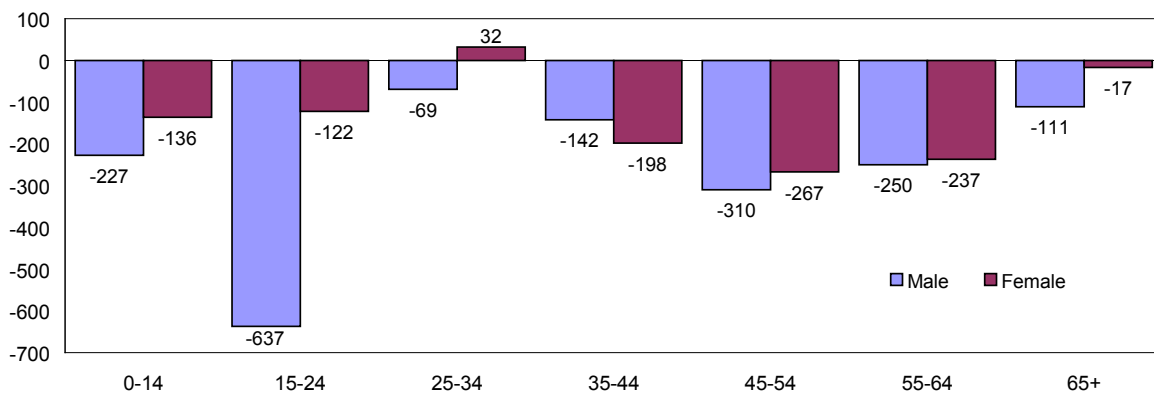
Migration by Age

Net Migration by Age, Yukon, 1996 to 2006



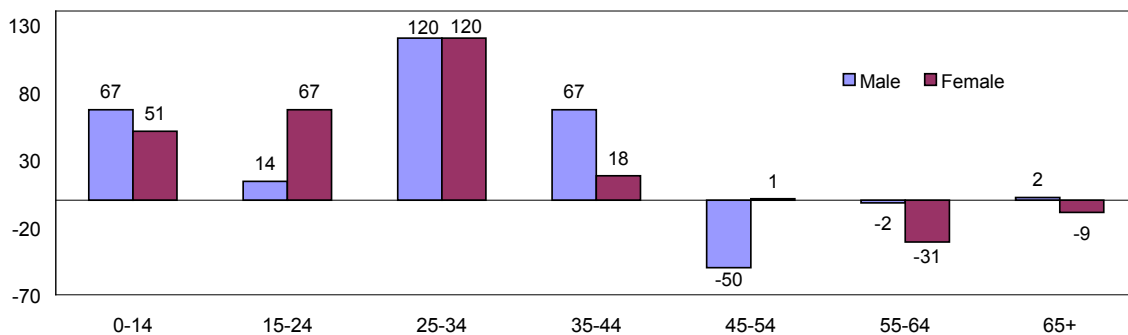
Net migration by age group shows that all age groups decreased between 1996 and 2006. From 1996 to 2006, the age group with the largest decrease in population was the 15–24-year-old age group (-759).

Net Migration by Age and Sex, Yukon, 1996 to 2006



The pattern of net migration by age is similar for males and females, with the exception of the 15–24 group and, to a lesser extent, the 0-14 and the 65+ age groups. With the exception of the 25–34 females, all male and female age groups decreased between 1996 and 2006.

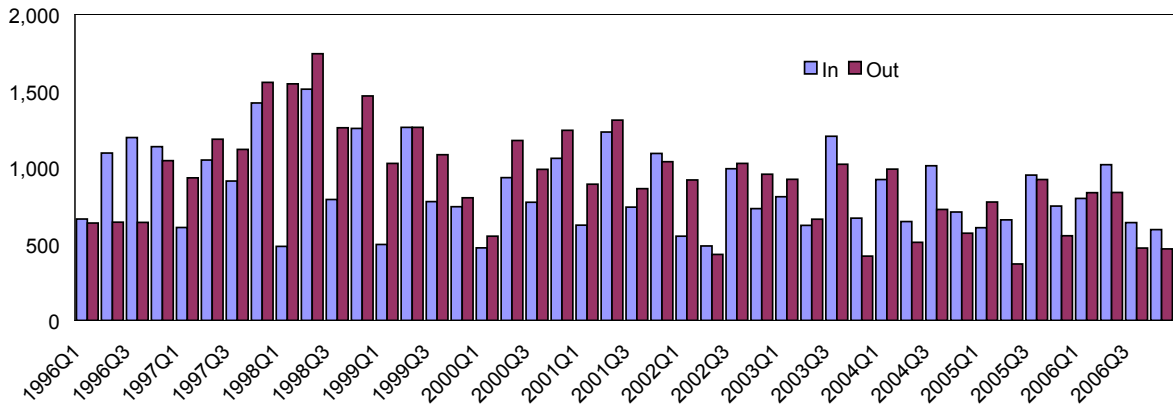
Net Migration by Age and Sex, Yukon, 2006



In 2006, net migration by age was positive for both sexes in the 0–14 through to the 35–44 age groups. The age group with the largest positive net migration (+120) was the 25–34-year-old female and male categories. There were negative net migrations in the 45+ age groups.

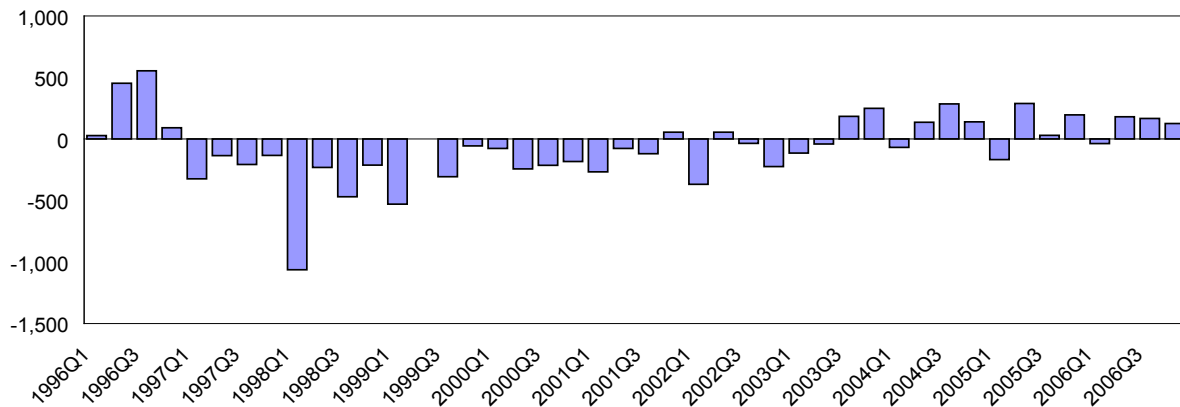
Migration by Quarter

Immigration and Emigration by Quarter, Yukon, 1996 to 2006



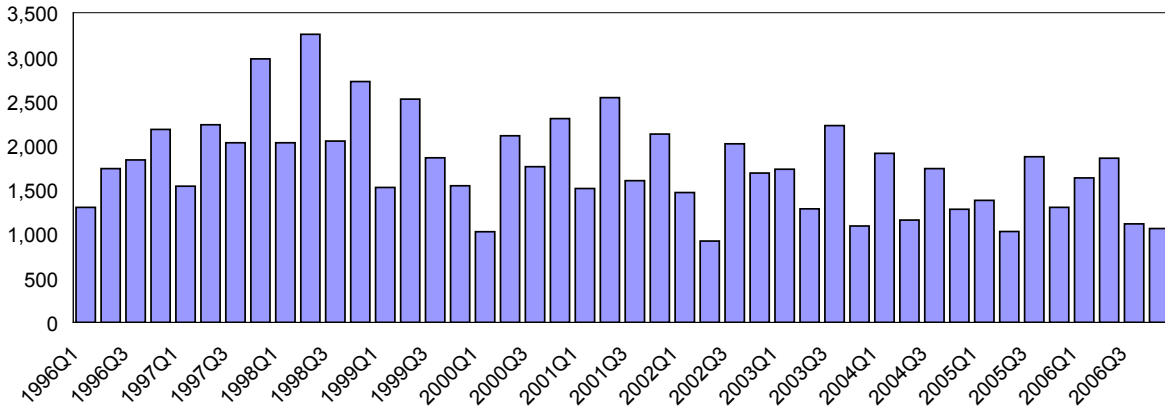
From 1996 to 2006, average quarterly immigration for the Yukon was 857 and average quarterly emigration was 918. In the first quarter of 2006, more people moved out of the Territory than into it. In the final three quarters of 2006, this trend was reversed and more people moved into the Territory than moved out.

Net Migration by Quarter, Yukon, 1996 to 2006



Since 1996, net migration has been positive in 17 quarters and negative or zero in 27 quarters. From 1996 to 2006, average quarterly net migration for the Yukon was -61. Net migration reached a high of 555 in the third quarter of 1996, and a low of -1,063 in the first quarter of 1998.

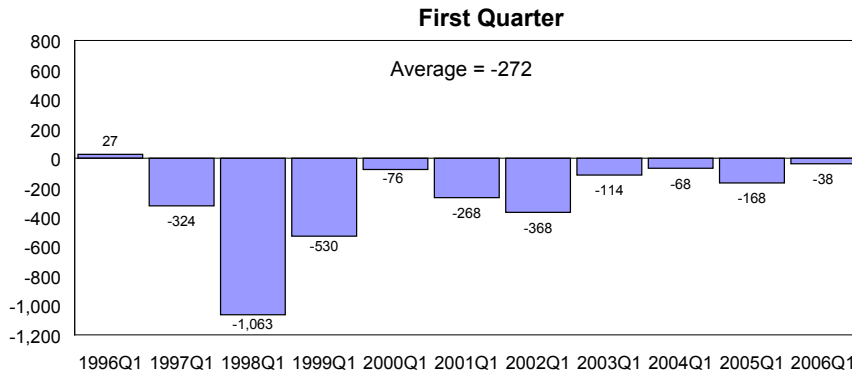
Turnover (Immigration plus Emigration) by Quarter, Yukon, 1996 to 2006



From 1996 to 2006, the average quarterly turnover was 1,774. Turnover reached a high of 3,255 in the second quarter of 1998 and a low of 919 in the second quarter of 2002.

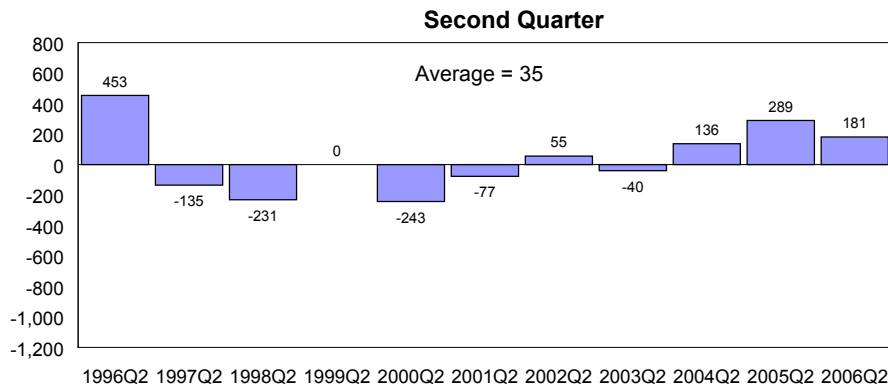
Migration by Quarter cont.

Net Migration by Quarter, Yukon, 1996 to 2006

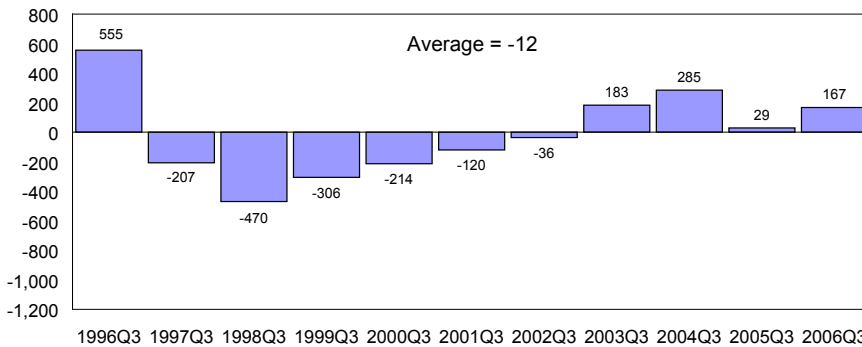


Data from 1996 to 2006 show that average immigration to the Yukon during the first quarter was 639 and average emigration from the Yukon was 911, resulting in an average net migration of -272. This was lower than any other quarter.

Data from 1996 to 2006 show that average immigration to the Yukon during the second quarter was 956 and average emigration from the Yukon was 920, resulting in an average net migration of 35. This third-quarter average net migration was higher than any other quarter.

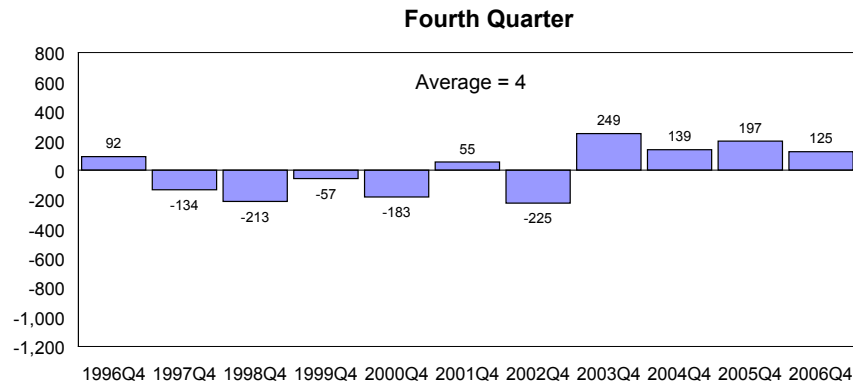


Third Quarter



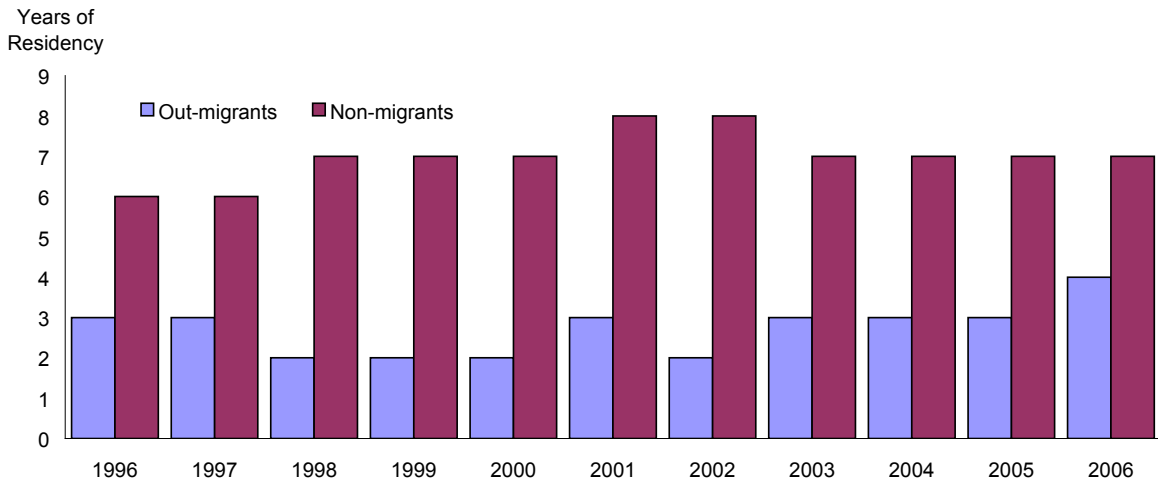
Data from 1996 to 2006 show that average immigration to the Yukon during the third quarter was 908 and average emigration from the Yukon was 920, resulting in an average net migration of -12.

Data from 1996 to 2006 show that average immigration to the Yukon during the fourth quarter was 924 and average emigration from the Yukon was 919, resulting in an average net migration of 4.



Median Length of Residency

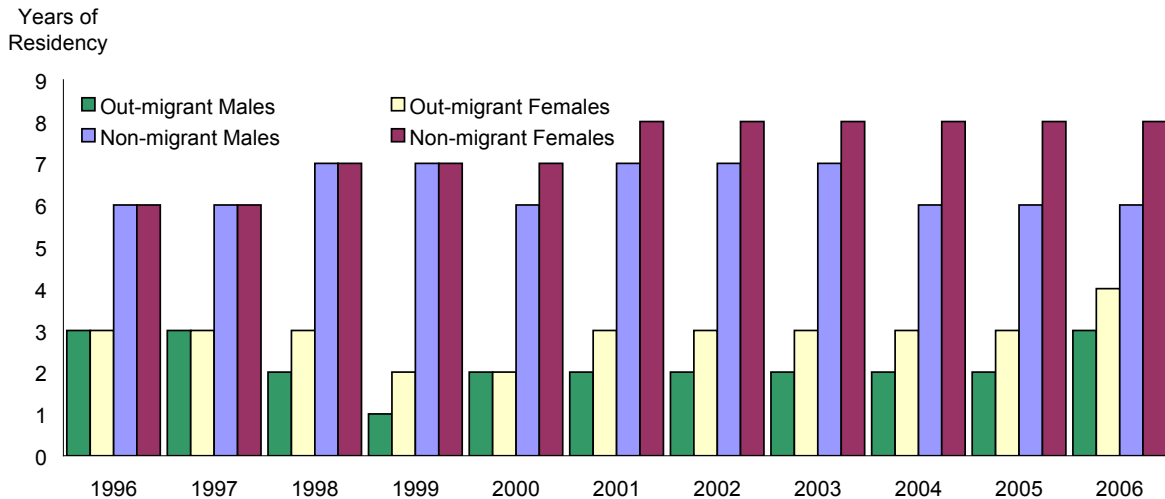
Median Length of Residency (Years), Yukon, 1996 to 2006



In 2006, the median length of residency for out-migrants (those who moved out of the Yukon during the year) was four years. This figure is up by one year since 2005.

In 2006, the median length of residency for non-migrants (those who remained resident in the Yukon during the year) was seven years. This figure has remained constant since 2003. The median length of residency for non-migrants increased steadily from 1996 to 2002. It fell by one year in 2003 from 2002, and subsequently remained steady at seven years to 2006.

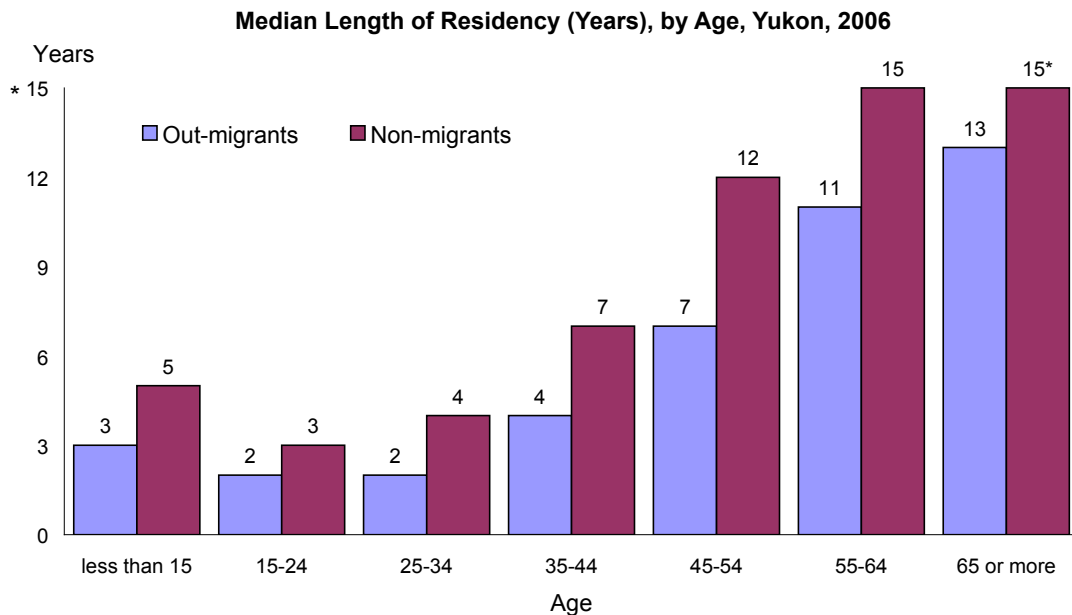
Median Length of Residency (Years), by Sex, Yukon, 1996 to 2006



From 1996 to 2006, the median length of residency for out-migrant males and out-migrant females showed that males were slightly more mobile than females. In 2006, the median length of residency for out-migrant males was three years, and four years for females.

Non-migrant males and non-migrant females also have similar migration patterns. In 2006, the median length of residency for non-migrant males was six years, and eight years for females.

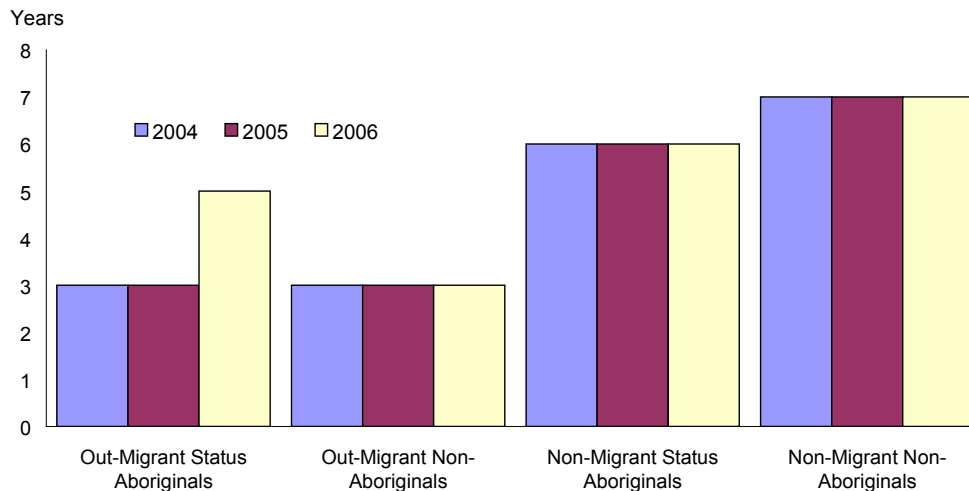
Median Length of Residency cont.



* Refers to median length of residency as 15 or more years. Data after fifteen years is limited by the Yukon Health Care Registration file.

The median length of residency for out-migrants and non-migrants increases with age (with the exception of the 15–24-year-old age group). People in younger age groups are more mobile than people in older age groups. In each age group, out-migrants are more mobile than non-migrants. From 1996 to 2006, the median length of residency for non-migrants over 65 years of age has been 15 or more years.

Median Length of Residency (Years), by Ethnicity, Yukon, 2004 to 2006

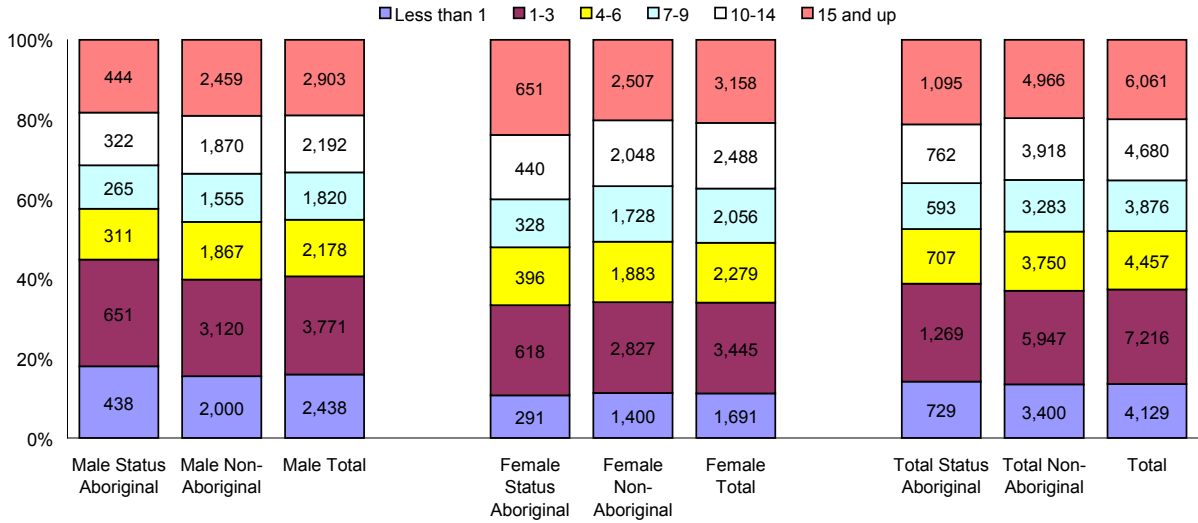


In 2006, the median length of residency for Aboriginal out-migrants and non-Aboriginal out-migrants showed that Aboriginals were less mobile than non-Aboriginal out-migrants. In 2006, the median length of residency for Aboriginal out-migrants was five years and non-Aboriginal out-migrants was three years.

In 2006, the median length of residency for Aboriginal non-migrants was six years, and for non-Aboriginal non-migrants it was seven years.

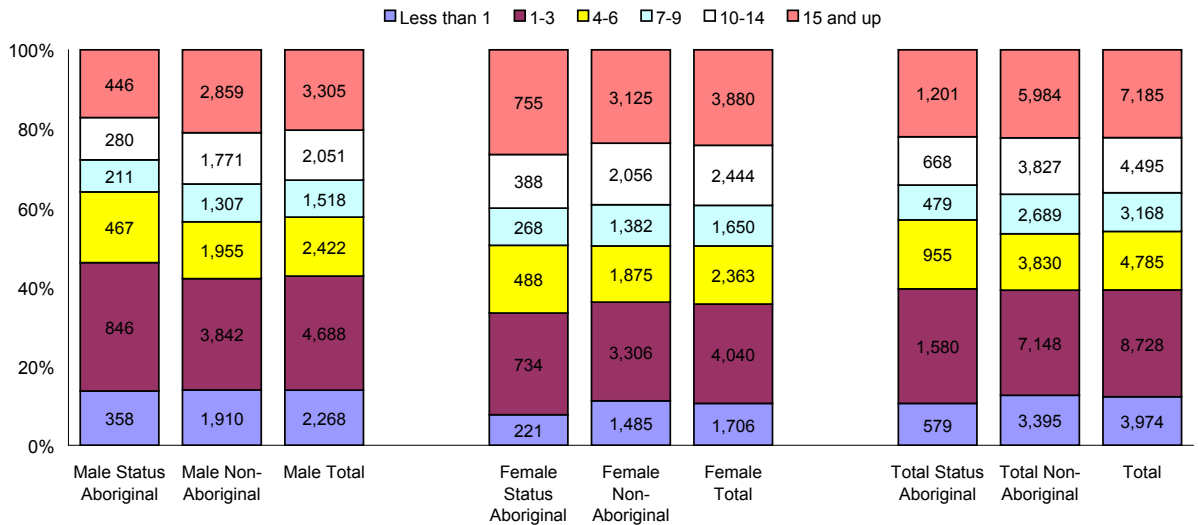
Length of Continuous Residency

Length of Continuous Residency (Years), by Ethnicity and Sex, Yukon, 2001



The 15 years or more group increased by 1,124 people, or 18.5%, when comparing 2001 to 2006. The largest percentage decrease was in the 7-to-9-year residency group, which decreased by 708 people, or 18.3%. Comparing 2001 to 2006, there was a 3.8% decrease in the number of people whose continuous length of residency was less than one year, indicating that fewer people are immigrating to the Yukon. There was also a 21.0% increase in the 1-to-3 year category.

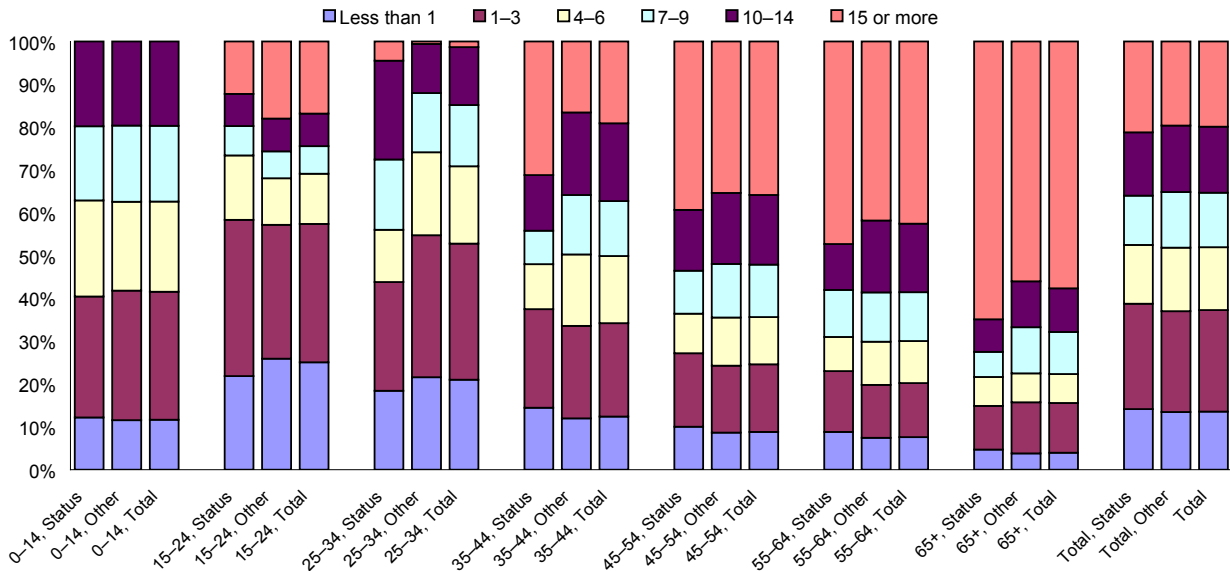
Length of Continuous Residency (Years), by Ethnicity and Sex, Yukon, 2006



There is no significant difference between the percentage of status Aboriginals (22.0%) in residency group '15 or more years' when compared with non-Aboriginal residents (22.3%). There is a larger percentage of females (24.1%) in residency group '15 or more years' when compared with male residents (20.3%). This indicates that females are slightly less mobile than males.

Length of Continuous Residency

Length of Continuous Residency (Years), by Ethnicity and Age, Yukon, 2001

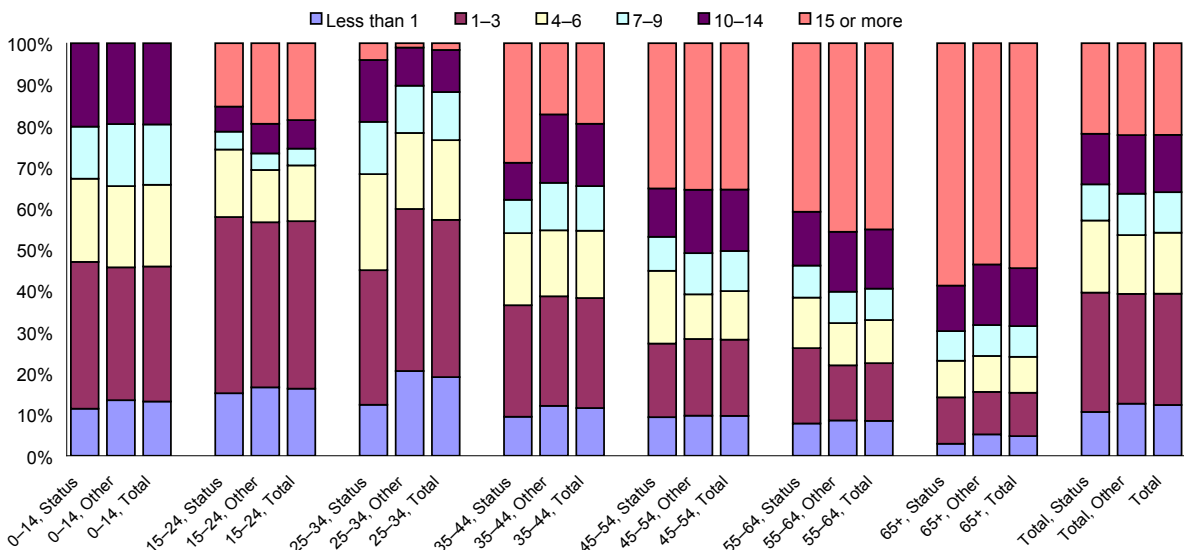


The length of continuous residency for status Aboriginals and non-Aboriginals generally increases with age. People in younger age groups are more mobile than people in older age groups. In 2006, 54.5% of residents 65 and older were continuous residents in the Yukon for 15 years or more.

The most mobile age group in 2006 in the Yukon was the 25-to-34-year-old age group. This group had the lowest percentage (1.6%) of people who have lived in the Yukon continuously for 15 or more years. The 25-to-34-year-old age group also had a high percentage of people who lived in the Yukon for less than one year. Status Aboriginals were less mobile than non-Aboriginals in the 25-to-34- and, to a lesser degree, the same held for the 35-to-44-year-old age groups.

Comparing 2001 to 2006, the percentage of people who have lived in the Yukon continuously for 15 or more years increased in each age group except the 45-to-54- and 65+ age groups.

Length of Continuous Residency (Years), by Ethnicity and Age, Yukon, 2006



Immigration—Tables

Male									Female								
	0-14	15-24	25-34	35-44	45-54	55-64	65+	Total		0-14	15-24	25-34	35-44	45-54	55-64	65+	Total
1997Q1	43	70	99	70	46	9	2	339	1997Q1	54	52	72	48	29	9	5	269
1997Q2	94	97	175	126	87	23	12	614	1997Q2	76	96	125	77	37	12	12	435
1997Q3	123	87	121	104	55	17	8	515	1997Q3	84	85	102	71	37	14	3	396
1997Q4	93	149	234	219	126	58	15	894	1997Q4	88	106	145	95	58	26	10	528
1997	353	403	629	519	314	107	37	2,362	1997	302	339	444	291	161	61	30	1,628
1998Q1	50	44	68	70	27	6	5	270	1998Q1	46	50	54	37	17	6	4	214
1998Q2	62	194	293	217	114	57	30	967	1998Q2	68	140	129	109	54	24	21	545
1998Q3	76	72	85	88	54	16	5	396	1998Q3	77	89	93	78	39	9	9	394
1998Q4	76	176	217	178	101	35	12	795	1998Q4	72	101	127	91	42	20	7	460
1998	264	486	663	553	296	114	52	2,428	1998	263	380	403	315	152	59	41	1,613
1999Q1	31	54	88	58	35	7	2	275	1999Q1	46	44	57	41	23	6	5	222
1999Q2	57	165	235	177	121	48	11	814	1999Q2	67	94	107	85	56	26	13	448
1999Q3	74	63	96	101	62	28	6	430	1999Q3	63	76	92	64	35	12	5	347
1999Q4	73	85	112	77	57	14	9	427	1999Q4	58	63	86	58	38	6	8	317
1999	235	367	531	413	275	97	28	1,946	1999	234	277	342	248	152	50	31	1,334
2000Q1	38	51	82	48	31	13	6	269	2000Q1	38	38	49	36	34	5	5	205
2000Q2	48	113	158	125	68	30	19	561	2000Q2	72	81	76	67	41	18	17	372
2000Q3	65	76	103	92	47	31	14	428	2000Q3	55	77	84	58	48	13	10	345
2000Q4	50	147	168	169	83	40	9	666	2000Q4	58	92	108	75	44	8	9	394
2000	201	387	511	434	229	114	48	1,924	2000	223	288	317	236	167	44	41	1,316
2001Q1	35	74	106	86	44	18	5	368	2001Q1	54	56	64	38	25	13	5	255
2001Q2	34	172	224	208	136	51	13	838	2001Q2	38	96	86	86	56	19	13	394
2001Q3	53	87	112	90	52	31	10	435	2001Q3	54	74	63	61	38	10	6	306
2001Q4	65	152	160	136	84	46	4	647	2001Q4	71	95	122	75	54	18	10	445
2001	187	485	602	520	316	146	32	2,288	2001	217	321	335	260	173	60	34	1,400
2002Q1	45	60	94	76	33	16	2	326	2002Q1	36	44	55	48	30	8	3	224
2002Q2	37	31	83	55	47	26	6	285	2002Q2	32	50	47	30	26	10	7	202
2002Q3	76	109	121	117	67	42	12	544	2002Q3	86	96	96	94	48	17	10	447
2002Q4	61	81	104	97	63	17	14	437	2002Q4	52	60	73	45	45	11	8	294
2002	219	281	402	345	210	101	34	1,592	2002	206	250	271	217	149	46	28	1,167
2003Q1	62	99	127	90	60	36	12	486	2003Q1	53	60	91	62	33	16	7	322
2003Q2	34	66	87	88	59	22	9	365	2003Q2	41	50	76	45	23	14	7	256
2003Q3	96	151	183	142	105	43	8	728	2003Q3	87	97	112	79	58	30	13	476
2003Q4	52	55	66	70	74	29	15	361	2003Q4	51	53	82	49	48	16	9	308
2003	244	371	463	390	298	130	44	1,940	2003	232	260	361	235	162	76	36	1,362
2004Q1	57	125	137	101	72	36	10	538	2004Q1	60	87	100	66	49	11	10	383
2004Q2	43	61	100	62	50	29	11	356	2004Q2	52	47	81	42	37	20	11	290
2004Q3	80	110	124	108	101	44	17	584	2004Q3	79	77	103	74	58	24	12	427
2004Q4	47	75	115	81	70	26	6	420	2004Q4	50	59	68	53	37	13	9	289
2004	227	371	476	352	293	135	44	1,898	2004	241	270	352	235	181	68	42	1,389
2005Q1	29	69	80	78	57	17	6	336	2005Q1	58	64	61	44	28	11	4	270
2005Q2	42	69	96	70	52	30	12	371	2005Q2	38	57	74	58	38	16	6	287
2005Q3	67	98	149	102	83	35	22	556	2005Q3	72	70	98	64	52	20	18	394
2005Q4	59	60	113	78	58	44	11	423	2005Q4	58	58	61	64	46	30	8	325
2005	197	296	438	328	250	126	51	1,686	2005	226	249	294	230	164	77	36	1,276
2006Q1	47	79	116	94	87	47	15	485	2006Q1	49	64	78	52	44	15	10	312
2006Q2	30	106	159	158	109	81	23	666	2006Q2	33	67	80	59	69	30	14	352
2006Q3	51	45	87	52	51	24	12	322	2006Q3	29	60	69	47	64	37	12	318
2006Q4	56	44	70	58	47	26	6	307	2006Q4	50	60	86	32	36	16	6	286
2006	184	274	432	362	294	178	56	1,780	2006	161	251	313	190	213	98	42	1,268

Both Sexes									Both Sexes								
	0-14	15-24	25-34	35-44	45-54	55-64	65+	Total		0-14	15-24	25-34	35-44	45-54	55-64	65+	Total
1997Q1	97	122	171	118	75	18	7	608	2002Q1	81	104	149	124	63	24	5	550
1997Q2	170	193	300	203	124	35	24	1,049	2002Q2	69	81	130	85	73	36	13	487
1997Q3	207	172	223	175	92	31	11	911	2002Q3	162	205	217	211	115	59	22	991
1997Q4	181	255	379	314	184	84	25	1,422	2002Q4	113	141	177	142	108	28	22	731
1997	655	742	1,073	810	475	168	67	3,990	2002	425	531	673	562	359	147	62	2,759
1998Q1	96	94	122	107	44	12	9	484	2003Q1	115	159	218	152	93	52	19	808
1998Q2	130	334	422	326	168	81	51	1,512	2003Q2	75	116	163	133	82	36	16	621
1998Q3	153	161	178	166	93	25	14	790	2003Q3	183	248	295	221	163	73	21	1,204
1998Q4	148	277	344	269	143	55	19	1,255	2003Q4	103	108	148	119	122	45	24	669
1998	527	866	1,066	868	448	173	93	4,041	2003	476	631	824	625	460	206	80	3,302
1999Q1	77	98	145	99	58	13	7	497	2004Q1	117	212	237	167	121	47	20	921
1999Q2	124	259	342	262	177	74	24	1,262	2004Q2	95	108	181	104	87	49	22	646
1999Q3	137	139	188	165	97	40	11	777	2004Q3	159	187	227	182	159	68	29	1,011
1999Q4	131	148	198	135	95	20	17	744	2004Q4	97	134	183	134	107	39	15	709
1999	469	644	873	661	427	147	59	3,280	2004	468	641	828	587	474	203	86	3,287
2000Q1	76	89	131	84	65	18	11	474	2005Q1	87	133	141	122	85	28	10	606
2000Q2	120	194	234	192	109	48	36	933	2005Q2	80	126	170	128	90	46	18	658
2000Q3	120	153	187	150	95	44	24	773	2005Q3	139	168	247	166	135	55	40	950
2000Q4	108	239	276	244	127	48	18	1,060	2005Q4	117	118	174	142	104	74	19	748
2000	424	675	828	670	396	158	89	3,240	2005	423	545	732	558	414	203	87	2,962
2001Q1	89	130	170	124	69	31	10	623	2006Q1	96	143	194	146	131	62	25	797
2001Q2	72	268	310	294	192	70	26	1,232	2006Q2	63	173	239	217	178	111	37	1018
2001Q3	107	161	175	151	90	41	16	741	2006Q3	80	105	156	99	115	61	24	640
2001Q4	136	247	282	211	138	64	14	1,092	2006Q4	106	104	156	90	83	42	12	593
2001	404	806	937														

Emigration—Tables

	Male							Total	Female							Total	
	0-14	15-24	25-34	35-44	45-54	55-64	65+		0-14	15-24	25-34	35-44	45-54	55-64	65+		
1997Q1	85	92	148	107	62	31	14	539	1997Q1	79	74	104	73	34	17	12	393
1997Q2	100	119	165	169	90	53	10	706	1997Q2	89	83	124	91	65	13	13	478
1997Q3	98	108	152	142	95	31	19	645	1997Q3	92	89	128	86	53	26	-1	473
1997Q4	101	195	261	198	108	49	37	949	1997Q4	91	160	133	89	78	28	28	607
1997	384	514	726	616	355	164	80	2,839	1997	351	406	489	339	230	84	52	1,951
1998Q1	114	177	267	191	143	49	30	971	1998Q1	119	107	156	92	63	27	12	576
1998Q2	157	228	250	212	127	61	3	1,038	1998Q2	140	150	186	128	74	27	0	705
1998Q3	90	140	241	161	91	41	13	777	1998Q3	79	96	125	91	42	35	15	483
1998Q4	119	182	224	186	126	51	9	897	1998Q4	104	114	119	115	78	31	10	571
1998	480	727	982	750	487	202	55	3,683	1998	442	467	586	426	257	120	37	2,335
1999Q1	77	102	148	139	84	38	12	600	1999Q1	83	79	98	89	49	22	7	427
1999Q2	52	171	255	171	110	44	18	821	1999Q2	38	116	115	91	51	16	14	441
1999Q3	85	125	195	145	92	41	20	703	1999Q3	72	65	87	69	53	20	14	380
1999Q4	110	71	85	76	45	12	1	400	1999Q4	114	72	85	79	34	17	0	401
1999	324	469	683	531	331	135	51	2,524	1999	307	332	385	328	187	75	35	1,649
2000Q1	64	39	65	53	37	9	7	274	2000Q1	64	40	68	55	38	5	6	276
2000Q2	79	131	169	150	100	46	18	693	2000Q2	77	100	124	96	56	20	10	483
2000Q3	48	149	154	153	73	42	9	628	2000Q3	42	87	92	68	47	15	8	359
2000Q4	63	174	207	159	125	42	17	787	2000Q4	54	110	109	100	53	17	13	456
2000	254	493	595	515	335	139	51	2,382	2000	237	337	393	319	194	57	37	1,574
2001Q1	77	122	120	121	69	30	7	546	2001Q1	54	76	95	57	39	16	8	345
2001Q2	100	196	160	153	82	48	26	765	2001Q2	101	128	121	90	71	23	10	544
2001Q3	68	110	136	113	60	29	7	523	2001Q3	57	75	77	66	45	13	5	338
2001Q4	85	131	163	118	80	25	16	618	2001Q4	74	79	86	90	55	23	12	419
2001	330	559	579	505	291	132	56	2,452	2001	286	358	379	303	210	75	35	1,646
2002Q1	55	134	139	122	67	32	14	563	2002Q1	56	83	87	64	39	15	11	355
2002Q2	23	59	85	35	40	24	9	275	2002Q2	16	36	38	27	22	12	6	157
2002Q3	51	143	146	122	91	56	14	623	2002Q3	66	83	106	53	50	34	12	404
2002Q4	84	106	101	108	69	51	16	535	2002Q4	86	88	78	78	58	23	10	421
2002	213	442	471	387	267	163	53	1,996	2002	224	290	309	222	169	84	39	1,337
2003Q1	52	130	138	125	92	33	8	578	2003Q1	37	80	72	69	49	24	13	344
2003Q2	49	68	83	63	51	44	7	365	2003Q2	57	46	74	53	41	18	7	296
2003Q3	53	162	140	122	90	39	17	623	2003Q3	57	105	93	76	41	17	9	398
2003Q4	45	28	43	32	36	17	9	210	2003Q4	46	29	46	35	33	16	5	210
2003	199	388	404	342	269	133	41	1,776	2003	197	260	285	233	164	75	34	1,248
2004Q1	74	126	134	105	84	35	20	578	2004Q1	69	77	91	79	51	32	12	411
2004Q2	32	55	68	53	44	20	4	276	2004Q2	42	44	62	34	32	15	5	234
2004Q3	46	117	94	73	56	27	10	423	2004Q3	36	93	67	42	39	24	2	303
2004Q4	51	48	53	51	45	26	12	286	2004Q4	56	49	59	51	43	22	4	284
2004	203	346	349	282	229	108	46	1,563	2004	203	263	279	206	165	93	23	1,232
2005Q1	41	97	85	95	74	42	18	452	2005Q1	47	72	67	55	44	23	14	322
2005Q2	22	44	48	27	35	20	5	201	2005Q2	27	38	34	28	21	13	7	168
2005Q3	44	111	116	109	99	51	11	541	2005Q3	45	90	82	70	61	25	7	380
2005Q4	41	57	55	36	49	29	12	279	2005Q4	54	51	48	41	52	15	11	272
2005	148	309	304	267	257	142	46	1,473	2005	173	251	231	194	178	76	39	1,142
2006Q1	30	114	119	119	99	57	16	554	2006Q1	39	56	61	46	47	23	9	281
2006Q2	27	95	92	77	124	72	15	502	2006Q2	26	66	46	46	88	48	15	335
2006Q3	17	15	50	57	74	27	9	249	2006Q3	16	24	43	42	52	33	14	224
2006Q4	43	36	51	42	47	24	14	257	2006Q4	29	38	43	38	25	25	13	211
2006	117	260	312	295	344	180	54	1,562	2006	110	184	193	172	212	129	51	1,051

	Both Sexes							Total	Both Sexes							Total	
	0-14	15-24	25-34	35-44	45-54	55-64	65+		0-14	15-24	25-34	35-44	45-54	55-64	65+		
1997Q1	164	166	252	180	96	48	26	932	2002Q1	111	217	226	186	106	47	25	918
1997Q2	189	202	289	260	155	66	23	1,184	2002Q2	39	95	123	62	62	36	15	432
1997Q3	190	197	280	228	148	57	18	1,118	2002Q3	117	226	252	175	141	90	26	1,027
1997Q4	192	355	394	287	186	77	65	1,556	2002Q4	170	194	179	186	127	74	26	956
1997	735	920	1,215	955	585	248	132	4,790	2002	437	732	780	609	436	247	92	3,333
1998Q1	233	284	423	283	206	76	42	1,547	2003Q1	89	210	210	194	141	57	21	922
1998Q2	297	378	436	340	201	88	3	1,743	2003Q2	106	114	157	116	92	62	14	661
1998Q3	169	236	366	252	133	76	28	1,260	2003Q3	110	267	233	198	131	56	26	1,021
1998Q4	223	296	343	301	204	82	19	1,468	2003Q4	91	57	89	67	69	33	14	420
1998	922	1,194	1,568	1,176	744	322	92	6,018	2003	396	648	689	575	433	208	75	3,024
1999Q1	160	181	246	228	133	60	19	1,027	2004Q1	143	203	225	184	135	67	32	989
1999Q2	90	287	370	262	161	60	32	1,262	2004Q2	74	99	130	87	76	35	9	510
1999Q3	157	190	282	214	145	61	34	1,083	2004Q3	82	210	161	115	95	51	12	726
1999Q4	224	143	170	155	79	29	1	801	2004Q4	107	97	112	102	88	48	16	570
1999	631	801	1,068	859	518	210	86	4,173	2004	406	609	628	488	394	201	69	2,795
2000Q1	128	79	133	108	75	14	13	550	2005Q1	88	169	152	150	118	65	32	774
2000Q2	156	231	293	246	156	66	28	1,176	2005Q2	49	82	82	55	56	33	12	369
2000Q3	90	236	246	221	120	57	17	987	2005Q3	89	201	198	179	160	76	18	921
2000Q4	117	284	316	259	178	59	30	1,243	2005Q4	95	108	103	77	101	44	23	551
2000	491	830	988	834	529	196	88	3,956	2005	321	560	535	461	435	218	85	2,615
2001Q1	131	198	215	178	108	46	15	891	2006Q1	69	170	180	165	146	80	25	835
2001Q2	201	324	281	243	153	71	36	1,309	2006Q2	53	161	138	123	112	120	30	837
2001Q3	125	185	213	179	105	42	12	861	2006Q3	33	39	93	99	216	60	23	473
2001Q4	159	210	249	208	135	48	28	1,037									

Net Migration—Tables

Male								Female									
	0-14	15-24	25-34	35-44	45-54	55-64	65+	Total		0-14	15-24	25-34	35-44	45-54	55-64	65+	Total
1997Q1	-42	-22	-49	-37	-16	-22	-12	-200	1997Q1	-25	-22	-32	-25	-5	-8	-7	-124
1997Q2	-6	-22	10	-43	-3	-30	2	-92	1997Q2	-13	13	1	-14	-28	-1	-1	-43
1997Q3	25	-21	-31	-38	-40	-14	-11	-130	1997Q3	-8	-4	-26	-15	-16	-12	4	-77
1997Q4	-8	-46	-27	21	18	9	-22	-55	1997Q4	-3	-54	12	6	-20	-2	-18	-79
1997	-31	-111	-97	-97	-41	-57	-43	-477	1997	-49	-67	-45	-48	-69	-23	-22	-323
1998Q1	-64	-133	-199	-121	-116	-43	-25	-701	1998Q1	-73	-57	-102	-55	-46	-21	-8	-362
1998Q2	-95	-34	43	5	-13	-4	27	-71	1998Q2	-72	-10	-57	-19	-20	-3	21	-160
1998Q3	-14	-68	-156	-73	-37	-25	-8	-381	1998Q3	-2	-7	-32	-13	-3	-26	-6	-89
1998Q4	-43	-6	-7	-8	-25	-16	3	-102	1998Q4	-32	-13	8	-24	-36	-11	-3	-111
1998	-216	-241	-319	-197	-191	-88	-3	-1,255	1998	-179	-87	-183	-111	-105	-61	4	-722
1999Q1	-46	-48	-60	-81	-49	-31	-10	-325	1999Q1	-37	-35	-41	-48	-26	-16	-2	-205
1999Q2	5	-6	-20	6	11	4	-7	-7	1999Q2	29	-22	-8	-6	5	10	-1	7
1999Q3	-11	-62	-99	-44	-30	-13	-14	-273	1999Q3	-9	11	5	-5	-18	-8	-9	-33
1999Q4	-37	14	27	1	12	2	8	27	1999Q4	-56	-9	1	-21	4	-11	8	-84
1999	-89	-102	-152	-118	-56	-38	-23	-578	1999	-73	-55	-43	-80	-35	-25	-4	-315
2000Q1	-26	12	17	-5	-6	4	-1	-5	2000Q1	-26	-2	-19	-19	-4	0	-1	-71
2000Q2	-31	-18	-11	-25	-32	-16	1	-132	2000Q2	-5	-19	-48	-29	-15	-2	7	-111
2000Q3	17	-73	-51	-61	-26	-11	5	-200	2000Q3	13	-10	-8	-10	1	-2	2	-14
2000Q4	-13	-27	-39	10	-42	-2	-8	-121	2000Q4	4	-18	-1	-25	-9	-9	-4	-62
2000	-53	-106	-84	-81	-106	-25	-3	-458	2000	-14	-49	-76	-83	-27	-13	4	-258
2001Q1	-42	-48	-14	-35	-25	-12	-2	-178	2001Q1	0	-20	-31	-19	-14	-3	-3	-90
2001Q2	-66	-24	64	55	54	3	-13	73	2001Q2	-63	-32	-35	-4	-15	-4	3	-150
2001Q3	-15	-23	-24	-23	-8	2	3	-88	2001Q3	-3	-1	-14	-5	-7	-3	1	-32
2001Q4	-20	21	-3	18	4	21	-12	29	2001Q4	-3	16	36	-15	-1	-5	-2	26
2001	-143	-74	23	15	25	14	-24	-164	2001	-69	-37	-44	-43	-37	-15	-1	-246
2002Q1	-10	-74	-45	-46	-34	-16	-12	-237	2002Q1	-20	-39	-32	-16	-9	-7	-8	-131
2002Q2	14	-28	-2	20	7	2	-3	10	2002Q2	16	14	9	3	4	-2	1	45
2002Q3	25	-34	-25	-5	-24	-14	-2	-79	2002Q3	20	13	-10	41	-2	-17	-2	43
2002Q4	-23	-25	3	-11	-6	-34	-2	-98	2002Q4	-34	-28	-5	-33	-13	-12	-2	-127
2002	6	-161	-69	-42	-57	-62	-19	-404	2002	-18	-40	-38	-5	-20	-38	-11	-170
2003Q1	10	-31	-11	-35	-32	3	4	-92	2003Q1	16	-20	19	-7	-16	-8	-6	-22
2003Q2	-15	-2	4	25	8	-22	2	0	2003Q2	-16	4	2	-8	-18	-4	0	-40
2003Q3	43	-11	43	20	15	4	-9	105	2003Q3	30	-8	19	3	17	13	4	78
2003Q4	7	27	23	38	38	12	6	151	2003Q4	5	24	36	14	15	0	4	98
2003	45	-17	59	48	29	-3	3	164	2003	35	0	76	2	-2	1	2	114
2004Q1	-17	-1	3	-4	-12	1	-10	-40	2004Q1	-9	10	9	-13	-2	-21	-2	-28
2004Q2	11	6	32	9	6	9	7	80	2004Q2	10	3	19	8	5	5	6	56
2004Q3	34	-7	30	35	45	17	7	161	2004Q3	43	-16	36	32	19	0	10	124
2004Q4	-4	27	62	30	25	0	-6	134	2004Q4	-6	10	9	2	-6	-9	5	5
2004	24	25	127	70	64	27	-2	335	2004	38	7	73	29	16	-25	19	157
2005Q1	-12	-28	-5	-17	-17	-25	-12	-116	2005Q1	11	-8	-6	-11	-16	-12	-10	-52
2005Q2	20	25	48	43	17	10	7	170	2005Q2	11	19	40	30	17	3	-1	119
2005Q3	23	-13	33	-7	-16	-16	11	15	2005Q3	27	-20	16	-6	-9	-5	11	14
2005Q4	18	3	58	42	9	15	-1	144	2005Q4	4	7	13	23	-6	15	-3	53
2005	49	-13	134	61	-7	-16	5	213	2005	53	-2	63	36	-14	1	-3	134
2006Q1	17	-35	-3	-25	-12	-10	-1	-69	2006Q1	10	8	17	6	-3	-8	1	31
2006Q2	3	11	67	81	-15	9	8	164	2006Q2	7	1	34	13	-19	-18	-1	17
2006Q3	34	30	37	-5	-23	-3	3	73	2006Q3	13	36	26	5	12	4	-2	94
2006Q4	13	8	19	16	0	2	-8	50	2006Q4	21	22	43	-6	11	-9	-7	75
2006	67	14	120	67	-50	-2	2	218	2006	51	67	120	18	1	-31	-9	217

Both Sexes								Both Sexes									
	0-14	15-24	25-34	35-44	45-54	55-64	65+	Total		0-14	15-24	25-34	35-44	45-54	55-64	65+	Total
1997Q1	-67	-44	-81	-62	-21	-30	-19	-324	2002Q1	-30	-113	-77	-62	-43	-23	-20	-368
1997Q2	-19	-9	11	-57	-31	-31	1	-135	2002Q2	30	-14	7	23	11	0	-2	55
1997Q3	17	-25	-57	-53	-56	-26	-7	-207	2002Q3	45	-21	-35	36	-26	-31	-4	-36
1997Q4	-11	-100	-15	27	-2	7	-40	-134	2002Q4	-57	-53	-2	-44	-19	-46	-4	-225
1997	-80	-178	-142	-145	-110	-80	-65	-800	2002	-12	-201	-107	-47	-77	-100	-30	-574
1998Q1	-137	-190	-301	-176	-162	-64	-33	-1,063	2003Q1	26	-51	8	-42	-48	-5	-2	-114
1998Q2	-167	-44	-14	-14	-33	-7	48	-231	2003Q2	-31	2	6	17	-10	-26	2	-40
1998Q3	-16	-75	-188	-86	-40	-51	-14	-470	2003Q3	73	-19	62	23	32	17	-5	183
1998Q4	-75	-19	1	-32	-61	-27	0	-213	2003Q4	12	51	59	52	53	12	10	249
1998	-395	-328	-502	-308	-296	-149	1	-1,977	2003	80	-17	135	50	27	-2	5	278
1999Q1	-83	-83	-101	-129	-75	-47	-12	-530	2004Q1	-26	9	12	-17	-14	-20	-12	-68
1999Q2	34	-28	-28	0	16	14	-8	0	2004Q2	21	9	51	17	11	14	13	136
1999Q3	-20	-51	-94	-49	-48	-21	-23	-306	2004Q3	77	-23	66	67	64	17	17	285
1999Q4	-93	5	28	-20	16	-9	16	-57	2004Q4	-10	37	71	32	19	-9	-1	139
1999	-162	-157	-195	-198	-91	-63	-27	-893	2004	62	32	200	99	80	2	17	492
2000Q1	-52	10	-2	-24	-10	4	-2	-76	2005Q1	-1	-36	-11	-28	-33	-37	-22	-168
2000Q2	-36	-37	-59	-54	-47	-18	8	-243	2005Q2	31	44	88	73	34	13	6	289
2000Q3	30	-83	-59	-71	-25	-13	7	-214	2005Q3	50	-33	49	-13	-25	-21	22	29
2000Q4	-9	-45	-40	-15	-51	-11	-12	-183	2005Q4	22	10	71	65	3	30	-4	197
2000	-67	-155	-160	-164	-133	-38	1	-716	2005	102	-15	197	97	-21	-15	2	347
2001Q1	-42	-68	-45	-54	-39	-15	-5	-268	2006Q1	27	-27	14	-19	-15	-18	0	-38
2001Q2	-129	-56	29	51	39	-1	-10	-77	2006Q2	10	12	101	94	-34	-9	7	181
2001Q3	-18	-24	-38	-28	-15	-1	4	-120	2006Q3	47	66	63	0	-11	1	1	167
2001Q4	-23	37	33	3	3	16	-14	55	2006Q4	34	30	62	10	11	-7	-15	125
2001	-212	-111	-21	-28	-12	-1	-25	-410	2006	118	81	240	85	-49	-33	-7	435

Turnover—Tables

	Male							Female									
	0-14	15-24	25-34	35-44	45-54	55-64	65+	Total	0-14	15-24	25-34	35-44	45-54	55-64	65+	Total	
1997Q1	128	162	247	177	108	40	16	878	1997Q1	133	126	176	121	63	26	17	662
1997Q2	194	216	340	295	177	76	22	1,320	1997Q2	165	179	249	168	102	25	25	913
1997Q3	221	195	273	246	150	48	27	1,160	1997Q3	176	174	230	157	90	40	2	869
1997Q4	194	344	495	417	234	107	52	1,843	1997Q4	179	266	278	184	136	54	38	1,135
1997	737	917	1,355	1,135	669	271	117	5,201	1997	653	745	933	630	391	145	82	3,579
1998Q1	164	221	335	261	170	55	35	1,241	1998Q1	165	157	210	129	80	33	16	790
1998Q2	219	422	543	429	241	118	33	2,005	1998Q2	208	290	315	237	128	51	21	1,250
1998Q3	166	212	326	249	145	57	18	1,173	1998Q3	156	185	218	169	81	44	24	877
1998Q4	195	358	441	364	227	86	21	1,692	1998Q4	176	215	246	206	120	51	17	1,031
1998	744	1,213	1,645	1,303	783	316	107	6,111	1998	705	847	989	741	409	179	78	3,948
1999Q1	108	156	236	197	119	45	14	875	1999Q1	129	123	155	130	72	28	12	649
1999Q2	109	336	490	348	231	92	29	1,635	1999Q2	105	210	222	176	107	42	27	889
1999Q3	159	188	291	246	154	69	26	1,133	1999Q3	135	141	179	133	88	32	19	727
1999Q4	183	156	197	153	102	26	10	827	1999Q4	172	135	171	137	72	23	8	718
1999	559	836	1,214	944	606	232	79	4,470	1999	541	609	727	576	339	125	66	2,983
2000Q1	102	90	147	101	68	22	13	543	2000Q1	102	78	117	91	72	10	11	481
2000Q2	127	244	327	275	168	76	37	1,254	2000Q2	149	181	200	163	97	38	27	855
2000Q3	113	225	257	245	120	73	23	1,056	2000Q3	97	164	176	126	95	28	18	704
2000Q4	113	321	375	328	208	82	26	1,453	2000Q4	112	202	217	175	97	25	22	850
2000	455	880	1,106	949	564	253	99	4,306	2000	460	625	710	555	361	101	78	2,890
2001Q1	112	196	226	207	113	48	12	914	2001Q1	108	132	159	95	64	29	13	600
2001Q2	134	368	384	361	218	99	39	1,603	2001Q2	139	224	207	176	127	42	23	938
2001Q3	121	197	248	203	112	60	17	958	2001Q3	111	149	140	127	83	23	11	644
2001Q4	150	283	323	254	164	71	20	1,265	2001Q4	145	174	208	165	109	41	22	864
2001	517	1,044	1,181	1,025	607	278	88	4,740	2001	503	679	714	563	383	135	69	3,046
2002Q1	100	194	233	198	100	48	16	889	2002Q1	92	127	142	112	69	23	14	579
2002Q2	60	90	168	90	87	50	15	560	2002Q2	48	86	85	57	48	22	13	359
2002Q3	127	252	267	239	158	98	26	1,167	2002Q3	152	179	202	147	98	51	22	851
2002Q4	145	187	205	205	132	68	30	972	2002Q4	138	148	151	123	103	34	18	715
2002	432	723	873	732	477	264	87	3,588	2002	430	540	580	439	318	130	67	2,504
2003Q1	114	229	265	215	152	69	20	1,064	2003Q1	90	140	163	131	82	40	20	666
2003Q2	83	134	170	151	110	66	16	730	2003Q2	98	96	150	98	64	32	14	552
2003Q3	149	313	323	264	195	82	25	1,351	2003Q3	144	202	205	155	99	47	22	874
2003Q4	97	83	109	102	110	46	24	571	2003Q4	97	82	128	84	81	32	14	518
2003	443	759	867	732	567	263	85	3,716	2003	429	520	646	468	326	151	70	2,610
2004Q1	131	251	271	206	156	71	30	1,116	2004Q1	129	164	191	145	100	43	22	794
2004Q2	75	116	168	115	94	49	15	632	2004Q2	94	91	143	76	69	35	16	524
2004Q3	126	227	218	181	157	71	27	1,007	2004Q3	115	170	170	116	97	48	14	730
2004Q4	98	123	168	132	115	52	18	706	2004Q4	106	108	127	104	80	35	13	573
2004	430	717	825	634	522	243	90	3,461	2004	444	533	631	441	346	161	65	2,621
2005Q1	70	166	165	173	131	59	24	788	2005Q1	105	136	128	99	72	34	18	592
2005Q2	64	113	144	97	87	50	17	572	2005Q2	65	95	108	86	59	29	13	455
2005Q3	111	209	265	211	182	86	33	1,097	2005Q3	117	160	180	134	113	45	25	774
2005Q4	100	117	168	114	107	73	23	702	2005Q4	112	109	109	105	98	45	19	597
2005	345	605	742	595	507	268	97	3,159	2005	399	500	525	424	342	153	75	2,418
2006Q1	77	193	235	213	186	104	31	1,039	2006Q1	88	120	139	98	91	38	19	593
2006Q2	57	201	251	235	233	153	38	1,168	2006Q2	59	133	126	105	157	78	29	687
2006Q3	68	60	137	109	125	51	21	571	2006Q3	45	84	112	89	116	70	26	542
2006Q4	99	80	121	100	94	50	20	564	2006Q4	79	98	129	70	61	41	19	497
2006	301	534	744	657	638	358	110	3,342	2006	271	435	506	362	425	227	93	2,319

	Both Sexes							Both Sexes									
	0-14	15-24	25-34	35-44	45-54	55-64	65+	Total	0-14	15-24	25-34	35-44	45-54	55-64	65+	Total	
1997Q1	261	288	423	298	171	66	33	1,540	2002Q1	192	321	375	310	169	71	30	1,468
1997Q2	359	395	589	463	279	101	47	2,233	2002Q2	108	176	253	147	135	72	28	919
1997Q3	397	369	503	403	240	88	29	2,029	2002Q3	279	431	469	386	256	149	48	2,018
1997Q4	373	610	773	601	370	161	90	2,978	2002Q4	283	335	356	328	235	102	48	1,687
1997	1,390	1,662	2,288	1,765	1,060	416	199	8,780	2002	862	1,263	1,453	1,171	795	394	154	6,092
1998Q1	329	378	545	390	250	88	51	2,031	2003Q1	204	369	428	346	234	109	40	1,730
1998Q2	427	712	858	666	369	169	54	3,255	2003Q2	181	230	320	249	174	98	30	1,282
1998Q3	322	397	544	418	226	101	42	2,050	2003Q3	293	515	528	419	294	129	47	2,225
1998Q4	371	573	687	570	347	137	38	2,723	2003Q4	194	165	237	186	191	78	38	1,089
1998	1,449	2,060	2,634	2,044	1,192	495	185	10,059	2003	872	1,279	1,513	1,200	893	414	155	6,326
1999Q1	237	279	391	327	191	73	26	1,524	2004Q1	260	415	462	351	256	114	52	1,910
1999Q2	214	546	712	524	338	134	56	2,524	2004Q2	169	207	311	191	163	84	31	1,156
1999Q3	294	329	470	379	242	101	45	1,860	2004Q3	241	397	388	297	254	119	41	1,737
1999Q4	355	291	368	290	174	49	18	1,545	2004Q4	204	231	295	236	195	87	31	1,279
1999	1,100	1,445	1,941	1,520	945	357	145	7,453	2004	874	1,250	1,456	1,075	868	404	155	6,082
2000Q1	204	168	264	192	140	32	24	1,024	2005Q1	175	302	293	272	203	93	42	1,380
2000Q2	276	425	527	438	265	114	64	2,109	2005Q2	129	208	252	183	146	79	30	1,027
2000Q3	210	389	433	371	215	101	41	1,760	2005Q3	228	369	445	345	295	131	58	1,871
2000Q4	225	523	592	503	305	107	48	2,303	2005Q4	212	226	277	219	205	118	42	1,299
2000	915	1,505	1,816	1,504	925	354	177	7,196	2005	744	1,105	1,267	1,019	849	421	172	5,577
2001Q1	220	328	385	302	177	77	25	1,514	2006Q1								

Median Length of Residency —Tables

	2000	2001	2002	2003	2004	2005	2006
	-----Number of Years-----						
Out-Migrants	2	3	2	3	3	3	4
Non-Migrants	7	8	8	7	7	7	7
Out-Migrant Males	1	2	2	2	2	2	3
Out-Migrant Females	2	2	3	3	3	3	4
Non-Migrant Males	7	6	7	7	6	6	6
Non-Migrant Females	7	7	8	8	8	8	8
Out-Migrant less than 15	2	3	3	3	3	3	3
Out-Migrant 15–24	1	1	1	2	2	2	2
Out-Migrant 25–34	2	2	2	2	2	2	2
Out-Migrant 35–44	3	3	3	3	3	3	4
Out-Migrant 45–54	3	4	3	4	4	4	7
Out-Migrant 55–64	7	6	6	6	4	5	11
Out-Migrant 65 or more	13	12	13	13	15	14	13
Non-Migrant less than 15	5	6	6	6	5	5	5
Non-Migrant 15–24	3	4	4	3	3	2	3
Non-Migrant 25–34	4	5	5	4	4	4	4
Non-Migrant 35–44	7	9	8	8	8	8	7
Non-Migrant 45–54	10	11	12	12	12	12	12
Non-Migrant 55–64	12	13	14	14	14	14	15
Non-Migrant 65 or more	15	15	15	15	15	15	15
Out-Migrant Status Aboriginals	3	3	2	3	3	3	5
Out-Migrant Non-Aboriginals	2	3	2	3	3	3	3
Non-Migrant Status Aboriginals	7	8	8	7	6	6	6
Non-Migrant Non-Aboriginals	7	8	8	7	7	7	7

Notes: '15' refers to median length of residency as **fifteen or more** years. Data after fifteen years are limited by the Yukon Health Care registration file.

These data were generated by comparing January 1st populations in successive years. Anyone who is in both datasets is considered a non-migrant. Anyone who moved out and moved back in within a single calendar year is counted as a non-migrant. Those who were in the population dataset on January 1st of a given year and not in the dataset on the following January 1st are counted as out-migrants.

'Median length of residency' refers to the value at which one-half of the residency lengths are higher and one-half are lower. This middle point is a better indicator of length of residency than an 'average' length would be.

Length of Continuous Residency—Tables

		2001							2006								
		Number of Years							Number of Years								
		Less than 1	1-3	4-6	7-9	10-14	15 or more	Total	Less than 1	1-3	4-6	7-9	10-14	15 or more	Total		
Status Aboriginal	0-14	147	341	271	209	239	0	1,207	Status Aboriginal	0-14	113	352	200	125	200	0	990
Non-Aboriginal	0-14	579	1,515	1,039	890	983	0	5,006	Non-Aboriginal	0-14	651	1,554	951	725	946	0	4,827
Total	0-14	726	1,856	1,310	1,099	1,222	0	6,213	Total	0-14	764	1,906	1,151	850	1,146	0	5,817
Status Aboriginal	15-24	186	310	128	58	64	104	850	Status Aboriginal	15-24	152	428	164	43	61	154	1,002
Non-Aboriginal	15-24	853	1,028	358	208	251	593	3,291	Non-Aboriginal	15-24	605	1,459	463	146	262	712	3,647
Total	15-24	1,039	1,338	486	266	315	697	4,141	Total	15-24	757	1,887	627	189	323	866	4,649
Status Aboriginal	25-34	139	192	92	124	174	34	755	Status Aboriginal	25-34	94	248	177	96	114	31	760
Non-Aboriginal	25-34	736	1,132	660	473	390	20	3,411	Non-Aboriginal	25-34	723	1,384	649	403	324	38	3,521
Total	25-34	875	1,324	752	597	564	54	4,166	Total	25-34	817	1,632	826	499	438	69	4,281
Status Aboriginal	35-44	146	232	106	79	131	315	1,009	Status Aboriginal	35-44	96	275	178	82	91	295	1,017
Non-Aboriginal	35-44	579	1,044	808	671	932	802	4,836	Non-Aboriginal	35-44	506	1,111	669	481	694	722	4,183
Total	35-44	725	1,276	914	750	1,063	1,117	5,845	Total	35-44	602	1,386	847	563	785	1,017	5,200
Status Aboriginal	45-54	62	106	57	62	88	243	618	Status Aboriginal	45-54	75	143	141	66	94	282	801
Non-Aboriginal	45-54	418	751	541	603	797	1,704	4,814	Non-Aboriginal	45-54	511	973	570	522	808	1,864	5,248
Total	45-54	480	857	598	665	885	1,947	5,432	Total	45-54	586	1,116	711	588	902	2,146	6,049
Status Aboriginal	55-64	33	53	30	41	40	177	374	Status Aboriginal	55-64	37	87	58	37	62	194	475
Non-Aboriginal	55-64	178	297	242	276	403	1,003	2,399	Non-Aboriginal	55-64	297	463	356	263	503	1,587	3,469
Total	55-64	211	350	272	317	443	1,180	2,773	Total	55-64	334	550	414	300	565	1,781	3,944
Status Aboriginal	65+	16	35	23	20	26	222	342	Status Aboriginal	65+	12	47	37	30	46	245	417
Non-Aboriginal	65+	57	180	102	162	162	844	1,507	Non-Aboriginal	65+	102	204	172	149	290	1,061	1,978
Total	65+	73	215	125	182	188	1,066	1,849	Total	65+	114	251	209	179	336	1,306	2,395
Status Aboriginal	Male	438	651	311	265	322	444	2,431	Status Aboriginal	Male	358	846	467	211	280	446	2,608
Non-Aboriginal	Male	2,000	3,120	1,867	1,555	1,870	2,459	12,871	Non-Aboriginal	Male	1,910	3,842	1,955	1,307	1,771	2,859	13,644
Total	Male	2,438	3,771	2,178	1,820	2,192	2,903	15,302	Total	Male	2,268	4,688	2,422	1,518	2,051	3,305	16,252
Status Aboriginal	Female	291	618	396	328	440	651	2,724	Status Aboriginal	Female	221	734	488	268	388	755	2,854
Non-Aboriginal	Female	1,400	2,827	1,883	1,728	2,048	2,507	12,393	Non-Aboriginal	Female	1,485	3,306	1,875	1,382	2,056	3,125	13,229
Total	Female	1,691	3,445	2,279	2,056	2,488	3,158	15,117	Total	Female	1,706	4,040	2,363	1,650	2,444	3,880	16,083
Status Aboriginal	Total	729	1,269	707	593	762	1,095	5,155	Status Aboriginal	Total	579	1,580	955	479	668	1,201	5,462
Non-Aboriginal	Total	3,400	5,947	3,750	3,283	3,918	4,966	25,264	Non-Aboriginal	Total	3,395	7,148	3,830	2,689	3,827	5,984	26,873
Total	Total	4,129	7,216	4,457	3,876	4,680	6,061	30,419	Total	Total	3,974	8,728	4,785	3,168	4,495	7,185	32,335

Information sheet no. 77.07—February '08

Additional information:

The Yukon Government

Executive Council Office

Bureau of Statistics (A-8C)

Box 2703, Whitehorse, Yukon Y1A 2C6

Telephone: (867) 667-5640; Fax: (867) 393-6203

email: ybsinfo@gov.yk.ca

website: www.eco.gov.yk.ca/stats/