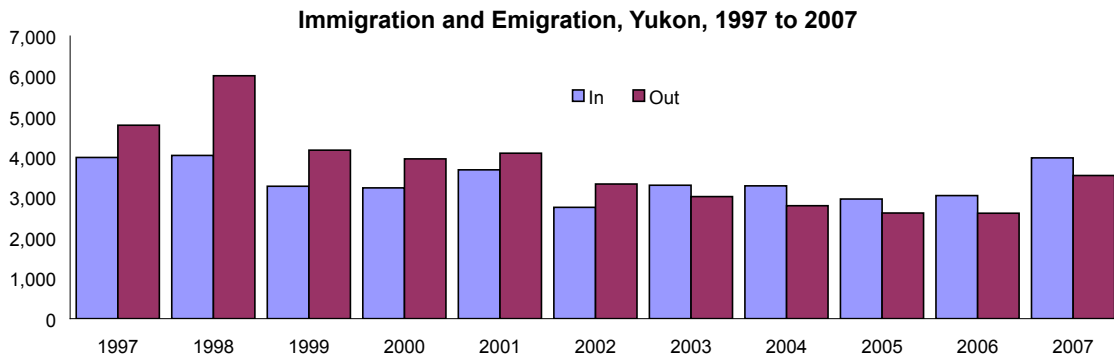


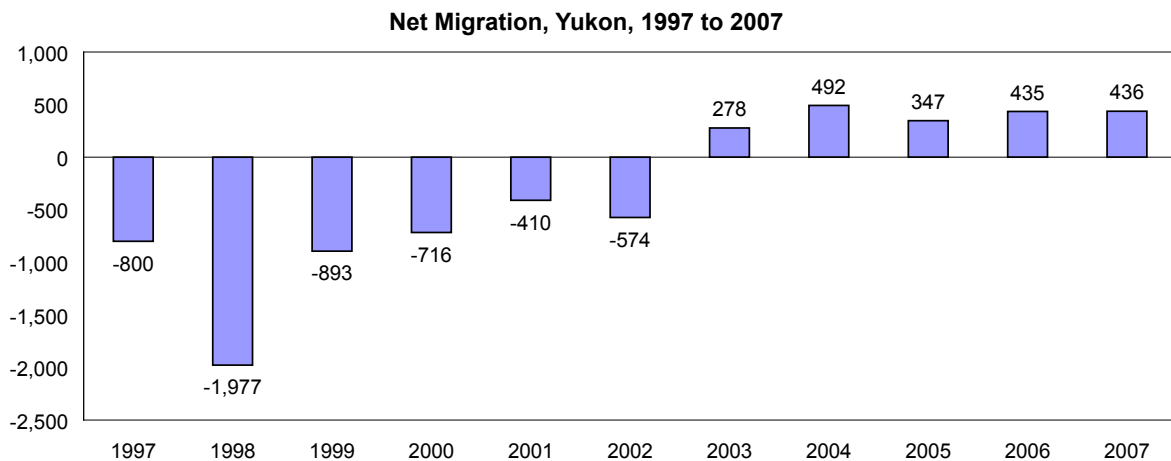
Yukon Migration Patterns 1997–2007

Highlights

This report examines migration patterns in the Yukon and is divided into three sections. The first section looks at immigration and emigration for the Yukon from 1997 to 2007. It examines both quarterly and yearly migration patterns by gender and age. The second section looks at the median length of residency in the Yukon for out-migrants (those who have moved out of the Yukon during the year and not returned) and non-migrants (those who remained resident in the Yukon during the year) by gender, age and ethnicity. The third section compares continuous length of residency in the Yukon in 2007 with 2002, also by gender, age and ethnicity. All of the migration numbers used in this report are based statistically on the Yukon Bureau of Statistics' population data (which are based on the Yukon Health Care registration file).

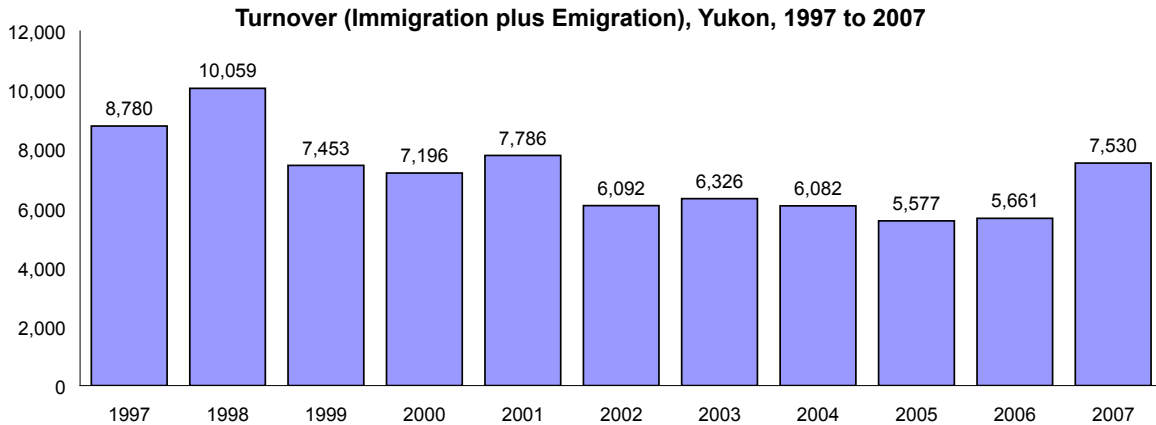


In total, from 1997 to 2007, more people have moved out of the Territory than have moved into the Territory, with losses exceeding gains for six consecutive years (1997 to 2002). Subsequently, immigration exceeded emigration from 2003 through 2007. In 2007, 3,547 people emigrated from the Yukon, while 3,983 people immigrated to the Yukon.

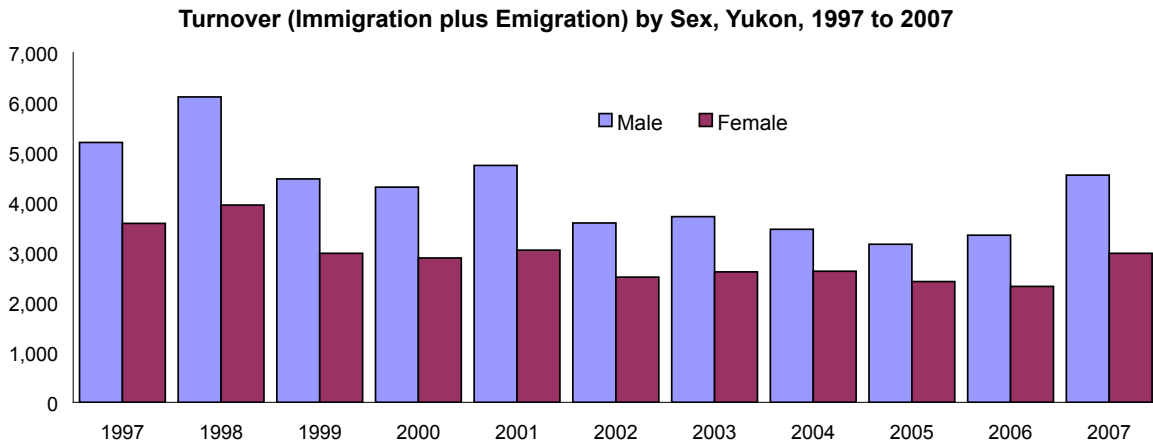


Net migration is the difference between the number of people entering the Yukon (immigration) and the number of people leaving the Yukon (emigration). From 1997 to 2007, average annual net migration for the Yukon was -307. Since 1997, the Yukon has experienced six years of population decline followed by five years of population growth. The largest increase in the Yukon population migration occurred in 2004 when net migration equalled 492, and the largest decrease was in 1998 when net migration was -1,977.

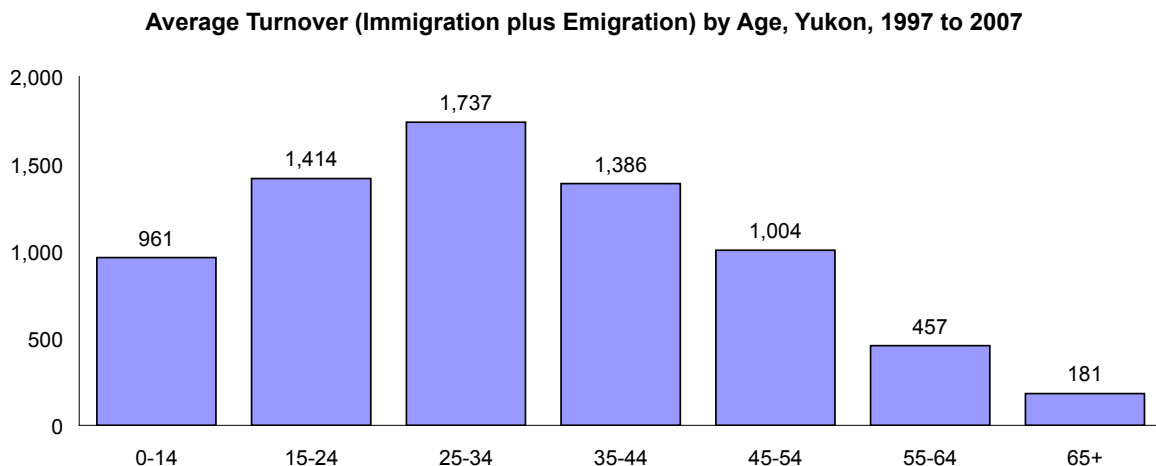
Yearly Turnover



From 1997 to 2007, the average annual turnover (immigration plus emigration) for the Yukon was 7,140. Turnover shows the segment of the population that is mobile and affects things such as the housing market, rental prices and vacancy rates.



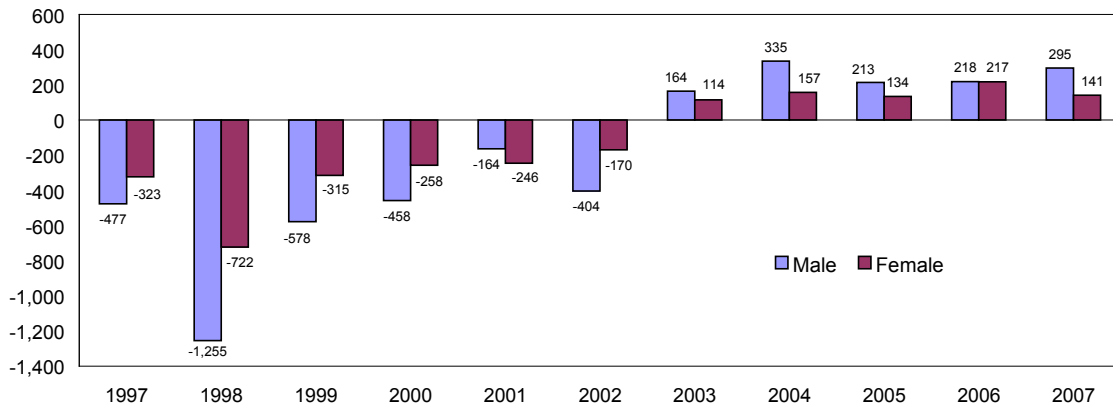
Since 1997, more men than women moved into or out of the Territory, indicating that in the Yukon men are more mobile than women. From 1997 to 2007, the average annual turnover was 4,240 for men and 2,900 for women.



People in younger age groups are also more mobile. Average annual turnover from 1997 to 2007 shows that fewer people in age groups 55–64 and 65+ were moving into or out of the Territory. The age group with the highest average annual turnover was the 25–34 year-old age group (1,737).

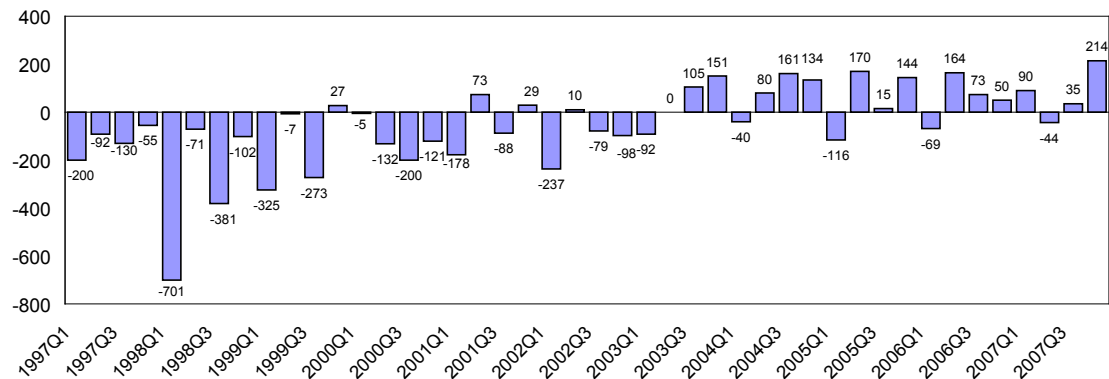
Migration by Sex

Net Migration by Sex, Yukon, 1997 to 2007



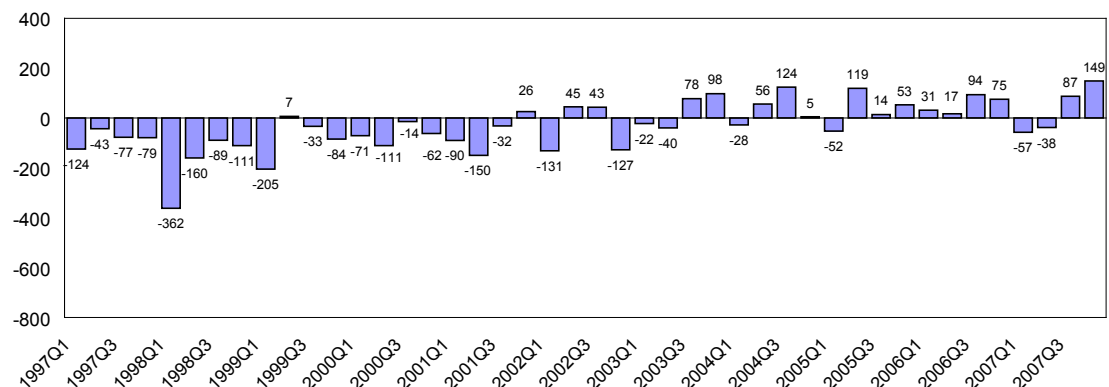
The pattern of net migration is similar for males and females, although males are more mobile, exceeding females in migration in each year except 2001. From 1997 to 2007, average annual net migration was -192 for males and -116 for females. In 2007, net migration for both males and females was positive, following a trend that started in 2003.

Net Migration, Males, Yukon, 1997 to 2007



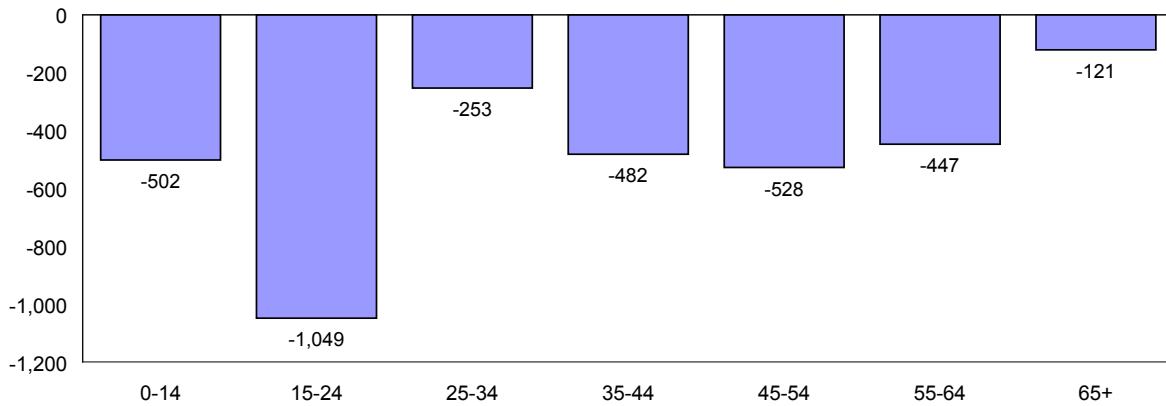
Net migration patterns by quarter are also similar for males and females, although in some quarters net migration for females exceeded net migration for males. From 1997 to 2007, average **quarterly** net migration was -48 for males and -29 for females.

Net Migration, Females, Yukon, 1997 to 2007



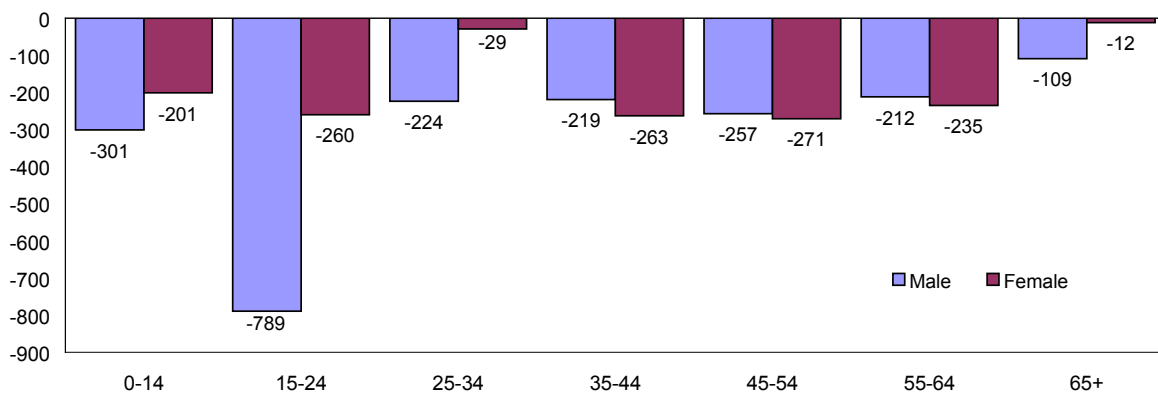
Migration by Age

Net Migration by Age, Yukon, 1997 to 2007



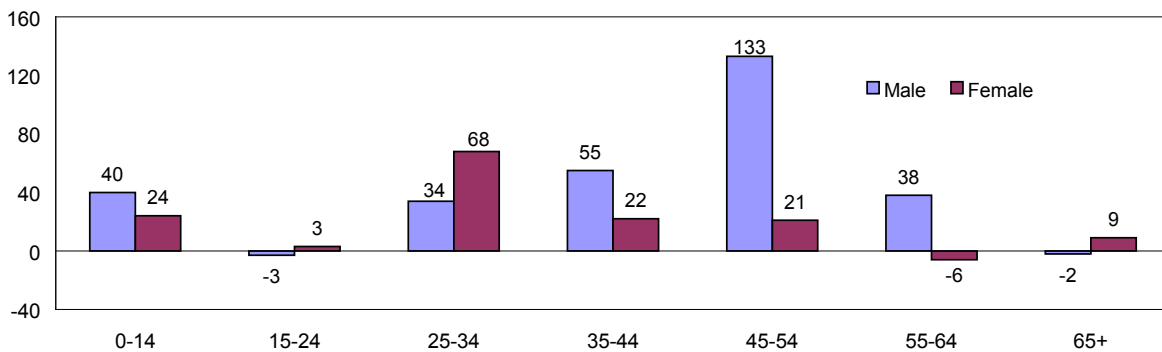
Net migration by age group shows that all age groups decreased between 1997 and 2007. From 1997 to 2007, the age group with the largest decrease in terms of net migration was the 15–24-year-old age group (-1,049).

Net Migration by Age and Sex, Yukon, 1997 to 2007



All male and female age groups showed a net loss in terms of net migration between 1997 and 2007. The pattern of net migration by age shows that the Yukon lost more males than females in the youngest and oldest age groups between 1997 and 2007. The reverse was true for the age groups between 35 and 64.

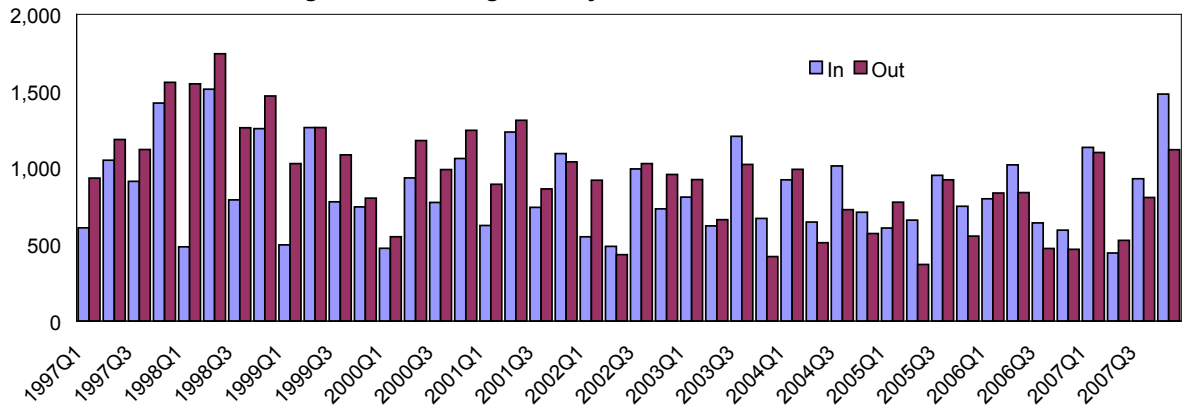
Net Migration by Age and Sex, Yukon, 2007



In 2007, net migration by age was positive for both sexes in all age groups, with the exception of 15-24 and 65+ males, and 55-64 females. The age group with the largest positive net migration was the 45–54-year-old category, with 133 males and 21 females.

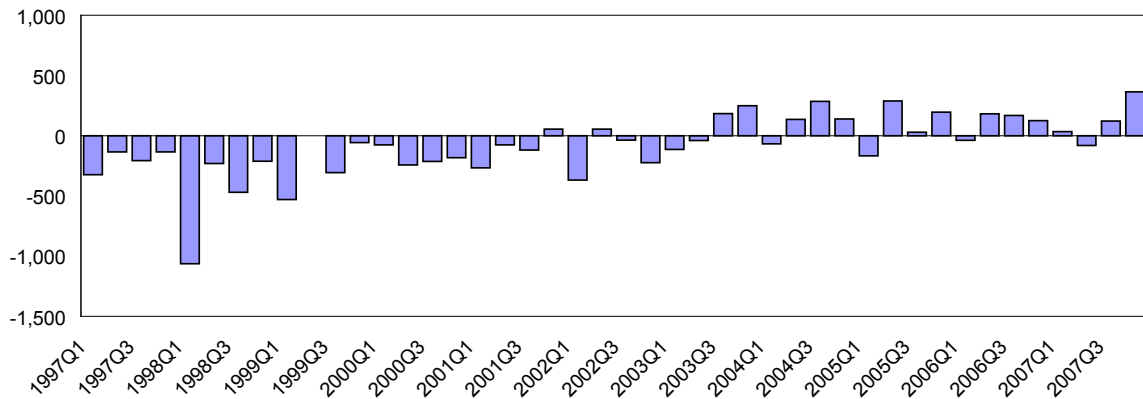
Migration by Quarter

Immigration and Emigration by Quarter, Yukon, 1997 to 2007



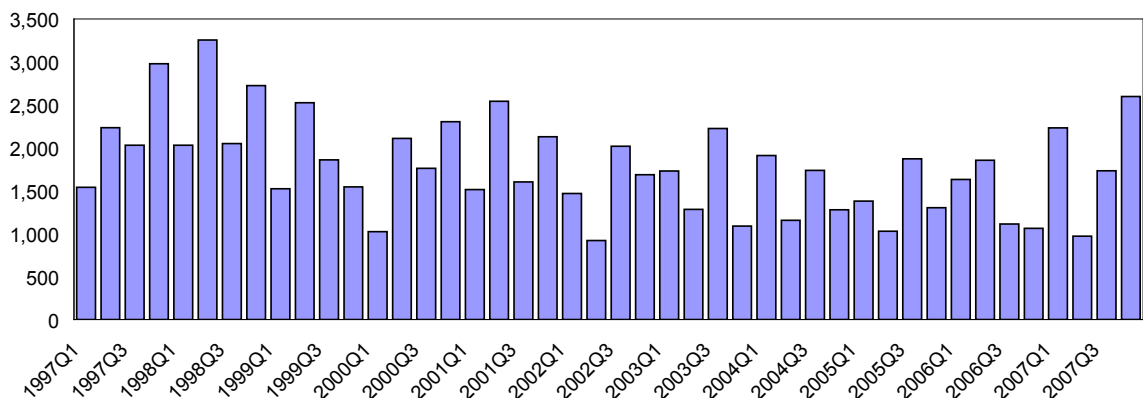
From 1997 to 2007, average quarterly immigration for the Yukon was 857 and average quarterly emigration was 918. In the second quarter of 2007, more people moved out of the Territory than into it. In the other three quarters of 2007, this trend was reversed and more people moved into the Territory than moved out.

Net Migration by Quarter, Yukon, 1997 to 2007



Since 1997, net migration has been positive in 16 quarters and negative or zero in 28 quarters. From 1997 to 2007, average quarterly net migration for the Yukon was -77. Net migration reached a high of 363 in the fourth quarter of 2007, and a low of -1,063 in the first quarter of 1998.

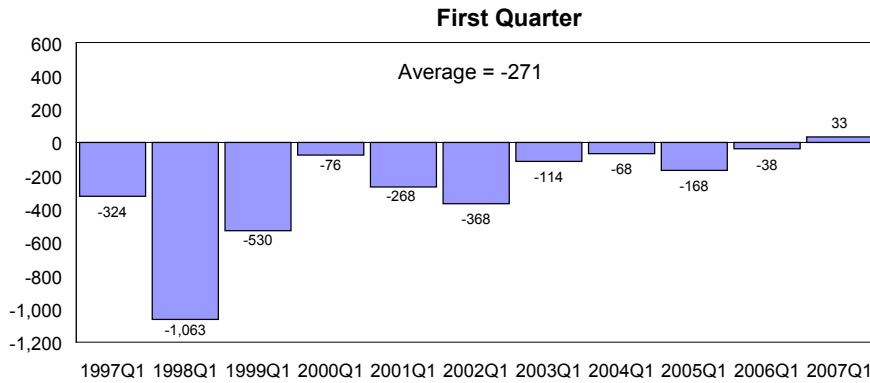
Turnover (Immigration plus Emigration) by Quarter, Yukon, 1997 to 2007



From 1997 to 2007, the average quarterly turnover was 1,785. Turnover reached a high of 3,255 in the second quarter of 1998 and a low of 919 in the second quarter of 2002.

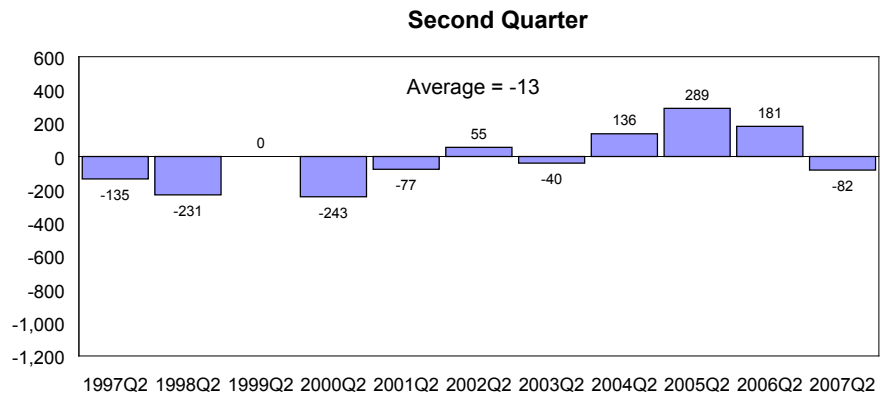
Migration by Quarter cont.

Net Migration by Quarter, Yukon, 1997 to 2007

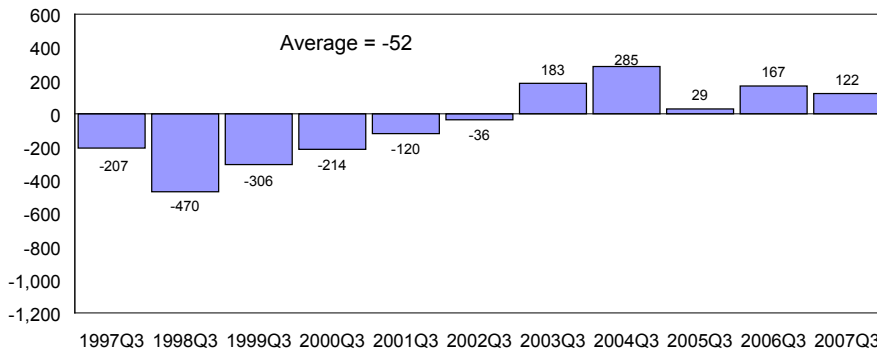


Data from 1997 to 2007 show that average immigration to the Yukon during the first quarter was 682 and average emigration from the Yukon was 953, resulting in an average net migration of -271. This was lower than any other quarter.

Data from 1997 to 2007 show that average immigration to the Yukon during the second quarter was 897 and average emigration from the Yukon was 910, resulting in an average net migration of -13.



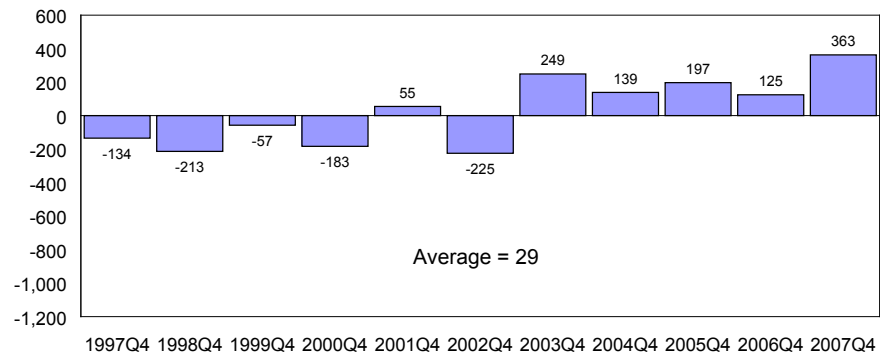
Third Quarter



Data from 1997 to 2007 show that average immigration to the Yukon during the third quarter was 883 and average emigration from the Yukon was 935, resulting in an average net migration of -52.

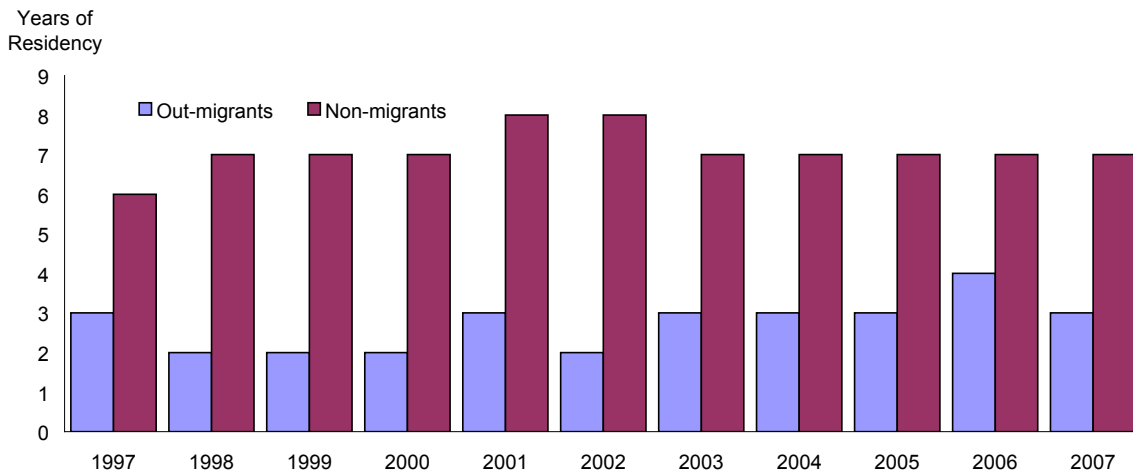
Data from 1997 to 2007 show that average immigration to the Yukon during the fourth quarter was 955 and average emigration from the Yukon was 926, resulting in an average net migration of 29. The fourth quarter was the only quarter with an positive average net migration over this period.

Fourth Quarter



Median Length of Residency

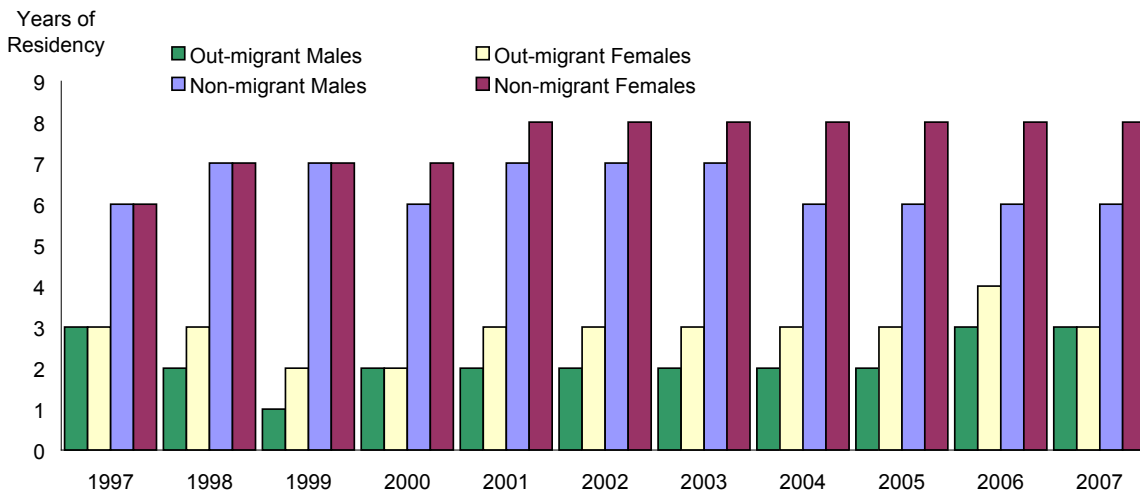
Median Length of Residency (Years), Yukon, 1997 to 2007



In 2007, the median length of residency for out-migrants (those who moved out of the Yukon during the year) was three years. This figure was down by one year since 2006.

In 2007, the median length of residency for non-migrants (those who remained resident in the Yukon during the year) was seven years. The median length of residency for non-migrants increased steadily from 1997 to 2002. It fell by one year in 2003, and subsequently remained steady at seven years to 2007.

Median Length of Residency (Years), by Sex, Yukon, 1997 to 2007

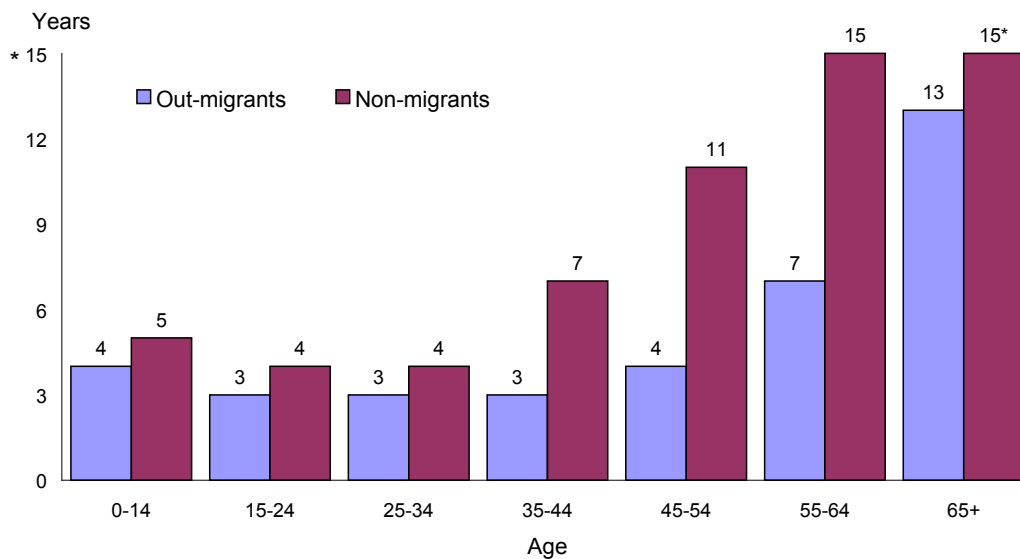


From 1997 to 2006, the median length of residency for out-migrant males and out-migrant females showed that males were slightly more mobile than females. However, in 2007, the median length of residency for both out-migrant males and females was the same at three years.

Non-migrant males and non-migrant females also have similar migration patterns. In 2007, the median length of residency for non-migrant males was six years, and eight years for females.

Median Length of Residency cont.

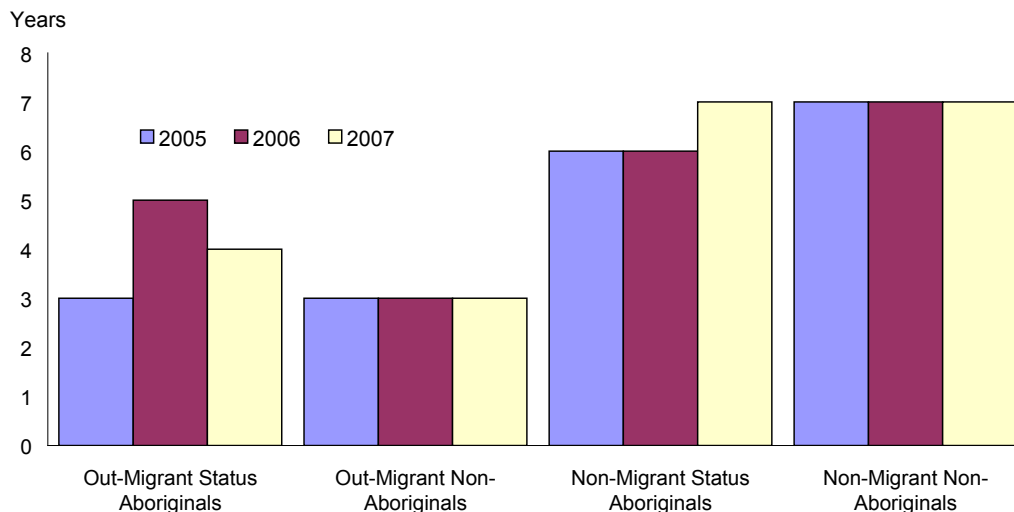
Median Length of Residency (Years), by Age, Yukon, 2007



* Refers to median length of residency as 15 or more years. Data after fifteen years is limited by the Yukon Health Care Registration file.

The median length of residency for out-migrants and non-migrants increases with age (with the exception of the 0-14 year-old age group). People in younger age groups are more mobile than people in older age groups. In each age group, out-migrants are more mobile than non-migrants. In 2007, the median length of residency for non-migrants aged 55 and over was 15 or more years.

Median Length of Residency (Years), by Ethnicity, Yukon, 2005 to 2007

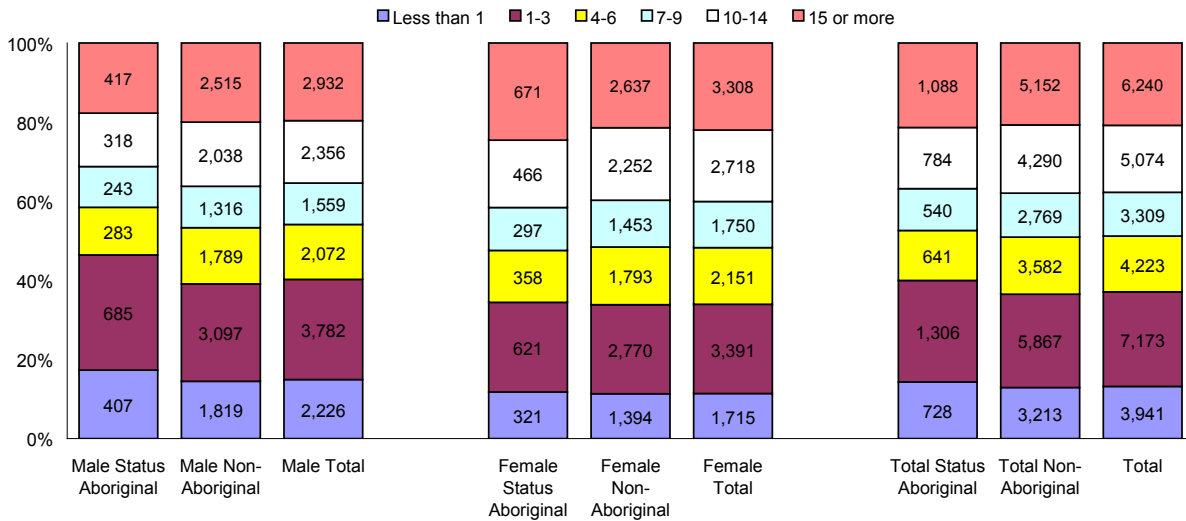


In 2007, the median length of residency for Aboriginal out-migrants and non-Aboriginal out-migrants showed that Aboriginals were less mobile than non-Aboriginal out-migrants. In 2007, the median length of residency for Aboriginal out-migrants was four years and non-Aboriginal out-migrants was three years.

In 2007, the median length of residency for both Aboriginal non-migrants and non-Aboriginal non-migrants was seven years.

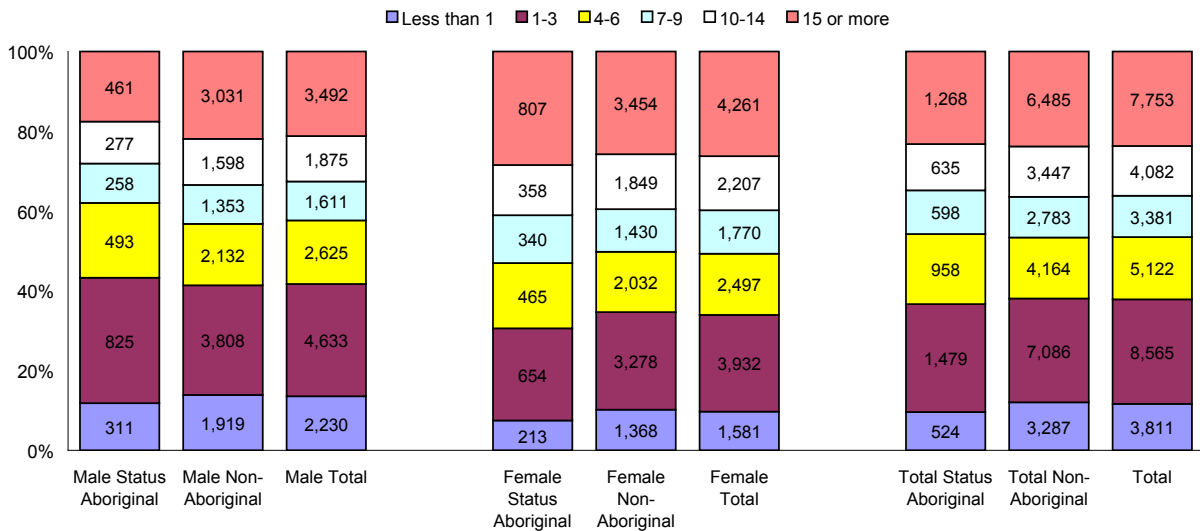
Length of Continuous Residency

Length of Continuous Residency (Years), by Ethnicity and Sex, Yukon, 2002



The 15 years or more group increased by 1,513 people, or 24.2%, when comparing 2002 to 2007. The largest decrease was in the 10-to-14-year residency group, which decreased by 992 people, or 19.6%. Comparing 2002 to 2007, there was a 3.3% decrease in the number of people whose continuous length of residency was less than one year, indicating that fewer people are immigrating to the Yukon.

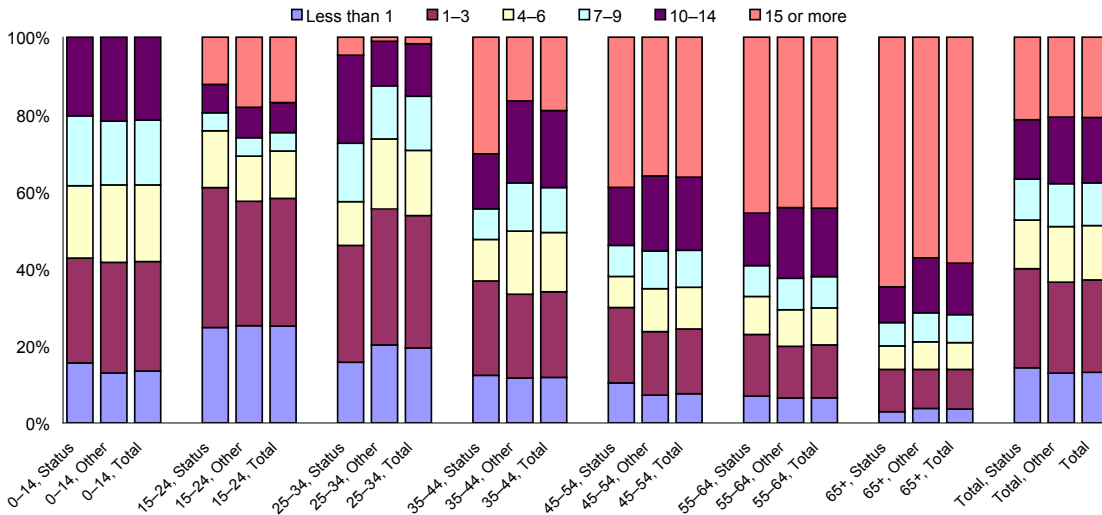
Length of Continuous Residency (Years), by Ethnicity and Sex, Yukon, 2007



In 2007, there was no significant difference between the percentage of status Aboriginals (23.2%) in residency group '15 or more years' when compared with non-Aboriginal residents (23.8%). There is a larger percentage of females (26.2%) in residency group '15 or more years' when compared with male residents (21.2%). This indicates that females are slightly less mobile than males.

Length of Continuous Residency

Length of Continuous Residency (Years), by Ethnicity and Age, Yukon, 2002

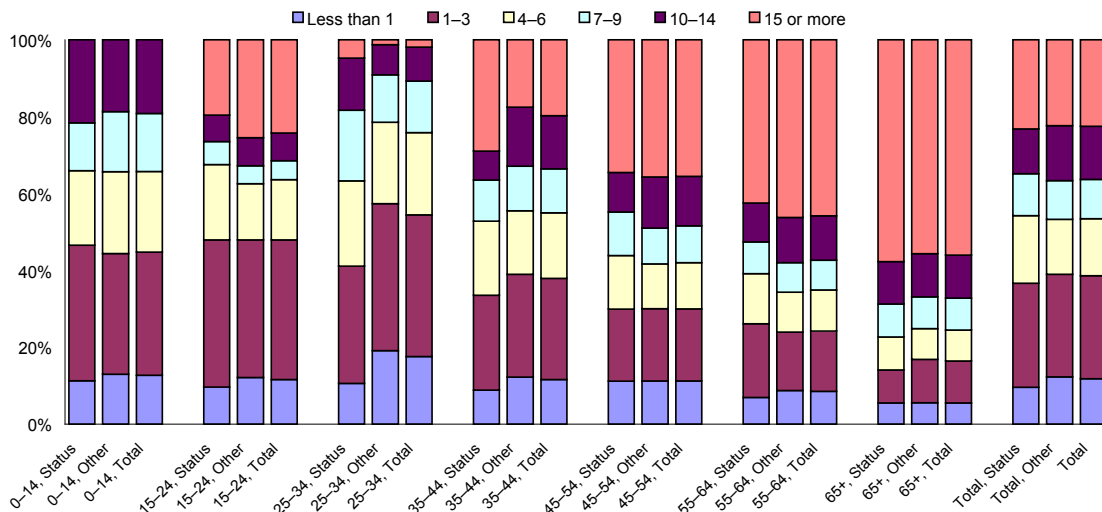


The length of continuous residency for status Aboriginals and non-Aboriginals generally increases with age. People in younger age groups are more mobile than people in older age groups. In 2007, 56.0% of residents 65 and older were continuous residents in the Yukon for 15 years or more.

The most mobile age group in 2007 in the Yukon was the 25-to-34-year-old age group. This group had the lowest percentage (1.9%) of people who have lived in the Yukon continuously for 15 or more years. The 25-to-34-year-old age group also had a high percentage of people who lived in the Yukon for less than one year (17.6%). Status Aboriginals were less mobile than non-Aboriginals in the 25-to-34-year-old age group and, to a lesser degree, the same held for the 35-to-44-year-old age group.

Comparing 2002 to 2007, the percentage of people who have lived in the Yukon continuously for 15 or more years increased in each age group except the 45-to-54- and 65+ age group.

Length of Continuous Residency (Years), by Ethnicity and Age, Yukon, 2007



Immigration—Tables

	Male								Total		Female								Total
	0-14	15-24	25-34	35-44	45-54	55-64	65+	0-14			15-24	25-34	35-44	45-54	55-64	65+			
1998Q1	50	44	68	70	27	6	5	270		1998Q1	46	50	54	37	17	6	4	214	
1998Q2	62	194	293	217	114	57	30	967		1998Q2	68	140	129	109	54	24	21	545	
1998Q3	76	72	85	88	54	16	5	396		1998Q3	77	89	93	78	39	9	9	394	
1998Q4	76	176	217	178	101	35	12	795		1998Q4	72	101	127	91	42	20	7	460	
1998	264	486	663	553	296	114	52	2,428		1998	263	380	403	315	152	59	41	1,613	
1999Q1	31	54	88	58	35	7	2	275		1999Q1	46	44	57	41	23	6	5	222	
1999Q2	57	165	235	177	121	48	11	814		1999Q2	67	94	107	85	56	26	13	448	
1999Q3	74	63	96	101	62	28	6	430		1999Q3	63	76	92	64	35	12	5	347	
1999Q4	73	85	112	77	57	14	9	427		1999Q4	58	63	86	58	38	6	8	317	
1999	235	367	531	413	275	97	28	1,946		1999	234	277	342	248	152	50	31	1,334	
2000Q1	38	51	82	48	31	13	6	269		2000Q1	38	38	49	36	34	5	5	205	
2000Q2	48	113	158	125	68	30	19	561		2000Q2	72	81	76	67	41	18	17	372	
2000Q3	65	76	103	92	47	31	14	428		2000Q3	55	77	84	58	48	13	10	345	
2000Q4	50	147	168	169	83	40	9	666		2000Q4	58	92	108	75	44	8	9	394	
2000	201	387	511	434	229	114	48	1,924		2000	223	288	317	236	167	44	41	1,316	
2001Q1	35	74	106	86	44	18	5	368		2001Q1	54	56	64	38	25	13	5	255	
2001Q2	34	172	224	208	136	51	13	838		2001Q2	38	96	86	86	56	19	13	394	
2001Q3	53	87	112	90	52	31	10	435		2001Q3	54	74	63	61	38	10	6	306	
2001Q4	65	152	160	136	84	46	4	647		2001Q4	71	95	122	75	54	18	10	445	
2001	187	485	602	520	316	146	32	2,288		2001	217	321	335	260	173	60	34	1,400	
2002Q1	45	60	94	76	33	16	2	326		2002Q1	36	44	55	48	30	8	3	224	
2002Q2	37	31	83	55	47	26	6	285		2002Q2	32	50	47	30	26	10	7	202	
2002Q3	76	109	121	117	67	42	12	544		2002Q3	86	96	96	94	48	17	10	447	
2002Q4	61	81	104	97	63	17	14	437		2002Q4	52	60	73	45	45	11	8	294	
2002	219	281	402	345	210	101	34	1,592		2002	206	250	271	217	149	46	28	1,167	
2003Q1	62	99	127	90	60	36	12	486		2003Q1	53	60	91	62	33	16	7	322	
2003Q2	34	66	87	88	59	22	9	365		2003Q2	41	50	76	45	23	14	7	256	
2003Q3	96	151	183	142	105	43	8	728		2003Q3	87	97	112	79	58	30	13	476	
2003Q4	52	55	66	70	74	29	15	361		2003Q4	51	53	82	49	48	16	9	308	
2003	244	371	463	390	298	130	44	1,940		2003	232	260	361	235	162	76	36	1,362	
2004Q1	57	125	137	101	72	36	10	538		2004Q1	60	87	100	66	49	11	10	383	
2004Q2	43	61	100	62	50	29	11	356		2004Q2	52	47	81	42	37	20	11	290	
2004Q3	80	110	124	108	101	44	17	584		2004Q3	79	77	103	74	58	24	12	427	
2004Q4	47	75	115	81	70	26	6	420		2004Q4	50	59	68	53	37	13	9	289	
2004	227	371	476	352	293	135	44	1,898		2004	241	270	352	235	181	68	42	1,389	
2005Q1	29	69	80	78	57	17	6	336		2005Q1	58	64	61	44	28	11	4	270	
2005Q2	42	69	96	70	52	30	12	371		2005Q2	38	57	74	58	38	16	6	287	
2005Q3	67	98	149	102	83	35	22	556		2005Q3	72	70	98	64	52	20	18	394	
2005Q4	59	60	113	78	58	44	11	423		2005Q4	58	58	61	64	46	30	8	325	
2005	197	296	438	328	250	126	51	1,686		2005	226	249	294	230	164	77	36	1,276	
2006Q1	47	79	116	94	87	47	15	485		2006Q1	49	64	78	52	44	15	10	312	
2006Q2	30	106	159	158	109	81	23	666		2006Q2	33	67	80	59	69	30	14	352	
2006Q3	51	45	87	52	51	24	12	322		2006Q3	29	60	69	47	64	37	12	318	
2006Q4	56	44	70	58	47	26	6	307		2006Q4	50	60	86	32	36	16	6	286	
2006	184	274	432	362	294	178	56	1,780		2006	161	251	313	190	213	98	42	1,268	
2007Q1	28	113	128	138	198	90	18	713		2007Q1	32	59	90	72	98	45	23	419	
2007Q2	27	48	71	51	42	19	5	263		2007Q2	25	35	59	26	22	10	4	181	
2007Q3	72	82	121	85	117	48	23	548		2007Q3	47	71	85	61	56	41	18	379	
2007Q4	89	142	182	180	166	102	36	897		2007Q4	100	99	111	95	109	46	23	583	
2007	216	385	502	454	523	259	82	2,421		2007	204	264	345	254	285	142	68	1,562	

	Both Sexes								Total		Both Sexes								Total
	0-14	15-24	25-34	35-44	45-54	55-64	65+	0-14			15-24	25-34	35-44	45-54	55-64	65+			
1998Q1	96	94	122	107	44	12	9	484		2003Q1	115	159	218	152	93	52	19	808	
1998Q2	130	334	422	326	168	81	51	1,512		2003Q2	75	116	163	133	82	36	16	621	
1998Q3	153	161	178	166	93	25	14	790		2003Q3	183	248	295	221	163	73	21	1,204	
1998Q4	148	277	344	269	143	55	19	1,255		2003Q4	103	108	148	119	122	45	24	669	
1998	527	866	1,066	868	448	173	93	4,041		2003	476	631	824	625	460	206	80	3,302	
1999Q1	77	98	145	99	58	13	7	497		2004Q1	117	212	237	167	121	47	20	921	
1999Q2	124	259	342	262	177	74	24	1,262		2004Q2	95	108	181	104	87	49	22	646	
1999Q3	137	139	188	165	97	40	11	777		2004Q3	159	187	227	182	159	68	29	1,011	
1999Q4	131	148	198	135	95	20	17	744		2004Q4	97	134	183	134	107	39	15	709	
1999	469	644	873	661	427	147	59	3,280		2004	468	641	828	587	474	203	86	3,287	
2000Q1	76	89	131	84	65	18	11	474		2005Q1	87	133	141	122	85	28	10	606	
2000Q2	120	194	234	192	109	48	36	933		2005Q2	80	126	170	128	90	46	18	658	
2000Q3	120	153	187	150	95	44	24	773		2005Q3	139	168	247	166	135	55	40	950	
2000Q4	108	239	276	244	127	48	18	1,060		2005Q4	117	118	174	142	104	74	19	748	
2000	424	675	828	670	396	158	89	3,240		2005	423	545	732	558	414	203	87	2,962	
2001Q1	89	130	170	124	69	31	10	623		2006Q1	96	143	194	146	131	62	25	797	
2001Q2	72	268	310	294	192	70	26	1,232		2006Q2	63	173	239	217	178	111	37	1,018	
2001Q3	107	161	175	151	90	41	16	741		2006Q3	80	105	156	99	115	61	24	640	
2001Q4	136	247	282	211	138	64	14	1,092		2006Q4	106	104	156	90	83	42	12	593	
2001	404	806	937	780	489	206	66	3,688		2006	345	525	745	552	507	276	98	3,048	
2002Q1	81	104	149	124	63	24	5	550		2007Q1	60	172	218	210	296	135	41	1,132	
2002Q2	69	81	130	85	73	36	13	487		2007Q2	52	83	130	77	64	29	9	444	
2002Q3	162	205	217																

Emigration—Tables

	Male							Total	Female							Total	
	0-14	15-24	25-34	35-44	45-54	55-64	65+		0-14	15-24	25-34	35-44	45-54	55-64	65+		
1998Q1	114	177	267	191	143	49	30	971	1998Q1	119	107	156	92	63	27	12	576
1998Q2	157	228	250	212	127	61	3	1,038	1998Q2	140	150	186	128	74	27	0	705
1998Q3	90	140	241	161	91	41	13	777	1998Q3	79	96	125	91	42	35	15	483
1998Q4	119	182	224	186	126	51	9	897	1998Q4	104	114	119	115	78	31	10	571
1998	480	727	982	750	487	202	55	3,683	1998	442	467	586	426	257	120	37	2,335
1999Q1	77	102	148	139	84	38	12	600	1999Q1	83	79	98	89	49	22	7	427
1999Q2	52	171	255	171	110	44	18	821	1999Q2	38	116	115	91	51	16	14	441
1999Q3	85	125	195	145	92	41	20	703	1999Q3	72	65	87	69	53	20	14	380
1999Q4	110	71	85	76	45	12	1	400	1999Q4	114	72	85	79	34	17	0	401
1999	324	469	683	531	331	135	51	2,524	1999	307	332	385	328	187	75	35	1,649
2000Q1	64	39	65	53	37	9	7	274	2000Q1	64	40	68	55	38	5	6	276
2000Q2	79	131	169	150	100	46	18	693	2000Q2	77	100	124	96	56	20	10	483
2000Q3	48	149	154	153	73	42	9	628	2000Q3	42	87	92	68	47	15	8	359
2000Q4	63	174	207	159	125	42	17	787	2000Q4	54	110	109	100	53	17	13	456
2000	254	493	595	515	335	139	51	2,382	2000	237	337	393	319	194	57	37	1,574
2001Q1	77	122	120	121	69	30	7	546	2001Q1	54	76	95	57	39	16	8	345
2001Q2	100	196	160	153	82	48	26	765	2001Q2	101	128	121	90	71	23	10	544
2001Q3	68	110	136	113	60	29	7	523	2001Q3	57	75	77	66	45	13	5	338
2001Q4	85	131	163	118	80	25	16	618	2001Q4	74	79	86	90	55	23	12	419
2001	330	559	579	505	291	132	56	2,452	2001	286	358	379	303	210	75	35	1,646
2002Q1	55	134	139	122	67	32	14	563	2002Q1	56	83	87	64	39	15	11	355
2002Q2	23	59	85	35	40	24	9	275	2002Q2	16	36	38	27	22	12	6	157
2002Q3	51	143	146	122	91	56	14	623	2002Q3	66	83	106	53	50	34	12	404
2002Q4	84	106	101	108	69	51	16	535	2002Q4	86	88	78	78	58	23	10	421
2002	213	442	471	387	267	163	53	1,996	2002	224	290	309	222	169	84	39	1,337
2003Q1	52	130	138	125	92	33	8	578	2003Q1	37	80	72	69	49	24	13	344
2003Q2	49	68	83	63	51	44	7	365	2003Q2	57	46	74	53	41	18	7	296
2003Q3	53	162	140	122	90	39	17	623	2003Q3	57	105	93	76	41	17	9	398
2003Q4	45	28	43	32	36	17	9	210	2003Q4	46	29	46	35	33	16	5	210
2003	199	388	404	342	269	133	41	1,776	2003	197	260	285	233	164	75	34	1,248
2004Q1	74	126	134	105	84	35	20	578	2004Q1	69	77	91	79	51	32	12	411
2004Q2	32	55	68	53	44	20	4	276	2004Q2	42	44	62	34	32	15	5	234
2004Q3	46	117	94	73	56	27	10	423	2004Q3	36	93	67	42	39	24	2	303
2004Q4	51	48	53	51	45	26	12	286	2004Q4	56	49	59	51	43	22	4	284
2004	203	346	349	282	229	108	46	1,563	2004	203	263	279	206	165	93	23	1,232
2005Q1	41	97	85	95	74	42	18	452	2005Q1	47	72	67	55	44	23	14	322
2005Q2	22	44	48	27	35	20	5	201	2005Q2	27	38	34	28	21	13	7	168
2005Q3	44	111	116	109	99	51	11	541	2005Q3	45	90	82	70	61	25	7	380
2005Q4	41	57	55	36	49	29	12	279	2005Q4	54	51	48	41	52	15	11	272
2005	148	309	304	267	257	142	46	1,473	2005	173	251	231	194	178	76	39	1,142
2006Q1	30	114	119	119	99	57	16	554	2006Q1	39	56	61	46	47	23	9	281
2006Q2	27	95	92	77	124	72	15	502	2006Q2	26	66	46	46	88	48	15	335
2006Q3	17	15	50	57	74	27	9	249	2006Q3	16	24	43	42	52	33	14	224
2006Q4	43	36	51	42	47	24	14	257	2006Q4	29	38	43	38	25	25	13	211
2006	117	260	312	295	344	180	54	1,562	2006	110	184	193	172	212	129	51	1,051
2007Q1	55	132	106	125	115	65	25	623	2007Q1	65	99	85	67	86	52	22	476
2007Q2	29	52	56	53	59	40	18	307	2007Q2	36	38	36	41	35	23	10	219
2007Q3	40	81	125	99	95	57	16	513	2007Q3	31	47	66	49	58	28	13	292
2007Q4	52	123	181	122	121	59	25	683	2007Q4	48	77	90	75	85	45	14	434
2007	176	388	468	399	390	221	84	2,126	2007	180	261	277	232	264	148	59	1,421

	Both Sexes							Total	Both Sexes							Total	
	0-14	15-24	25-34	35-44	45-54	55-64	65+		0-14	15-24	25-34	35-44	45-54	55-64	65+		
1998Q1	233	284	423	283	206	76	42	1,547	2003Q1	89	210	210	194	141	57	21	922
1998Q2	297	378	436	340	201	88	3	1,743	2003Q2	106	114	157	116	92	62	14	661
1998Q3	169	236	366	252	133	76	28	1,260	2003Q3	110	267	233	198	131	56	26	1,021
1998Q4	223	296	343	301	204	82	19	1,468	2003Q4	91	57	89	67	69	33	14	420
1998	922	1,194	1,568	1,176	744	322	92	6,018	2003	396	648	689	575	433	208	75	3,024
1999Q1	160	181	246	228	133	60	19	1,027	2004Q1	143	203	225	184	135	67	32	989
1999Q2	90	287	370	262	161	60	32	1,262	2004Q2	74	99	130	87	76	35	9	510
1999Q3	157	190	282	214	145	61	34	1,083	2004Q3	82	210	161	115	95	51	12	726
1999Q4	224	143	170	155	79	29	1	801	2004Q4	107	97	112	102	88	48	16	570
1999	631	801	1,068	859	518	210	86	4,173	2004	406	609	628	488	394	201	69	2,795
2000Q1	128	79	133	108	75	14	13	550	2005Q1	88	169	152	150	118	65	32	774
2000Q2	156	231	293	246	156	66	28	1,176	2005Q2	49	82	82	55	56	33	12	369
2000Q3	90	236	246	221	120	57	17	987	2005Q3	89	201	198	179	160	76	18	921
2000Q4	117	284	316	259	178	59	30	1,243	2005Q4	95	108	103	77	101	44	23	551
2000	491	830	988	834	529	196	88	3,956	2005	321	560	535	461	435	218	85	2,615
2001Q1	131	198	215	178	108	46	15	891	2006Q1	69	170	180	165	146	80	25	835
2001Q2	201	324	281	243	153	71	36	1,309	2006Q2	53	161	138	123	212	120	30	837
2001Q3	125	185	213	179	105	42	12	861	2006Q3	33	39	93	99	126	60	23	473
2001Q4	159	210	249	208	135	48	28	1,037	2006Q4	72	74	94	80	72	49	27	468
2001	616	917	958	808	501	207	91	4,098	2006	227	444	505	467	556	309	105	2,613
2002Q1	111	217	226	186	106	47	25	918	2007Q1	120	231	191	192	201	117	47	1,099
2002Q2	39	95	123	62	62	36	15	432	200								

Net Migration—Tables

	Male							Total	Female							Total	
	0-14	15-24	25-34	35-44	45-54	55-64	65+		0-14	15-24	25-34	35-44	45-54	55-64	65+		
1998Q1	-64	-133	-199	-121	-116	-43	-25	-701	1998Q1	-73	-57	-102	-55	-46	-21	-8	-362
1998Q2	-95	-34	43	5	-13	-4	27	-71	1998Q2	-72	-10	-57	-19	-20	-3	21	-160
1998Q3	-14	-68	-156	-73	-37	-25	-8	-381	1998Q3	-2	-7	-32	-13	-3	-26	-6	-89
1998Q4	-43	-6	-7	-8	-25	-16	3	-102	1998Q4	-32	-13	8	-24	-36	-11	-3	-111
1998	-216	-241	-319	-197	-191	-88	-3	-1,255	1998	-179	-87	-183	-111	-105	-61	4	-722
1999Q1	-46	-48	-60	-81	-49	-31	-10	-325	1999Q1	-37	-35	-41	-48	-26	-16	-2	-205
1999Q2	5	-6	-20	6	11	4	-7	-7	1999Q2	29	-22	-8	-6	5	10	-1	7
1999Q3	-11	-62	-99	-44	-30	-13	-14	-273	1999Q3	-9	11	5	-5	-18	-8	-9	-33
1999Q4	-37	14	27	1	12	2	8	27	1999Q4	-56	-9	1	-21	4	-11	8	-84
1999	-89	-102	-152	-118	-56	-38	-23	-578	1999	-73	-55	-43	-80	-35	-25	-4	-315
2000Q1	-26	12	17	-5	-6	4	-1	-5	2000Q1	-26	-2	-19	-19	-4	0	-1	-71
2000Q2	-31	-18	-11	-25	-32	-16	1	-132	2000Q2	-5	-19	-48	-29	-15	-2	7	-111
2000Q3	17	-73	-51	-61	-26	-11	5	-200	2000Q3	13	-10	-8	-10	1	-2	2	-14
2000Q4	-13	-27	-39	10	-42	-2	-8	-121	2000Q4	4	-18	-1	-25	-9	-9	-4	-62
2000	-53	-106	-84	-81	-106	-25	-3	-458	2000	-14	-49	-76	-83	-27	-13	4	-258
2001Q1	-42	-48	-14	-35	-25	-12	-2	-178	2001Q1	0	-20	-31	-19	-14	-3	-3	-90
2001Q2	-66	-24	64	55	54	3	-13	73	2001Q2	-63	-32	-35	-4	-15	-4	3	-150
2001Q3	-15	-23	-24	-23	-8	2	3	-88	2001Q3	-3	-1	-14	-5	-7	-3	1	-32
2001Q4	-20	21	-3	18	4	21	-12	29	2001Q4	-3	16	36	-15	-1	-5	-2	26
2001	-143	-74	23	15	25	14	-24	-164	2001	-69	-37	-46	-43	-37	-15	-1	-246
2002Q1	-10	-74	-45	-46	-34	-16	-12	-237	2002Q1	-20	-39	-32	-16	-9	-7	-8	-131
2002Q2	14	-28	-2	20	7	2	-3	10	2002Q2	16	14	9	3	4	-2	1	45
2002Q3	25	-34	-25	-5	-24	-14	-2	-79	2002Q3	20	13	-10	41	-2	-17	-2	43
2002Q4	-23	-25	3	-11	-6	-34	-2	-98	2002Q4	-34	-28	-5	-33	-13	-12	-2	-127
2002	6	-161	-69	-42	-57	-62	-19	-404	2002	-18	-40	-38	-5	-20	-38	-11	-170
2003Q1	10	-31	-11	-35	-32	3	4	-92	2003Q1	16	-20	19	-7	-16	-8	-6	-22
2003Q2	-15	-2	4	25	8	-22	2	0	2003Q2	-16	4	2	-8	-18	-4	0	-40
2003Q3	43	-11	43	20	15	4	-9	105	2003Q3	30	-8	19	3	17	13	4	78
2003Q4	7	27	23	38	38	12	6	151	2003Q4	5	24	36	14	15	0	4	98
2003	45	-17	59	48	29	-3	3	164	2003	35	0	76	2	-2	1	2	114
2004Q1	-17	-1	3	-4	-12	1	-10	-40	2004Q1	-9	10	9	-13	-2	-21	-2	-28
2004Q2	11	6	32	9	6	9	7	80	2004Q2	10	3	19	8	5	5	6	56
2004Q3	34	-7	30	35	45	17	7	161	2004Q3	43	-16	36	32	19	0	10	124
2004Q4	-4	27	62	30	25	0	-6	134	2004Q4	-6	10	9	2	-6	-9	5	5
2004	24	25	127	70	64	27	-2	335	2004	38	7	73	29	16	-25	19	157
2005Q1	-12	-28	-5	-17	-17	-25	-12	-116	2005Q1	11	-8	-6	-11	-16	-12	-10	-52
2005Q2	20	25	48	43	17	10	7	170	2005Q2	11	19	40	30	17	3	-1	119
2005Q3	23	-13	33	-7	-16	-16	11	15	2005Q3	27	-20	16	-6	-9	-5	11	14
2005Q4	18	3	58	42	9	15	-1	144	2005Q4	4	7	13	23	-6	15	-3	53
2005	49	-13	134	61	-7	-16	5	213	2005	53	-2	63	36	-14	1	-3	134
2006Q1	17	-35	-3	-25	-12	-10	-1	-69	2006Q1	10	8	17	6	-3	-8	1	31
2006Q2	3	11	67	81	-15	9	8	164	2006Q2	7	1	34	13	-19	-18	-1	17
2006Q3	34	30	37	-5	-23	-3	3	73	2006Q3	13	36	26	5	12	4	-2	94
2006Q4	13	8	19	16	0	2	-8	50	2006Q4	21	22	43	-6	11	-9	-7	75
2006	67	14	120	67	-50	-2	2	218	2006	51	67	120	18	1	-31	-9	217
2007Q1	-27	-19	22	13	83	25	-7	90	2007Q1	-33	-40	5	5	12	-7	1	-57
2007Q2	-2	-4	15	-2	-17	-21	-13	-44	2007Q2	-11	-3	23	-15	-13	-13	-6	-38
2007Q3	32	1	-4	-14	22	-9	7	35	2007Q3	16	24	19	12	-2	13	5	87
2007Q4	37	19	1	58	45	43	11	214	2007Q4	52	22	21	20	24	1	9	149
2007	40	-3	34	55	133	38	-2	295	2007	24	3	68	22	21	-6	9	141

	Both Sexes							Total	Both Sexes							Total	
	0-14	15-24	25-34	35-44	45-54	55-64	65+		0-14	15-24	25-34	35-44	45-54	55-64	65+		
1998Q1	-137	-190	-301	-176	-162	-64	-33	-1,063	2003Q1	26	-51	8	-42	-48	-5	-2	-114
1998Q2	-167	-44	-14	-14	-33	-7	48	-231	2003Q2	-31	2	6	17	-10	-26	2	-40
1998Q3	-16	-75	-188	-86	-40	-51	-14	-470	2003Q3	73	-19	62	23	32	17	-5	183
1998Q4	-75	-19	1	-32	-61	-27	0	-213	2003Q4	12	51	59	52	53	12	10	249
1998	-395	-328	-502	-308	-296	-149	1	-1,977	2003	80	-17	135	50	27	-2	5	278
1999Q1	-83	-83	-101	-129	-75	-47	-12	-530	2004Q1	-26	9	12	-17	-14	-20	-12	-68
1999Q2	34	-28	-28	0	16	14	-8	0	2004Q2	21	9	51	17	11	14	13	136
1999Q3	-20	-51	-94	-49	-48	-21	-23	-306	2004Q3	77	-23	66	67	64	17	17	285
1999Q4	-93	5	28	-20	16	-9	16	-57	2004Q4	-10	37	71	32	19	-9	-1	139
1999	-162	-157	-195	-198	-91	-63	-27	-893	2004	62	32	200	99	80	2	17	492
2000Q1	-52	10	-2	-24	-10	4	-2	-76	2005Q1	-1	-36	-11	-28	-33	-37	-22	-168
2000Q2	-36	-37	-59	-54	-47	-18	8	-243	2005Q2	31	44	88	73	34	13	6	289
2000Q3	30	-83	-59	-71	-25	-13	7	-214	2005Q3	50	-33	49	-13	-25	-21	22	29
2000Q4	-9	-45	-40	-15	-51	-11	-12	-183	2005Q4	22	10	71	65	3	30	-4	197
2000	-67	-155	-160	-164	-133	-38	1	-716	2005	102	-15	197	97	-21	-15	2	347
2001Q1	-42	-68	-45	-54	-39	-15	-5	-268	2006Q1	27	-27	14	-19	-15	-18	0	-38
2001Q2	-129	-56	29	51	39	-1	-10	-77	2006Q2	10	12	101	94	-34	-9	7	181
2001Q3	-18	-24	-38	-28	-15	-1	4	-120	2006Q3	47	66	63	0	-11	1	1	167
2001Q4	-23	37	33	3	3	16	-14	55	2006Q4	34	30	62	10	11	-7	-15	125
2001	-212	-111	-21	-28	-12	-1	-25	-410	2006	118	81	240	85	-49	-33	-7	435
2002Q1	-30	-113	-77	-62	-43	-23	-20	-368	2007Q1	-60	-59	27	18	95	18	-6	33
2002Q2	30	-14	7	23	11	0	-2	55	2007Q2	-13	-7	38	-17	-30	-34	-19	-82
2002Q3	45	-21	-35	36	-26	-31	-4	-36	2007Q3	48	25	15	-2	20	4	12	122
2002Q4	-57	-53	-2	-44	-19	-46	-4	-225	2007Q4	89	41	22	78	69	44	20	363
2002	-12	-201	-107	-47	-77	-100	-30	-574	2007	64	0	102	77	154	32	7	436

Turnover—Tables

	Male							Total	Female							Total	
	0-14	15-24	25-34	35-44	45-54	55-64	65+		0-14	15-24	25-34	35-44	45-54	55-64	65+		
1998Q1	164	221	335	261	170	55	35	1,241	1998Q1	165	157	210	129	80	33	16	790
1998Q2	219	422	543	429	241	118	33	2,005	1998Q2	208	290	315	237	128	51	21	1,250
1998Q3	166	212	326	249	145	57	18	1,173	1998Q3	156	185	218	169	81	44	24	877
1998Q4	195	358	441	364	227	86	21	1,692	1998Q4	176	215	246	206	120	51	17	1,031
1998	744	1,213	1,645	1,303	783	316	107	6,111	1998	705	847	989	741	409	179	78	3,948
1999Q1	108	156	236	197	119	45	14	875	1999Q1	129	123	155	130	72	28	12	649
1999Q2	109	336	490	348	231	92	29	1,635	1999Q2	105	210	222	176	107	42	27	889
1999Q3	159	188	291	246	154	69	26	1,133	1999Q3	135	141	179	133	88	32	19	727
1999Q4	183	156	197	153	102	26	10	827	1999Q4	172	135	171	137	72	23	8	718
1999	559	836	1,214	944	606	232	79	4,470	1999	541	609	727	576	339	125	66	2,983
2000Q1	102	90	147	101	68	22	13	543	2000Q1	102	78	117	91	72	10	11	481
2000Q2	127	244	327	275	168	76	37	1,254	2000Q2	149	181	200	163	97	38	27	855
2000Q3	113	225	257	245	120	73	23	1,056	2000Q3	97	164	176	126	95	28	18	704
2000Q4	113	321	375	328	208	82	26	1,453	2000Q4	112	202	217	175	97	25	22	850
2000	455	880	1,106	949	564	253	99	4,306	2000	460	625	710	555	361	101	78	2,890
2001Q1	112	196	226	207	113	48	12	914	2001Q1	108	132	159	95	64	29	13	600
2001Q2	134	368	384	361	218	99	39	1,603	2001Q2	139	224	207	176	127	42	23	938
2001Q3	121	197	248	203	112	60	17	958	2001Q3	111	149	140	127	83	23	11	644
2001Q4	150	283	323	254	164	71	20	1,265	2001Q4	145	174	208	165	109	41	22	864
2001	517	1,044	1,181	1,025	607	278	88	4,740	2001	503	679	714	563	383	135	69	3,046
2002Q1	100	194	233	198	100	48	16	889	2002Q1	92	127	142	112	69	23	14	579
2002Q2	60	90	168	90	87	50	15	560	2002Q2	48	86	85	57	48	22	13	359
2002Q3	127	252	267	239	158	98	26	1,167	2002Q3	152	179	202	147	98	51	22	851
2002Q4	145	187	205	205	132	68	30	972	2002Q4	138	148	151	123	103	34	18	715
2002	432	723	873	732	477	264	87	3,588	2002	430	540	580	439	318	130	67	2,504
2003Q1	114	229	265	215	152	69	20	1,064	2003Q1	90	140	163	131	82	40	20	666
2003Q2	83	134	170	151	110	66	16	730	2003Q2	98	96	150	98	64	32	14	552
2003Q3	149	313	323	264	195	82	25	1,351	2003Q3	144	202	205	155	99	47	22	874
2003Q4	97	83	109	102	110	46	24	571	2003Q4	97	82	128	84	81	32	14	518
2003	443	759	867	732	567	263	85	3,716	2003	429	520	646	468	326	151	70	2,610
2004Q1	131	251	271	206	156	71	30	1,116	2004Q1	129	164	191	145	100	43	22	794
2004Q2	75	116	168	115	94	49	15	632	2004Q2	94	91	143	76	69	35	16	524
2004Q3	126	227	218	181	157	71	27	1,007	2004Q3	115	170	170	116	97	48	14	730
2004Q4	98	123	168	132	115	52	18	706	2004Q4	106	108	127	104	80	35	13	573
2004	430	717	825	634	522	243	90	3,461	2004	444	533	631	441	346	161	65	2,621
2005Q1	70	166	165	173	131	59	24	788	2005Q1	105	136	128	99	72	34	18	592
2005Q2	64	113	144	97	87	50	17	572	2005Q2	65	95	108	86	59	29	13	455
2005Q3	111	209	265	211	182	86	33	1,097	2005Q3	117	160	180	134	113	45	25	774
2005Q4	100	117	168	114	107	73	23	702	2005Q4	112	109	109	105	98	45	19	597
2005	345	605	742	595	507	268	97	3,159	2005	399	500	525	424	342	153	75	2,418
2006Q1	77	193	235	213	186	104	31	1,039	2006Q1	88	120	139	98	91	38	19	593
2006Q2	57	201	251	235	233	153	38	1,168	2006Q2	59	133	126	105	157	78	29	687
2006Q3	68	60	137	109	125	51	21	571	2006Q3	45	84	112	89	116	70	26	542
2006Q4	99	80	121	100	94	50	20	564	2006Q4	79	98	129	70	61	41	19	497
2006	301	534	744	657	638	358	110	3,342	2006	271	435	506	362	425	227	93	2,319
2007Q1	83	245	234	263	313	155	43	1,336	2007Q1	97	158	175	139	184	97	45	895
2007Q2	56	100	127	104	101	59	23	570	2007Q2	61	73	95	67	57	33	14	400
2007Q3	112	163	246	184	212	105	39	1,061	2007Q3	78	118	151	110	114	69	31	671
2007Q4	141	265	363	302	287	161	61	1,580	2007Q4	148	176	201	170	194	91	37	1,017
2007	392	773	970	853	913	480	166	4,547	2007	384	525	622	486	549	290	127	2,983

	Both Sexes							Total	Both Sexes							Total	
	0-14	15-24	25-34	35-44	45-54	55-64	65+		0-14	15-24	25-34	35-44	45-54	55-64	65+		
1998Q1	329	378	545	390	250	88	51	2,031	2003Q1	204	369	428	346	234	109	40	1,730
1998Q2	427	712	858	666	369	169	54	3,255	2003Q2	181	230	320	249	174	98	30	1,282
1998Q3	322	397	544	418	226	101	42	2,050	2003Q3	293	515	528	419	294	129	47	2,225
1998Q4	371	573	687	570	347	137	38	2,723	2003Q4	194	165	237	186	191	78	38	1,089
1998	1,449	2,060	2,634	2,044	1,192	495	185	10,059	2003	872	1,279	1,513	1,200	893	414	155	6,326
1999Q1	237	279	391	327	191	73	26	1,524	2004Q1	260	415	462	351	256	114	52	1,910
1999Q2	214	546	712	524	338	134	56	2,524	2004Q2	169	207	311	191	163	84	31	1,156
1999Q3	294	329	470	379	242	101	45	1,860	2004Q3	241	397	388	297	254	119	41	1,737
1999Q4	355	291	368	290	174	49	18	1,545	2004Q4	204	231	295	236	195	87	31	1,279
1999	1,100	1,445	1,941	1,520	945	357	145	7,453	2004	874	1,250	1,456	1,075	868	404	155	6,082
2000Q1	204	168	264	192	140	32	24	1,024	2005Q1	175	302	293	272	203	93	42	1,080
2000Q2	276	425	527	438	265	114	64	2,109	2005Q2	129	208	252	183	146	79	30	1,327
2000Q3	210	389	433	371	215	101	41	1,760	2005Q3	228	369	445	345	295	131	58	1,871
2000Q4	225	523	592	503	305	107	48	2,303	2005Q4	212	226	277	219	205	118	42	1,299
2000	915	1,505	1,816	1,504	925	354	177	7,196	2005	744	1,105	1,267	1,019	849	421	172	5,577
2001Q1	220	328	385	302	177	77	25	1,514	2006Q1	165	313	374	311	277	142	50	1,632
2001Q2	273	592	591	537	345	141	62	2,541	2006Q2	116	334	377	340	390	231	67	1,855
2001Q3	232	346	388	330	195	83	28	1,602	2006Q3	113	144	249	198	241	121	47	1,113
2001Q4	295	457	531	419	273	112	42	2,129	2006Q4	178	178	250	170	155	91	39	1,061
2001	1,020	1,723	1,895	1,588	990	413	157	7,786	2006	572	969	1,250	1,019	1,063	585	203	5,661
2002Q1	192	321	375	310	169	71	30	1,468	2007Q1	180	403	409	402	497	252	88	2,231
2002Q2	108	176	253														

Median Length of Residency —Tables

	2001	2002	2003	2004	2005	2006	2007
	-----Number of Years-----						
Out-Migrants	3	2	3	3	3	4	3
Non-Migrants	8	8	7	7	7	7	7
Out-Migrant Males	2	2	2	2	2	3	3
Out-Migrant Females	3	3	3	3	3	4	3
Non-Migrant Males	7	7	7	6	6	6	6
Non-Migrant Females	8	8	8	8	8	8	8
Out-Migrant less than 15	3	3	3	3	3	3	4
Out-Migrant 15–24	1	1	2	2	2	2	3
Out-Migrant 25–34	2	2	2	2	2	2	3
Out-Migrant 35–44	3	3	3	3	3	4	3
Out-Migrant 45–54	4	3	4	4	4	7	4
Out-Migrant 55–64	6	6	6	4	5	11	7
Out-Migrant 65 or more	12	13	13	15	14	13	13
Non-Migrant less than 15	6	6	6	5	5	5	5
Non-Migrant 15–24	4	4	3	3	2	3	4
Non-Migrant 25–34	5	5	4	4	4	4	4
Non-Migrant 35–44	9	8	8	8	8	7	7
Non-Migrant 45–54	11	12	12	12	12	12	11
Non-Migrant 55–64	13	14	14	14	14	15	15
Non-Migrant 65 or more	15	15	15	15	15	15	15
Out-Migrant Status Aboriginals	3	2	3	3	3	5	4
Out-Migrant Non-Aboriginals	3	2	3	3	3	3	3
Non-Migrant Status Aboriginals	8	8	7	6	6	6	7
Non-Migrant Non-Aboriginals	8	8	7	7	7	7	7

Notes: '15' refers to median length of residency as **fifteen or more** years. Data after fifteen years are limited by the Yukon Health Care registration file.

These data were generated by comparing January 1st populations in successive years. Anyone who is in both datasets is considered a non-migrant. Anyone who moved out and moved back in within a single calendar year is counted as a non-migrant. Those who were in the population dataset on January 1st of a given year and not in the dataset on the following January 1st are counted as out-migrants.

'Median length of residency' refers to the value at which one-half of the residency lengths are higher and one-half are lower. This middle point is a better indicator of length of residency than an 'average' length would be.

Length of Continuous Residency—Tables

		2002							2007								
	 Number of Years Number of Years								
		Less than 1	1-3	4-6	7-9	10-14	15 or more	Total	Less than 1	1-3	4-6	7-9	10-14	15 or more	Total		
Status Aboriginal	0-14	181	316	218	211	237	0	1,163	Status Aboriginal	0-14	106	331	182	117	203	0	939
Non-Aboriginal	0-14	628	1,390	974	799	1,056	0	4,847	Non-Aboriginal	0-14	620	1,502	1,019	746	895	0	4,782
Total	0-14	809	1,706	1,192	1,010	1,293	0	6,010	Total	0-14	726	1,833	1,201	863	1,098	0	5,721
Status Aboriginal	15-24	208	305	124	39	62	103	841	Status Aboriginal	15-24	95	377	193	59	68	193	985
Non-Aboriginal	15-24	834	1,067	386	159	260	601	3,307	Non-Aboriginal	15-24	452	1,332	544	174	271	949	3,722
Total	15-24	1,042	1,372	510	198	322	704	4,148	Total	15-24	547	1,709	737	233	339	1,142	4,707
Status Aboriginal	25-34	111	214	80	107	161	33	706	Status Aboriginal	25-34	82	236	172	142	105	37	774
Non-Aboriginal	25-34	645	1,122	579	440	368	33	3,187	Non-Aboriginal	25-34	682	1,365	757	440	280	45	3,569
Total	25-34	756	1,336	659	547	529	66	3,893	Total	25-34	764	1,601	929	582	385	82	4,343
Status Aboriginal	35-44	125	247	109	80	144	306	1,011	Status Aboriginal	35-44	86	240	188	104	73	282	973
Non-Aboriginal	35-44	532	990	748	570	970	753	4,563	Non-Aboriginal	35-44	498	1,088	672	473	623	714	4,068
Total	35-44	657	1,237	857	650	1,114	1,059	5,574	Total	35-44	584	1,328	860	577	696	996	5,041
Status Aboriginal	45-54	67	126	52	52	97	251	645	Status Aboriginal	45-54	97	162	121	98	89	299	866
Non-Aboriginal	45-54	351	799	541	476	947	1,748	4,862	Non-Aboriginal	45-54	595	996	619	493	706	1,892	5,301
Total	45-54	418	925	593	528	1,044	1,999	5,507	Total	45-54	692	1,158	740	591	795	2,191	6,167
Status Aboriginal	55-64	26	60	37	30	51	171	375	Status Aboriginal	55-64	35	97	66	42	51	215	506
Non-Aboriginal	55-64	164	342	242	208	467	1,125	2,548	Non-Aboriginal	55-64	324	566	386	284	437	1,719	3,716
Total	55-64	190	402	279	238	518	1,296	2,923	Total	55-64	359	663	452	326	488	1,934	4,222
Status Aboriginal	65+	10	38	21	21	32	224	346	Status Aboriginal	65+	23	36	36	36	46	242	419
Non-Aboriginal	65+	59	157	112	117	222	892	1,559	Non-Aboriginal	65+	116	237	167	173	235	1,166	2,094
Total	65+	69	195	133	138	254	1,116	1,905	Total	65+	139	273	203	209	281	1,408	2,513
Status Aboriginal	Male	407	685	283	243	318	417	2,353	Status Aboriginal	Male	311	825	493	258	277	461	2,625
Non-Aboriginal	Male	1,819	3,097	1,789	1,316	2,038	2,515	12,574	Non-Aboriginal	Male	1,919	3,808	2,132	1,353	1,598	3,031	13,841
Total	Male	2,226	3,782	2,072	1,559	2,356	2,932	14,927	Total	Male	2,230	4,633	2,625	1,611	1,875	3,492	16,466
Status Aboriginal	Female	321	621	358	297	466	671	2,734	Status Aboriginal	Female	213	654	465	340	358	807	2,837
Non-Aboriginal	Female	1,394	2,770	1,793	1,453	2,252	2,637	12,299	Non-Aboriginal	Female	1,368	3,278	2,032	1,430	1,849	3,454	13,411
Total	Female	1,715	3,391	2,151	1,750	2,718	3,308	15,033	Total	Female	1,581	3,932	2,497	1,770	2,207	4,261	16,248
Status Aboriginal	Total	728	1,306	641	540	784	1,088	5,087	Status Aboriginal	Total	524	1,479	958	598	635	1,268	5,462
Non-Aboriginal	Total	3,213	5,867	3,582	2,769	4,290	5,152	24,873	Non-Aboriginal	Total	3,287	7,086	4,164	2,783	3,447	6,485	27,252
Total	Total	3,941	7,173	4,223	3,309	5,074	6,240	29,960	Total	Total	3,811	8,565	5,122	3,381	4,082	7,753	32,714

Information sheet no. 77.08—June '09