

Yukon

Chimney Sweep

*Certified
Licensed
Insured*



CHARLES NADEAU

LUCIE LEBOEUF

Working towards a safer Yukon since 2006

www.YukonChimneySweep.com

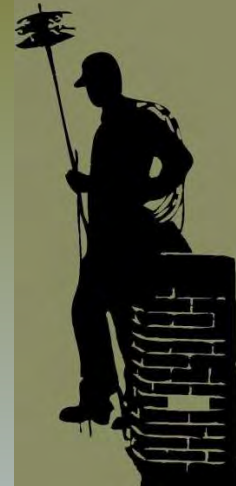
(867) 456-7295



Copyrights Yukon Chimney Sweep. All Rights Reserved



SERVICES



Chimney Sweep

Fireplace
Wood Stove
Wood Furnace/Boiler
Fireplace Insert
Cook Stove
Pellet Stove

Heating Appliance Soot Removal

Oil Furnace/Boiler
Waste Oil Furnace
Outside Wood Boiler
Oil Fired Hot Water Tank
Pellet Furnace

Dryer Vent Cleaning

Repair – Replacement

Installation

Aluminum Roof Ladder

Consultation

Inspections

by
WETT Certified
Inspectors



WETT inc.

Wood Energy Technology Transfer Inc.



- Non-profit training and education association
- The national registrar of the WETT program
- Professional training and public education for:
 - those who offer wood energy products and installation and maintenance services to the public
 - those who conduct inspections of wood burning systems
- Promotes the safe and effective use of wood burning systems in Canada.

WETT trained professionals must abide by a **Code of Ethics** requiring professionalism in all aspects of their work.

CHARLES NADEAU

WETT Certified

Chimney Sweep
Technician

Inspector - Level 3

LUCIE LEBOEUF

WETT Certified

Advisor
Inspector

PRESENTATION OVERVIEW

- ✓ Regulation
- ✓ Installation of chimneys
- ✓ Installation of solid-fuel-burning appliances
- ✓ Installation of flue pipes
- ✓ Installation of oil-fired appliances
- ✓ Chimney liners
- ✓ Soot/Creosote
- ✓ Safety concerns

Regulations

A. Codes adopted by the Yukon Government

National Building Code
of Canada

National Fire Code
of Canada

National Plumbing Code
of Canada

B. Product Safety Standards : Solid Fuels

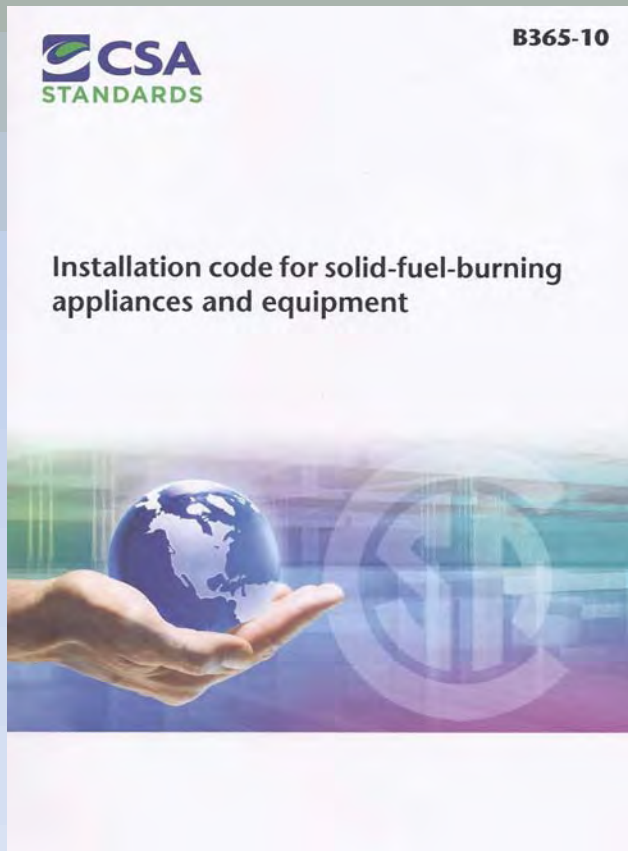
1. There are 2 main standards-writing organizations
 - a) Underwriters' Laboratories of Canada
 - b) Canadian Standards Association
2. Non-governmental
3. Non-profit



Regulations

4. CSA Standard B365-10

Installation code for solid-fuel burning appliances and equipment



- a) Adopted by the Yukon Government through references in the building code
- b) The most important solid-fuel standard for technicians and inspectors
- c) This Code applies to:
 - furnaces space heaters
 - boilers factory-built fireplaces
 - stoves water heaters
 - ranges
- d) This Code does not apply to: *(built on site)*
 - incinerators *process equipment*
 - site-built fireplaces *portable appliances*
 - masonry chimneys

Regulations

5. Other Standards for Appliances & Equipment - Solid Fuels

- | | | |
|-------------------------------------|----|---|
| - CSA Standard Can/CSA B366.1 | -> | Central systems |
| - ULC Standard Can/ ULC S610 | -> | Factory-built fireplaces |
| - ULC Standard S627 | -> | Space heaters |
| - ULC Standard S628 | -> | Fireplace inserts and hearth-mounted stoves |
| - ULC Standard Can/ULC S629 | -> | Factory-built chimneys |
| - ULC Standard S632 | -> | Heat shields |
| - ULC Standard S635 | -> | Lining systems for existing chimneys |
| - ULC Standard Can/ULC S639 | -> | Steel fireplace liners |
| - ULC Standard Can/ULC S640 | -> | Liners for new chimneys |
| - ULC Standard S641 | -> | Flue pipes |
| - The authority having jurisdiction | -> | Yukon Government or City of Whitehorse |

Regulations

C. Product Certification: Solid Fuels

1. There are 4 recognized testing and certification agencies
 - a) Underwriters' Laboratories of Canada
 - b) Canadian Standards Association
 - c) Warnock Hersey
 - d) Omni Test Laboratories (OTL)
2. A product is not certified unless the label is attached
3. If a certified appliance or equipment is altered in any way, its certification becomes invalid



Regulations

E. The Authority having jurisdiction (Yukon)

1. In the Yukon Territory
 - a) Within Whitehorse city limits : City of Whitehorse, Planning & Development Services
 - b) Outside Whitehorse city limits: Yukon Government, Building Safety Branch
2. CSA Standard B365-10, Clause 4.1, Part (k):
 - a) Gives the authority having jurisdiction the discretion within the standard to accept or reject any equipment that does not meet its requirements
 - b) It is up to the regulatory authority whether to accept an unlabelled product



Installation

Solid-fuel-burning Heating System

I. Introduction

Installation of a Solid-Fuel-Burning Heating System

STEPS:

1. Select the best location in the dwelling to install the appliance and/or chimney
2. Obtain a building permit from the authority having jurisdiction
3. Make sure every appliance is certified and EPA approved
4. Make sure the chimney and all its components are certified
5. Inspect every component to notice any damage and to ensure their integrity
6. Install every component as per
 - a) the manufacturer's *Certified* installation instructions;
 - b) CSA Standard B365-10 and current National Building Code;
 - c) the authority having jurisdiction.

Installation - Chimneys

II. Chimneys

A. The chimney must be selected according to the appliance's installation instructions

1. Type
2. Size

B. The chimney must be Certified



C. If the appliance is already in place, before proceeding, you must ensure that

1. it is installed as per the manufacturer's installation instructions and CSA Standard B365-10?
2. it is in acceptable operating condition?

No
certification
label



Firebox highly deteriorated



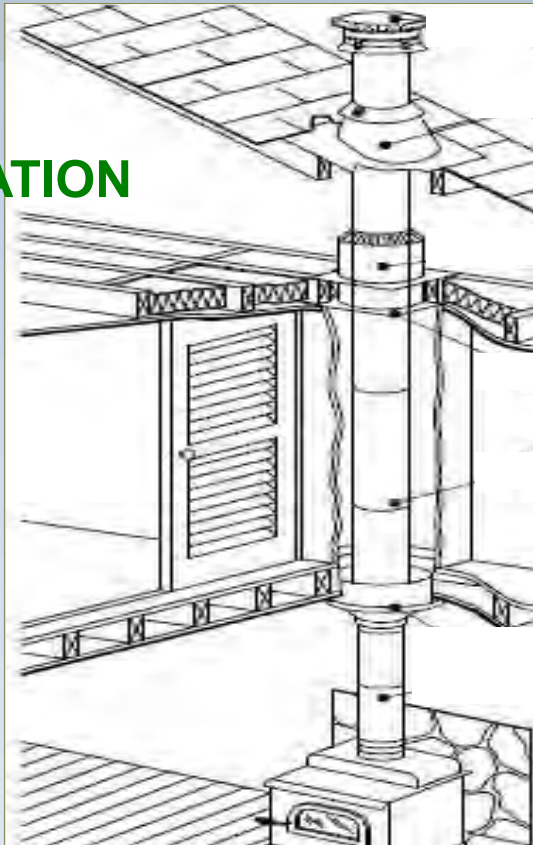
Cracked wood stove

Installation - Chimneys

D. Find the most suitable chimney location:

1. As straight as practicably possible = Avoid offsets
(including flue pipes)

**IDEAL
INSTALLATION**



**AVOID
OFFSETS**



Installation - Chimneys

2. Run the chimney inside the dwelling whenever possible

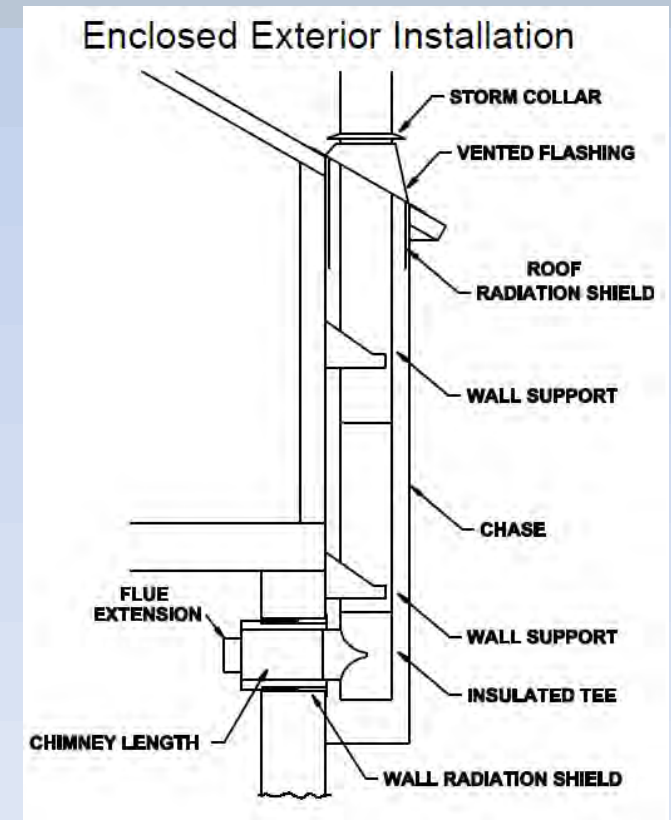
**AVOID
EXTERIOR
CHIMNEYS**



**NEW EXTERIOR CHIMNEY INSTALLATIONS
MUST BE INSIDE AN INSULATED CHASE WHICH
MUST BE PART OF THE BUILDING ENVELOPE**

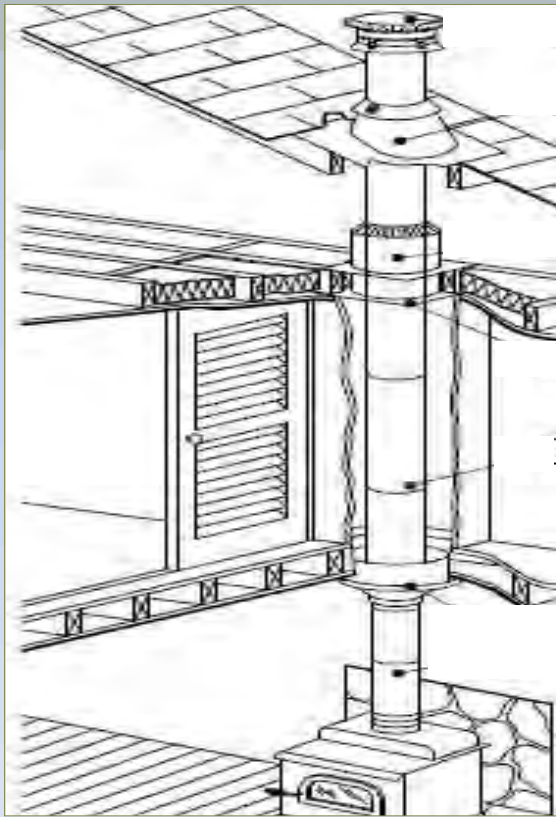


Insulated Chase



Installation - Chimneys

3. Run as little of the chimney outside as possible
 - a) Helps prevent chimney fires
 - b) Helps avoid damage from wind, sliding snow and ice



Preferable location



Preferable location



Exposed to wind
& cold

Installation - Chimneys

4. An appliance located in a **basement** should not be served by an outside chimney:
 - a) Winter depressurization + cold chimney = flow reversal/draft problems
 - b) Soot removal difficult due to low base

5. Never route a chimney around an **eave**



**NON
COMPLIANT**

www.stovefittersmanual.co.uk

Never go around
an eave



Should be avoided
and must have
insulated chase...

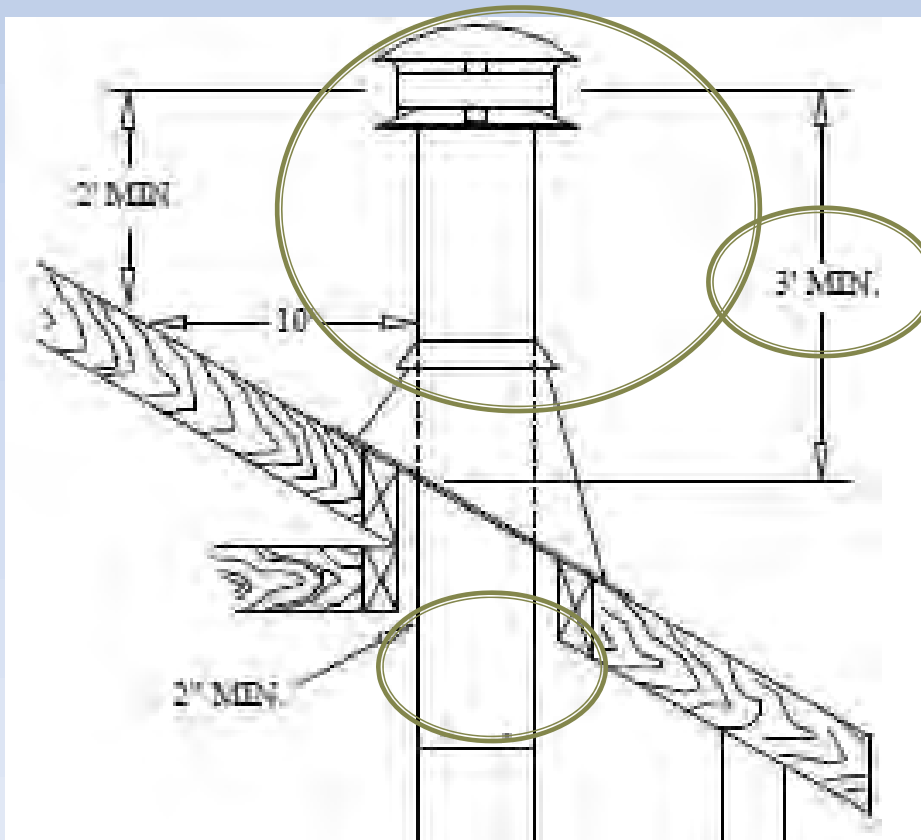
Installation - Chimneys

E. Install as per the manufacturer's installation instructions

1. Height **above the roof**

- Must extend 3' above the highest point of the roof that it penetrates.
- Must be at least 2' above any roof, wall or adjacent building within a horizontal distance of 10'

2. Maintain a **2" clearance** to any combustible material



Less than required clearance

Installation - Chimneys

➤ *Unsafe practices are common:*

- Clearances to combustible material not respected.
- Insulation comes in contact with the chimney.



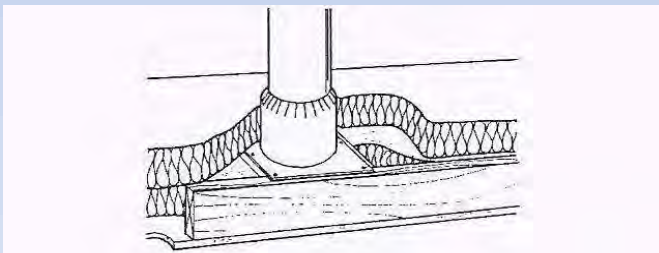
Non-compliant clearances & insulation in contact with chimney



Wood & insulation heated and blackened by heat from chimney

Installation - Chimneys

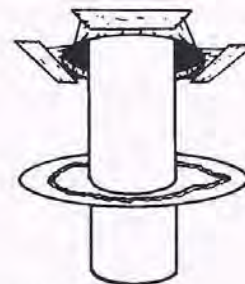
3. In outside installations, use enough **support braces** in the right location
4. Use **fire stops** at all penetration points (wall, ceiling, eavesthrough,...
5. Keep **insulation away from the chimney** using certified components
6. **Blown in insulation** has become more common:
 - a) Must be kept away from chimneys: factory-built and masonry
 - b) Several house fires have been caused by excessive loose insulation piled against the chimney or attic insulation shields
7. **Vapor barriers** must be sealed properly to avoid condensation that leads to leakage



ATTIC RADIATION SHIELD

Attic insulation can be piled against an attic radiation shield without leading to overheating. Insulation should be kept 50 mm (2") below the top of the shield.

WETT Reference Manual



SEALING AIR/VAPOUR BARRIERS

When the building envelope is penetrated by a chimney, the air/vapour barrier must be resealed to prevent air leakage and condensation in the attic. Draw the edges of the plastic air barrier through the chimney hole and tape it to the ceiling with red builder's tape. Then put a bead of acoustical sealant on the flange of the firestop and fasten it to the ceiling. Finally, run a bead of silicone sealant between the surface of the chimney and the firestop.

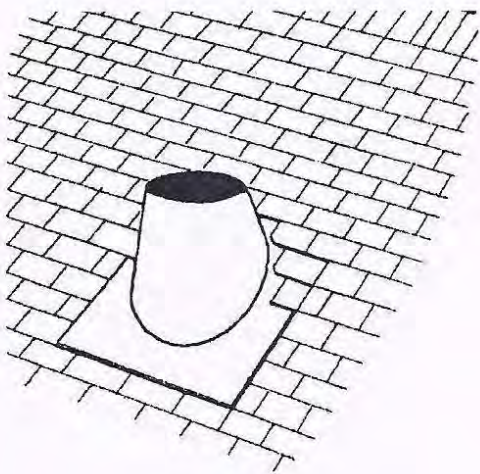
WETT Reference Manual



Support Braces & Fire Stop

Installation - Chimneys

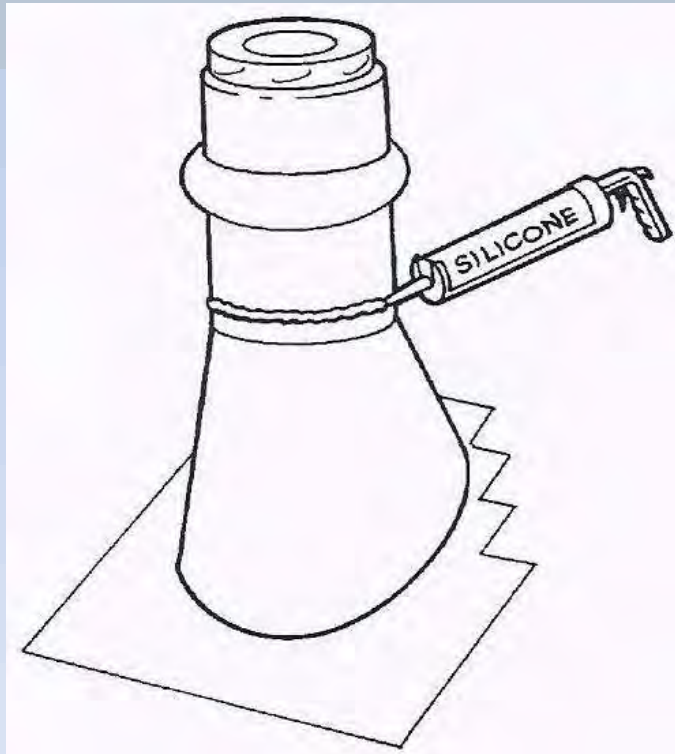
9. Select the correct **flashing/storm collar** for the roof covering and angle. Install properly to prevent leaks (damage to dwelling and chimney). Also, advise customer of maintenance required.
10. Install **roof braces** if the chimney extends more than 5' above the roof



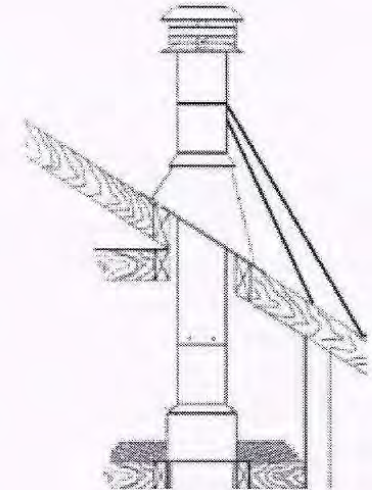
THE FLASHING INSTALLATION

The upper half of the flashing plate is tucked under the roofing material and the lower half lies over the roofing material. The flashing should not be screwed to the roof until the chimney sections are installed. This allows slight adjustments in position to be made.

WETT Reference Manual



WETT Reference Manual



CHIMNEY BRACES

Most models of factory built chimney require bracing if the chimney extends more than 60 mm (5') out of the roof.

WETT Reference Manual

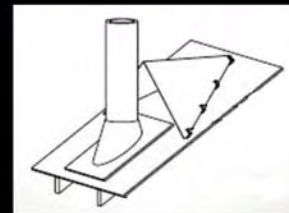
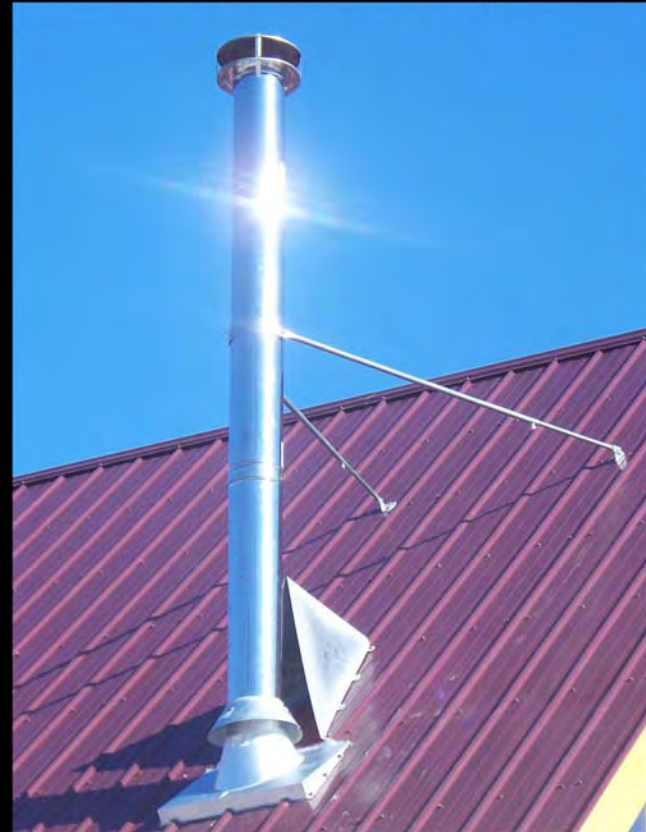
Installation - Chimneys

We recommend the use of crickets



Avoid using snow stops -
Use of a Cricket is highly recommended

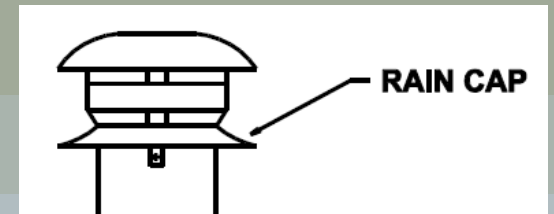
Cricket or Snow-Edge



Installation - Chimneys

13. A **rain cap** must be installed on every chimney

1. Must select the right type of rain cap
2. Must be of quality
3. Should not be removed



Installation - Chimneys



Chimney without a rain cap - Rusted



Chimney without a rain cap
– Inside liner twisted closed

Installation - Chimneys

Appears in acceptable
operating condition



Inside view of chimney used
without a rain cap - Buckled



Outside view of chimney

Installation - Chimneys



Water infiltration

Appears in acceptable operating condition



Installation - Chimneys

14. A chimney passing through a living space must be **enclosed**



Not enclosed -
Non-compliant



Enclosed -
Compliant

Installation - Chimneys

Not enclosed



Non compliant installation



Not enclosed

Less than 2" clearance

Installation - Chimneys



Compliant



Non
Compliant

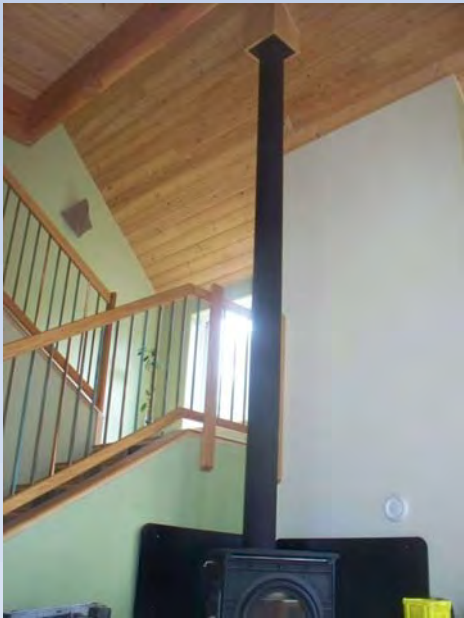


Non Compliant

Installation - Chimneys



Ceiling support –
Not installed as per
manufacturer's
instructions



Bent chimney –
Not installed as per
manufacturer's instructions

Installation – Solid-Fuel-Burning Appliances

I. Solid-Fuel-Burning Appliances

A. Make sure the homeowner selects the proper appliance

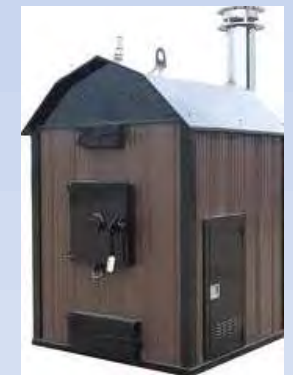
1. Type
2. Heat output
3. Certified & EPA approved
4. Location in the dwelling
5. Certified for mobile homes



Wood
Furnace



Factory-Built
Fireplace



Outside
wood
boiler



Wood Stove



Hearthmount
Stove



Fireplace
Insert



Pellet Stove

and more...

Installation – Solid-Fuel-Burning Appliance

B. If a chimney is already in place

1. Is the chimney approved by the manufacturer for the appliance selected?
2. Is the chimney the correct size for the appliance selected?
3. Is it installed as per the manufacturer's installation instructions?
4. Is the chimney in acceptable operating condition?
 - a) Do not be fooled by the exterior appearance of a chimney!
 - b) Have it swept and inspected by a WETT Certified Chimney Sweep
5. Do not connect the solid-fuel-burning appliance to a chimney serving another appliance (*unless authorized by the manufacturer in the installation instructions*).



Deteriorated chimney

Seams coming apart

Installation – Solid-Fuel-Burning Appliances

C. Appliance certification

1. The **manufacturer's certification label** must be attached to the back of the appliance and must be legible
2. If the manufacturer's label is not attached, the appliance is considered **uncertified**
3. Only the authority having jurisdiction can approve the installation of an uncertified appliance



Manufacturer's Certification Labels

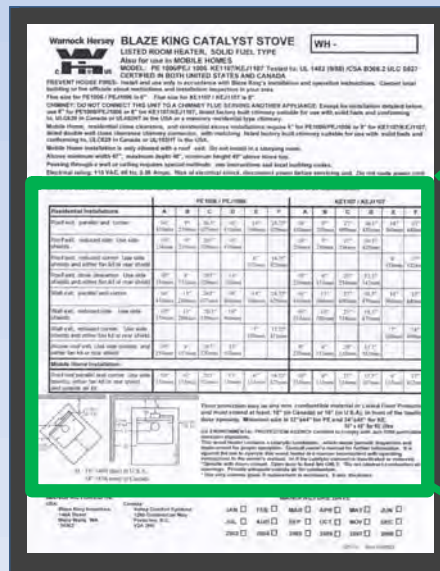
Uncertified Appliance

Installation – Solid-Fuel-Burning Appliance

D. Install as per the manufacturer's installation instructions

1. Clearances to combustibles

- Refer to the Manufacturer's **label** at the back of the appliance
- If the Manufacturer's label or installation instruction do not state the **top/ceiling clearance**, use the one for uncertified appliances or the height of the enclosure it was tested in by the listing company
- A clear space of 48" is required in **front** of a loading door of any wood burning appliance



Manufacturer's Label

MINIMUM CLEARANCES TO COMBUSTIBLES (See owners manual for complete description of all requirements)

Residential Installations	PE1006 / PEJ1006						KE1107 / KEJ1107					
	A	B	C	D	E	F	A	B	C	D	E	F
Roof exit, parallel and corner	16" 410mm	9" 230mm	26.5" 675mm	16" 410mm	14" 360mm	24.75" 629mm	16" 410mm	9" 230mm	27" 690mm	16.5" 420mm	14" 360mm	25" 640mm
Roof exit, reduced side Use side shields	10" 254mm	9" 230mm	20.5" 520mm	16" 410mm			10" 254mm	9" 230mm	21" 534mm	16.5" 420mm		
Roof exit, reduced corner Use side shields and either fan kit or rear shield					6" 153mm	16.75" 425mm					6" 153mm	17" 432mm
Roof exit, close clearance Use side shields and either fan kit or rear shield	10" 254mm	6" 153mm	20.5" 520mm	13" 330mm			10" 254mm	6" 153mm	21" 534mm	13.5" 343mm		
Wall exit, parallel and corner	16" 410mm	11" 280mm	26.5" 675mm	18" 460mm	14" 360mm	24.75" 629mm	16" 410mm	11" 280mm	27" 690mm	18.5" 470mm	14" 360mm	25" 640mm
Wall exit, reduced side Use side shields	10" 254mm	11" 280mm	20.5" 520mm	18" 460mm			10" 254mm	11" 280mm	21" 534mm	18.5" 470mm		
Wall exit, reduced corner Use side shields and either fan kit or rear shield					7" 180mm	17.75" 451mm					7" 180mm	18" 460mm
Alcove roof exit. Use side shields, and either fan kit or rear shield	10" 254mm	6" 153mm	20.5" 520mm	13" 330mm			9" 230mm	6" 153mm	20" 510mm	13.5" 343mm		
Mobile Home Installation												
Roof exit parallel and corner Use side shields, either fan kit or rear shield and outside air kit	10" 254mm	6" 153mm	20.5" 520mm	13" 330mm	6" 153mm	16.75" 425mm	10" 254mm	6" 153mm	21" 534mm	13.5" 343mm	6" 153mm	17" 432mm

H - 16" (406 mm) in U.S.A.
18" (456 mm) in Canada

Floor protection may be any non combustible material or Listed Floor Protector, and must extend at least, 18" (in Canada) or 16" (in U.S.A.), in front of the loading door opening. Minimum size is 32"x44" for PE and 34"x45" for KE.
35" x 45" for KE Ultra

US ENVIRONMENTAL PROTECTION AGENCY: Certified to comply with July 1990 particulate emission standards.

This wood heater contains a catalytic combustor, which needs periodic inspection and replacement for proper operation. Consult owner's manual for further information. It is against the law to operate this wood heater in a manner inconsistent with operating instructions in the owner's manual, or if the catalytic element is deactivated or removed.

*Operate with doors closed. Open door to feed fire ONLY. *Do not obstruct combustion air openings. Provide adequate outside air for combustion.

* Use only ceramic glass if replacement is necessary, 5 mm. thickness

Installation – Solid-Fuel-Burning Appliances



Non-compliant installation -
Clearances

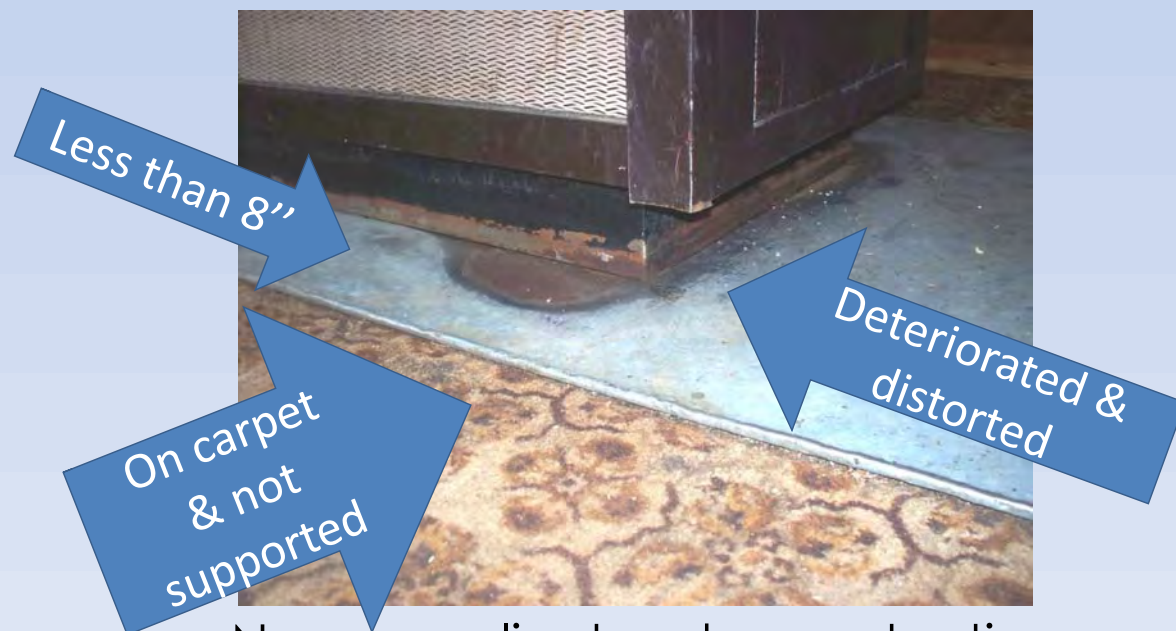
Installation – Solid-Fuel-Burning Appliance

2. Floor protection

- a) Most certified appliances do not require protection from radiant heat (*always follow the certified instructions*)
- b) All appliances require a **floor pad** to protect combustible floors from falling ember
 - i. It must extend at least 18'' beyond any side having a loading door
 - ii. It must extend at least 8'' beyond other sides and rear
 - iii. It must be a continuous, non-combustible surface
 - iv. Cannot be placed on top of a carpet unless it is structurally supported to prevent displacement and distortion



Less than 18'' in front



Non-compliant ember protection

Installation – Solid-Fuel-Burning Appliance



Non-compliant ember protection

Installation – Solid-Fuel-Burning Appliances

3. Clearance reduction

1. Heat shields can be used to reduce clearances as per manufacturer's installation instructions or CSA Standard B365-10
 - a) Wall protection must be separated at least 7/8" from the combustible material by non-combustible spacers
 - b) Edges must be left open to allow for air flow
 - c) Only approved material can be used as heat shields



Non-compliant spacer



Non-compliant shield



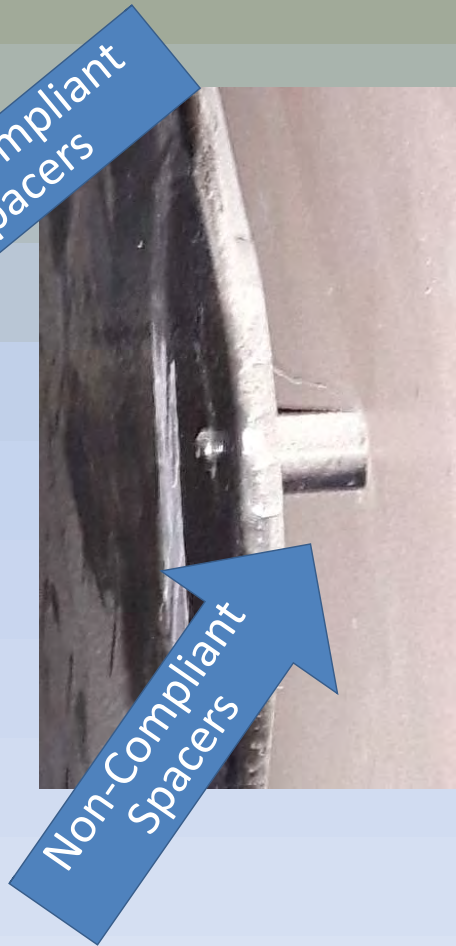
No air flow



Less than 1"

Combustible behind shield

Installation – Solid-Fuel-Burning Appliances



Non-compliant

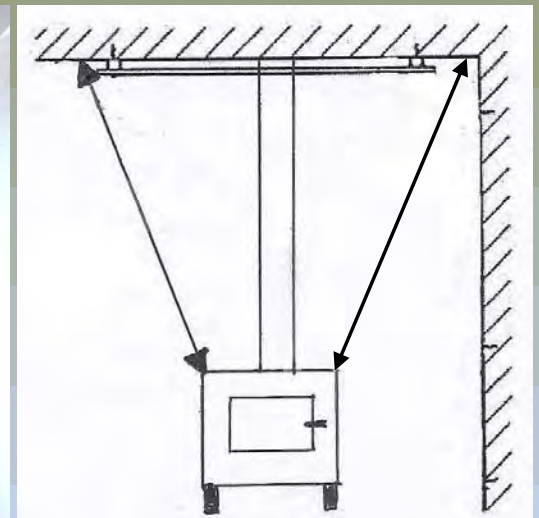
Installation – Solid-Fuel-Burning Appliance



Combustible surface not covered



Not sized properly



No clearance at bottom



Not sized properly



compliant

Non-compliant heat shields

Installation – Solid-Fuel-Burning Appliance



Non-compliant heat shields

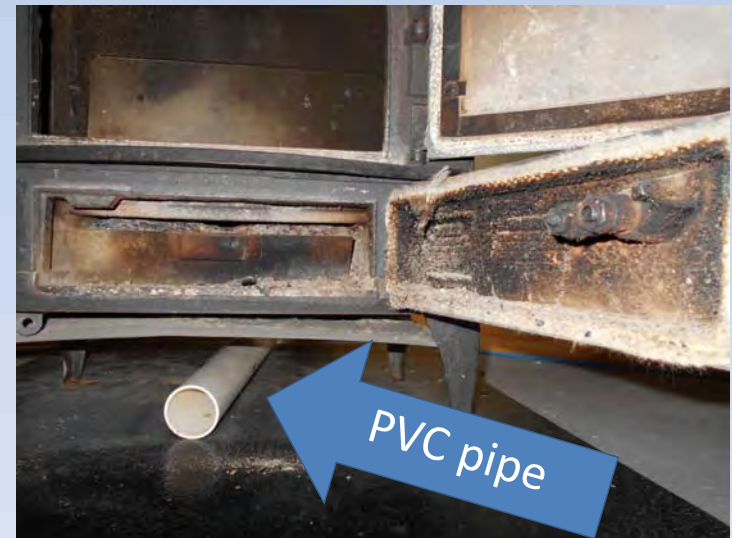
Installation – Solid-Fuel-Burning Appliances

3. Outdoor combustion air

1. Must be installed as prescribed in CSA Standard B365-10
2. Must be installed when required by the appliance manufacturer and must be connected directly to the air inlet of the appliance
3. Must be installed when results of pressure tests warrant it (*CAN/CGSB 51.71*)
4. Must be installed when the authority having jurisdiction requires one



Compliant



Non Compliant

Installation – Flue pipes

A. Select the flue pipes (or connectors)

1. Single-walled or double-walled



a) Single-walled

- i. Radiated heat from the pipe
- ii. Inexpensive
- iii. Short life span
- iv. A clearance of 18” is always necessary
- v. Must be made of steel meeting Code requirements (No galvanized or blue steel)
- vi. Must be installed as per CSA Standard B-365-10

b) Double-walled

- i. Certified
- ii. More expensive than single-walled
- iii. Last much longer
- iv. Retain flue gas heat and keep the chimney warmer
- v. Clearances can be as low as 6”
- vi. Must be installed as per manufacturer’s Certified installation instructions



WARNOCK HERSEY  INDUSTRIAL CHIMNEY COMPANY INDUSTRIELLES CHIMNÉES	 UP	
FACTORY-BUILT CHIMNEY CONNECTOR TUYAU DE RACCORDEMENT MODEL/MODELE: UBF		
MINIMUM CLEARANCE TO COMBUSTIBLE CONSTRUCTION: DEGAGEMENT MINIMAL AUX MATIERES COMBUSTIBLES 6"		
INSTALL IN ACCORDANCE WITH ICC INSTALLATION INSTRUCTIONS. FOR CONNECTION TO GAS, OIL AND SOLID FUEL BURNING APPLIANCES NORMALLY PRODUCING FLUE GASES OF 650 °C OR LESS. CAUTION DO NOT ENCLOSE. THIS CONNECTOR MUST NOT PASS THROUGH FLOORS OR CEILINGS. PASSAGE THROUGH WALLS IS NOT PERMITTED EXCEPT AS DETAILED IN THE INSTALLATION INSTRUCTIONS.		
INSTALLER SELON LES INSTRUCTIONS D'INSTALLATION DE ICC. POUR RACCORDEMENT A DES APPAREILS AU GAZ, A L'HUILE ET AU BOIS PRODUISANT DES TEMPERATURES D'EVACUATION DE 650 °C OU MOINS. AVERTISSEMENT CE TUYAU DE RACCORDEMENT NE DOIT PAS: 1 TRAVERSER PLANCHERS & PLAFONDS. 2 TRAVERSER MURS SAUF SI PERMIS AUX INSTRUCTIONS D'INSTALLATION. 3 ETRE RECOUVERT.		
ICC INDUSTRIAL CHIMNEY COMPANY INC. ICC COMPAGNIE DE CHIMNÉES INDUSTRIELLES INC. ST-JEROME, QUEBEC, CANADA		MADE IN CANADA

Installation – Flue pipes

A. Design the flue pipes

1. Must be the diameter of the appliance flue collar
2. As straight and short as practicably possible
3. Avoid 90° elbows
4. Must be made mechanically secure with at least 3 screws except for the expansion joint when vertical or unless otherwise mentioned by manufacturer's certified instructions



Installation – Flue pipes



Improved Designs



Increased risk of chimney fires

Installation – Flue pipes

5. Must not pass through a floor, ceiling, attic space, roof space, closet or any other concealed space
6. Must allow for expansion and have provision for inspection and cleaning
7. Clearances may be reduced using heat shields
8. Joints must not be covered by any material



Installation – Flue pipes



Non-compliant installation



Non-compliant installation

Installation – Oil-Fired Appliances

- **IMPORTANT**

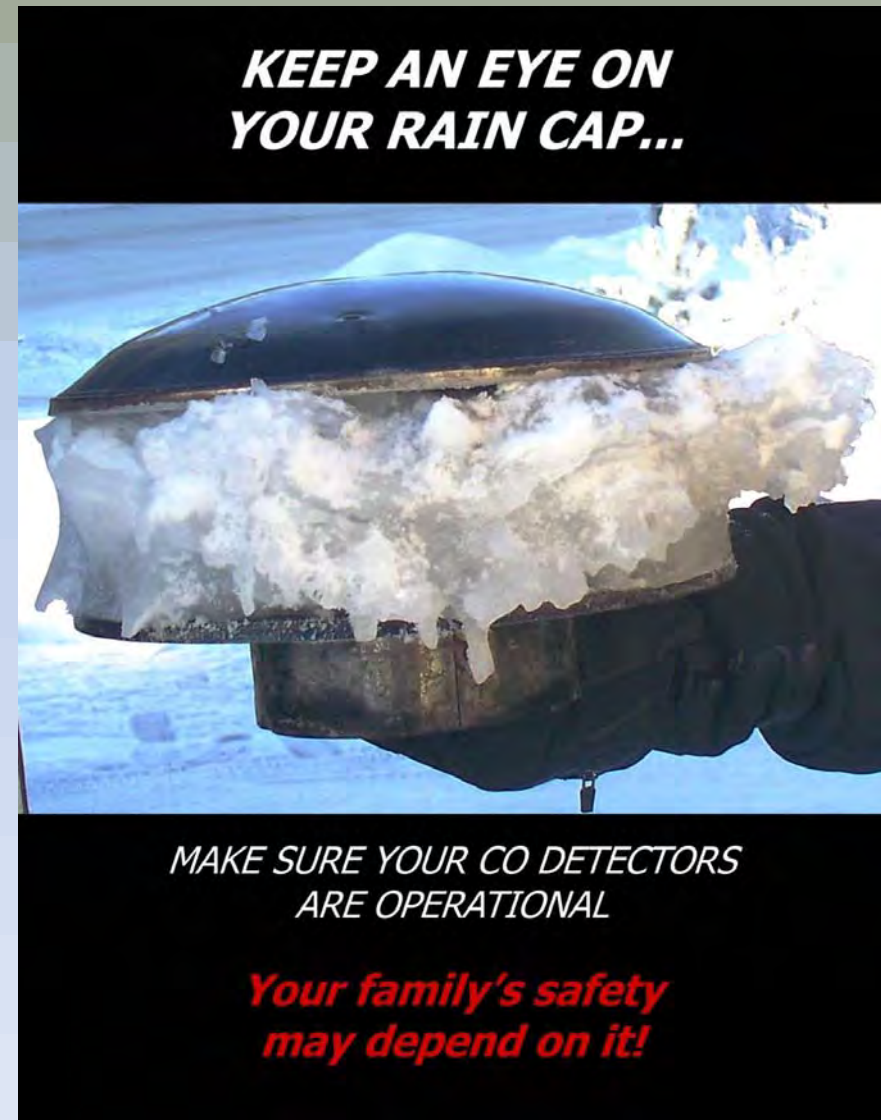
Access for inspection and maintenance



Installation – Oil-Fired Appliances

New High Efficiency Oil-Fired Appliances

New high efficiency oil-fired appliances do not keep the chimney warm enough...



Chimney Liners

A. Overview

1. The liner, rigid or flexible, must be certified for the intended use
2. The soot and/or creosote must be removed from the chimney as per the manufacturer's certified installation instruction
3. The chimney must be inspected prior to the installation as per the manufacturer's certified installation instruction
4. The chimney must be deemed in acceptable condition to receive a liner



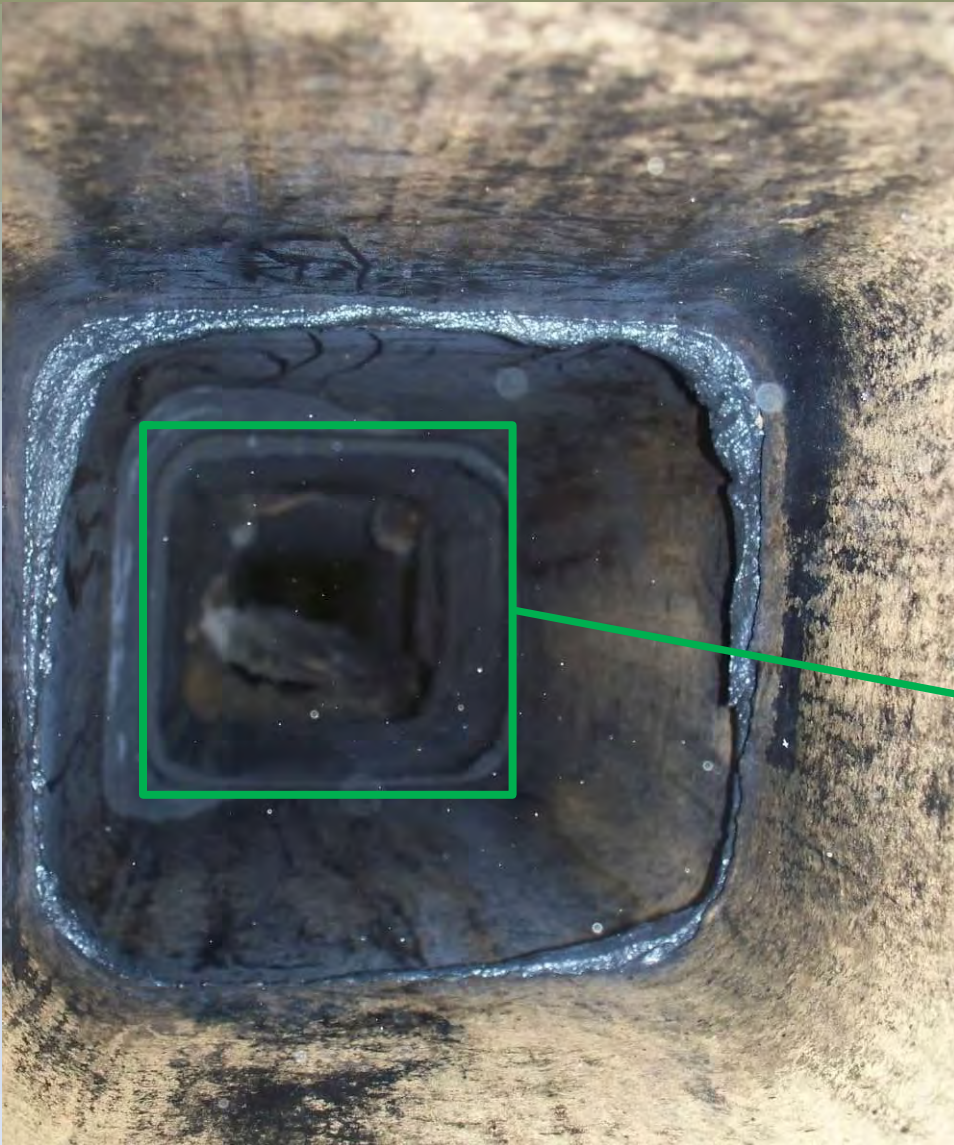
Chimney Liners

B. Common unsafe practices

1. Quick fix - Cost efficient
2. Not installed properly
3. Sometimes installed where not appropriate
4. Chimney not swept and not inspected prior to installation



Chimney Liners



Clay liners inside brick chimneys
deteriorated & cracked by water infiltration

Chimney Liners



Cracked liner and outer shell -
Lost its structural integrity

Chimney Liners



Clay liners inside brick chimneys deteriorated & cracked by water infiltration

Soot/Creosote

B. Important factors in creosote accumulation:

1. Weather
2. Humidity content of the wood
3. **New high efficiency wood stoves**
4. Burning other than newspaper and dry wood
(it also clogs catalytic combustors)



Soot/Creosote

5. Burning smoldering fires
6. Use of wax or accelerant to start a fire
7. Using wood furnaces equipped with a thermostat during mild weather



Soot/Creosote Removal

C. Removal of soot and creosote

1. Solid-Fuel (Wood)

a) When?

- i. Any time creosote reaches $\frac{1}{4}$ " thick
- ii. After any suspected chimney fire
- iii. After a period of warm weather and before a cold snap



Result of burning beer boxes...



Result of starting fires with wax...

Soot/Creosote Removal

b) Why?

- i. To prevent chimney fires, destruction of property and loss of life
- ii. To comply with the **Fire Code**
 - 2.6.1.4 (1)** *Every chimney, flue and flue pipe shall be inspected to identify any dangerous condition:*
 - a. *at intervals not greater than 12 months*
 - b. *at the time of addition of any appliance*
 - c. *after any chimney fire.*
 - 2.6.1.4 (2)** *Chimneys, flues and flue pipes shall be cleaned as often as necessary to keep free from accumulation of combustible deposits.*
 - A-2.6.1.4 (2)** *The presence in a chimney of soot or creosote in excess of 3mm thick will indicate the need for immediate cleaning, possible modification of burning procedures, and more frequent inspections.*
- iii. To comply with home insurance company requirements
- iv. To comply with the appliance and chimney manufacturers' instructions
- v. **To comply with Landlords and Tenants Act and Regulations**

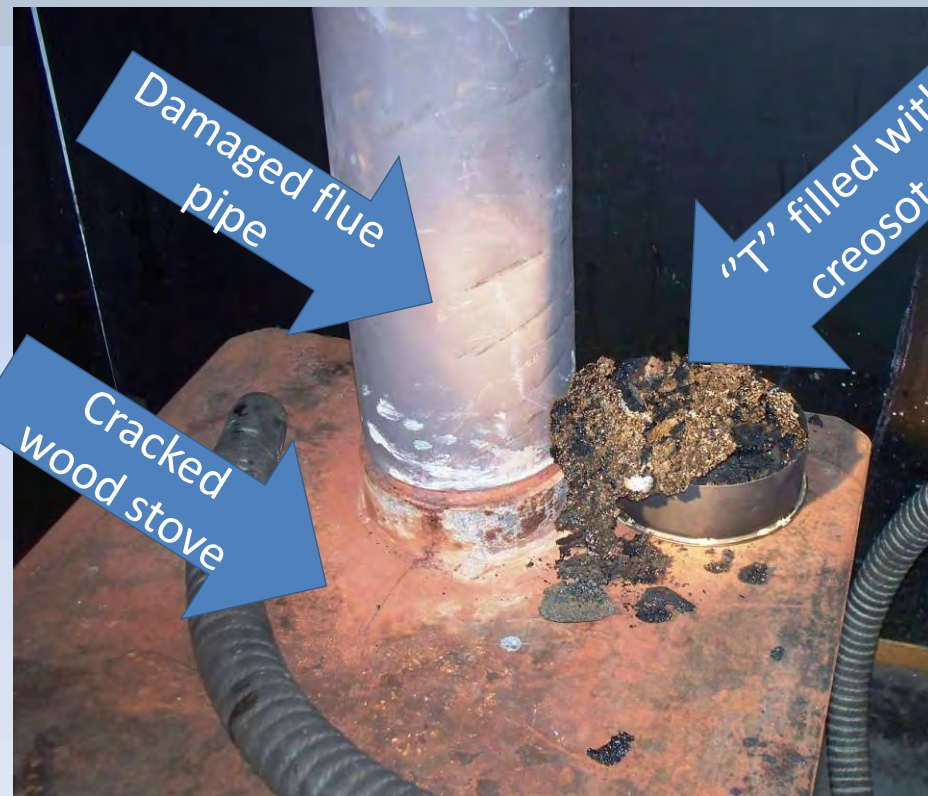
Soot/Creosote Removal

C. Unsafe practices

1. Homeowners make the assumption that their chimney is clean
2. Homeowners wait until their wood-burning appliance does not operate well to call for a professional chimney sweep service
3. DIYers often do not sweep the most important parts or use the right equipment



Chimney not swept by a professional



Chimney not swept by a professional

Soot/Creosote Removal

- **Outside wood boilers** must be maintained but are often neglected



Outside wood boiler destroyed by fire

Soot/Creosote Removal Oil-Fired Appliances

2. Oil-Fired Appliance & Chimney Soot removal



Forced Air Oil Furnace



Boiler

Oil-Fired
Hot Water
Tank



Waste Oil Furnace



Commercial system

Soot/Creosote Removal Oil-Fired Appliances

a) When?

- i. Any time creosote reaches $\frac{1}{4}$ " thick in the chimney or heat exchanger
- ii. When soot particles are found on and around the appliance
- iii. Approximately every 3 to 5 years for better efficiency
- iv. Preceding an annual service by a qualified oil-burner mechanic

(The National Building Code requires maintenance of oil-fired appliances at least once per year.) See B139-04 Section 14.2



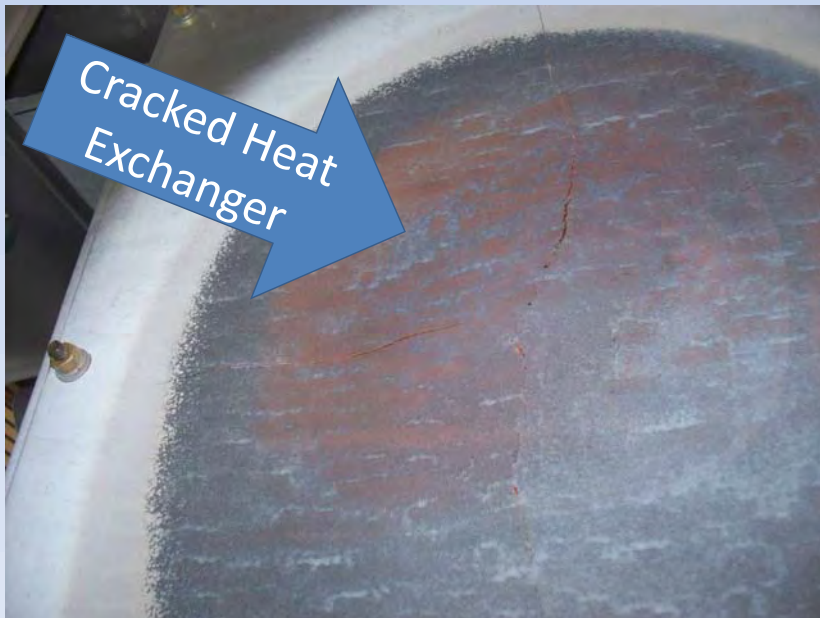
Soot particles

Soot particles
on barometric
damper
or top of
furnace

Soot/Creosote Removal Oil-Fired Appliances

b) Why?

- i. To improve the efficiency of the appliance
- ii. To reduce heating/oil costs (\$\$\$)
- iii. To prevent fires, destruction of property and loss of life
- iv. To comply with the **Fire Code**
- v. To comply with the appliance and chimney manufacturers' instructions
- vi. To comply with Landlords and Tenants Act and Regulations
- vii. Cracked or rusted through heat exchangers are often discovered during soot removal



Soot/Creosote Removal Oil-Fired Appliances



Blocked flue pipe



Heat exchanger



Rusted through



Oil furnace blocked with soot



Flue pipe blocked with soot



Heat exchanger
Waste Oil Furnace

Safety Concerns

CO Detectors



- There are often no CO Detectors and occasionally no Smoke alarms installed
- CO Detectors/Smoke alarms are present but
 - There are not enough detectors installed
 - They are not installed as per the manufacturers instructions
 - No expiry date visible on the unit
 - They have been removed
 - The batteries have been removed

Smoke Alarm



- There is a great lack of concern amongst the population

Safety Concerns

Fire Extinguishers



- There are often no Fire Extinguishers on site
- Fire extinguishers are present but
 - Too small (*Peace of mind!*)
 - Not enough units
 - Expired or not maintained
 - Not located strategically
 - Location unknown
 - Not accessible
 - They just don't know the right or best location to put it in case of an emergency
- There is a great lack of concern amongst the population



Safety Concerns

Ash Removal



Extremely common!

System Design

Location Location Location!

Prevention

Maintenance

Education

Safety is our Priority!



Yukon
Chimney Sweep

Working towards a safer Yukon since 2006

Copyrights Yukon Chimney Sweep. All Rights Reserved