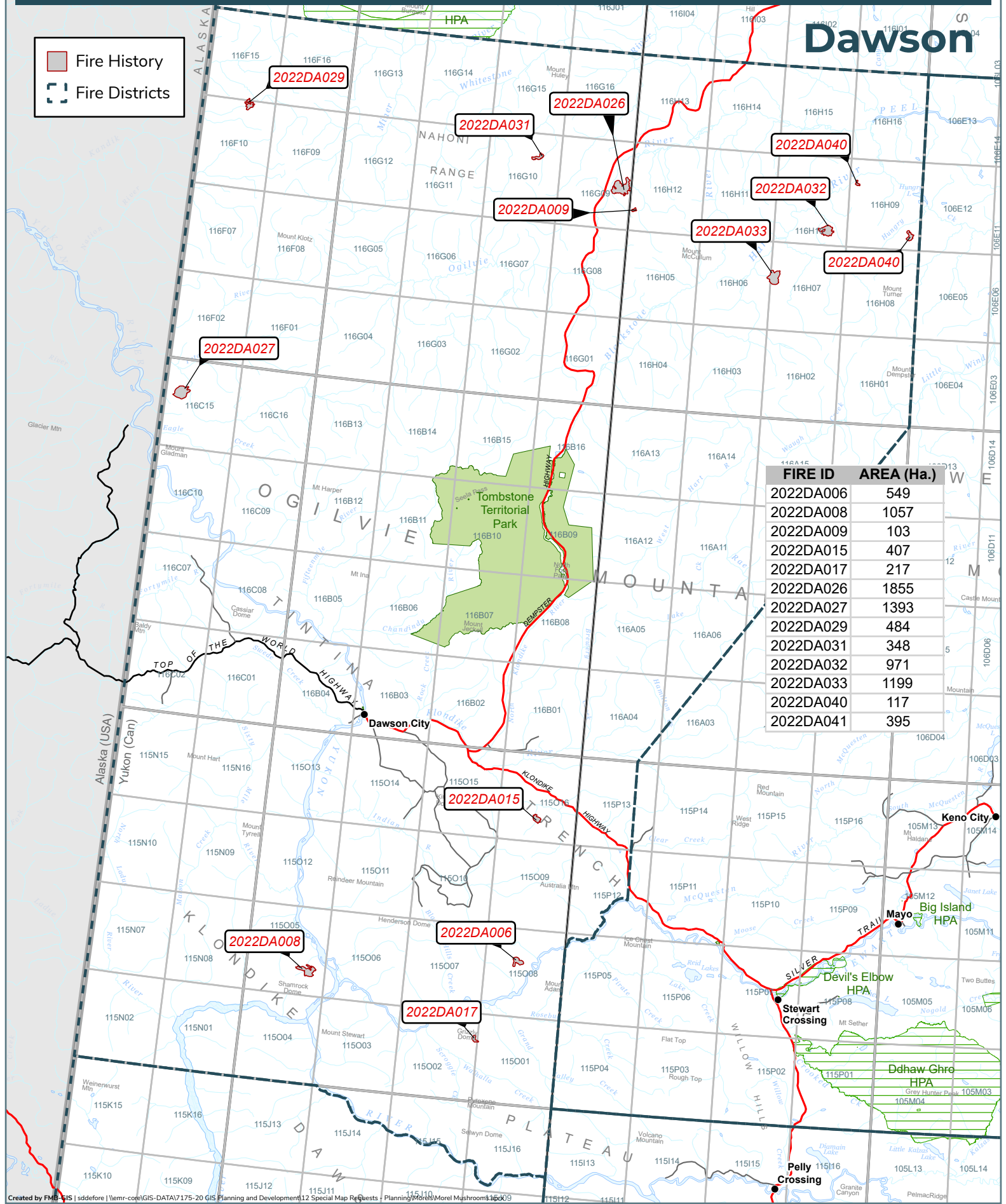


Dawson

■ Fire History
□ Fire Districts



FIRE ID	AREA (Ha.)
2022DA006	549
2022DA008	1057
2022DA009	103
2022DA015	407
2022DA017	217
2022DA026	1855
2022DA027	1393
2022DA029	484
2022DA031	348
2022DA032	971
2022DA033	1199
2022DA040	117
2022DA041	395

2022 Wildland Fires

January 24, 2023

Fire District:
Dawson












2022DA006

Scale: 1:100,000

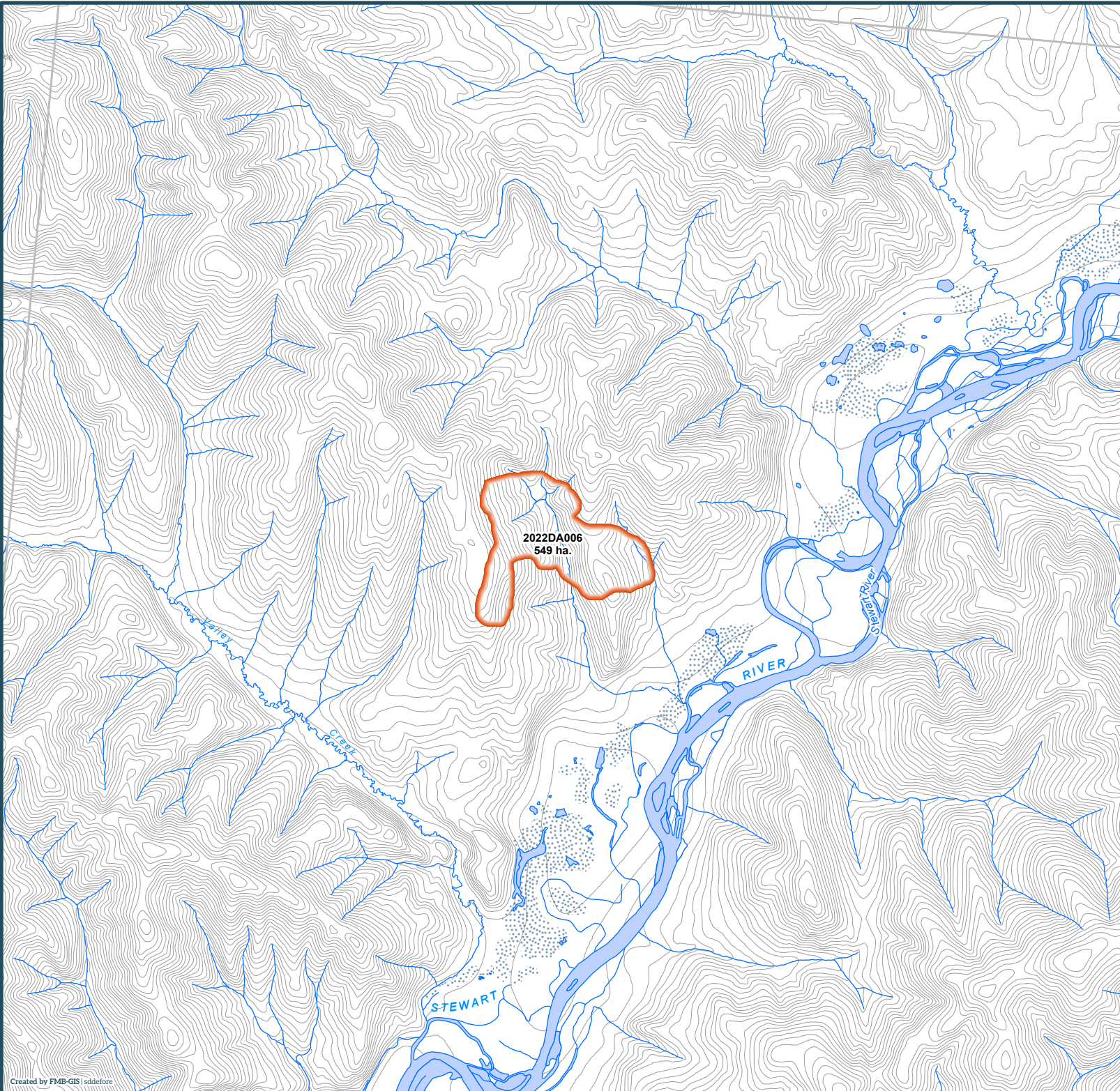
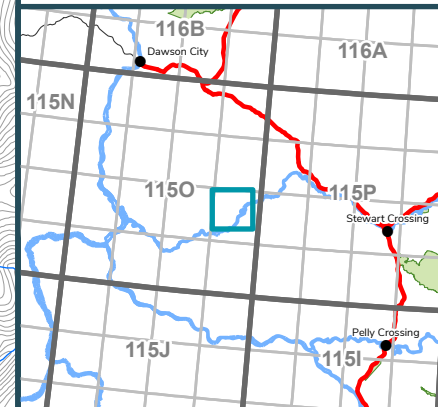


Kilometres

Map Center: 138°17'20"W 63°24'24"N
NAD 1983 Yukon Albers

-  Fire Perimeter
-  Surveyed Land Parcels
-  Easements
-  Land Dispositions
-  Parks and Campgrounds
-  Parks and Protected Areas
-  First Nation Settlement Lands - Surveyed
-  Interim Protected Settlement Lands
-  Rivers & Streams
-  Wetlands
-  Lakes

1:250,000 NTS Map Series Numbers



2022 Wildland Fires

January 24, 2023

Fire District:
Dawson







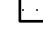




2022DA008

Scale: 1:100,000

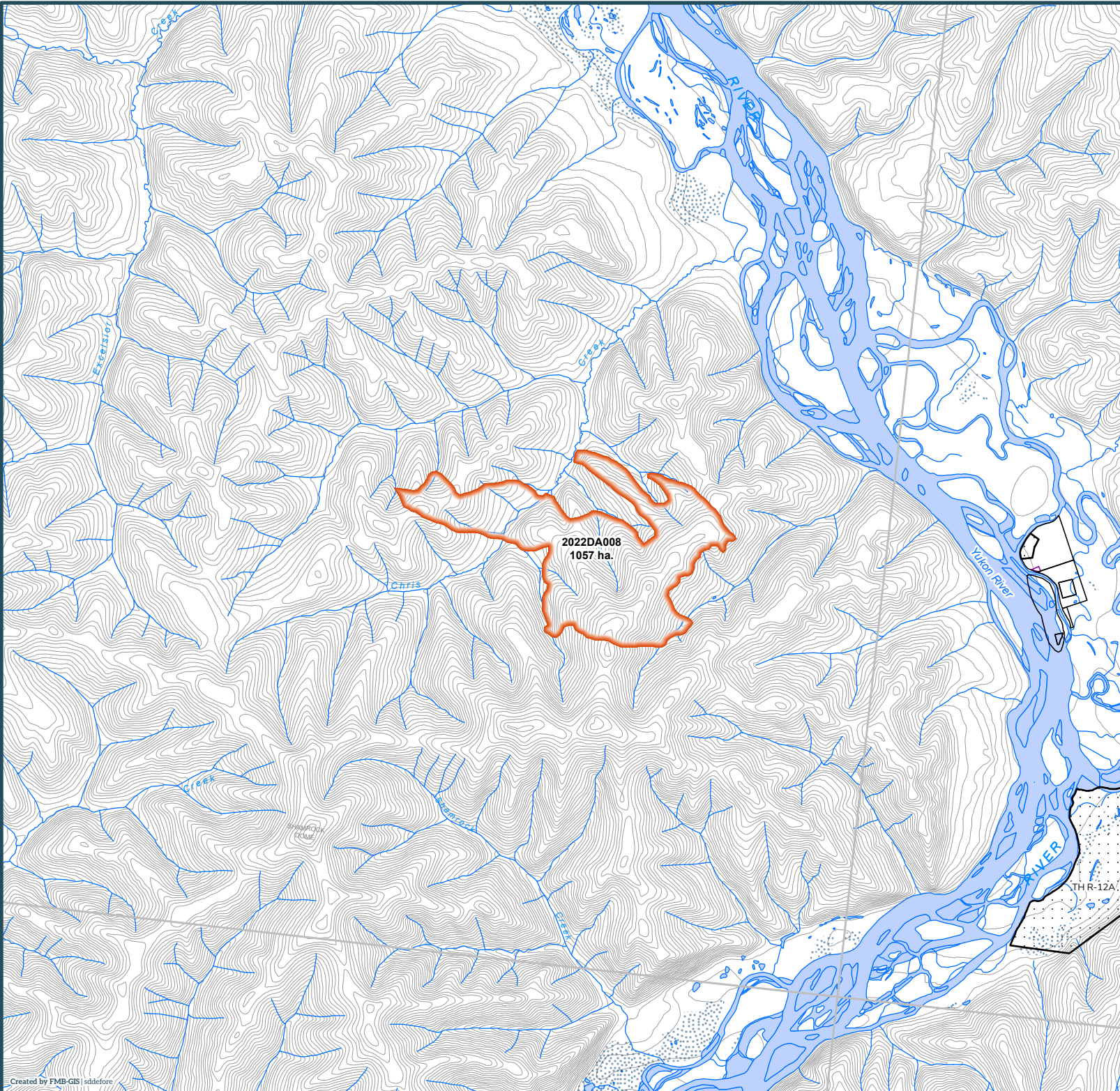
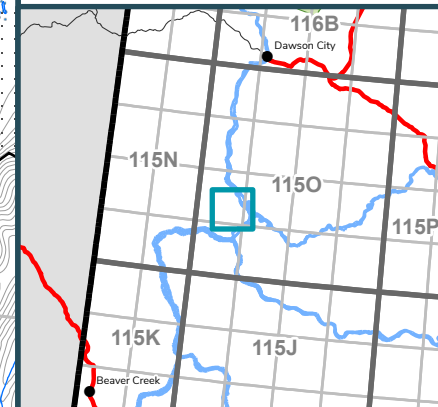


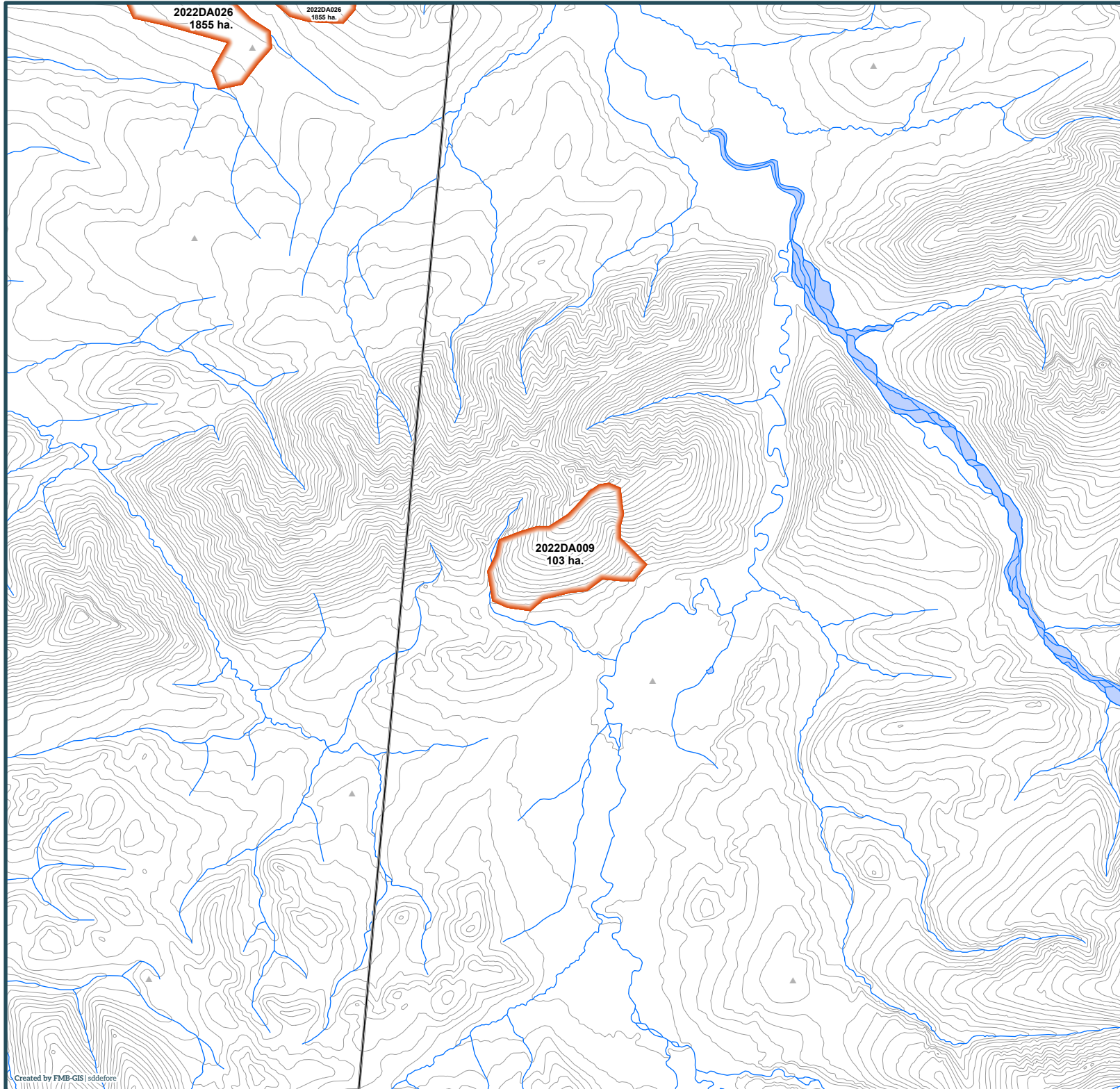
Kilometres

Map Center: 139°37'16"W 63°19'14"N
NAD 1983 Yukon Albers

-  Fire Perimeter
-  Surveyed Land Parcels
-  Easements
-  Land Dispositions
-  Parks and Campgrounds
-  Parks and Protected Areas
-  First Nation Settlement Lands - Surveyed
-  Interim Protected Settlement Lands
-  Rivers & Streams
-  Wetlands
-  Lakes

1:250,000 NTS Map Series Numbers





2022 Wildland Fires

January 24, 2023

Fire District:
Dawson

2022DA009

Scale: 1:50,000

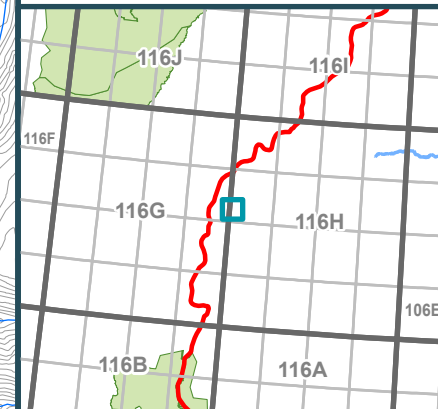


Kilometres

Map Center: 137°58'1"W 65°33'34"N
NAD 1983 Yukon Albers

- Fire Perimeter
- Surveyed Land Parcels
- Easements
- Land Dispositions
- Parks and Campgrounds
- Parks and Protected Areas
- First Nation Settlement Lands - Surveyed
- Interim Protected Settlement Lands
- Rivers & Streams
- Wetlands
- Lakes

1:250,000 NTS Map Series Numbers



2022 Wildland Fires

January 24, 2023

Fire District:
Dawson












2022DA015

Scale: 1:50,000

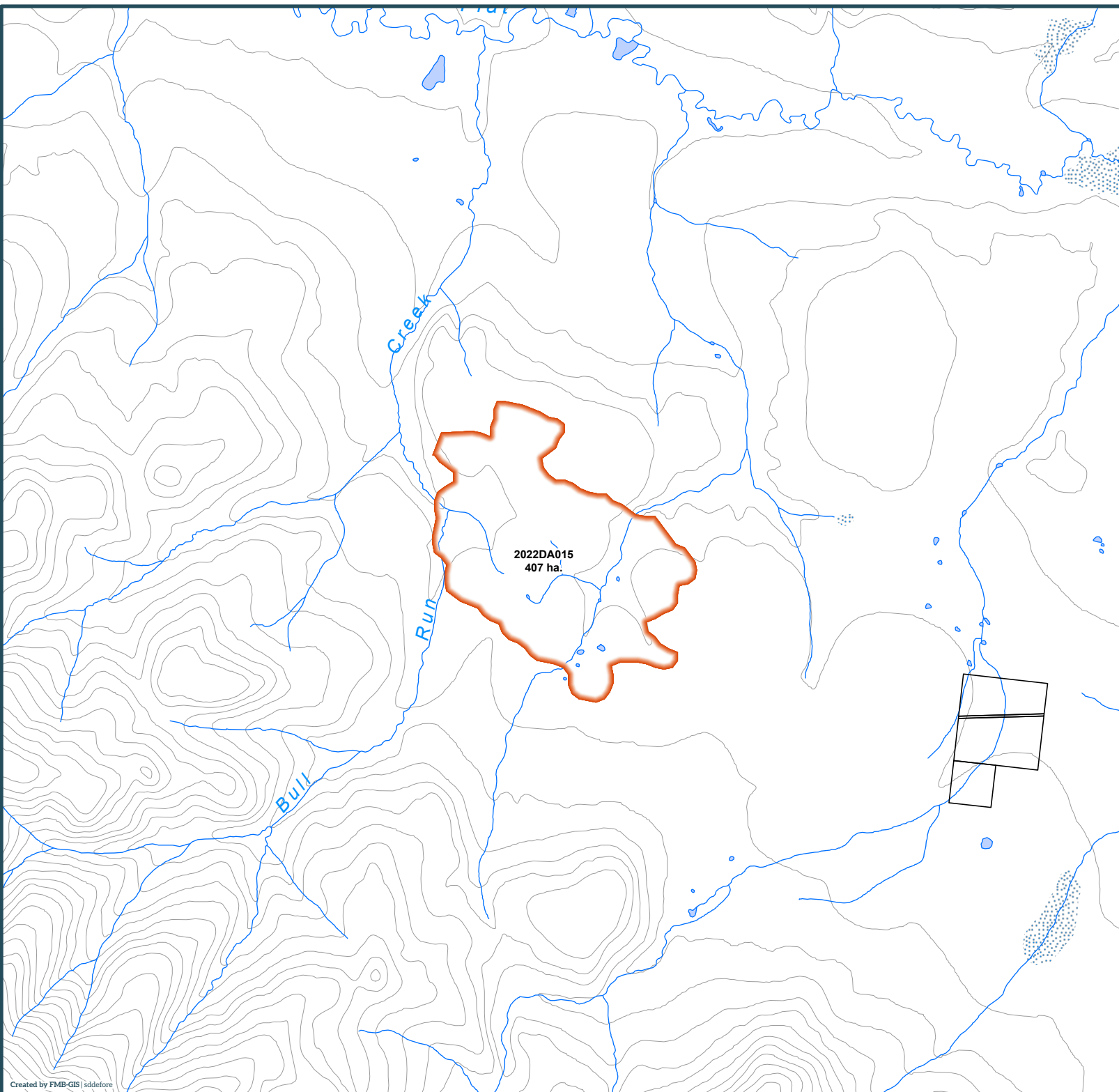
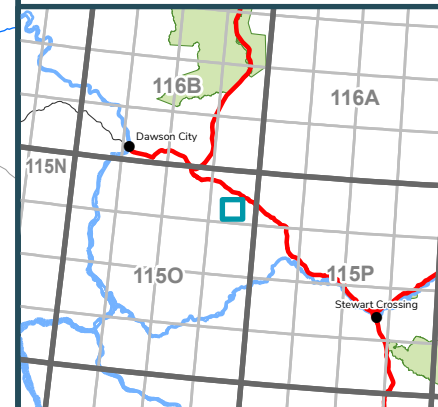


Kilometres

Map Center: 138°15'8"W 63°48'56"N
NAD 1983 Yukon Albers

-  Fire Perimeter
-  Surveyed Land Parcels
-  Easements
-  Land Dispositions
-  Parks and Campgrounds
-  Parks and Protected Areas
-  First Nation Settlement Lands - Surveyed
-  Interim Protected Settlement Lands
-  Rivers & Streams
-  Wetlands
-  Lakes

1:250,000 NTS Map Series Numbers



2022 Wildland Fires

January 24, 2023

Fire District:
Dawson












2022DA017

Scale: 1:50,000



Kilometres

Map Center: 138°30'47"W 63°10'43"N
NAD 1983 Yukon Albers

-  Fire Perimeter
-  Surveyed Land Parcels
-  Easements
-  Land Dispositions
-  Parks and Campgrounds
-  Parks and Protected Areas
-  First Nation Settlement Lands - Surveyed
-  Interim Protected Settlement Lands
-  Rivers & Streams
-  Wetlands
-  Lakes

1:250,000 NTS Map Series Numbers



GRIZZLY
DOME

2022DA017
217 ha.

2022 Wildland Fires

January 24, 2023

Fire District:
Dawson

2022DA026

Scale: 1:100,000

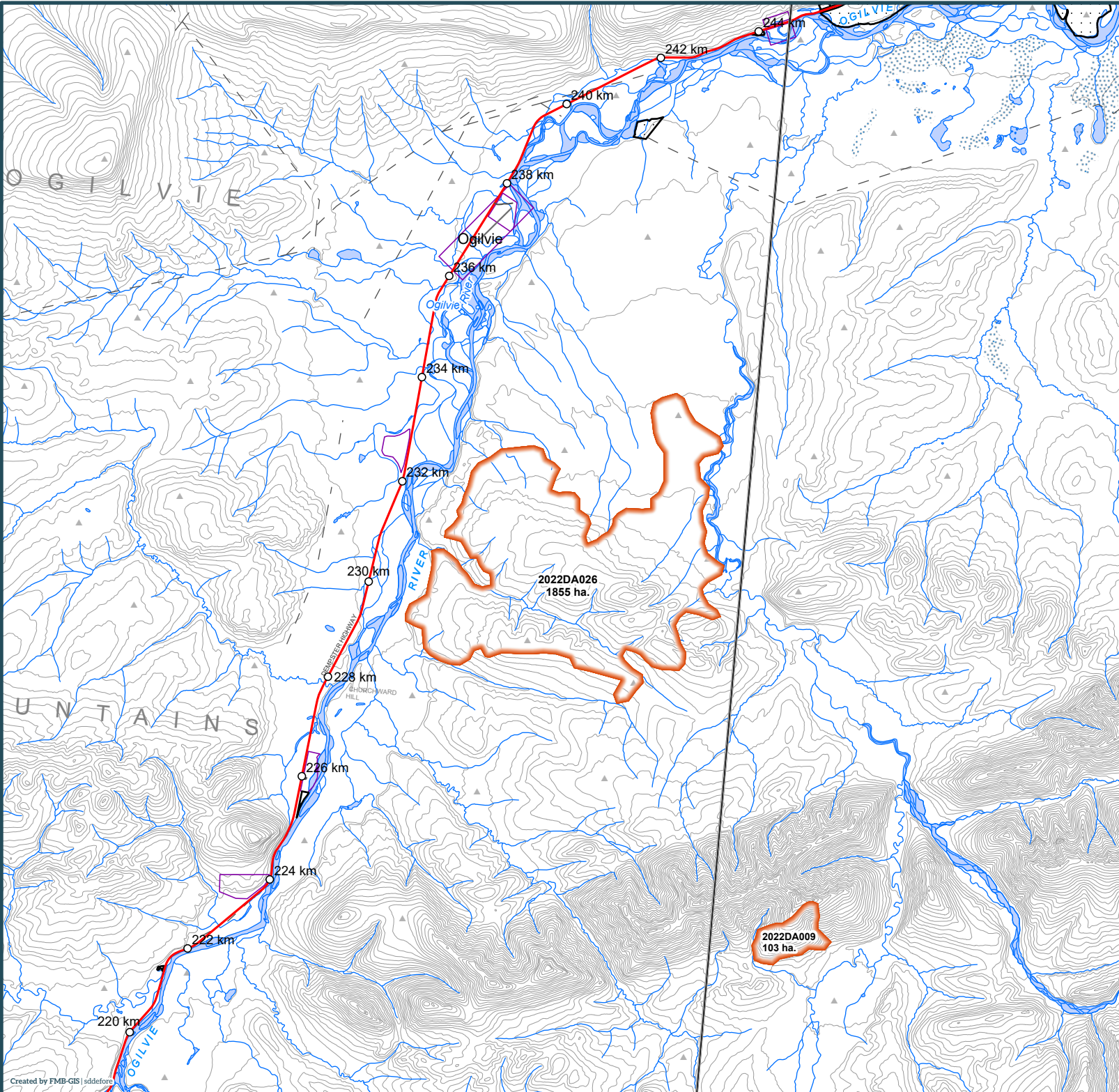
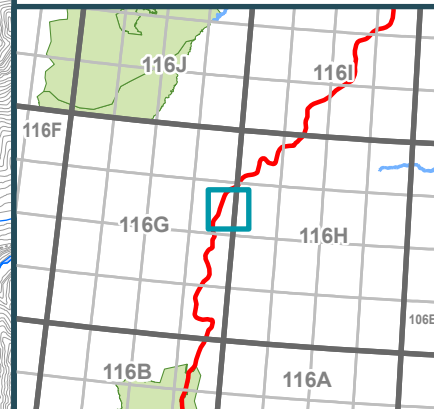


Kilometres

Map Center: 138°4'25"W 65°37'17"N
NAD 1983 Yukon Albers

- Fire Perimeter
- Surveyed Land Parcels
- Easements
- Land Dispositions
- Parks and Campgrounds
- Parks and Protected Areas
- First Nation Settlement Lands - Surveyed
- Interim Protected Settlement Lands
- Rivers & Streams
- Wetlands
- Lakes

1:250,000 NTS Map Series Numbers





2022 Wildland Fires

January 24, 2023

Fire District:
Dawson

2022DA027

Scale: 1:100,000

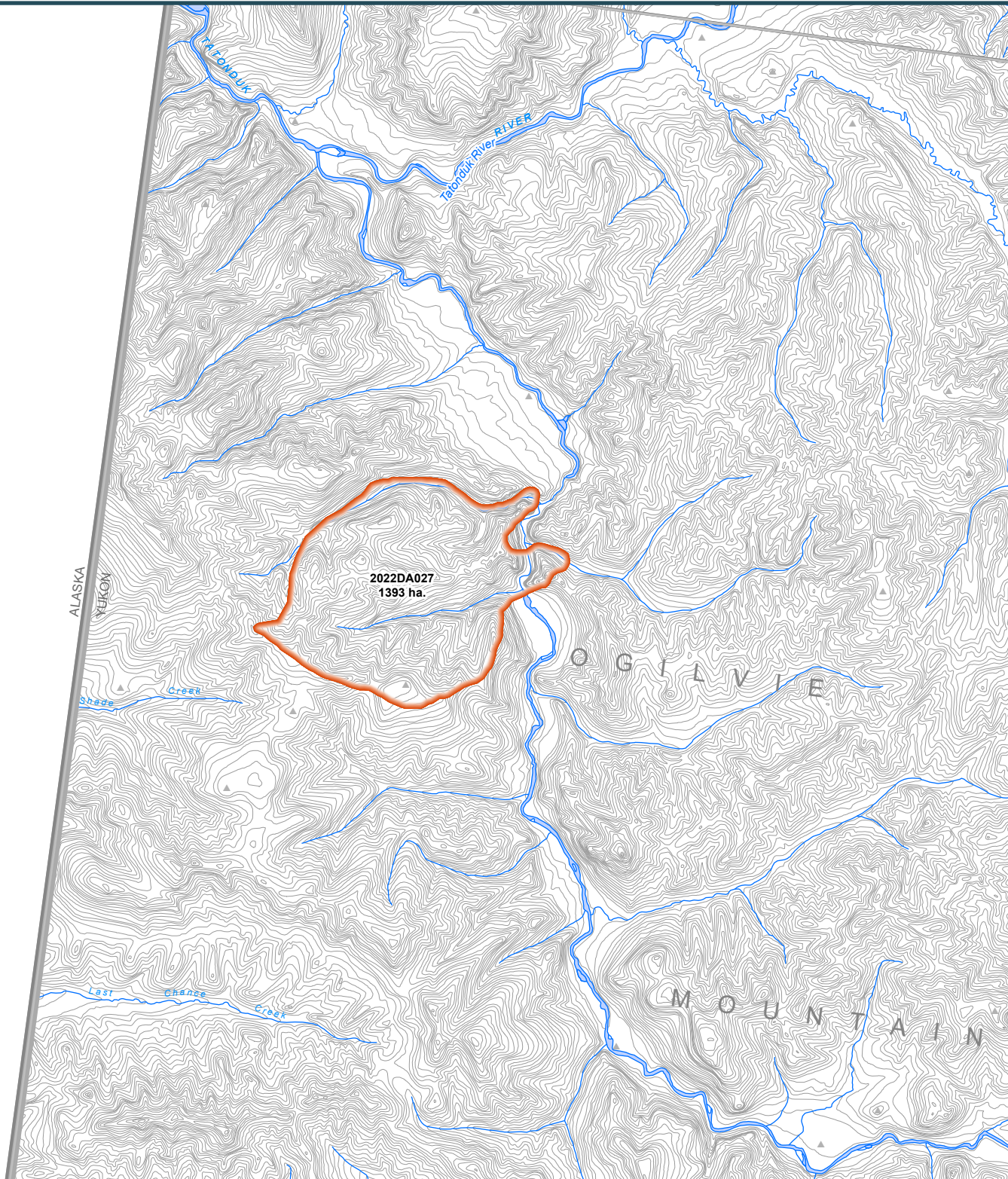
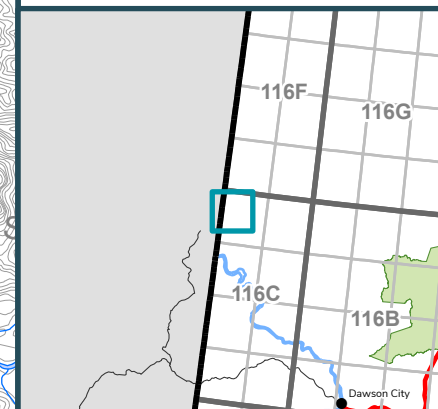


Kilometres

Map Center: 140°52'52"W 64°54'18"N
NAD 1983 Yukon Albers

- Fire Perimeter
- Surveyed Land Parcels
- Easements
- Land Dispositions
- Parks and Campgrounds
- Parks and Protected Areas
- First Nation Settlement Lands - Surveyed
- Interim Protected Settlement Lands
- Rivers & Streams
- Wetlands
- Lakes

1:250,000 NTS Map Series Numbers



2022 Wildland Fires

January 24, 2023

Fire District:
Dawson












2022DA029

Scale: 1:50,000

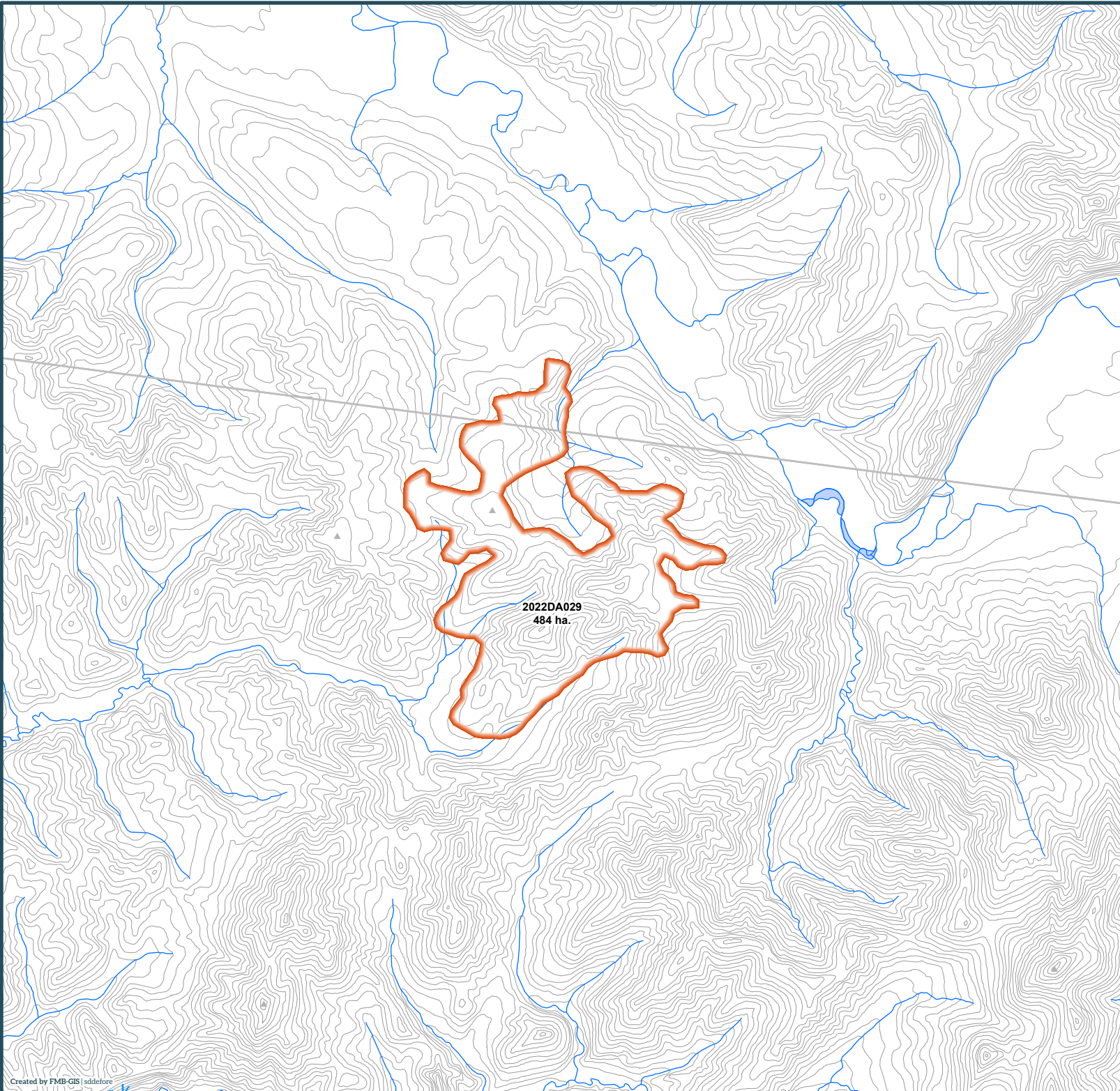
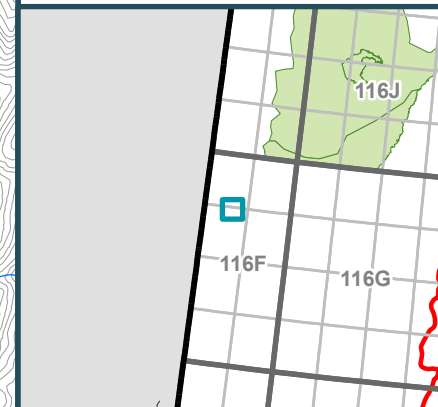


Kilometres

Map Center: 140°40'36"W 65°44'25"N
NAD 1983 Yukon Albers

-  Fire Perimeter
-  Surveyed Land Parcels
-  Easements
-  Land Dispositions
-  Parks and Campgrounds
-  Parks and Protected Areas
-  First Nation Settlement Lands - Surveyed
-  Interim Protected Settlement Lands
-  Rivers & Streams
-  Wetlands
-  Lakes

1:250,000 NTS Map Series Numbers



2022 Wildland Fires

January 24, 2023

Fire District:
Dawson












2022DA031

Scale: 1:50,000

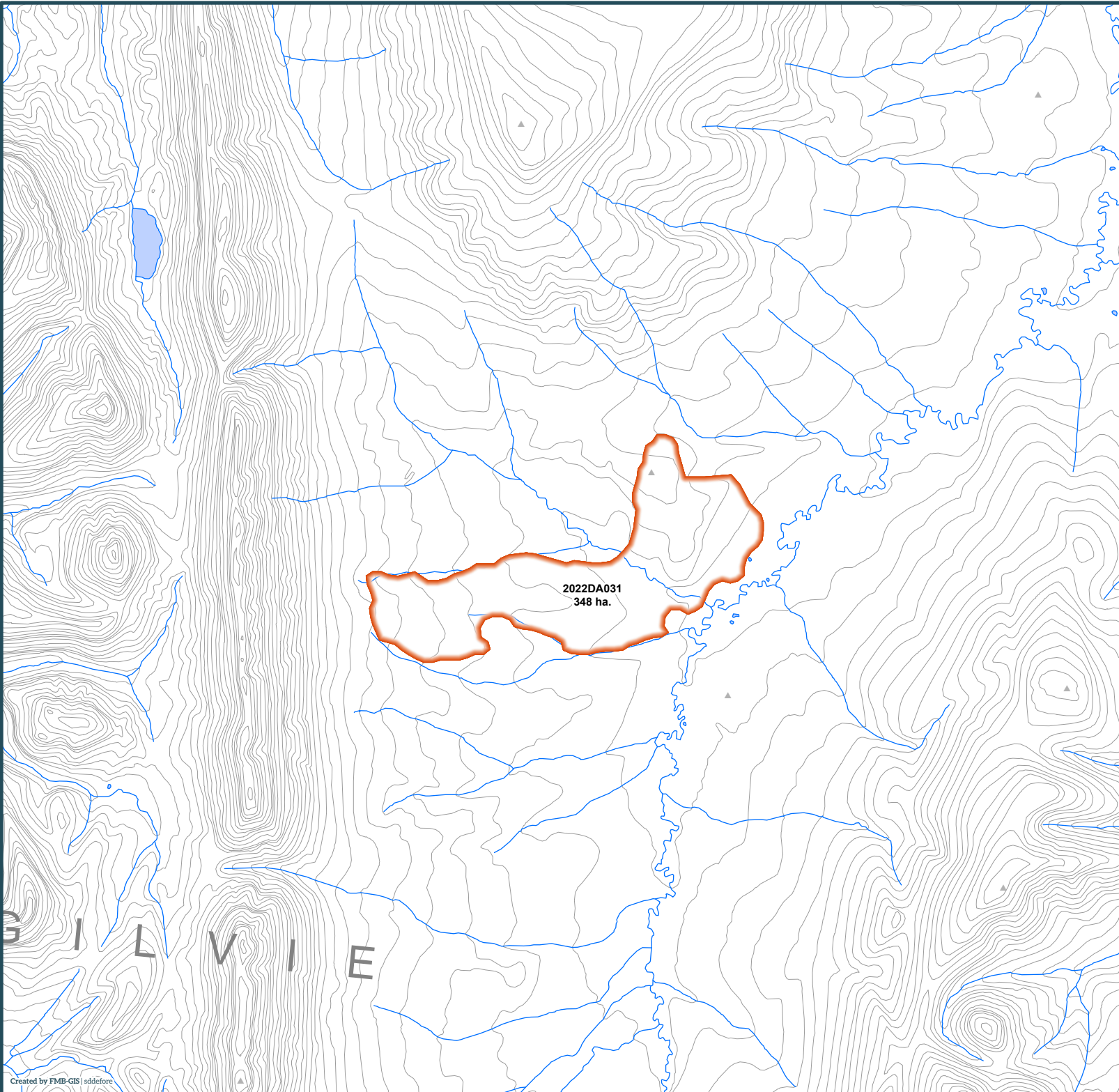


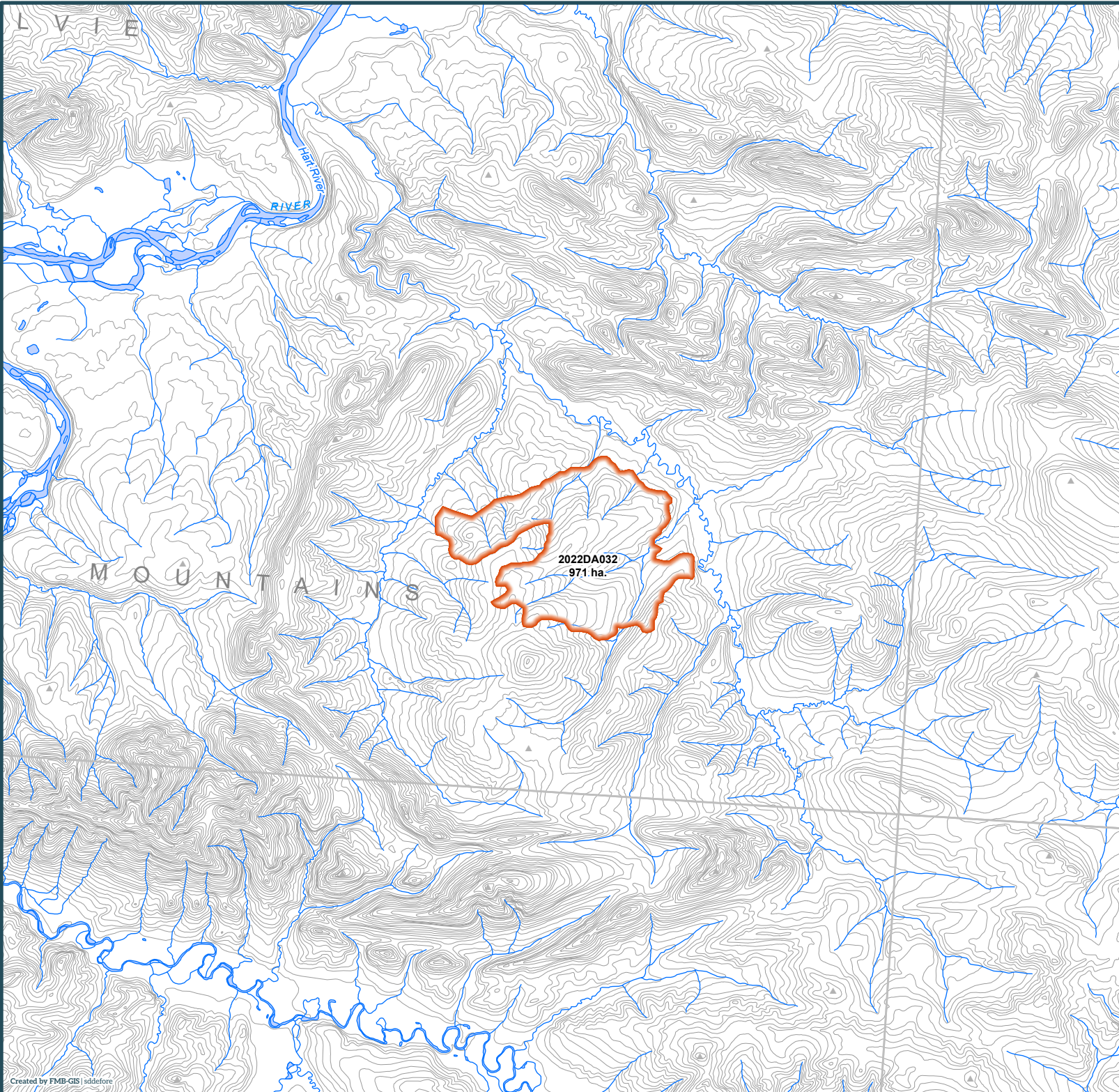
Kilometres

Map Center: 138°39'40"W 65°41'7"N
NAD 1983 Yukon Albers

-  Fire Perimeter
-  Surveyed Land Parcels
-  Easements
-  Land Dispositions
-  Parks and Campgrounds
-  Parks and Protected Areas
-  First Nation Settlement Lands - Surveyed
-  Interim Protected Settlement Lands
-  Rivers & Streams
-  Wetlands
-  Lakes

1:250,000 NTS Map Series Numbers





2022 Wildland Fires

January 24, 2023

Fire District:
Dawson

2022DA032

Scale: 1:100,000

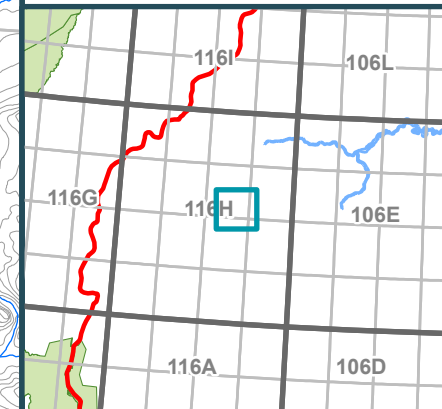


Kilometres

Map Center: 136°38'38"W 65°32'29"N
NAD 1983 Yukon Albers

- Fire Perimeter
- Surveyed Land Parcels
- Easements
- Land Dispositions
- Parks and Campgrounds
- Parks and Protected Areas
- First Nation Settlement Lands - Surveyed
- Interim Protected Settlement Lands
- Rivers & Streams
- Wetlands
- Lakes

1:250,000 NTS Map Series Numbers



2022 Wildland Fires

January 24, 2023

Fire District:
Dawson












2022DA033

Scale: 1:100,000

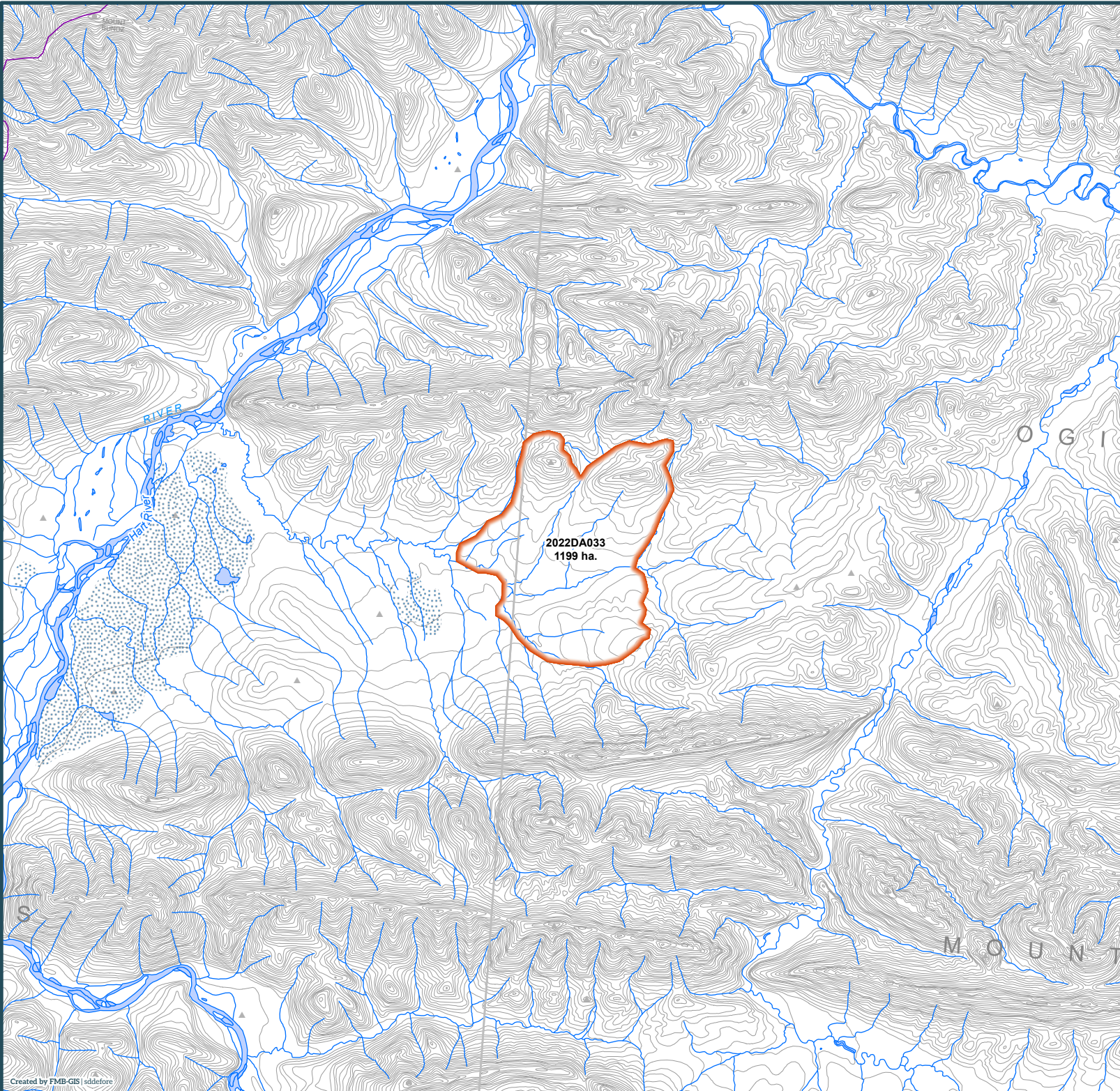


Kilometres

Map Center: 136°58'50"W 65°23'57"N
NAD 1983 Yukon Albers

-  Fire Perimeter
-  Surveyed Land Parcels
-  Easements
-  Land Dispositions
-  Parks and Campgrounds
-  Parks and Protected Areas
-  First Nation Settlement Lands - Surveyed
-  Interim Protected Settlement Lands
-  Rivers & Streams
-  Wetlands
-  Lakes

1:250,000 NTS Map Series Numbers



2022 Wildland Fires

January 24, 2023

Fire District:
Dawson










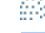

2022DA040

Scale: 1:50,000

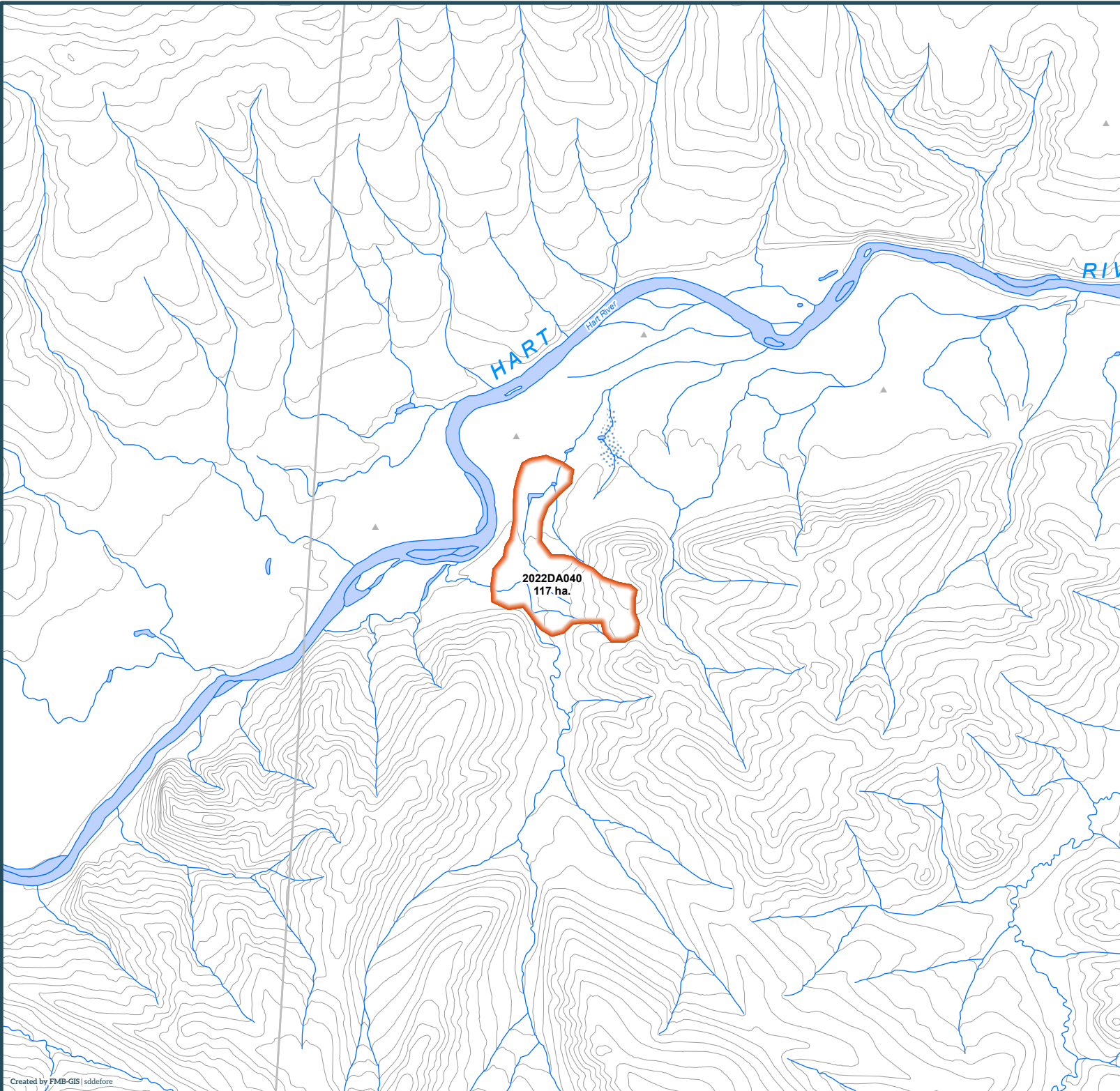
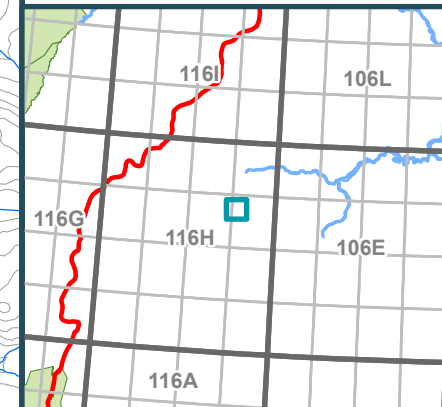


Kilometres

Map Center: 136°26'51"W 65°40'56"N
NAD 1983 Yukon Albers

-  Fire Perimeter
-  Surveyed Land Parcels
-  Easements
-  Land Dispositions
-  Parks and Campgrounds
-  Parks and Protected Areas
-  First Nation Settlement Lands - Surveyed
-  Interim Protected Settlement Lands
-  Rivers & Streams
-  Wetlands
-  Lakes

1:250,000 NTS Map Series Numbers



2022 Wildland Fires

January 24, 2023

Fire District:
Dawson












2022DA041

Scale: 1:50,000



Kilometres

Map Center: 136°4'2"W 65°32'30"N
NAD 1983 Yukon Albers

-  Fire Perimeter
-  Surveyed Land Parcels
-  Easements
-  Land Dispositions
-  Parks and Campgrounds
-  Parks and Protected Areas
-  First Nation Settlement Lands - Surveyed
-  Interim Protected Settlement Lands
-  Rivers & Streams
-  Wetlands
-  Lakes

1:250,000 NTS Map Series Numbers

