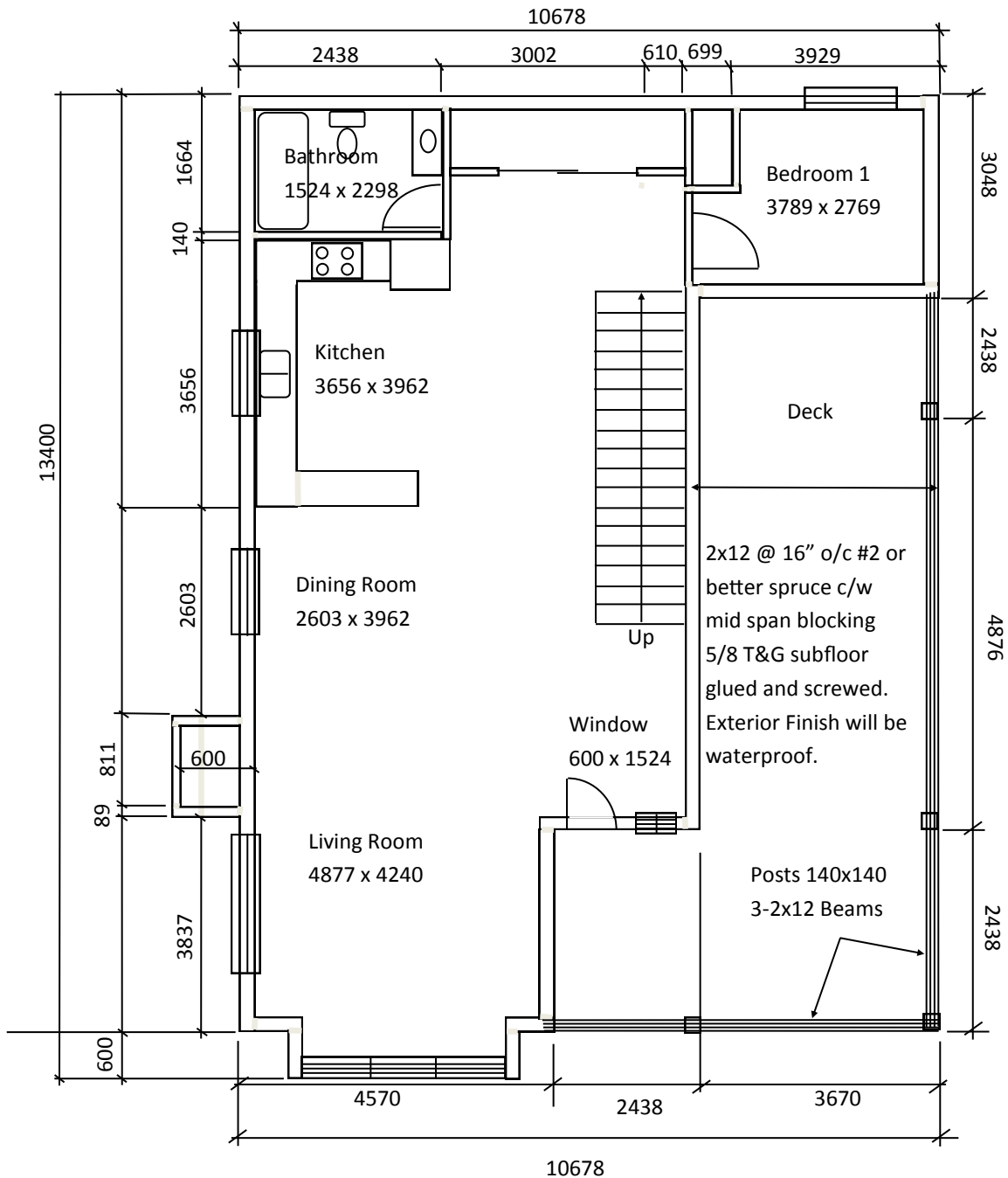


Figure 3 TYPICAL FLOOR PLAN EXAMPLE



Note: All headers will be 2-2x12

All cripples will be doubled
on spans greater than 3m.

Mechanical: HRV will be installed as well
as a high efficient oil fired furnace.

Windows: All windows will be triple pain
and Bedroom windows will be of an
approved egress type.