


# plan marsh lake

MARSH LAKE LOCAL AREA PLAN

## Map 1 - Existing Land Use

### LEGEND

-  Planning Area
-  Special Management Area
-  Residential & Commercial
-  Agricultural
-  Industrial & Infrastructure
-  Kwanlin Dün FN Settlement Land
-  Carcross/Tagish FN Settlement Land



Data Disclaimer: No warranty is made by Site Planning + GIS Consulting regarding data accuracy or completeness. Accuracy is limited to the scale, resolution, and date of source data. This document is for reference purpose only and is not intended for publication, copy, or distribution.

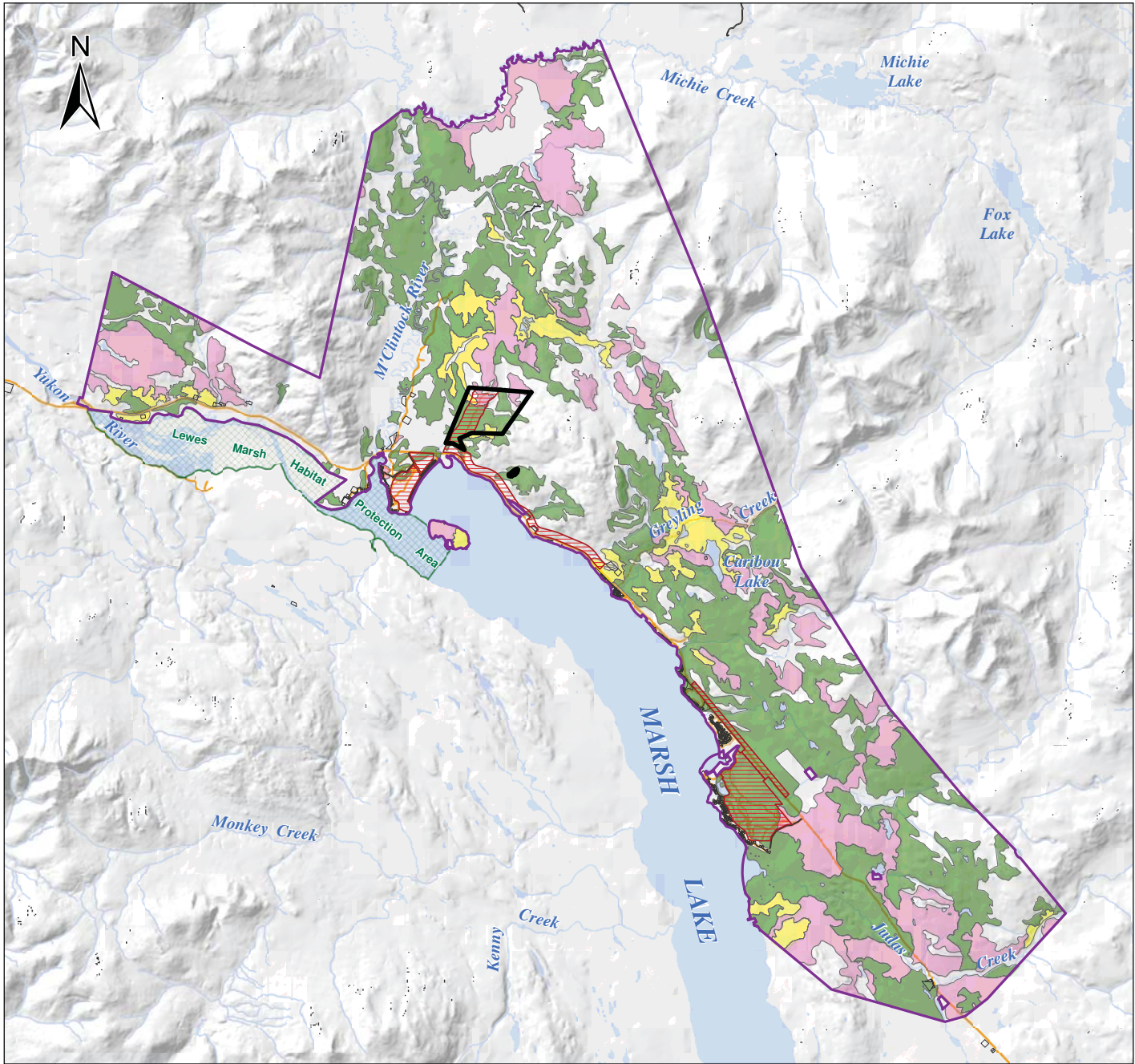
© Site | Planning + GIS Inc., October 24, 2012

Site | Planning + GIS

# Yukon

Energy, Mines and Resources  
Sustainable Development Division  
Land Planning Branch

Updated: Friday, November 07, 2014  
db







# plan marsh lake

MARSH LAKE LOCAL AREA PLAN

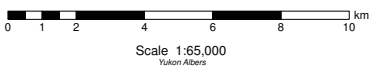
## Map 2 - Leading Tree Species

### LEGEND

-  Planning Area
-  Personal Use Firewood Area
-  Timber Harvest Plan
-  Special Management Area

### Leading Tree Species

-  Aspen
-  Pine
-  Spruce



Data Disclaimer: No warranty is made by Site Planning + GIS Consulting regarding data accuracy or completeness. Accuracy is limited to the scale, resolution, and date of source data. This document is for reference purpose only and is not intended for publication, copy, or distribution.

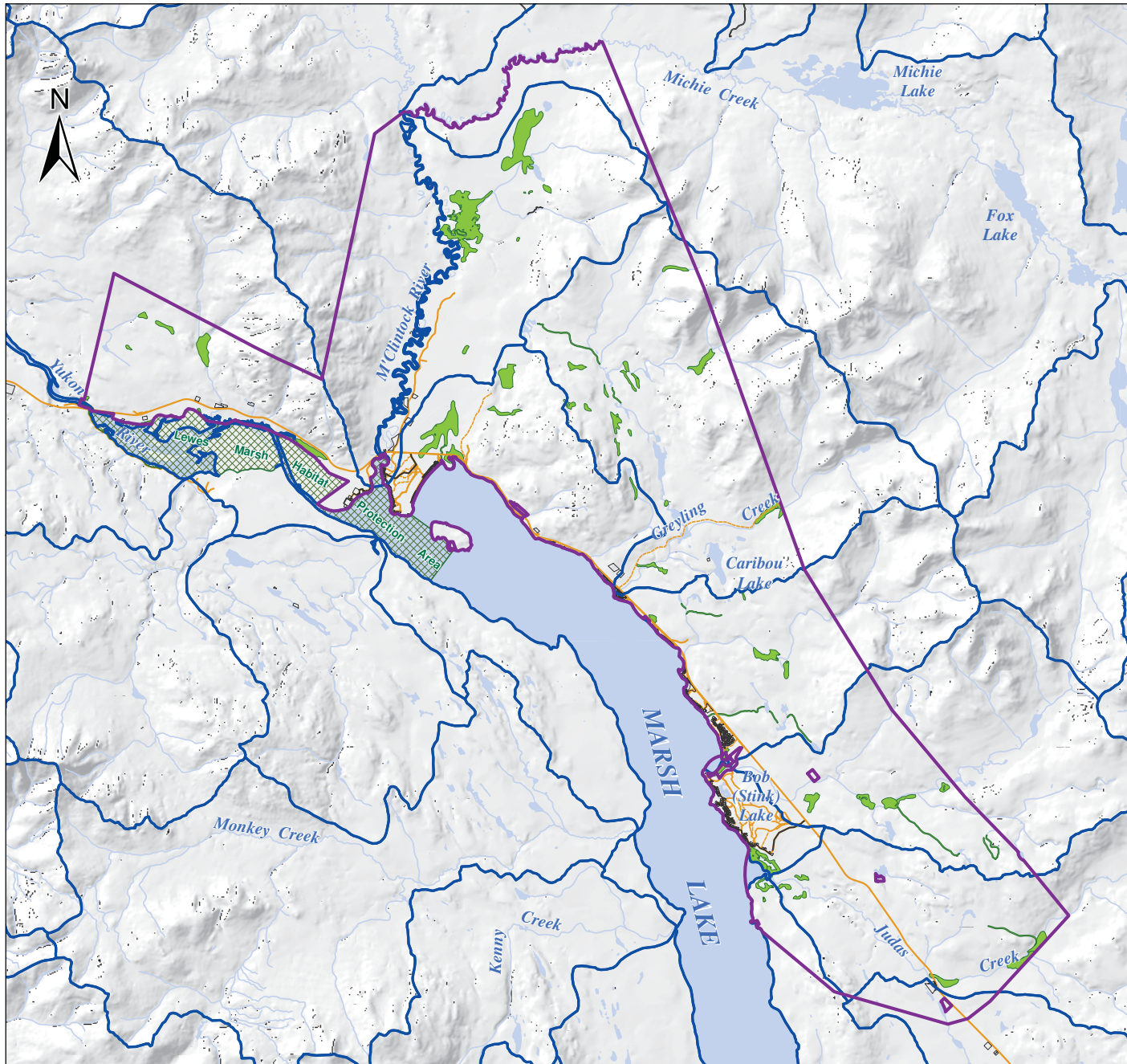
© Site | Planning + GIS Inc., October 24, 2012

Site | Planning + GIS



Energy, Mines and Resources  
Sustainable Development Division  
Land Planning Branch

Updated: Friday, November 07, 2014  
db





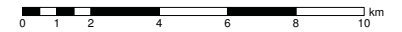
# plan marsh lake

MARSH LAKE LOCAL AREA PLAN

## Map 3 - Wetlands and Watersheds

### LEGEND

-  Planning Area
-  Wetlands
-  South-Yukon Watersheds
-  Special Management Area



Scale 1:65,000  
Yukon Albers

Data Disclaimer: No warranty is made by Site Planning + GIS Consulting regarding data accuracy or completeness. Accuracy is limited to the scale, resolution, and date of source data. This document is for reference purpose only and is not intended for publication, copy, or distribution.

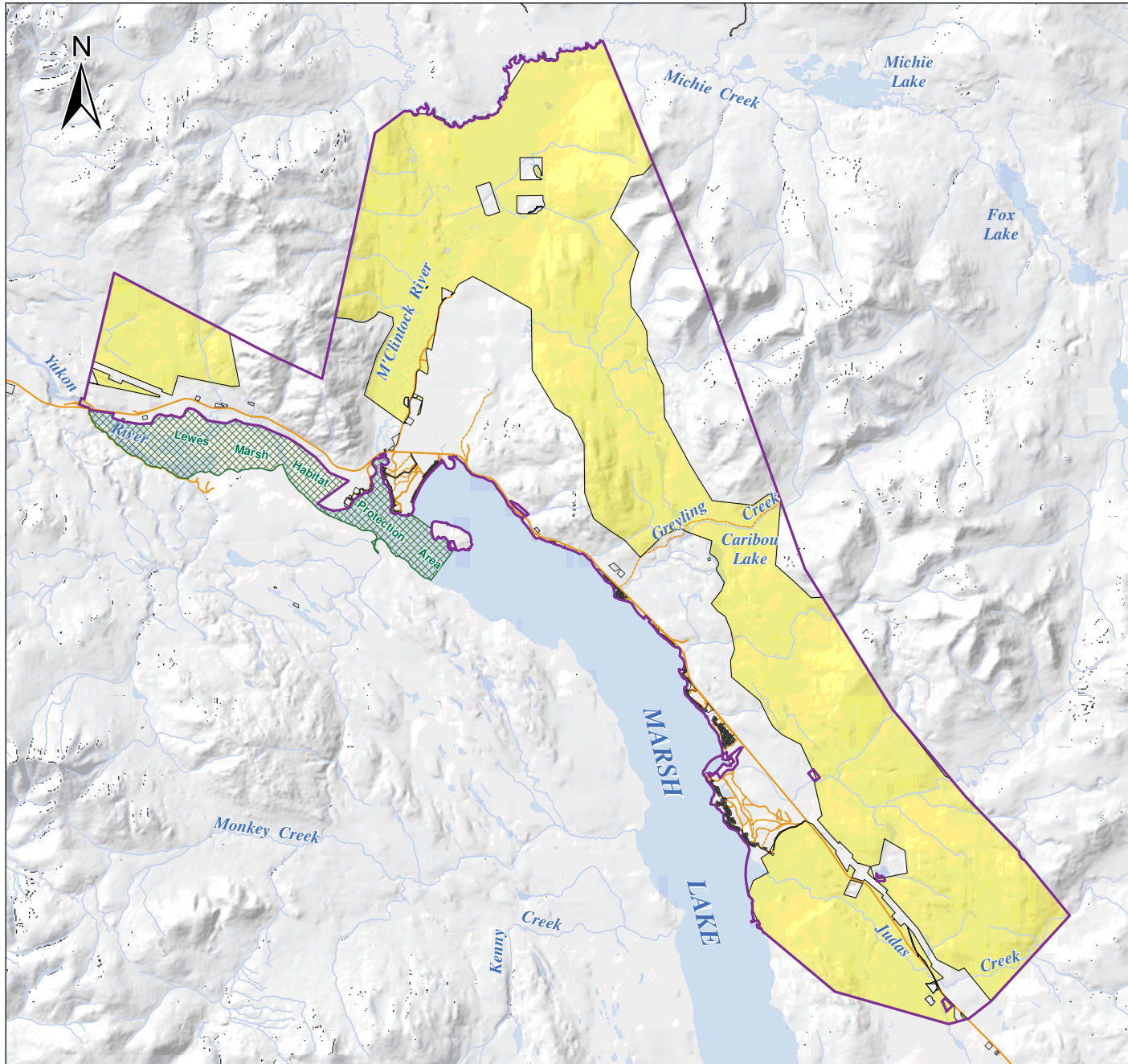
© Site | Planning + GIS Inc., October 24, 2012

Site | Planning + GIS

# Yukon

Energy, Mines and Resources  
Sustainable Development Division  
Land Planning Branch

Updated: Friday, November 07, 2014  
db






# plan marsh lake

MARSH LAKE LOCAL AREA PLAN

## Map 4 - Carcross Caribou Herd Winter Habitat

### LEGEND

-  Planning Area
-  Special Management Area
-  Carcross Caribou Winter Habitat



Scale 1:65,000  
Yukon Affairs

Data Disclaimer: No warranty is made by Site Planning + GIS Consulting regarding data accuracy or completeness. Accuracy is limited to the scale, resolution, and date of source data. This document is for reference purpose only and is not intended for publication, copy, or distribution.

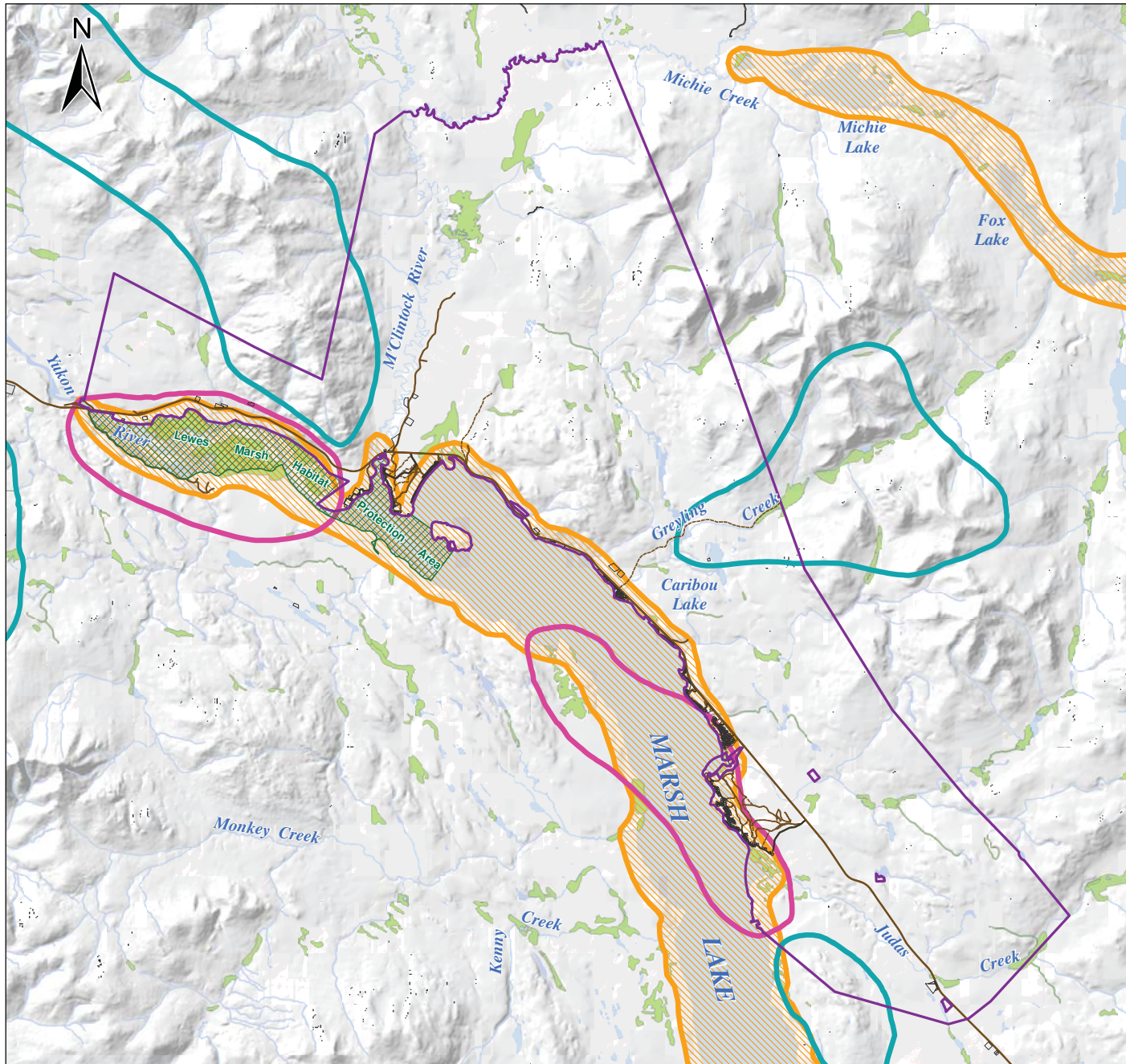
© Site | Planning + GIS Inc., October 24, 2012

Site | Planning + GIS

# Yukon

Energy, Mines and Resources  
Sustainable Development Division  
Land Planning Branch

Updated: Friday, November 07, 2014  
db









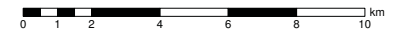
# plan marsh lake

MARSH LAKE LOCAL AREA PLAN

## Map 5 - Wildlife Key Areas Waterfowl & Raptors

### LEGEND

-  Planning Area
-  Special Management Area
-  Wetlands
- Waterfowl Key Areas**
-  Various seasons & functions
- Raptor Key Areas (Summer Nesting)**
-  Golden Eagle
-  Bald Eagle



Scale 1:65,000  
Yukon Affairs

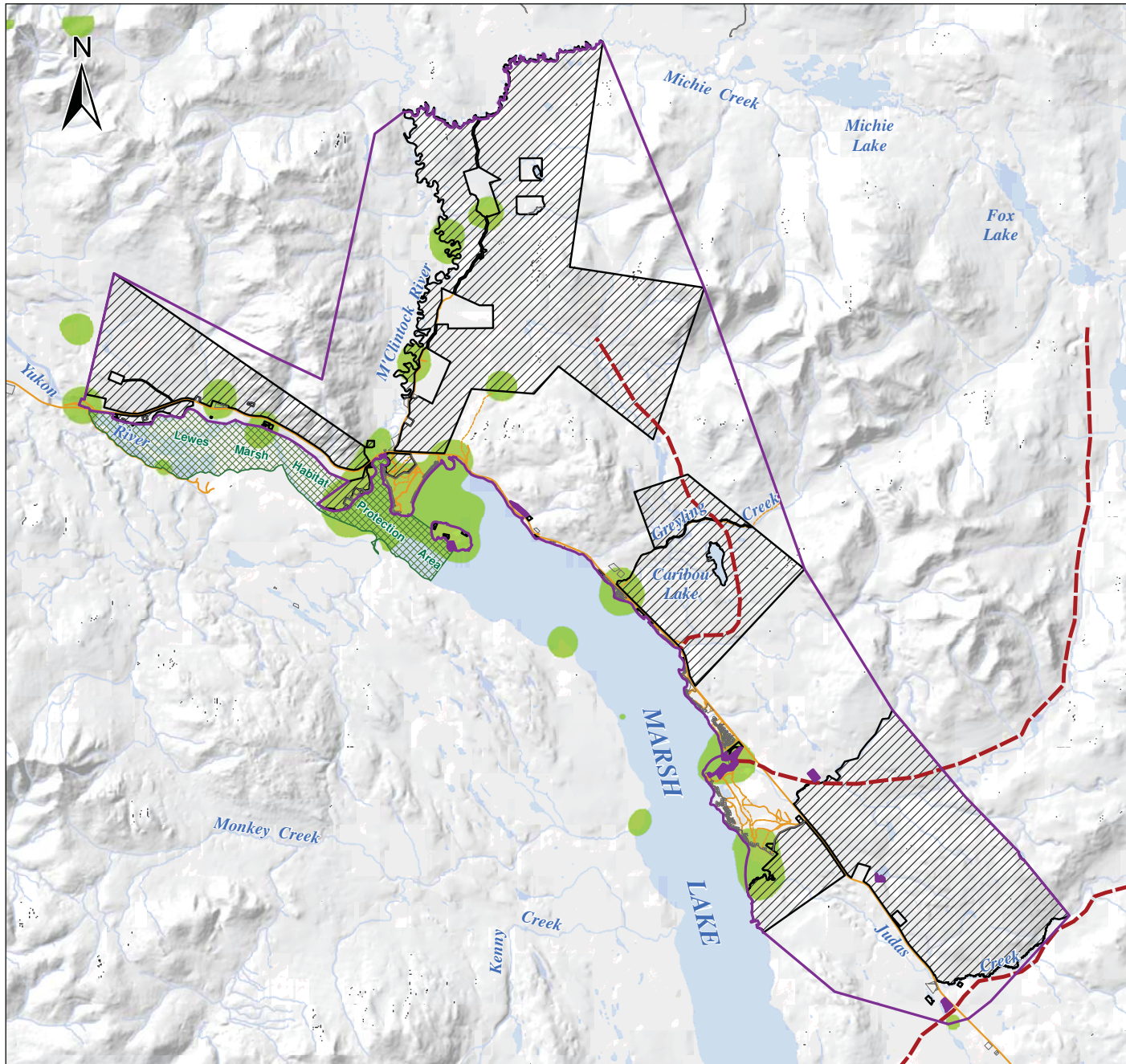
Data Disclaimer: No warranty is made by Site Planning + GIS Consulting regarding data accuracy or completeness. Accuracy is limited to the scale, resolution, and date of source data. This document is for reference purpose only and is not intended for publication, copy, or distribution.

© Site | Planning + GIS Inc., October 24, 2012 Site | Planning + GIS

# Yukon

Energy, Mines and Resources  
Sustainable Development Division  
Land Planning Branch

Updated: Friday, November 07, 2014  
db









# plan marsh lake

MARSH LAKE LOCAL AREA PLAN

## Map 6 - Cultural and Heritage Resources

### LEGEND

-  Planning Area
-  Special Management Area
-  Kwanlin Dün FN Settlement Land
-  Carcross/Tagish FN Settlement Land
-  First Nation Heritage Trail
-  Areas of Heritage Values



Scale 1:65,000  
Yukon-Alberta

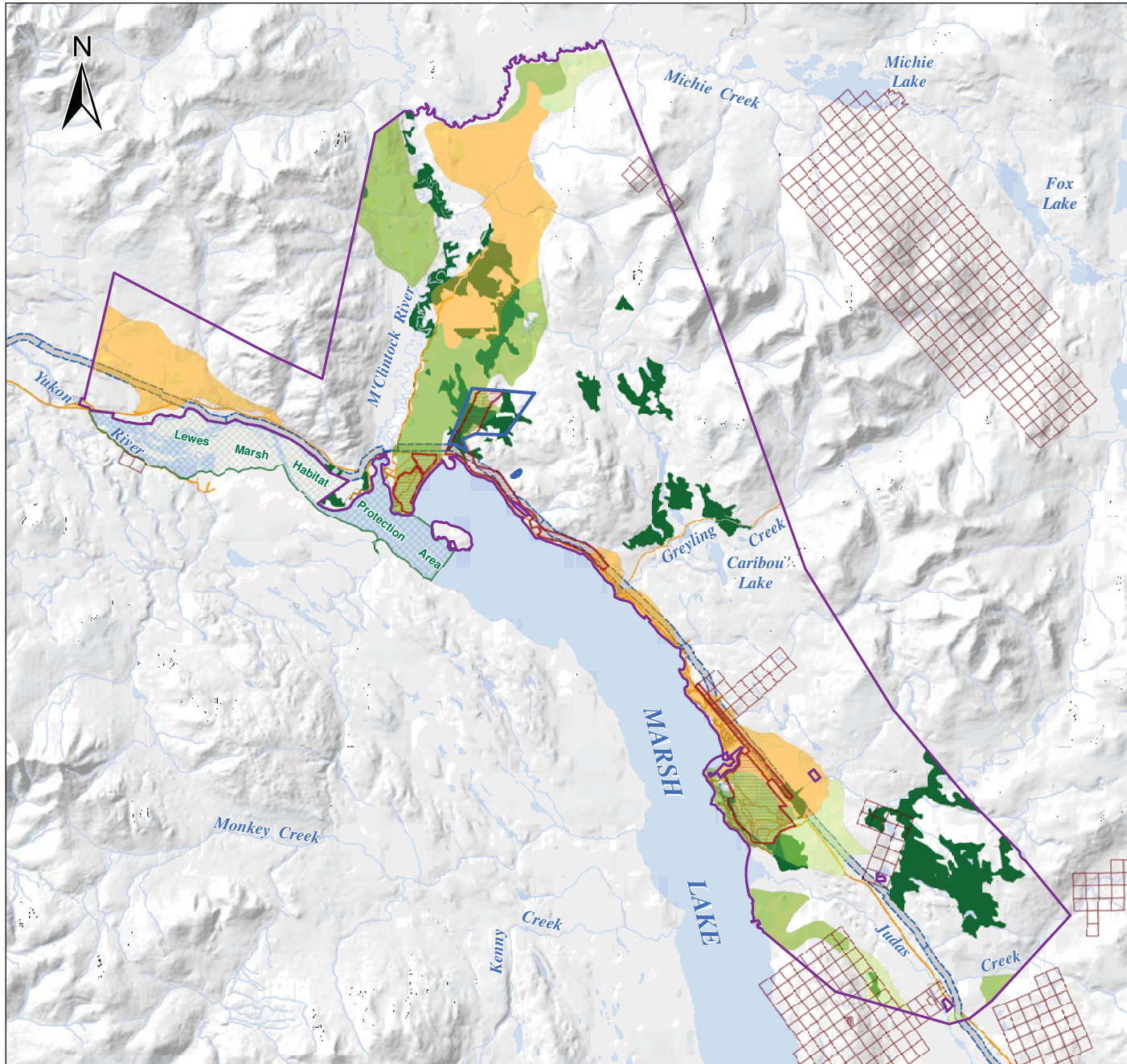
**Yukon**

Energy, Mines and Resources  
Sustainable Development Division  
Land Planning Branch

Updated: Friday, November 07, 2014  
db

Data Disclaimer: No warranty is made by Site Planning + GIS Consulting regarding data accuracy or completeness. Accuracy is limited to the scale, resolution, and date of source data. This document is for reference purpose only and is not intended for publication, copy, or distribution.

Site | Planning + GIS



# plan marsh lake

MARSH LAKE LOCAL AREA PLAN

## Map 7 - Resource Tenure & Potential

### LEGEND

Planning Area

Special Management Area

#### Agriculture Capability

Considered acceptable for seeded forage

5CH - Short Frost Season

5M - Low moisture holding capacity

5MT - Low moisture and steep slopes

#### Resource Tenure (as of Sept. 8, 2014)

Active Quartz Claims

Alaska HWY Pipeline Easement/Reserve

Timber Harvest Plan

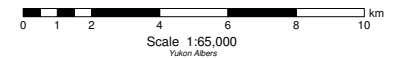
Personal Use Fuelwood

#### Merchantable Timber \*

Height of Tree (m)

Tallest Trees (1986)

\* Height of tree is an indicator of volume. In Marsh Lake Study Area, the trees are small in height. Areas where tree height is between 15-20 metres, the volume will be greater. The leading species in the area are White Spruce and Pine.



Data Disclaimer: No warranty is made by Site Planning + GIS Consulting regarding data accuracy or completeness. Accuracy is limited to the scale, resolution, and date of source data. This document is for reference purpose only and is not intended for publication, copy, or distribution.

© Site | Planning + GIS Inc., October 24, 2012 Site | Planning + GIS

# Yukon

Energy, Mines and Resources  
Sustainable Development Division  
Land Planning Branch

Updated: Friday, November 07, 2014  
db

# plan marsh lake

MARSH LAKE LOCAL AREA PLAN

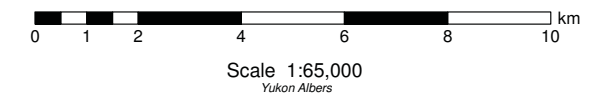
## Map 8 - Growth Strategy (Overall Map)

### LEGEND

- Planning Area
- ▨ Special Management Area
- ▨ Kwanlin Dün FN Settlement Land
- Carcross/Tagish FN Settlement Land

### Residential Designations

- Existing
- Future - Short Term
- Future - Long Term



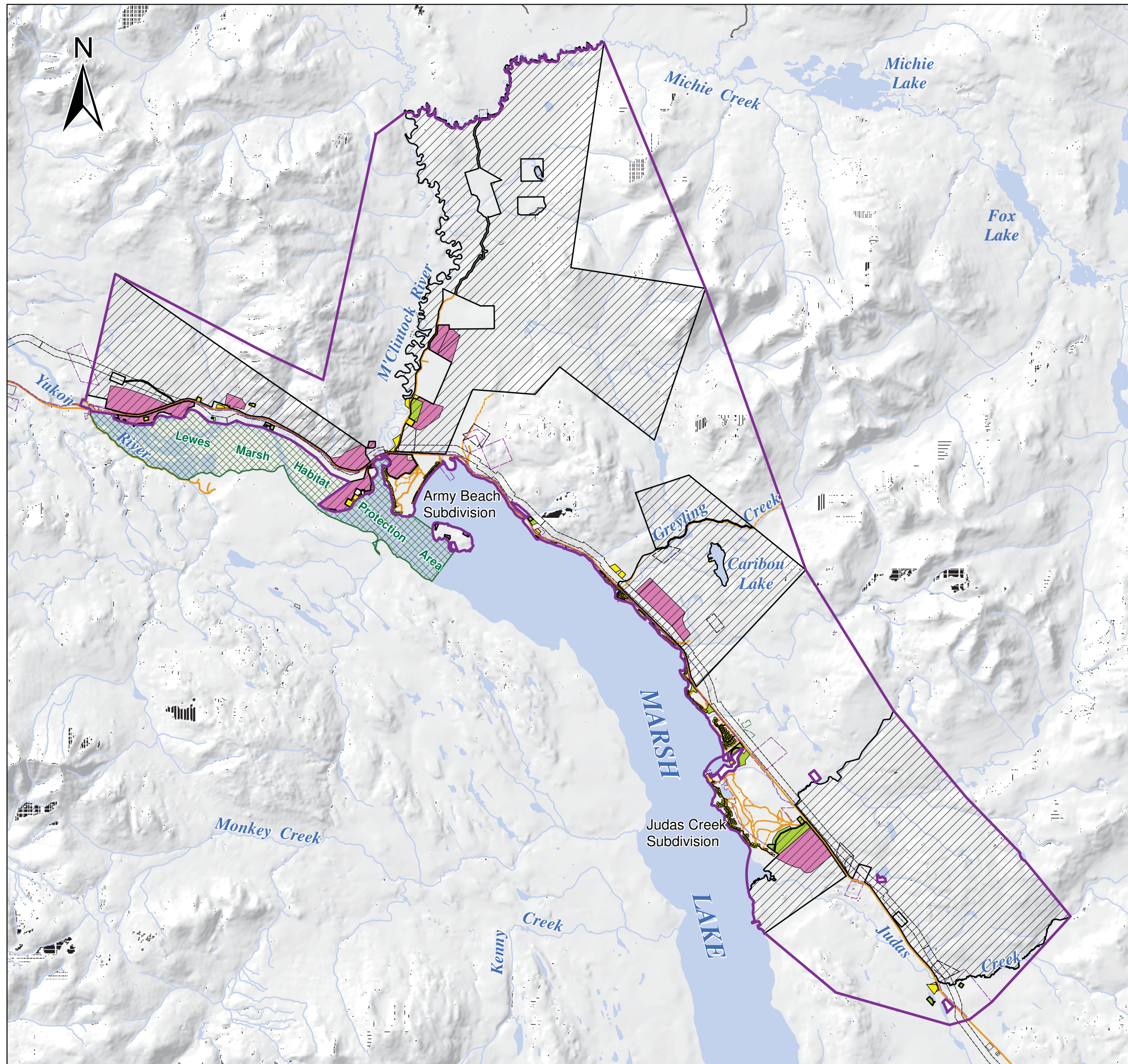
Data Disclaimer: No warranty is made by Site Planning + GIS Consulting regarding data accuracy or completeness. Accuracy is limited to the scale, resolution, and date of source data. This document is for reference purpose only and is not intended for publication, copy, or distribution.

© Site | Planning + GIS Inc., October 24, 2012 Site | Planning + GIS

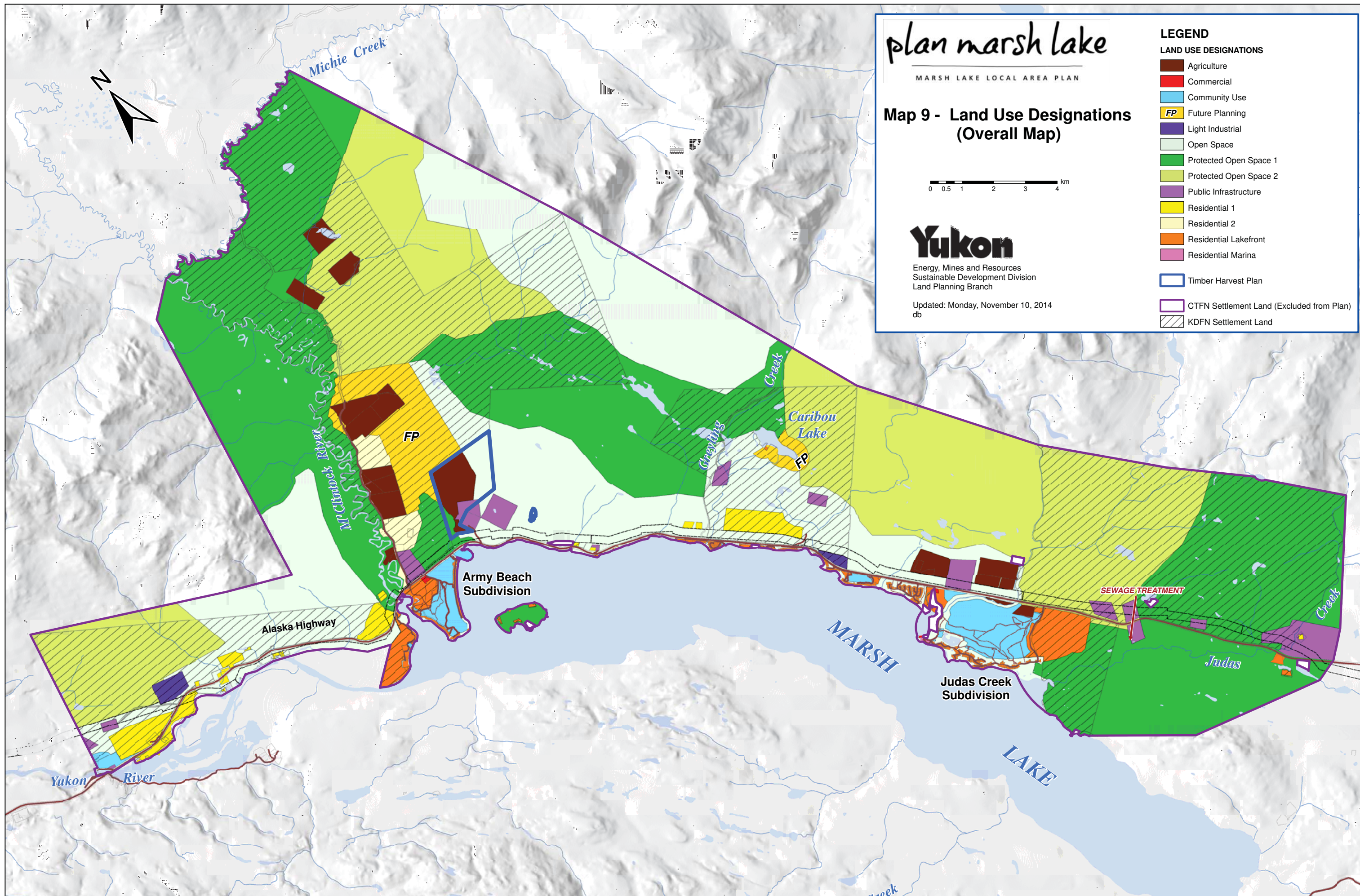
# Yukon

Energy, Mines and Resources  
Sustainable Development Division  
Land Planning Branch

Updated: Monday, November 10, 2014  
db







# plan marsh lake

MARSH LAKE LOCAL AREA PLAN

## Map 9 - Land Use Designations (Overall Map)



### Yukon

Energy, Mines and Resources  
Sustainable Development Division  
Land Planning Branch

Updated: Monday, November 10, 2014  
db

### LEGEND

#### LAND USE DESIGNATIONS

- Agriculture
- Commercial
- Community Use
- Future Planning
- Light Industrial
- Open Space
- Protected Open Space 1
- Protected Open Space 2
- Public Infrastructure
- Residential 1
- Residential 2
- Residential Lakefront
- Residential Marina
- Timber Harvest Plan
- CTFN Settlement Land (Excluded from Plan)
- KDFN Settlement Land

# plan marsh lake

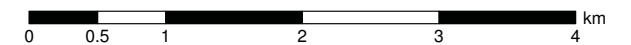
MARSH LAKE LOCAL AREA PLAN

## Map 9 - Land Use Designations (Detail Map)

### LEGEND

#### LAND USE DESIGNATIONS

- Agriculture
- Commercial
- Community Use
- FP** Future Planning
- Light Industrial
- Open Space
- Protected Open Space 1
- Protected Open Space 2
- Public Infrastructure
- Residential 1
- Residential 2
- Residential Lakefront
- Residential Marina
- Timber Harvest Plan
- CTFN Settlement Land (Excluded from Plan)
- KDFN Settlement Land



Scale 1:25,000  
Yukon Albers

# Yukon

Energy, Mines and Resources  
Sustainable Development Division  
Land Planning Branch

Updated: Monday, November 10, 2014  
db

