

Map 1. Planning Overview

FOX LAKE LOCAL AREA PLAN

Planning Boundary	First Nation	Land Disposition	Land Use
Waterbody	Kwanlin Dün	Rural Residential	Gravel Pit
Stream	Little Salmon Carmacks	Pending Land Application	Rest Area
Contour	Ta'an Kwäch'än	Agriculture	Quarry
Klondike Highway	Forest Fire	See page 18, Chapter 6, Agriculture Section	Roadway Reserve
Streets	Fox Lake Burn 1998		Utility
			Campground
			Titled Land

DATA DISCLAIMER:
No warranty is made by 3Pikas regarding data accuracy or completeness. Accuracy is limited to the scale, resolution, and date of source data. This document is for reference purpose only and is not intended for publication, copy, or distribution.

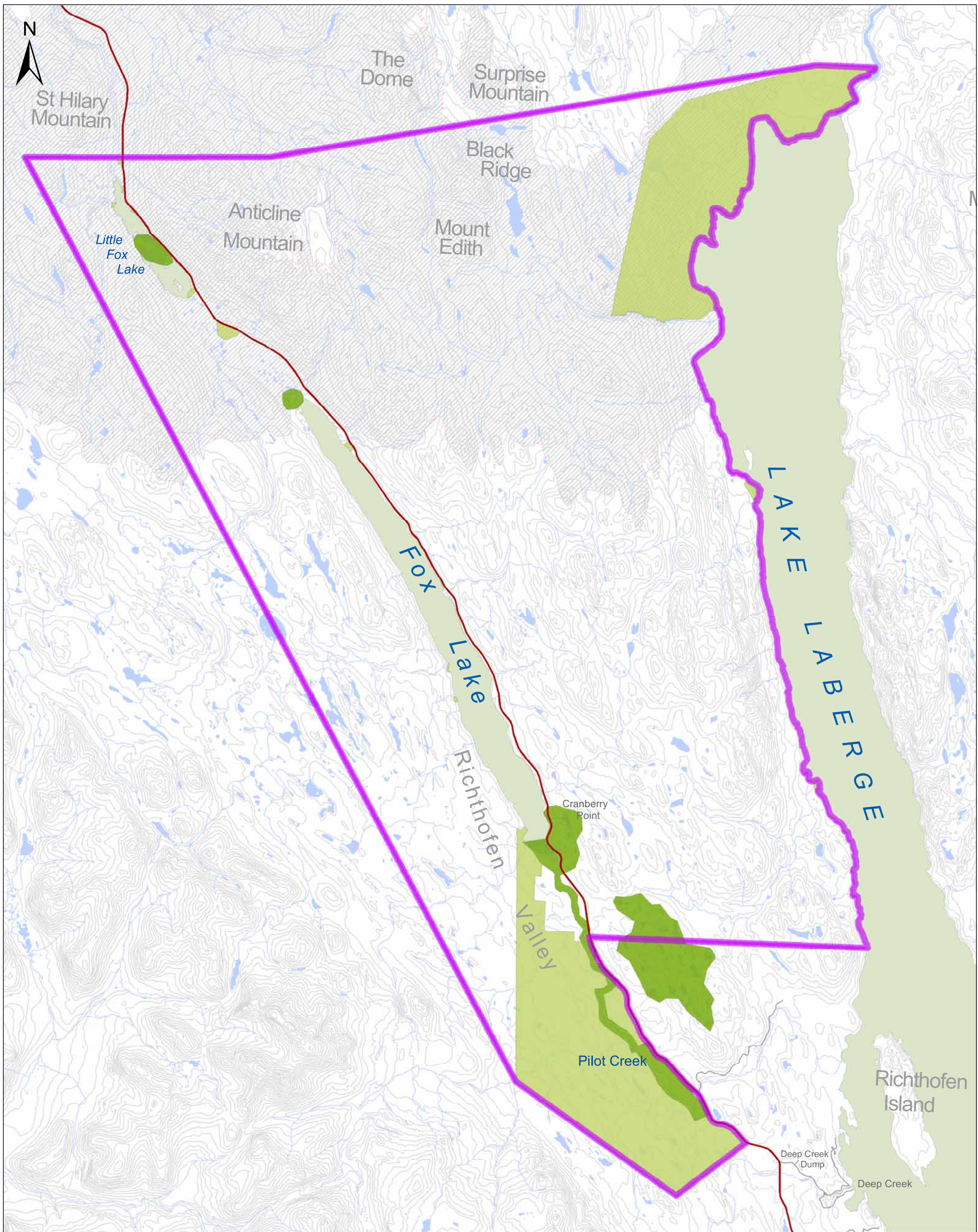
DATA SOURCE:
Base data: 1:50,000 Water, Stream, Road data CanVec (NRCAN), 1:50,000 Contour NTDB
Thematic data: 1:250,000 Settlement Lands (Geomatics Yukon),
Forest Fires History 2012 (Wildland Fire Management Branch, YG),
Land Application & Land Disposition 2014/01/24 (EMR Lands Management Branch, YG),
Agriculture (EMR Agriculture Branch, YG), Planning Boundary (EMR Land Planning Branch, YG),
Titled Land (NRCAN).

Yukon Albers



URBAN
systems

3Pikas



Map 2. Ta'an Kwäch'an Areas of Cultural Significance

FOX LAKE LOCAL AREA PLAN

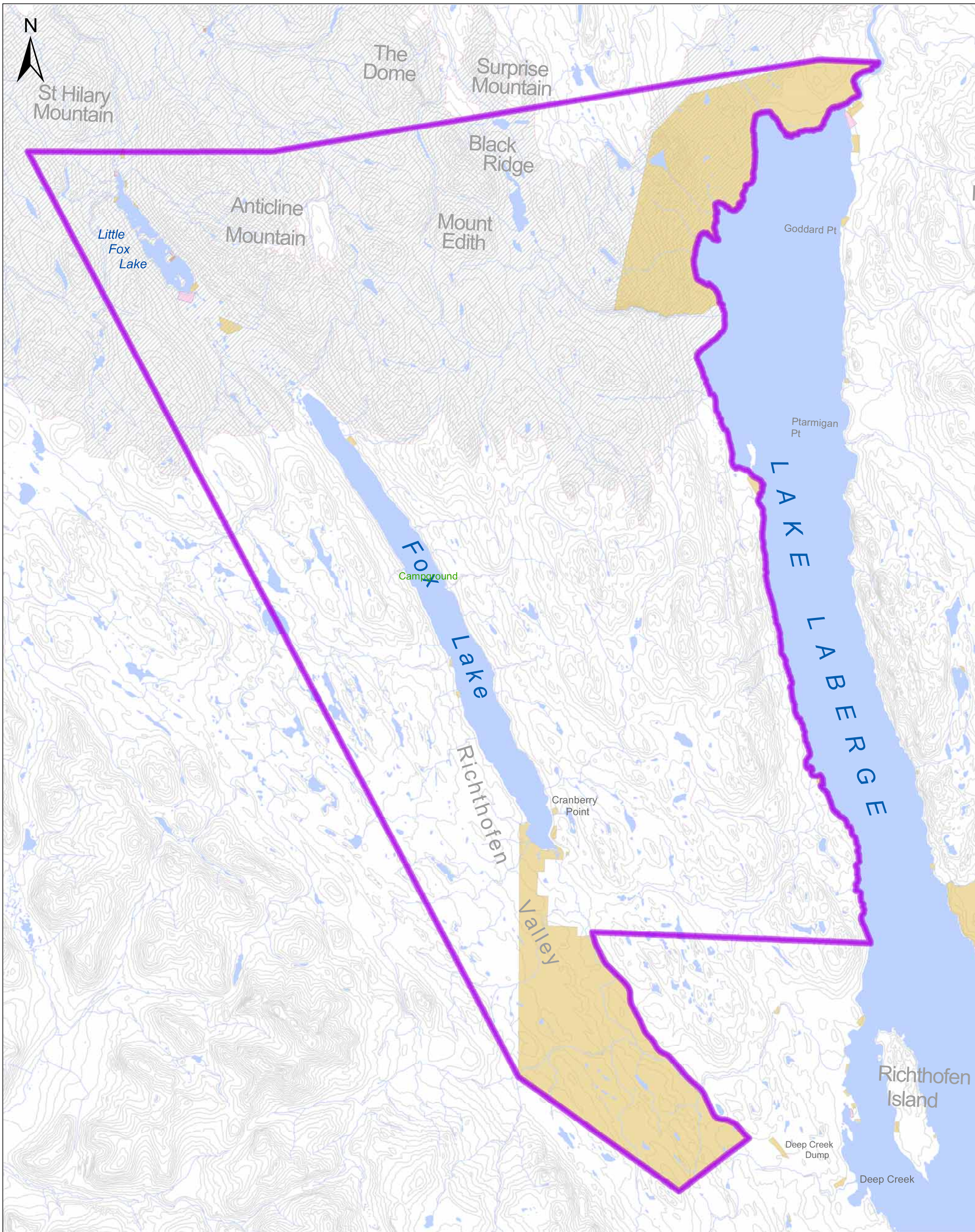
Legend

- | | | |
|-------------------|--------------------|--|
| Planning Boundary | Forest Fire | Ta'an Kwäch'an Heritage Values |
| Waterbody | Fox Lake Burn 1998 | Area of Important Cultural/Heritage Values |
| Stream | | Important Fishing Lake |
| Contour | | Ta'an Kwäch'an Settlement Lands |
| Klondike Highway | | |
| Street | | |

Data Disclaimer: No warranty is made by 3Pikas Development Studio regarding data accuracy or completeness. Accuracy is limited to the scale, resolution, and date of source data. This document is for reference purpose only and is not intended for publication, copy, or distribution.







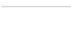



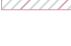
Yukon Albers

0 2 4 8 KM



Map 3. Wetlands

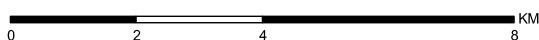
FOX LAKE LOCAL AREA PLAN

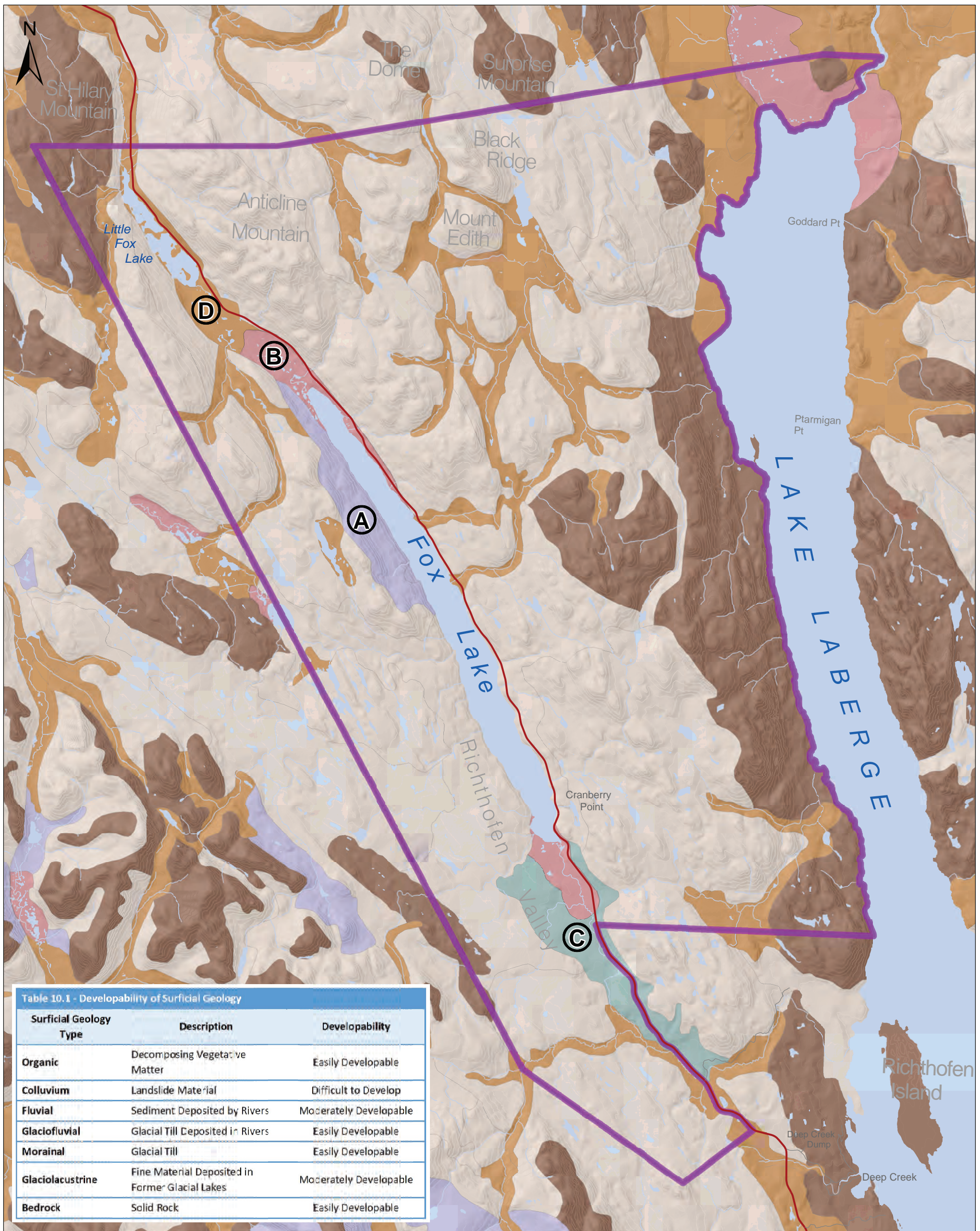
 Planning Boundary	First Nation	Wetland
 Waterbody	 Kwanlin Dün	 Bog, Fen, Marsh, Swamp
 Stream	 Little Salmon Carmacks	
 Contour	 Ta'an Kwäch'än	
 Klondike Highway	Forest Fire	
 Streets	 Fox Lake Burn 1998	

DATA DISCLAIMER:
No warranty is made by 3Pikas regarding data accuracy or completeness. Accuracy is limited to the scale, resolution, and date of source data. This document is for reference purpose only and is not intended for publication, copy, or distribution.

DATA SOURCE:
Base data: 1:50,000 Water, Stream, Road data CanVec (NRCAN), 1:50,000 Contour NTDB
Thematic data: 1:250,000 Settlement Lands (Geomatics Yukon),
Forest Fires History 2012 (Wildland Fire Management Branch, YG), Planning Boundary
(EMR Land Planning Branch, YG), Wetland (Ta'an Kwäch'än Council).

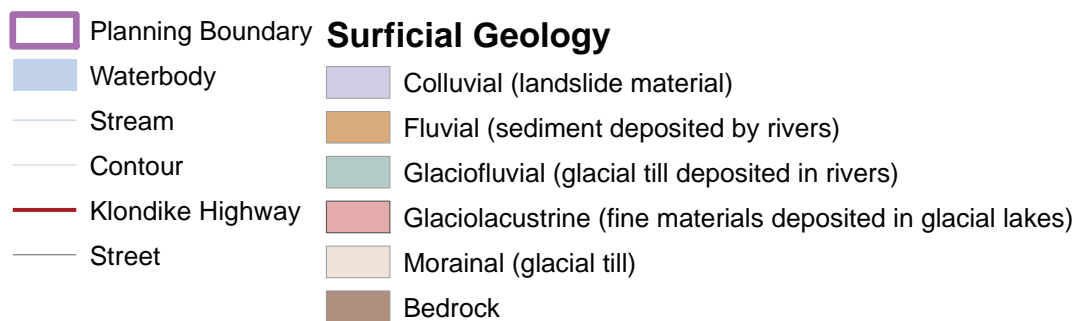
Yukon Albers





Map 4. Surficial Geology

FOX LAKE LOCAL AREA PLAN



(A), (B), (C), (D)

See page 26 for Description

DATA DISCLAIMER:
No warranty is made by 3Pikas regarding data accuracy or completeness. Accuracy is limited to the scale, resolution, and date of source data. This document is for reference purpose only and is not intended for publication, copy, or distribution.

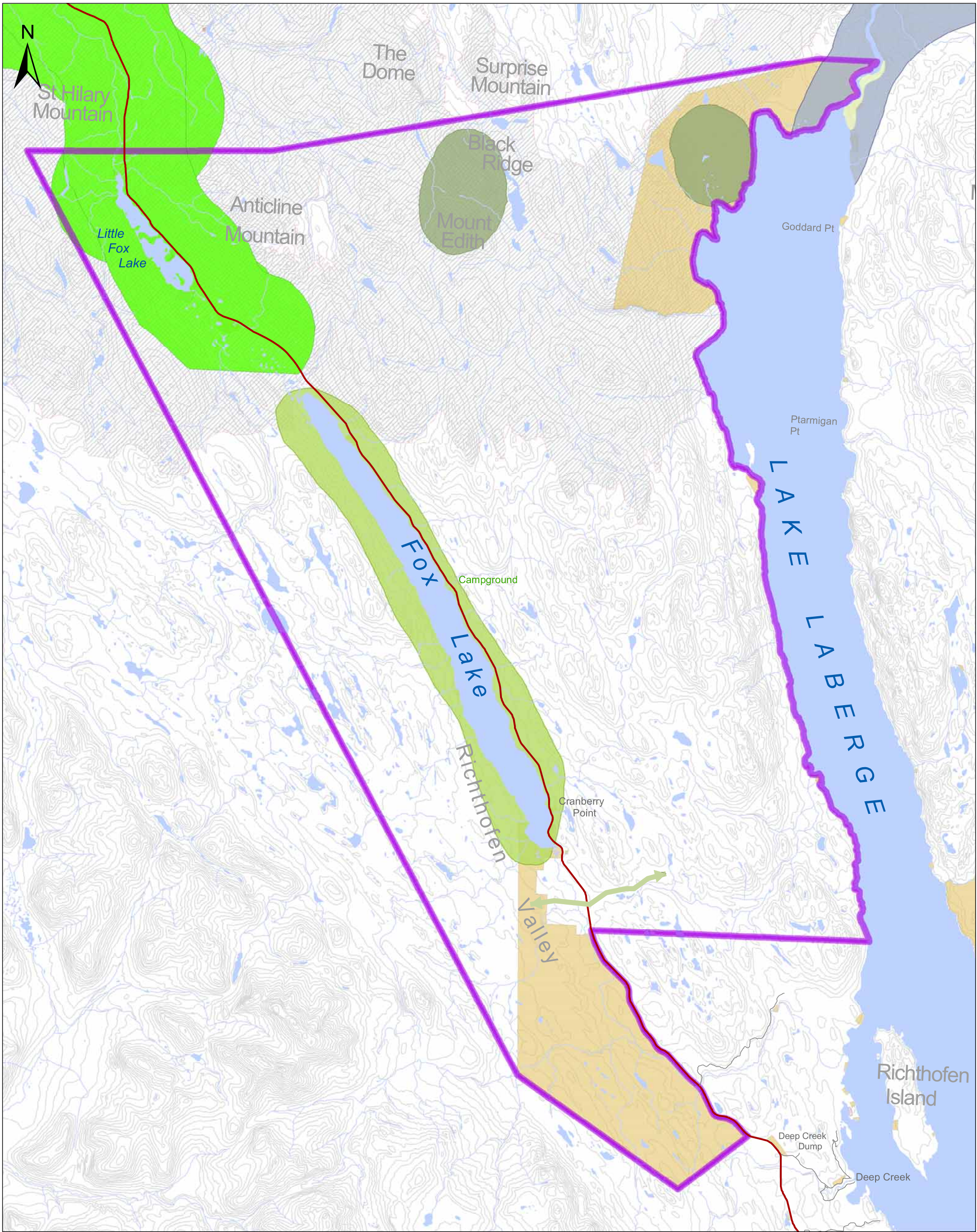
DATA SOURCE:
Base data: 1:50,000 Water, Stream, Road data CanVec (NRCAN), 1:50,000 Contour NTDB
Thematic data: 1:250,000 Settlement Lands (Geomatix Yukon),
Forest Fires History 2012 & Forest Activities (Wildland Fire Management Branch, YG).

Yukon Albers



URBAN
systems

3Pikas



Map 5. Key Wildlife Areas

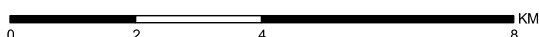
FOX LAKE LOCAL AREA PLAN

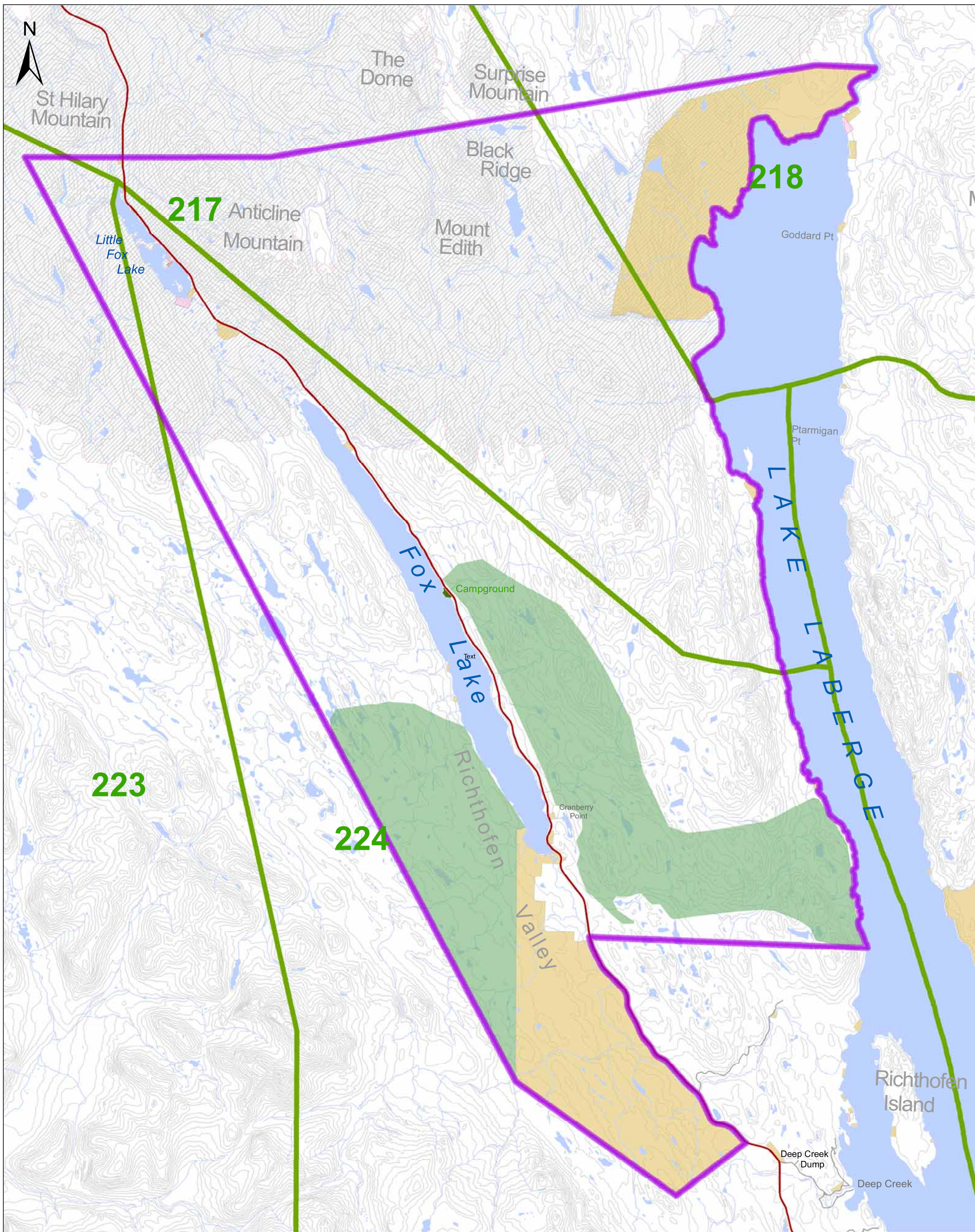
- | | | | |
|-------------------|------------------------|--------------------|------------------------------------|
| Planning Boundary | First Nation | Forest Fire | Bald Eagle, summer (Jun-Aug) |
| Waterbody | Kwanlin Dün | Fox Lake Burn 1998 | Elk, year round |
| Stream | Little Salmon Carmacks | | Riparian Raptor, summer (Jun-Aug) |
| Contour | Ta'an Kwäch'än | | Duck and Swan, spring (Apr-Jun) |
| Klondike Highway | | | Woodland Caribou, winter (Oct-Apr) |
| Street | | | Wildlife Corridor |

DATA DISCLAIMER:
No warranty is made by 3Pikas regarding data accuracy or completeness. Accuracy is limited to the scale, resolution, and date of source data. This document is for reference purpose only and is not intended for publication, copy, or distribution.

DATA SOURCE:
Base data: 1:50,000 Water, Stream, Road data CanVec (NRCAN), 1:50,000 Contour NTDB
Thematic data: 1:250,000 Settlement Lands (Geomatics Yukon), Forest Fires History 2012 (Wildland Fire Management Branch, YG), Planning Boundary (EMR Land Planning Branch, YG), Titled Land (NRCAN), Key Wildlife Area 2014 (Environment YG)

Yukon Albers





Map 6. Recreation & Traplines

FOX LAKE LOCAL AREA PLAN

- | | | |
|-------------------|------------------------|--|
| Planning Boundary | First Nation | Forest Fire |
| Waterbody | Kwanlin Dün | Fox Lake Burn 1998 |
| Stream | Little Salmon Carmacks | Campground |
| Contour | Ta'an Kwäch'än | Community Values No TKC |
| Klondike Highway | | High Value Recreational Area For Residents |
| Street | | Trapline |

DATA DISCLAIMER:
No warranty is made by 3Pikas regarding data accuracy or completeness. Accuracy is limited to the scale, resolution, and date of source data. This document is for reference purpose only and is not intended for publication, copy, or distribution.

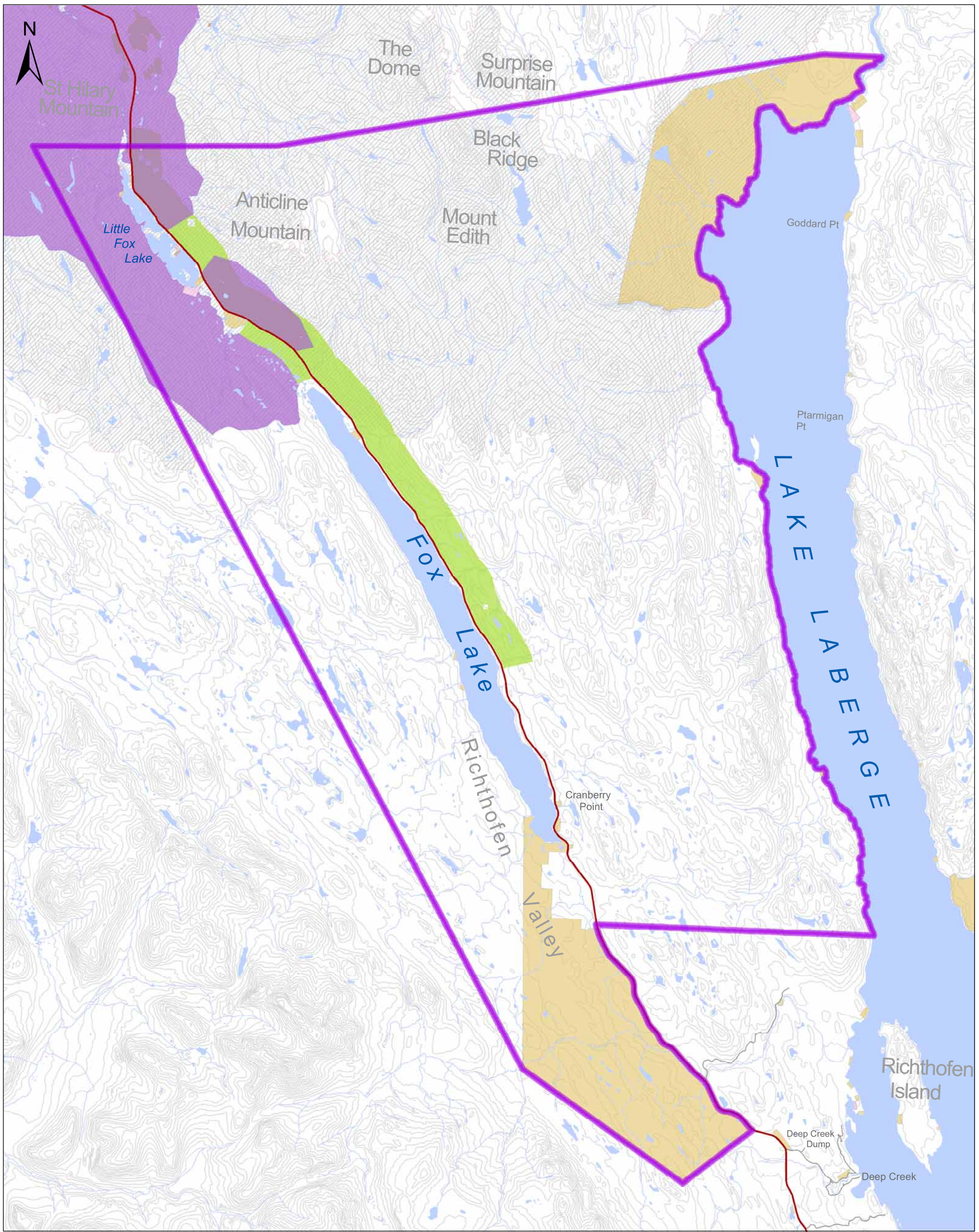
DATA SOURCE:
Base data: 1:50,000 Water, Stream, Road data CanVec (NRCAN), 1:50,000 Contour NTDB
Thematic data: 1:250,000 Settlement Lands (Geomatix Yukon),
Forest Fires History 2012 (Wildland Fire Management Branch, YG), Community Values (Urban Systems).

Yukon Albers



URBAN
systems

3Pikas



Map 7. Forestry

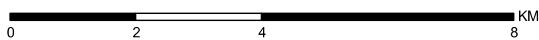
FOX LAKE LOCAL AREA PLAN

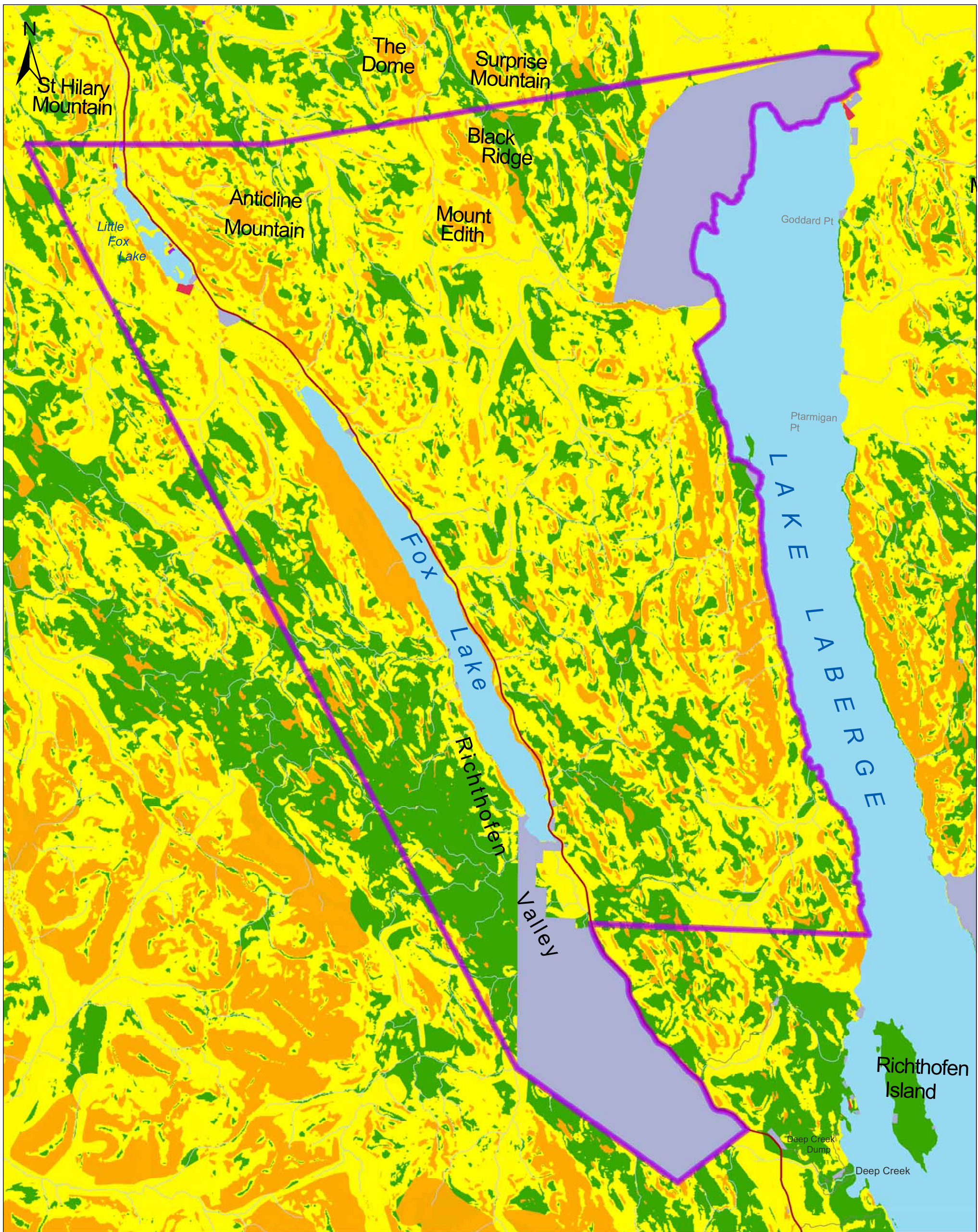
- | | | |
|-------------------|------------------------|--------------------------|
| Planning Boundary | First Nation | Forest Activities |
| Waterbody | Kwanlin Dün | Personal Fuel Wood Area |
| Stream | Little Salmon Carmacks | Timber Harvest Plan Area |
| Contour | Ta'an Kwäch'än | |
| Klondike Highway | Forest Fire | |
| Street | Fox Lake Burn 1998 | |

DATA DISCLAIMER:
No warranty is made by 3Pikas regarding data accuracy or completeness. Accuracy is limited to the scale, resolution, and date of source data. This document is for reference purpose only and is not intended for publication, copy, or distribution.

DATA SOURCE:
Base data: 1:50,000 Water, Stream, Road data CanVec (NRCAN), 1:50,000 Contour NTDB
Thematic data: 1:250,000 Settlement Lands (Geomatics Yukon),
Forest Fires History 2012 & Forest Activities (Wildland Fire Management Branch, YG).

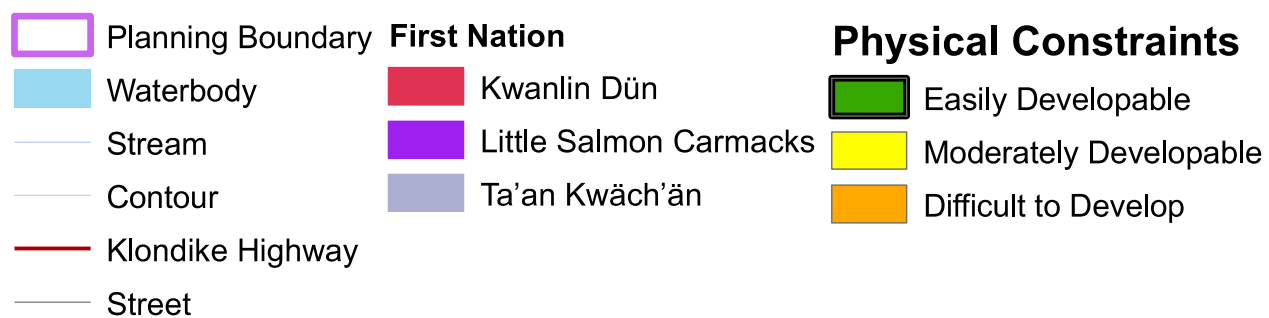
Yukon Albers





Map 8. Physical Constraints

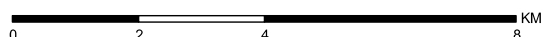
FOX LAKE LOCAL AREA PLAN



DATA DISCLAIMER:
No warranty is made by 3Pikas regarding data accuracy or completeness. Accuracy is limited to the scale, resolution, and date of source data. This document is for reference purpose only and is not intended for publication, copy, or distribution.

DATA SOURCE:
Base data: 1:50,000 Water, Stream, Road data CanVec (NRCAN), 1:50,000 Contour NTDB
Thematic data: 1:250,000 Settlement Lands (Geomatics Yukon), Forest Fires History 2012
(Wildland Fire Management Branch, YG), Planning Boundary (EMR Land Planning, Branch YG),
1:250,000 Surficial Geology (Yukon Geological Survey)

Yukon Albers



URBAN
systems

3Pikas