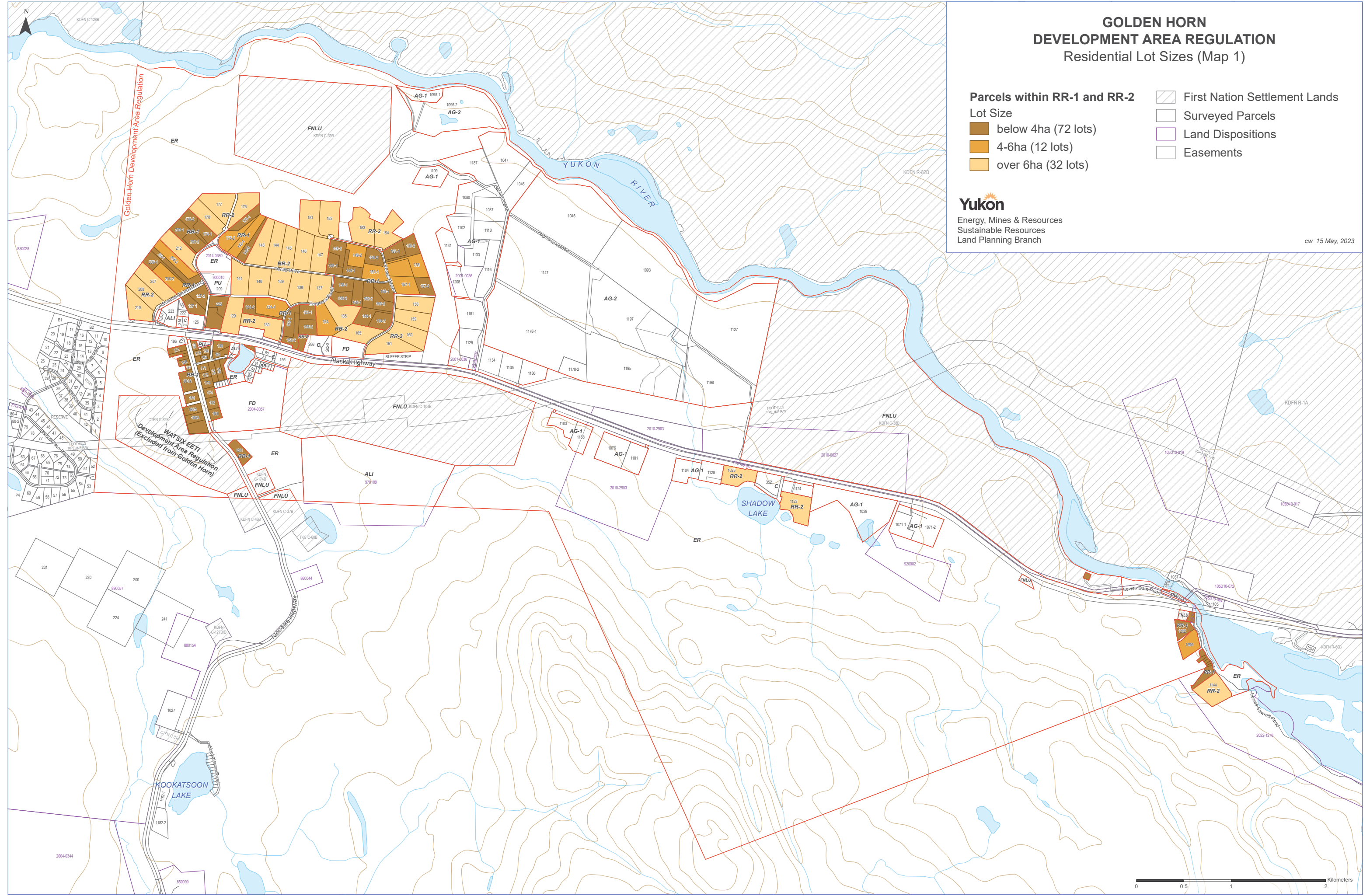


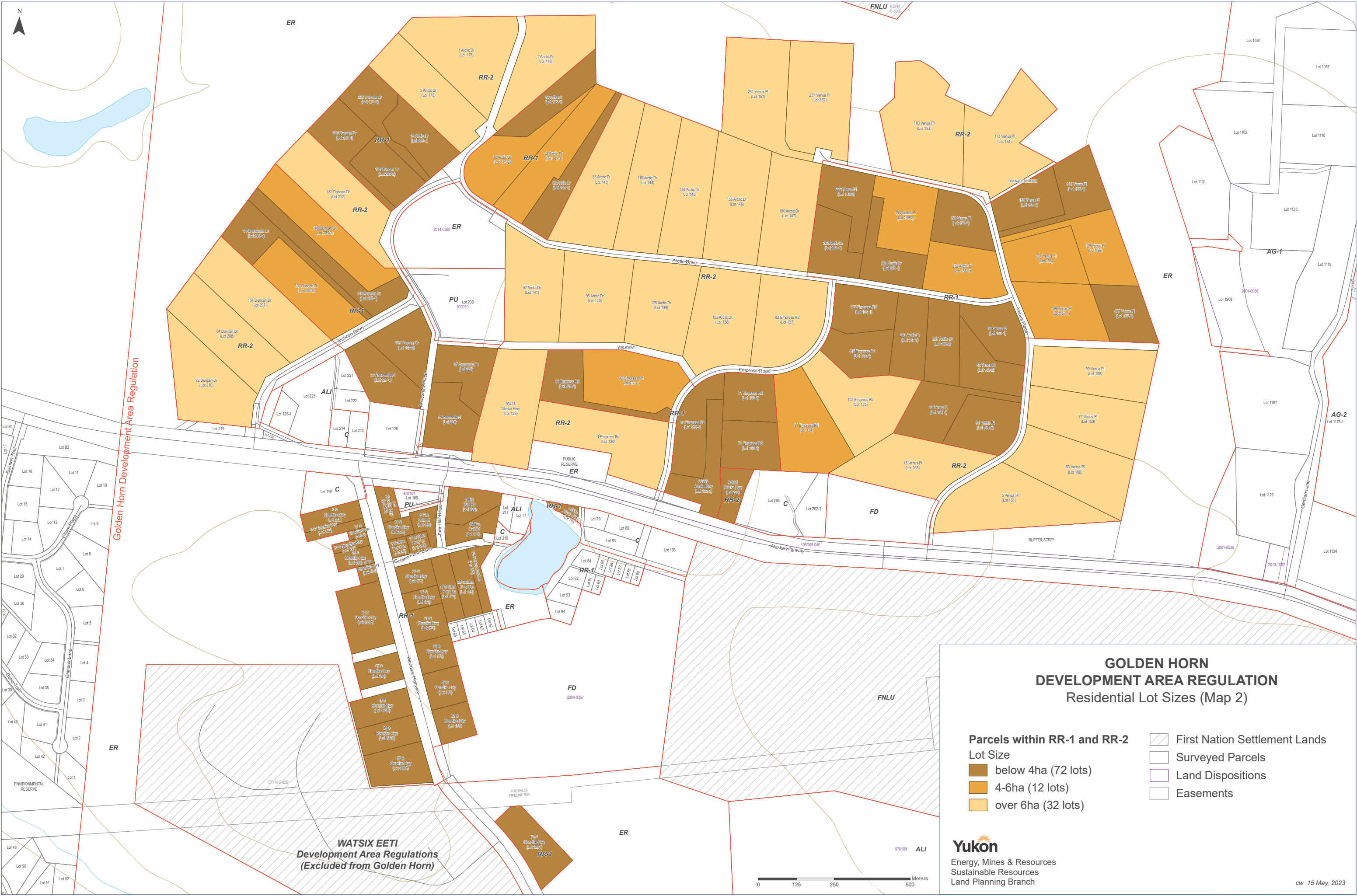
GOLDEN HORN DEVELOPMENT AREA REGULATION Residential Lot Sizes (Map 1)

- | | |
|-------------------------------------|-------------------------------|
| Parcels within RR-1 and RR-2 | First Nation Settlement Lands |
| Lot Size | Surveyed Parcels |
| below 4ha (72 lots) | Land Dispositions |
| 4-6ha (12 lots) | Easements |
| over 6ha (32 lots) | |

Yukon
Energy, Mines & Resources
Sustainable Resources
Land Planning Branch

cw 15 May, 2023





Golden Horn Development Area Regulation

WATSIX EETI
Development Area Regulations
(Excluded from Golden Horn)

**GOLDEN HORN
DEVELOPMENT AREA REGULATION**
Residential Lot Sizes (Map 2)

- | | |
|-------------------------------------|-------------------------------|
| Parcels within RR-1 and RR-2 | First Nation Settlement Lands |
| Lot Size | Surveyed Parcels |
| below 4ha (72 lots) | Land Dispositions |
| 4-6ha (12 lots) | Easements |
| over 6ha (32 lots) | |

Yukon
Energy, Mines & Resources
Sustainable Resources
Land Planning Branch