

# Cruise ship visits to the Yukon North Slope

## What you need to know

This information sheet provides guidance and contact information to assist with applying for the appropriate authorizations and permits needed for commercial and tourist visits to the Yukon North Slope in the Inuvialuit Settlement Region.

If your desired itinerary includes going ashore on the Yukon North Slope, the first step is to contact the Inuvialuit Regional Corporation and the Inuvialuit Game Council to initiate engagement with Inuvialuit. The second step is to submit a proposal to the Environmental Impact Screening Committee (EISC). All proposed commercial activities in the Inuvialuit Settlement Region both onshore and offshore must undergo a review with the EISC.

Please ensure the information you submit to the EISC aligns with your expedition plans, and that you contact these groups well in advance of your itinerary.

## What is the Environmental Impact Screening Committee (EISC) process?

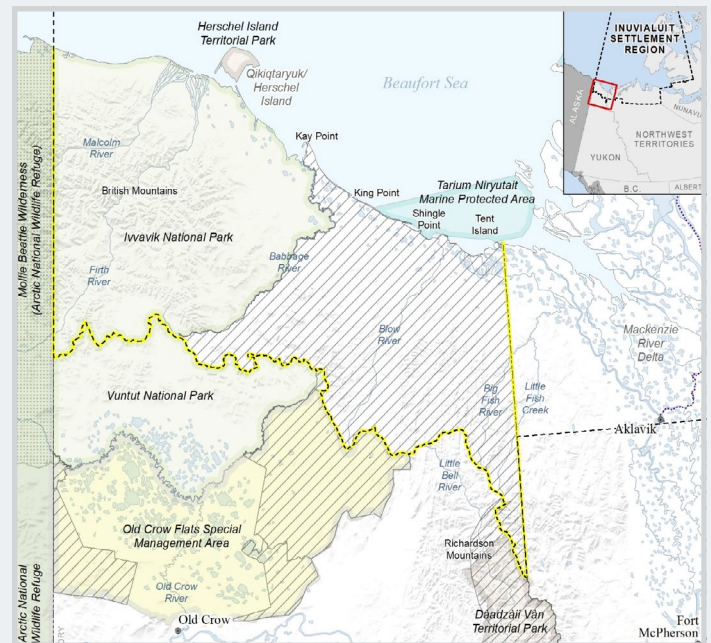
The Environmental Impact Screening Committee is responsible for reviewing proposals in the Inuvialuit Settlement Region. It determines whether a commercial activity may have a negative impact on wildlife, the environment, or Inuvialuit activities on the land such as hunting. You must submit your proposal, including all planned activities, to EISC for review at least 60 days before the start date of your excursion. However, it is strongly recommended that you initiate this process up to six months in advance of your visit to ensure Inuvialuit communities are given an opportunity to review the proposal and provide feedback.

Detailed information and instructions on how to submit your proposal can be found on the EISC website at [www.screeningcommittee.ca](http://www.screeningcommittee.ca).

## Where is the Yukon North Slope?

The North Slope is the northernmost part of Yukon, between the Northwest Territories to the east, and Alaska to the west.

Warming oceans and rapidly melting sea ice have opened up previously inaccessible areas. The rich cultural history, rugged beauty, and newly accessible travel routes have made the western Arctic an attractive tourism destination.



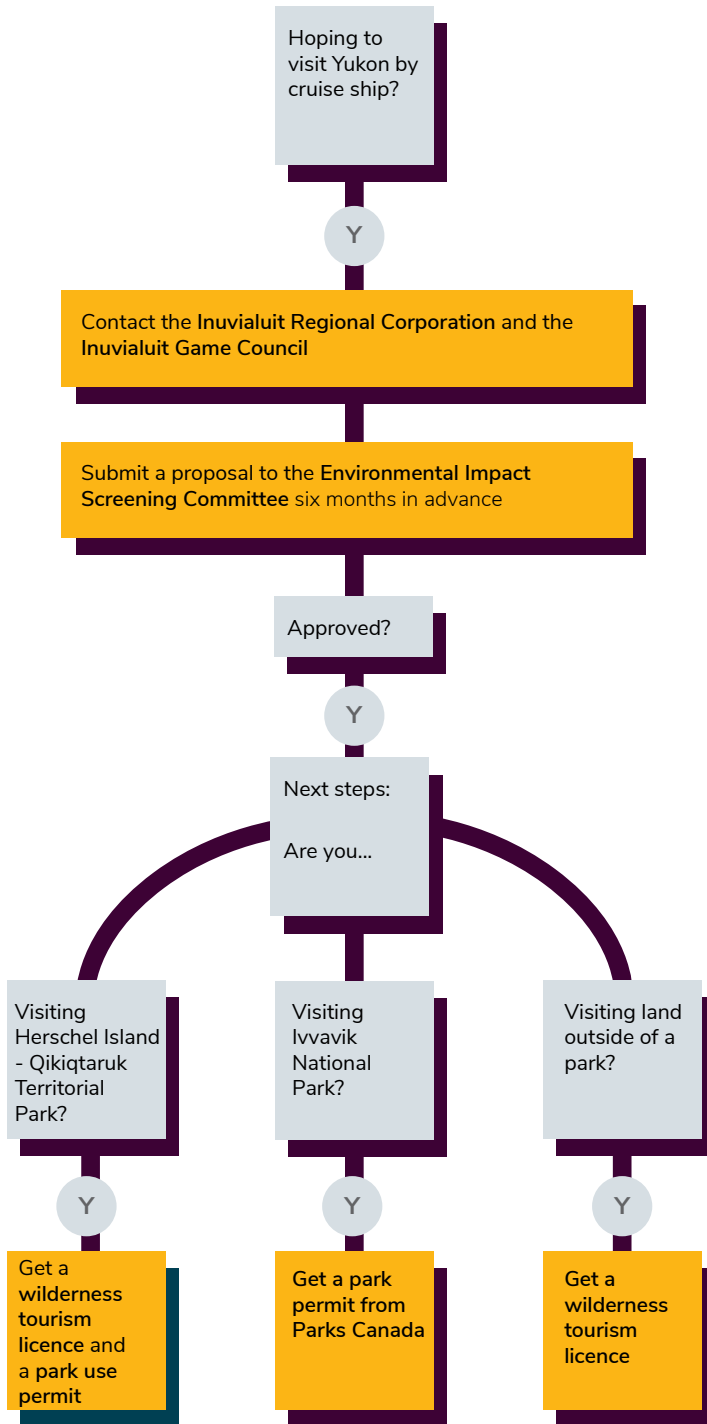
Yukon North Slope outlined in yellow.

## Who manages the Yukon North Slope?

The Yukon North Slope is part of the Inuvialuit Settlement Region as identified in the Western Arctic Claim Inuvialuit Final Agreement. The Yukon North Slope is collaboratively managed by the Government of Yukon, Inuvialuit Regional Corporation, Inuvialuit Game Council and Government of Canada in accordance with the Inuvialuit Final Agreement.



## Planning a visit to the Yukon North Slope



Contact the Inuvialuit Regional Corporation and the Inuvialuit Game Council early in your planning stages to confirm alignment with the *Inuvialuit Final Agreement* and Inuvialuit policies.

**Inuvialuit Regional Corporation:**  
[info@inuvialuit.com](mailto:info@inuvialuit.com) or 867-777-7000

**Inuvialuit Game Council:**  
[igc-rp@jointsec.nt.ca](mailto:igc-rp@jointsec.nt.ca) and [igc-c@jointsec.nt.ca](mailto:igc-c@jointsec.nt.ca) or  
 867-777-2828

## What else do I need if I want to stop on/visit the Yukon North Slope?

If your planned visits ashore are approved by the EISC, you will also require other permits or licences depending on your submitted itinerary stops.

### Visiting Herschel Island - Qikiqtaruk Territorial Park

Qikiqtaruk or “Big Island” in the Inuvialuktun language, was designated as a Natural Environment Park in 1987. If you wish to visit Herschel Island – Qikiqtaruk you will need to acquire a wilderness tourism license first, and then apply for a Yukon park use permit. A park use permit outlines the terms and conditions you will need to follow during your visit to Herschel Island – Qikiqtaruk. We recommend you apply for both of these permits at least six months before the start date of your excursion. You can email the park permitting office at [parkpermits@gov.yk.ca](mailto:parkpermits@gov.yk.ca), or call 867-667-5648.

For more information on:

- Park use permits, visit [Yukon.ca/park-permit](http://Yukon.ca/park-permit)
- Wilderness tourism licensing, visit [Yukon.ca/wilderness-tourism](http://Yukon.ca/wilderness-tourism)
- Herschel Island – Qikiqtaruk Territorial Park, visit [Yukon.ca/herschel-island-qikiqtaruk-territorial-park](http://Yukon.ca/herschel-island-qikiqtaruk-territorial-park)

### Visiting Ivvavik National Park

Ivvavik National Park is located in the northwest corner of the Yukon Territory, above the Arctic Circle on the Beaufort Sea. Ivvavik, meaning “a place for giving birth, a nursery,” in the Inuvialuktun language, is a critical refuge for barren-ground caribou.

If you wish to visit Ivvavik National Park, please contact the Parks Canada Western Arctic Field Unit Office at [pc.infoinuvik-inuvikinfo.pc@canada.ca](mailto:pc.infoinuvik-inuvikinfo.pc@canada.ca), or at 867-777-8800. For more information, visit <https://www.pc.gc.ca/en/pn-np/yt/ivvavik>.

### Visiting land in the Yukon North Slope outside of a park

If your approved itinerary includes going ashore on the Yukon North Slope outside of the National or Territorial Park, you will need a Yukon wilderness tourism licence under the *Wilderness Tourism Licensing Act*. See [Yukon.ca/wilderness-tourism](http://Yukon.ca/wilderness-tourism).