

Mapping wetlands in Mayo and McQuesten watersheds

Project objectives

We are conducting this project to:

1. Develop a wetland inventory to better map and predict where wetlands can be found.
2. Map where different classes of wetlands (bogs, fens, marshes, swamps and shallow open water) can be found within the Mayo and McQuesten watersheds.

Project overview

Wetlands are consistently identified as valued ecosystems through environmental assessment and land use planning processes. We have broad-scale (territorial or national) products that provide general overviews of where wetlands are, but we need more detailed, local mapping products to inform watershed management, project assessments, regulatory processes and future planning efforts.

This project seeks to fill some of that gap in information for two areas: the Mayo and McQuesten watersheds, with current and anticipated exploration and development pressure.



Study area

The project is taking place within the Mayo and McQuesten drainages, near Mayo, Yukon

For more information, please contact

Nadele Flynn
Ecological and landscape classification coordinator
Nadele.Flynn@yukon.ca
867-667-3081

Tyler Kuhn
Senior biologist, habitat
Tyler.Kuhn@yukon.ca
867-667-3538

FWTB-2021-004



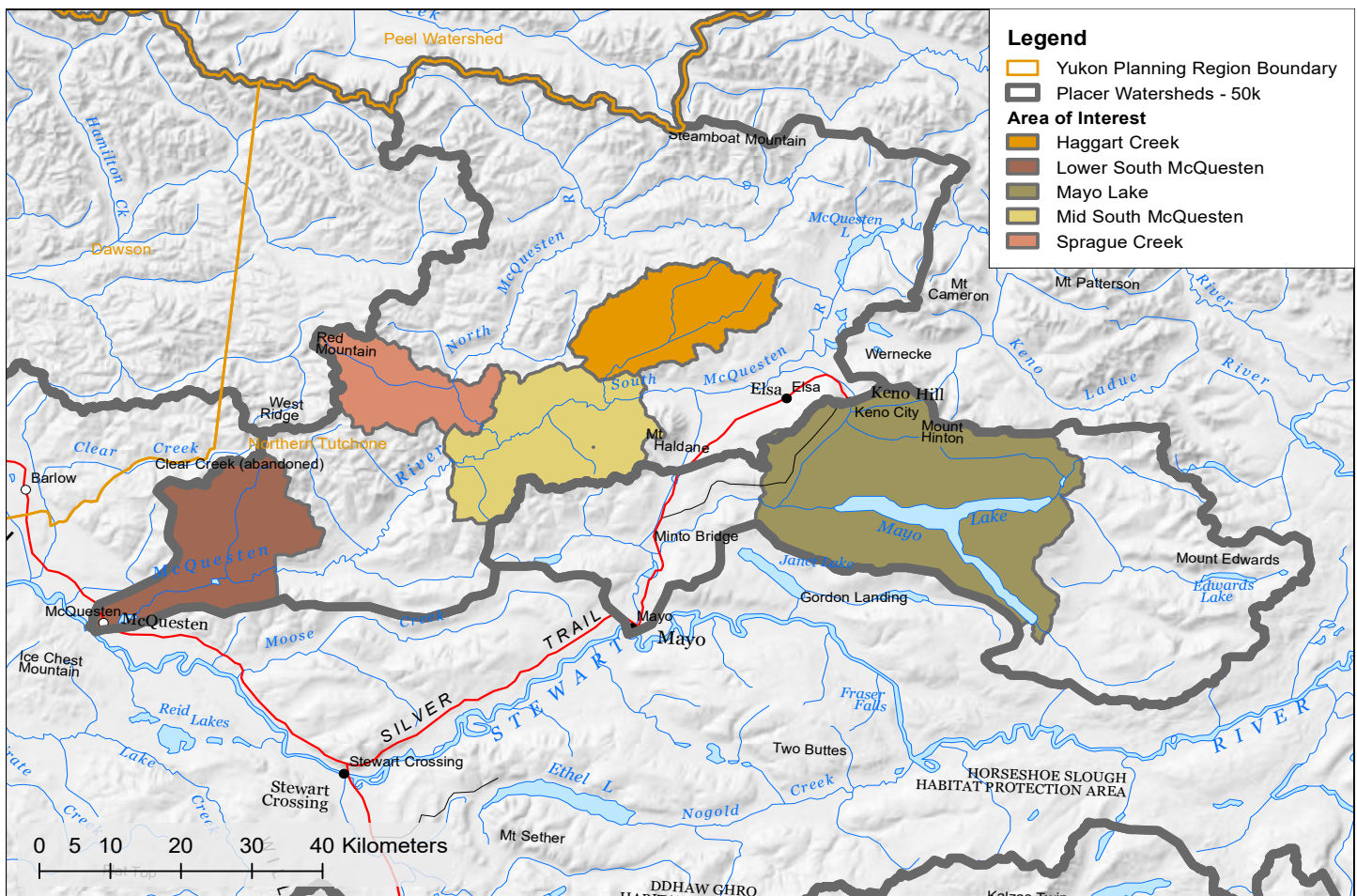
Using an auger to sample the soil of a sedge marsh to determine its characteristics.

Importance to land management

The goal is to provide more publicly-available information to all land users, assessors, regulators and other stakeholders. A public map will ensure greater certainty and clarity on what is and what is not a wetland within the Mayo and McQuesten watersheds at a scale suitable for project-by-project decisions. The map will help ensure more consistency and transparency in land-use decision-making processes and outcomes. For example, where mining interests are implicated in project reviews, all interested parties will be able to use the same wetland map when evaluating proposed project activities and identifying potential mitigation measures.

What does wetland mapping involve

Wetland inventory and mapping involves determining where different kinds of wetlands are found within a particular area. For this project, contractors and a Government of Yukon wetland ecology team will be evaluating where different classes of wetlands (bogs, fens, marshes, swamps and shallow open water) are in the Mayo and McQuesten areas. This involves both on-the-ground work to look at the soils, vegetation and other physical characteristics present in particular areas, along with satellite imagery to manually trace the boundaries of these five wetland classes.



Sub-drainage areas of interest within the Mayo and McQuesten watersheds. These areas represent a diversity of places where wetlands and current or anticipated exploration and development pressures overlap.

