



COVID-19 Vaccine Guide for Immunizers

February 2021

A decorative graphic at the bottom of the page consists of several overlapping, wavy lines in various colors including blue, green, yellow, and purple, creating a sense of movement and energy.

Table of Contents

PRODUCT INFORMATION.....	3
INDICATIONS:.....	3
DOSES and SCHEDULE:	3
ADMINISTRATION	3
STORAGE AND HANDLING:.....	3
BOOSTER DOSES:	4
SEROLOGICAL TESTING:.....	4
CONTRAINDICATIONS:	4
PRODUCT COMPONENTS:.....	4
PRECAUTIONS:.....	5
SPECIAL CONSIDERATIONS:.....	5
ADVERSE EVENTS:	6
REFERENCES:	6
APPENDIX: HOW TO STORE and THAW PRODUCT	7

PRODUCT INFORMATION

COVID-19 Vaccine mRNA-1273

Supplier: Moderna

INDICATIONS:

- Vaccination will occur in phases
 - Sequencing of populations for whom the vaccine is currently indicated in Yukon is outline in the [vaccine roll-out schedule](#)
 - The vaccine is **not approved** for use in those less than 18 years of age.
-

DOSES and SCHEDULE:

Adults 18 years of age and older: 2 doses given as 0.5mL IM, 28 days apart.¹²³⁴

ADMINISTRATION:

- **No reconstitution required**
 - After thawing, inspect the vial to ensure there is no particulate and no discoloration. If any is observed do not administer the vaccine. **DO NOT REFREEZE THAWED VIALS!**
-

STORAGE AND HANDLING:

- The vaccine can be stored at:
 - -20°C (-25°C to -15°C) up to the end of its expiry date, kept in the original packaging and protected from light. Do not store on dry ice.
 - +2°C to +8°C for up to 30 days prior to first use, protected from light.
 - Room temperature (up to +25°C) for up to 12 hours.
 - After first vial puncture, the vaccine must be used within 6 hours.
 - The vaccine can be pre-loaded into a syringe for up to 6 hours.
 - Ensure that the vial/syringe is clearly labelled with the date and time of first vial entry.
- Product should be thawed/held prior to use, in one of the following three ways:
 - From the freezer to room temperature; will require 1 hour to thaw
 - From the freezer to the refrigerator; will require 2 hours and 30 minutes to thaw, and then requires at least 15 minutes at room temperature prior to administration.
 - Swirl the vial gently after thawing and between each withdrawal. Do not shake.
- **Do not refreeze thawed vials**

¹ The vaccine series should be completed with the same COVID-19 vaccine product. There is no data available on the interchangeability of COVID-19 vaccines.

² If administration of the second dose is delayed, the second dose should be provided as soon as possible and the series does not need to be restarted.

³ The minimum interval between doses is 21 days. For optimal response, immunizers should observe recommended intervals as much as possible, however, doses given earlier than recommended may still be considered valid and need not be repeated if minimum intervals are observed.

⁴ Interval accepted in clinic trials was a minimum of 21 to a maximum of 42 days apart

Summary of Vial Thawing and Storage:

Store at frozen temperature upon receiving vaccines in: Freezer (-15°C to -25°C) Credo Cube (-15°C to -25°C)	Regular Use	Step 1	Step 2
		Thaw in refrigerator (+2°C to +8°C): <ul style="list-style-type: none"> - Thaw for 2.5 hours - Store in refrigerator for up to 30 days - Label with date and time 	Bring to room temperature (up to 25°C): <ul style="list-style-type: none"> - May be kept at room temperature for up to 12 hours **but when brought to room temperature do not put back into fridge - Once vial is punctured must be used within 6 hours
	Immediate Use	Step 1	
		Thaw to room temperature (up to +25°C) for 1 hour: <ul style="list-style-type: none"> • Keep at room temperature for up to 12 hours **but when brought to room temperature do not put back into fridge • Once vial is punctured must be used within 6 hours 	

BOOSTER DOSES:

No booster doses are recommended at this time.

SEROLOGICAL TESTING:

Serological testing is not recommended at this time.

CONTRAINDICATIONS:

1. History of anaphylactic reaction to a previous dose of the vaccine or to any component of the vaccine

PRODUCT COMPONENTS:

Potential allergens: 1,2-dimyristoyl-rac-glycero-3-methoxypolyethylene glycol-2000 (PEG2000- DMG). **Other components:** cholesterol; 1,2-distearoyl-sn-glycerophosphocholine (DSPC); tromethamine; tromethamine hydrochloride; acetic acid, sodium acetate, sucrose

PRECAUTIONS:

- For the following populations, a complete COVID-19 vaccine series may be offered to individuals in the authorized age group if a risk assessment deems that the benefits outweigh the potential risks for the individual, and if informed consent includes discussion about the absence of evidence on the use of COVID-19 vaccine in these populations:
 - immunosuppressed due to disease or treatment or those with an autoimmune disorder
 - pregnancy and breastfeeding (for more information see the [SOGC Statement on COVID-19 Vaccination in Pregnancy](#))
 - For individuals with suspected hypersensitivity or non-anaphylactic allergy to COVID-19 vaccine components, consultation with an allergist is advised. If there is a specific concern about a possible allergy to a component of the COVID-19 vaccine being administered, an extended period of observation post-vaccination of 30 minutes may be warranted; alternately, the vaccine can be administered in an emergency room setting, also with a prolonged observation period.
 - Wait until symptoms of an acute illness are resolved before vaccinating with COVID-19 vaccine to differentiate symptoms of illness from vaccine side effects.
 - There is insufficient evidence on the receipt of both a COVID-19 vaccine and any monoclonal antibodies or convalescent plasma for treatment or prevention of COVID-19. Therefore, timing of administration and potential interference between these two products are currently unknown and expert clinical opinion should be sought on a case-by-case basis.
-

SPECIAL CONSIDERATIONS:

- COVID-19 vaccines should not be given simultaneously with other live or inactivated vaccines. However, if a COVID-19 vaccine is inadvertently administered at the same time as another vaccine, neither dose should be repeated.
 - Wait a period of at least 28 days after the administration of the complete two-dose vaccine series of an mRNA COVID-19 vaccine before the administration of another vaccine (except in the case where another vaccine is required for post-exposure prophylaxis) due to the elicitation of an inflammatory cytokine response. Wait for a period of at least 14 days after the administration of another vaccine before administering a COVID-19 vaccine
 - A complete series of COVID-19 vaccine may be offered to individuals without contraindications who have recovered from PCR-confirmed SARS-CoV-2 infection.
 - Recipients should practice public health measures for prevention of SARS-CoV-2 infection and transmission regardless of vaccination with COVID-19 vaccine, at this time.
-

ADVERSE EVENTS:

Local: pain, swelling, redness, delayed localized reactions, with onset on or after day 8 following vaccination, may occur in a small percentage of vaccine recipients, mostly after the first dose.

Systemic: fatigue, headache, myalgia, chills, arthralgia, fever, nausea and vomiting.

REFERENCES:

1. Product monograph https://pdf.hres.ca/dpd_pm/00059305.PDF
2. [NACI: Recommendations on the use of COVID-19 Vaccine\(s\)](#)

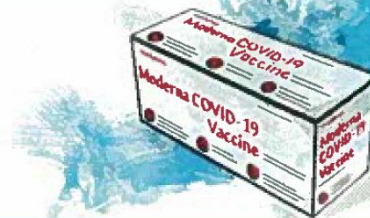
APPENDIX: HOW TO STORE and THAW PRODUCT

Frozen Storage

Can be stored frozen until expiration date

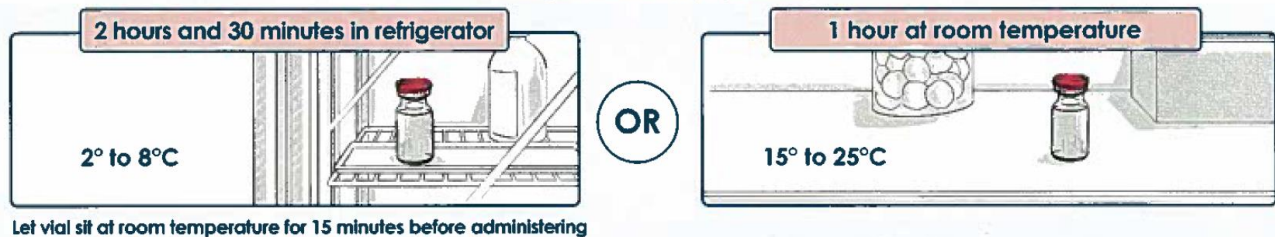
-25° to -15°C

Do not store on dry ice or below -40°C
Store in the original carton to protect from light.



Thaw Each Vial Before Use

Vial images for illustrative purposes only



Thawed Shelf Life

Unpunctured Vial

30 days Maximum times
Refrigerator
2° to 8°C

12 hours Cool storage up to room temperature
8° to 25°C

A simple line drawing of a glass vial with a red cap, containing a small amount of liquid. The background is a light blue wash.

After first dose has been withdrawn

6 hours Maximum time
Refrigerator or room temperature

Vial should be held between 2° to 25°C. Record the date and time of first use on the vial label.
Discard punctured vial after 6 hours.

A simple line drawing of a glass vial with a red cap, containing a small amount of liquid. The background is a light green wash.

NEVER refreeze thawed vaccine