



**Government of Yukon
Gender-inclusive washroom and change room
design standards**

Updated:
February 2022

The content of this document is extracted from the Government of Yukon gender-inclusive washrooms standards and specifications report prepared by Republic Architecture Inc., June 2018.

Republic Architecture Inc.
385 St Mary Ave.
Winnipeg, MB. R3C 0N1
T: 204-989-0102 F: 204-989-0094
www.republicarchitecture.ca

Table of Contents

1.0 Executive summary	4
2.0 Glossary	5
3.0 Program analysis	6
4.0 Basis of design	8
4.1 Washroom guidelines for new builds and renovations	8
4.2 Change room guidelines for new builds and renovations	12
5.0 Signage	15

1.0 Executive summary

The Government of Yukon's building portfolio includes many owned and leased facilities. The Department of Highways and Public Works' Property Management Division (PMD) is the primary agent involved in planning, construction, operation and maintenance of the facilities for the government and is moving towards integrating gender-inclusive washrooms and change rooms in government owned and leased buildings.

Republic Architecture Inc. (RAI) was engaged by PMD to develop gender-inclusive washroom and change room design standards that will be used to supplement Government of Yukon's Design Requirements and Technical Standards Manual. As part of the scope of work, RAI engaged with various government departments in collaborative sessions to discuss existing facilities and the purpose of including gender-inclusive facilities in government buildings. The consultant team also reviewed existing site conditions in government facilities, including gender segregated and temporary gender-inclusive washrooms as well as gender segregated change rooms.

The purpose of this document is to provide scalable best practice design guidelines for gender-inclusive facilities for existing and new government buildings. These design standards are to ensure everyone has a safe, respectful and inclusive environment. Part of creating a private yet safe environment involves the use of privacy screens and full height toilet partitions as well as having specialized zoning with more than one access point. The gender-inclusive washroom and change room design standards will not only address gender identity but will also create an inclusive environment for people with disabilities and families, therefore, increasing privacy and safety for all users.

2.0 Glossary

Gender identity	A person's inherent sense of gender.
Gender segregated	Refers to facilities that are separated by gender and designated for one gender. For example, men's and women's washrooms.
Gender-inclusive	Refers to facilities that do not discriminate by gender. All are welcome to use the same facility.
Universal	Refers to facilities that can be used by those with all abilities and genders. This includes families and individuals with care givers.

3.0 Program analysis

Functional program requirements were determined based on workshop sessions, site visits and discussions with Property Management Division. Due to variations in the number of users, locations and building use, the following washroom and change room typologies have been established.

Typology	Area	Functional requirements
Single user gender-inclusive washroom	6.2 m ²	<ul style="list-style-type: none"> • Single toilet and lavatory • Door locking mechanism with indicator for occupancy • Change tables in all public washrooms • Signage to indicate gender-inclusive • A minimum of 20% of single washrooms to be accessible. When one single washroom is provided, it is to be accessible.
Multi user gender-inclusive washroom	Partitions	<ul style="list-style-type: none"> • Multiple toilets and lavatories • Toilet stall to be full height with dedicated mechanical and lighting for each stall • Sound transmission class (STC) rating of toilet stall partitions to be 35 or greater • Urinals, if provided, to be separated visually from the rest of washroom • Door locking mechanism on stall doors with indicator for occupancy • A minimum of 20% of stalls to be accessible to accommodate more than one (1) person, including grab bars • Lavatories in common area • Separated area for grooming ideal • Change tables in all public washrooms • Maze-type entrance — two (2) recommended • Signage to indicate gender-inclusive

<p>Multi user gender-inclusive change room</p>	<p>Varies</p>	<ul style="list-style-type: none"> • Multiple change rooms with showers • Stall partitions to be full height with dedicated mechanical and lighting for each stall • STC rating of partitions to be 35 or greater • Door locking mechanism on stall doors with indicator for occupancy • A minimum of 20% of stalls to be accessible to accommodate more than one (1) person, including grab bars • Benches • Clothing hooks • Lockers in common area • Maze-type entrance — two (2) recommended • Signage to indicate gender-inclusive
--	---------------	---

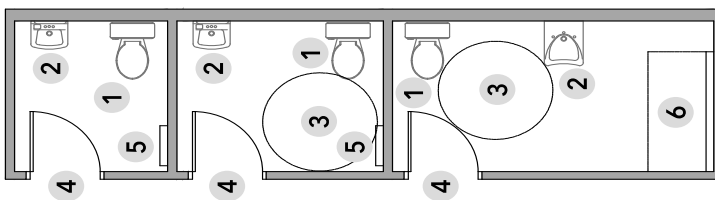
4.0 Basis of design

The following pages include proposed gender-inclusive washroom and change room layouts for new buildings and renovations. Layouts are based on the functional program identified in the previous section as well as the National Building Code and best practice design principles. New gender-inclusive washroom and change room layouts can be scaled if larger facilities are desired.

4.1 Washroom guidelines for new builds and renovations

Single-user washroom

- Room needs to be entirely enclosed.
- Include one toilet.
- Include one lavatory.
- Privacy door hardware with occupancy indicator.
- Ensure gender-inclusive (and accessible where applicable) signage is installed at the entrance.
- A minimum 20% of washrooms are to be universally accessible, ensure all applicable code requirements are met.
- A baby change table is to be included in all public washrooms.

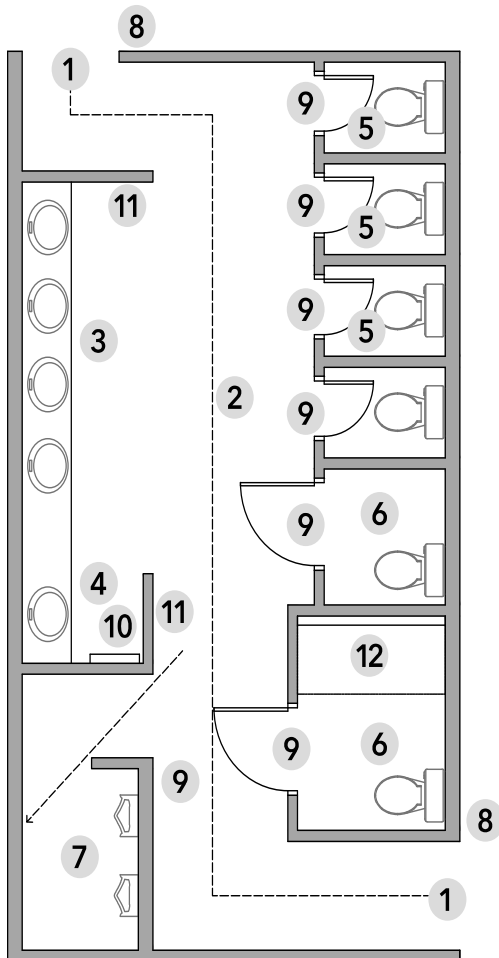


1. Toilet. Meet requirements of National Building Code where applicable.
2. Lavatory. Meet requirements of National Building Code where applicable.
3. Accessible requirements. Meet requirements of National Building Code in all accessible washrooms. Where multiple single-user washrooms are provided, a minimum of 20% shall be accessible.
4. Entrance signage. Ensure gender-inclusive washroom signage is installed in visible location at entrance of washroom. Include accessible signage where applicable.
5. Baby change table. At least one baby change table should be included in all public washrooms.
6. Adult change table. Optional fold down table.

Multiple-user washrooms

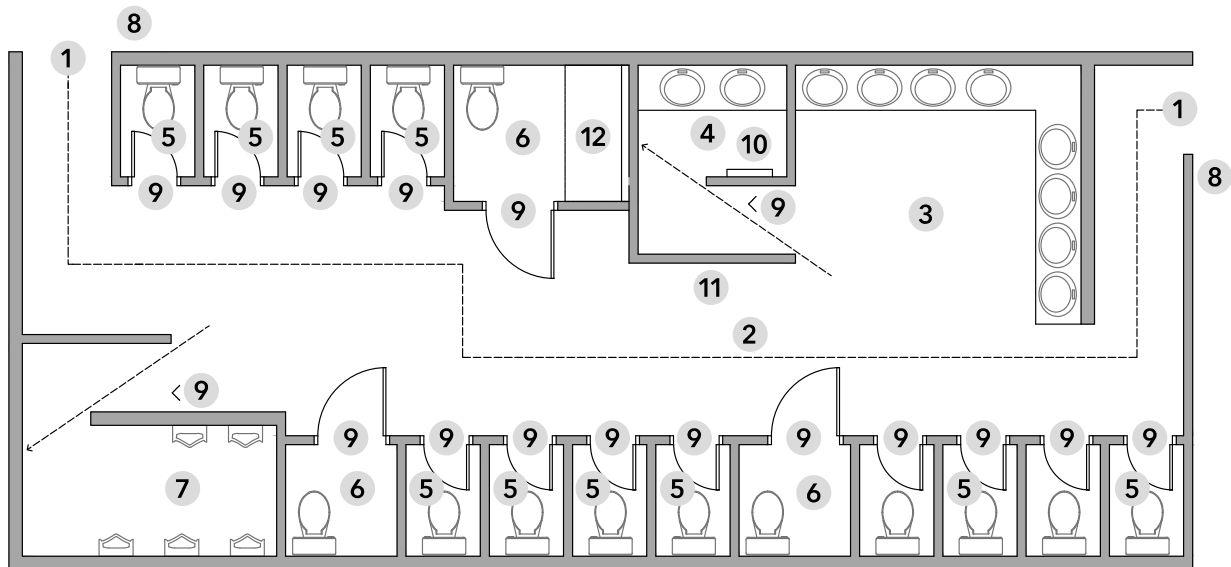
- Maze style entrance(s).
- Multiple entrances are strongly recommended although not required.
- Provide linear path between entrances, avoid dead-end corridors to the greatest extent possible.
- Provide lavatories (quantity determined by applicable building code).
- Optional: Private or semi-private grooming area with sink and mirror.
- Number of water closets to be determined by applicable building code, where WC counts are gender-segregated they are to be added together to get the total number. In the case of existing facilities, the number of WCs cannot be reduced.
 - Toilet stalls to be enclosed by full height partitions, minimum interior dimensions 1500mm X 1000mm.
 - Accessible toilet stalls enclosed by full height partitions, dimensions determined by applicable building code. Minimum 20% of toilets to be accessible.
 - Urinals must be configured such that they are visually private from the rest of the washroom. Maximum 25% of WCs are allowed to be urinals.
- All stall doors to have privacy door hardware with occupancy indicator.
- Ensure gender-inclusive (and accessible where applicable) signage is installed at the entrance.
- Ensure wayfinding/directional signage is installed throughout washroom.
- A baby change table is to be included in all public washrooms.

Small multiple-user washroom example



1. Maze style washroom entrance. While not a requirement, it is strongly recommended that multiple entrances be included where possible.
2. Linear path between entrances. Avoid dead end corridors to the greatest extent possible.
3. Lavatories. Quantity to be determined by building code requirements.
4. Semi-private grooming area. Optional sink and mirror with privacy screen.
5. Toilet stall. Partitions to be full-height walls. Recommended interior dimensions: 1000mm wide x 1500mm deep.
6. Accessible toilet stall. Meet requirements of National Building Code. Minimum 20% of toilets to be accessible.
7. Urinals. Configure so that visual privacy from the rest of the washroom is maintained. Maximum 25% of water closets allowed to be urinals.
8. Entrance signage. Ensure gender-inclusive washroom signage is installed in visible location at entrance of washroom.
9. Wayfinding signage. Provide wayfinding/directional signage throughout washroom.
10. Baby change table. All public washrooms to have a baby change table included.
11. Hand drying.
12. Adult change table. Optional fold down table.

Large multiple-user washroom example

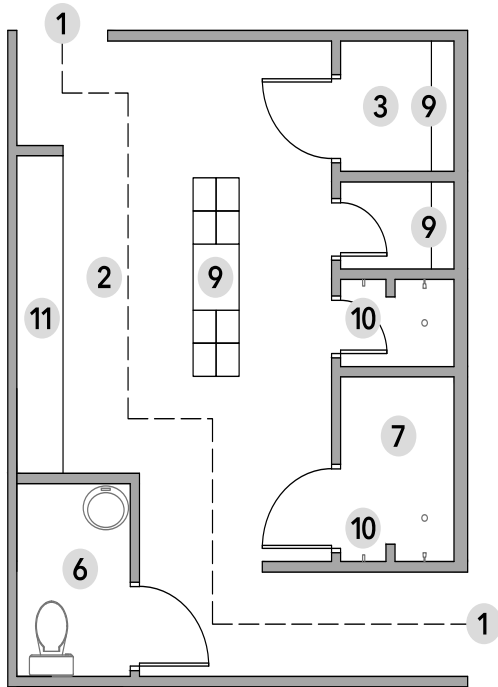


1. Maze style washroom entrance. While not a requirement, it is strongly recommended that multiple entrances be included where possible.
2. Linear path between entrances. Avoid dead end corridors to the greatest extent possible.
3. Lavatories. Quantity to be determined by building code requirements. Ensure requirements for accessible lavatories are met.
4. Private grooming area. Optional sink and mirror with visual privacy from the rest of the washroom.
5. Toilet stall. Partitions to be full-height walls. Recommended interior dimensions: 1000mm wide x 1500mm deep.
6. Accessible toilet stall. Meet requirements of National Building Code. Minimum 20% of toilets to be accessible.
7. Urinals. Configure so that visual privacy from the rest of the washroom is maintained. Maximum 25% of water closets allowed to be urinals.
8. Entrance signage. Ensure gender-inclusive washroom signage is installed in visible location at entrance of washroom.
9. Wayfinding signage. Provide wayfinding/directional signage throughout washroom.
10. Baby change table. All public washrooms to have a baby change table included.
11. Hand drying.
12. Adult change table. Optional fold down table.

4.2 Change room guidelines for new builds and renovations

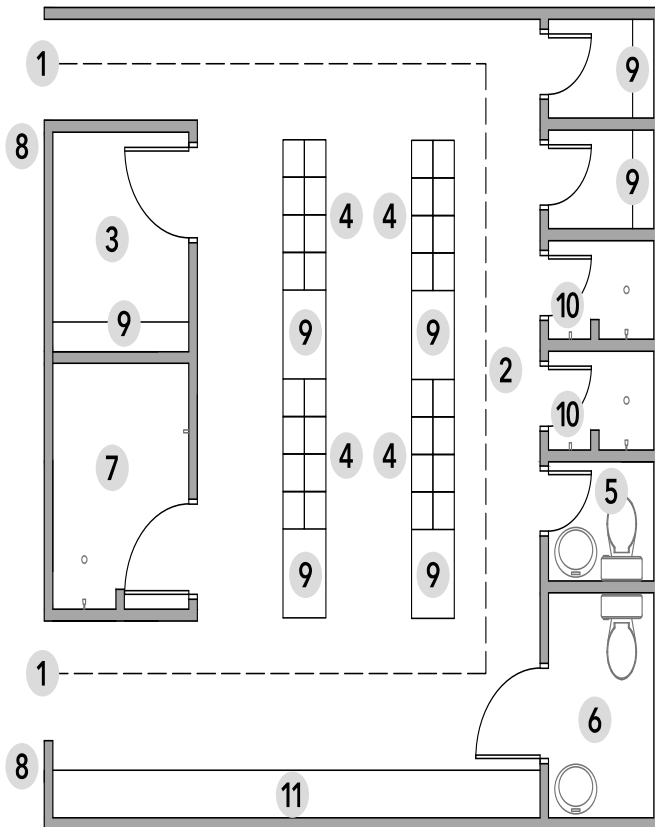
- Change stalls to be entirely enclosed.
- Include one bench in each change stall.
- Include one hook in shower stalls.
- Privacy door hardware with occupancy indicator on both change and shower stalls.
- Ensure gender-inclusive (and accessible where applicable) signage is installed on door.
- Maze-style entrance – two (2) recommended.
- Multiple entrances are strongly recommended although not required.
- Provide linear path between entrances, avoid dead-end corridors to the greatest extent possible.
- Provide grooming area with mirror.
- If water closets are to be included, the number of water closets to be determined by applicable building code, where WC counts are gendered they are to be added together to get the total number. In the case of existing facilities, the number of WCs cannot be reduced.
- Change and shower stalls to be enclosed by full height partitions, minimum interior dimensions 1500mm X 1000mm.
- Accessible change and shower stalls shall be enclosed by full height partitions, dimensions determined by applicable building code. Minimum 20% of change and shower stalls to be accessible.
- Ensure wayfinding/directional signage is installed throughout washroom.
- All partitions to have a minimum STC rating of 35 and to extend to underside of structure above.

Small change room example



1. Maze style washroom entrance. Multiple entrances have been included.
2. Linear path through change room. Avoid dead end corridors to the greatest extent possible.
3. Accessible change room stall.
4. Bank of lockers. Minimum 12" x 12" in size.
5. Single use toilet stall.
6. Accessible toilet stall. Meet requirements of National Building Code. 22% of toilets are accessible.
7. Accessible shower stall.
8. Entrance signage. Ensure gender-inclusive washroom signage is installed in visible location at entrance of washroom.
9. Bench area. Near lockers where possible and within change stall.
10. Shower stall hook.
11. Grooming area.

Large change room example



1. Maze style washroom entrance. Multiple entrances have been included.
2. Linear path through change room. Avoid dead end corridors to the greatest extent possible.
3. Accessible change room stall.
4. Bank of lockers. Minimum 12" x 12" in size.
5. Single use toilet stall.
6. Accessible toilet stall. Meet requirements of National Building Code. 22% of toilets are accessible.
7. Accessible shower stall.
8. Entrance signage. Ensure gender-inclusive washroom signage is installed in visible location at entrance of washroom.
9. Bench area. Near lockers where possible and within change stall.
10. Shower stall hook.
11. Grooming area.

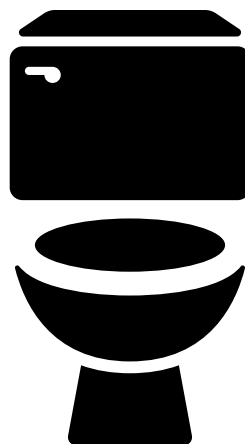
5.0 Signage

Signage is a key component of washroom and change room facilities as it serves to indicate not only function but also the users permitted to use the space. Traditionally, washroom spaces and signage have been gendered to reflect the use of the facilities for either men or women.

However, when signage is specifically gendered, those who have a gender identity that differs from what the signage indicates as permissible may experience difficulty or discomfort in even entering the space. As a basic civic right, all individuals – regardless of gender identity – need to have access to these types of facilities, and as such, the signage needs to reflect that all users are permitted to utilize these spaces. The following section includes washroom signage standards for Government of Yukon facilities, including details on symbols and typefaces to use, and with special consideration to accessibility.

Pictograms

Pictograms are symbol depictions that directly denote spatial typologies, and as such, are the most quickly-recognized element of any sign. Therefore, special attention has to be given to what is being represented by the selected standard pictogram. As the Government of Yukon is moving towards more gender-inclusive facilities, pictograms that include gender imagery (or any physical stereotypes of gender identity) are to be avoided. Therefore, the selected standard pictogram for washroom signage is the front view toilet as displayed below.



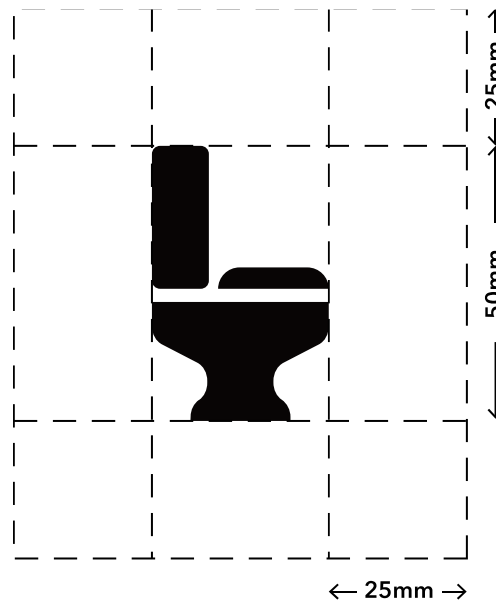
Two pictograms are commonly used for accessibility.

- a. Standard ISA – the current standard International Symbol of Access (ISA) is the most widely-recognized symbol for accessibility, and
- b. Modified ISA – depicting a more active wheelchair user.

Both options are acceptable for use, however there are issues with both that need to be recognized in order to properly select the standard accessibility icon for washroom signage in Government of Yukon assets. The current ISA has been criticized for not accurately depicting the abilities of those in wheelchairs, while those who criticize the modified ISA say that the new symbol is “ableist”, meaning that it favours those individuals with more physical ability than others. Of note as well is the fact that several key groups including the International Organization for Standardization, the organization that suggests – among many things – which symbols are the most acceptable to use across several countries, rejects the modified ISA. Therefore, the Government of Yukon has selected the standard ISA pictogram for accessibility as displayed below.



All washroom signs must feature the selected standard washroom symbol at a minimum of 50mm in height. Signage for National Building Code-compliant accessible washrooms must also include the selected standard symbol of accessibility, also at a minimum of 50mm in height. Symbols must be centered on the sign and be featured above all text, with at least 25mm of clearance around all sides of the symbols.



**The side facing toilet is only used to show measurements. The front facing toilet has been selected as the standard pictogram.*

Typography

It is recommended to use a Montserrat font in a bold weight with a stroke-width-to-height ratio between 1:5 and 1:10, at least 25mm in height, and has a letterform proportion between 3:5 and 1:1, as per the Canadian Standards Association Accessible Design for the Built Environment, but we recommend that type must be at least 30mm. The absolute minimum height, however, is 12mm or 48pt. The height is determined by measuring a capital “X” in the typeface, from the letter’s baseline to its cap, or from bottom to top; while its proportion is determined by comparing the height of the capital “X” with its width. All type elements must have a clearance that is of the same height as the text size used, determined again by a capital “X”. An example explaining clearance can be found below. Braille is exempted from the recommended typographic clearance standards.



As per the Canadian Standards Association Accessible Design for the Built Environment, all words used with the typeface must be in camel case: every word must start with an uppercase letter and then followed by lowercase letters.

Language

The use of the specific words on the signage must also be considered. To make the washroom experience truly gender-inclusive, the word “Washroom” and “Change Room” has been selected for entrance signs. As the Government of Yukon is in a jurisdiction that serves a diverse cultural population, non-gendered words in other languages may be utilized using typeface standards and in collaboration with representatives from cultural user groups that use a non-English standard language. All words on signage must be centered on the signs.

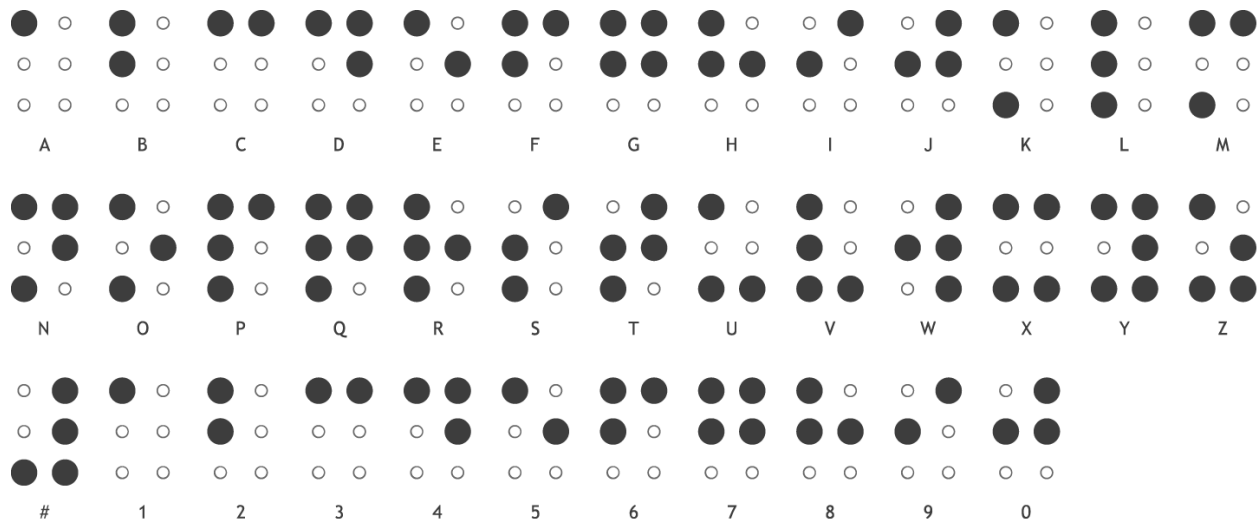
It is recommended that all signs be bilingual with French text in italics and appearing below the English text.

Single-function stall signs for urinals, accessibility and toilets must include the appropriate text below the pictogram.

Accessibility

It is recommended that all washroom signage include tactile elements (braille) that follow the Unified English Braille (UEB) standards. Signs of 10 words or fewer, use uncontracted braille for both English and French. To be consistent with the text, the English braille must be situated above the French braille. Wall-mounted “street signs” do not require braille.

The braille used in the signage examples throughout this report is for illustrative purposes only. Please reference the UEB chart below when creating signage.



Colour

As per the Canadian Standards Association Accessible Design for the Built Environment, the pictogram and text elements of the signage must contrast with their background by at least 70%. It is recommended that text and pictograms are placed in white on a Zinc coloured background (Zinc colour details include SPOT: Pantone 7477 C, CMYK: 86 / 29 / 21 / 67, RGB: 36 / 76 / 90, or HEX: #244C5A).

Materials

Signage must be made in a non-glossy or matte finish for optimal visibility.

Proportions and sizing

Signage must be at least 6x6" in size and must have a proportion that is or is in between 3:5 to 1:1. This means the height of the sign must be at least 60% of its width. All signs must also have rounded corners with at least a 5mm radius. Acceptable and recommended signage proportions include 6x6", 8x8", 8x6", 9x9", and 12x8". It is recommended that single-function stalls like urinals and toilets have smaller 6x6" signs with the appropriate pictogram, text, and braille element; entrances have 8x6" or 9x9" signs; and wall-mounted signs be around the 12x8" proportion.

Mounting heights

All washroom entrances must have washroom entrance signs that include the necessary pictograms, text, and braille elements, and must be mounted at least 1500mm ± 25mm from the floor, and 150mm ± 10mm from the door frame or maze entrance. It is acceptable to also install signage on entrance doors but must be installed centered and at least 1675mm from the floor. Wall-mounted signs may also be installed in conjunction with the washroom entrance signs and must be installed 1850-2100mm from the floor and 150-300mm from the vertical edge of the door frame or entrance.

Graphic examples of signage

The following are graphic examples for the types of entrance signage for gender-inclusive washrooms in Government of Yukon facilities.

**The signs below are graphic examples only. Do not copy for printing.*



The following are graphic examples for the types of single-function stalls.



Gender-inclusive washroom facility indication signage

One suggested method to further the standardization of gender-inclusive washrooms in the Government of Yukon is to include signage at the entrances of buildings to indicate that the facility has gender-inclusive washrooms. The suggested material for this type of signage is white vinyl attached to a glass surface on or around the building's entrance doors. The examples below show graphic options for these types of signs.

The side facing toilet is used in the examples below; however, Government of Yukon has selected the front facing toilet for the standard pictogram.



**This facility has
gender-inclusive,
accessible washrooms.**



**This facility has
gender-inclusive,
accessible
washrooms.**