



THE SILVER TRAIL

The Silver Trail winds through the traditional territory of the First Nation of Na-Cho Nyäk Dun. It offers an outstanding opportunity to experience Yukon's wilderness and mining history. Prospectors found gold on the banks of the Stewart River in 1885 and a 1902 gold strike on Duncan Creek brought in more miners. A rich vein of silver was discovered in 1903 but it took many years before the hard rock claims were developed. By 1915, there were winter roads leading up all the major mining creeks. All winter, horses hauled silver ore from the Keno Hill mines down to the Mayo sternwheeler landing. Bags of ore were transported from Mayo to Whitehorse by sternwheeler until 1950 when an allseason road was constructed.

The first 62 km (38.5 miles) of the Silver Trail are paved and a well-maintained gravel road passes through the old mining communities of Elsa and Keno City. Check on the Duncan Creek road conditions at Keno City or Mayo.



Insa Schultenkotter

18 Keno City - km 110

The Keno City Mining Museum is located in Jackson Hall, Keno's old community centre. Visit the Alpine Centre next door to learn about the natural history attractions of the region.



Insa Schultenkotter

17 Wind River Trail

The Wind River Trail leads to Hanson and McQuesten lakes and good hiking trails.



Insa Schultenkotter

16 Communication towers on Galena Hill

15 Elsa - km 97

The old Keno Hill Mines Ltd. company town of Elsa is closed to the public.

14 Galena Creek

A rich vein of silver was discovered at Galena Creek in 1903 and the old Silver King mine yielded tons of high grade silver ore.

13 South McQuesten Trail - km 87

An old mining road provides access to a number of lakes and back roads; all wheel vehicles are recommended.

12 Thermokarst Lakes

These thermokarst lakes were formed by melting permafrost. The forest has a feefering, drunken appearance due to the continued thawing around the shores.

11 Mount Haldane - km 76

You can hike up Mount Haldane on a fault line that runs west to Keno Hill. Nearby Haldane Lake is stocked with Rainbow Trout.



Insa Schultenkotter

19 Keno Hill

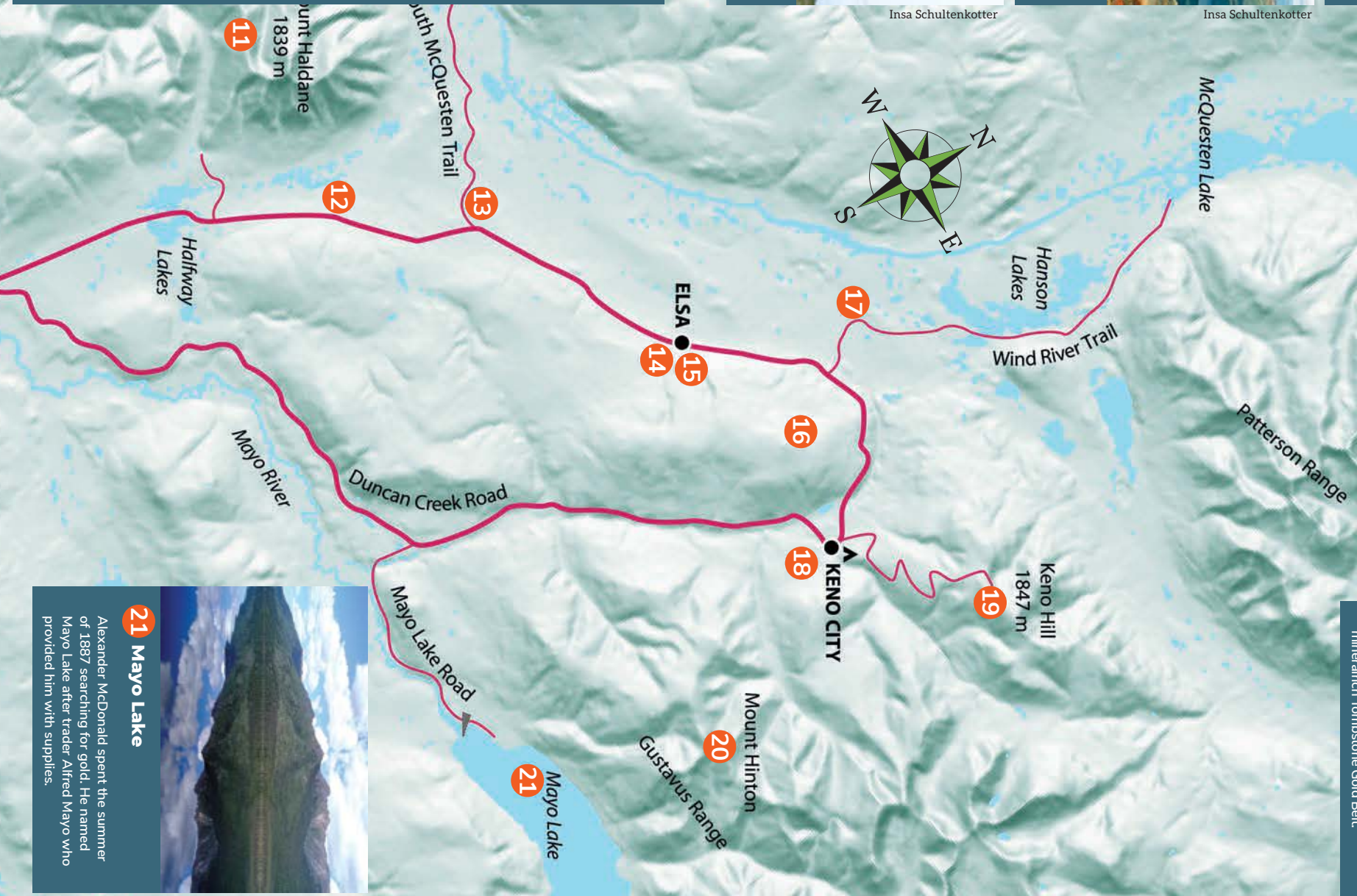
You can see the McQuesten Valley from the Ogilvie and Wernecke mountains from the Keno Hill signpost.



Insa Schultenkotter

20 Mount Hinton

Mount Hinton was named in 1904 for mining recorder Thomas Hinton. The mountain at the head of Duncan Creek is part of the mineral-rich Tombstone Gold Belt.



Insa Schultenkotter



21 Mayo Lake

Alexander McDonald spent the summer of 1887 searching for gold. He named Mayo Lake after trader Alfred Mayo who provided him with supplies.



Lyn Bleiler

6 Wareham Lake

A hydro dam created Wareham Lake, allowing for the growth of the United Keno Hill Mine operation. There is a hiking trail to the top of Mount Haldane, seen in the background.



Government of Yukon

5 Five Mile Lake - km 57

Five Mile Lake Campground and Day Use Area is a great place to swim and hike.



Government of Yukon

4 The Binet House - km 51

Visit the Binet House Interpretive Centre in Mayo to see exhibits about the geology and history of the area plus an interesting display of early medical equipment.



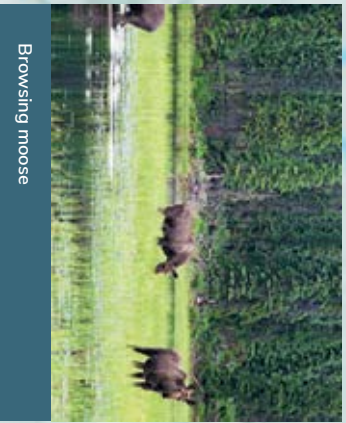
Insa Schultenkotter

3 Stewart River rest stop - km 19

A short interpreted trail leads up to a wildlife viewing lookout over the Devil's Elbow wetland.

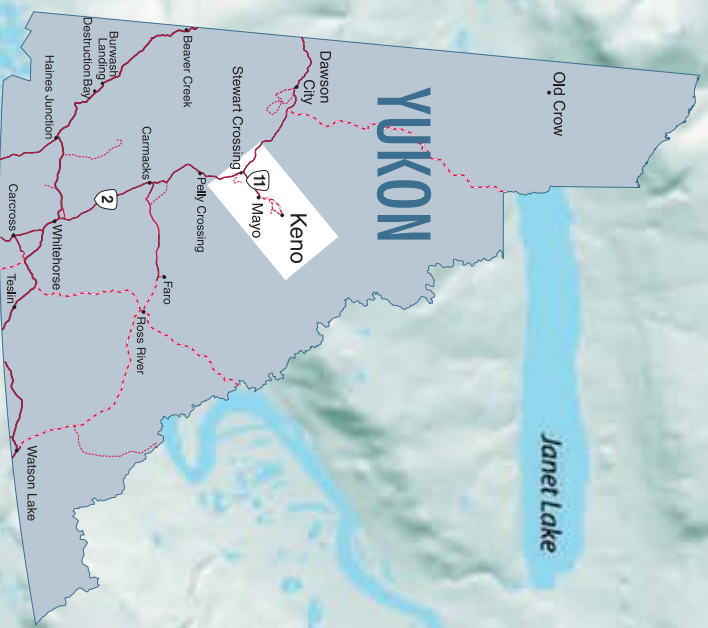
1 Stewart Crossing - km 0

Stewart Crossing is the gateway to the Silver Trail. This small community was serviced by the Stewart River sternwheelers and the Overland Trail winter stages until 1950 when the road was completed between Whitehorse and Mayo.



Browsing moose

Insa Schultenkotter



Insa Schultenkotter

Marmot on Keno Hill

10 Halfway Lakes - km 76

Halfway Lakes has good Northern Pike fishing. The ridge here is a moraine deposited by a glacier as it retreated north towards the McQuesten Valley.

9 Duncan Creek Road - km 68.2

The Duncan Creek Road was the original Silver Trail, the haul road for ore freighted from the Keno area mines to Mayo Landing.

8 Minto Lake Road - km 68

Minto Lake is reached by a narrow seasonal road. The fishing is good for Arctic Grayling, Lake Trout and Northern Pike. This was an early route to Dawson City.

7 Minto Bridge - km 64

This small settlement was flooded when the Wareham Lake power dam was constructed. Some of the old buildings are still being used on the nearby farm. A 2 km interpreted trail begins at the Minto Bridge rest stop.