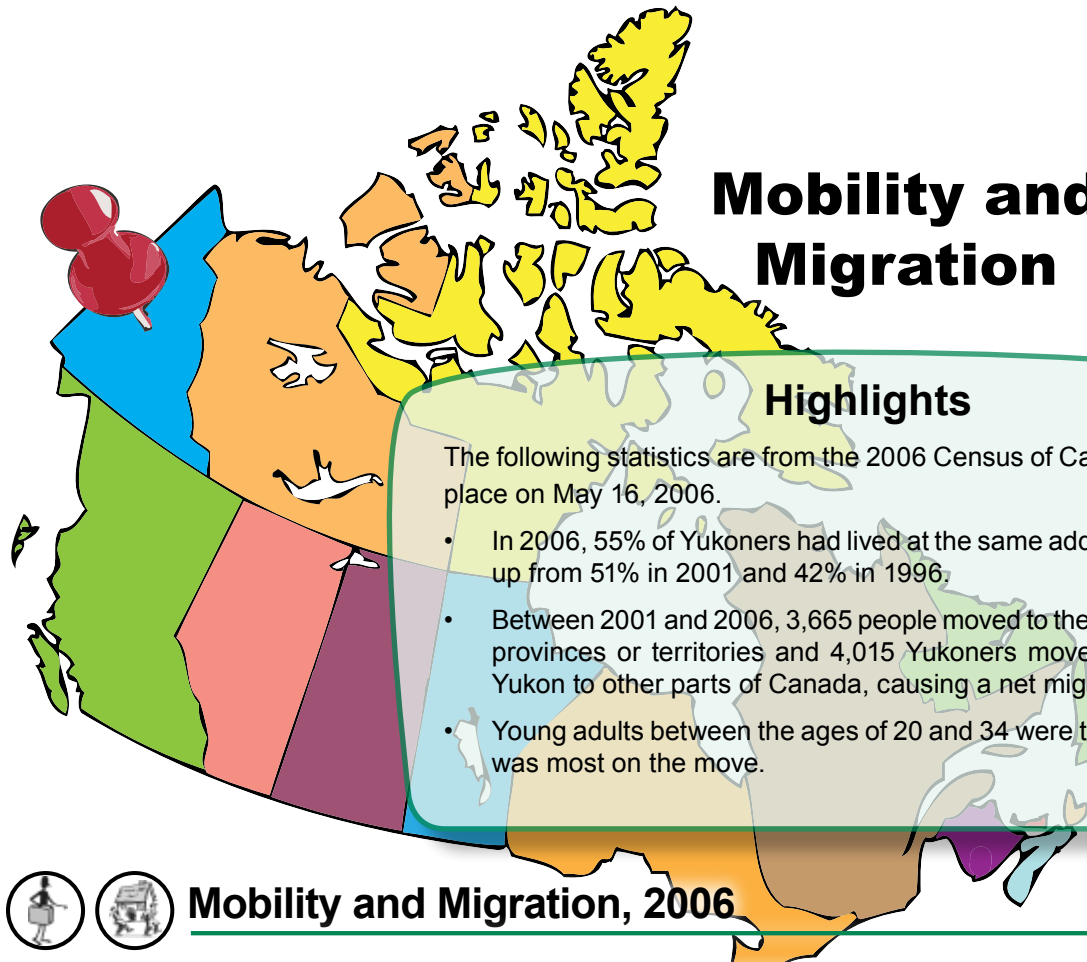




Mobility and Migration



Highlights

The following statistics are from the 2006 Census of Canada, which took place on May 16, 2006.

- In 2006, 55% of Yukoners had lived at the same address 5 years ago, up from 51% in 2001 and 42% in 1996.
- Between 2001 and 2006, 3,665 people moved to the Yukon from other provinces or territories and 4,015 Yukoners moved away from the Yukon to other parts of Canada, causing a net migration of -350.
- Young adults between the ages of 20 and 34 were the age group that was most on the move.



Mobility and Migration, 2006

	One Year Ago	Five Years Ago
Total population ¹	29,910	28,460
Lived at the same address	24,950	15,680
Lived within the Yukon, but changed addresses within the same census subdivision (municipality)	3,205	7,110
Lived within the Yukon, but changed addresses from another census subdivision (municipality)	615	1,535
Lived in a different province or territory	995	3,665
Lived in a different country	160	470

¹Total population refers to population 1 year and older for the 'place of residence 1 year ago' category, and population 5 years and older for the 'place of residence 5 years ago' category.

- In the 2006 Census, Yukoners who had not moved in the previous year accounted for 83% of the population aged 1 year and older; Yukoners who had not moved in the previous five years accounted for 55% of the population aged five years and older.
- While 3,665 Yukoners had lived in other provinces or territories before moving to the Yukon in the five years previous to the 2006 Census, 4,015 Yukoners moved to other provinces or territories from the Yukon in the same time period, causing a net interprovincial migration of -350 people between 2001 and 2006.



Yukon Mobility Status, 2006

Mobility Status...	...One Year Ago	...Five Years Ago
Non-movers	24,945	15,680
Movers	4,965	12,780
Non-migrants	3,200	7,105
Migrants	1,760	5,675
Internal Migrants	1,605	5,200
Intraprovincial Migrants	615	1,535
Interprovincial Migrants	990	3,665
External Migrants	160	470
Total Population	29,915 ¹	28,460 ²

¹Population aged 1 year and older

²Population aged 5 years and older
See page 4 for detailed definitions.

- In 2006, 55% of Yukon residents age 5 and above had the same address in both 2001 and 2006, compared with the national average of 60%.
- Of the 45% of Yukoners who moved between '01 and '06, 56% moved within the same census subdivision (municipality), while 44% were migrants, those who moved to a different census subdivision in the Yukon, or moved to the Yukon from another province, territory, or country.



Yukon Mobility/Migration Trends, 1996 – 2006 Censuses

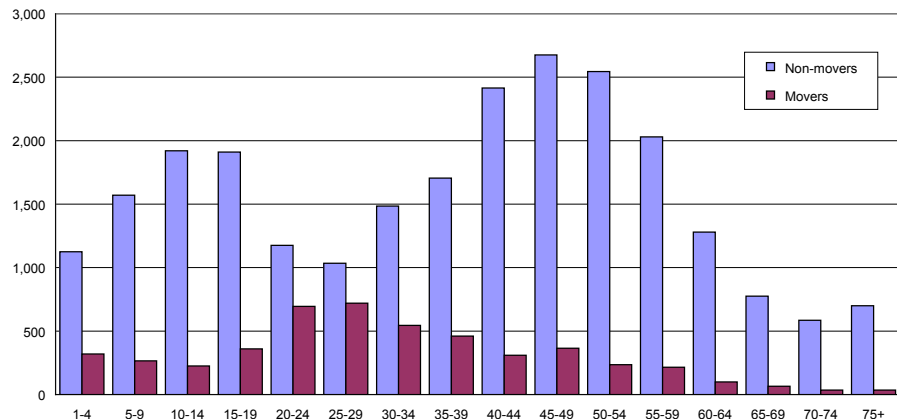
Based on previous five years...	1996	2001	2006
% who lived at same address 5 years ago	41.7	51.3	55.1
% who moved within the same census subdivision (municipality)	29.4	27.2	25.0
% who moved within the Yukon from a different census subdivision (municipality)	6.5	5.9	5.4
% who moved from a different province or territory	21.0	13.9	12.9
% who lived in a different country	1.3	1.6	1.7
Total Population ¹	28,310	26,795	28,460

¹Population aged 5 years and older



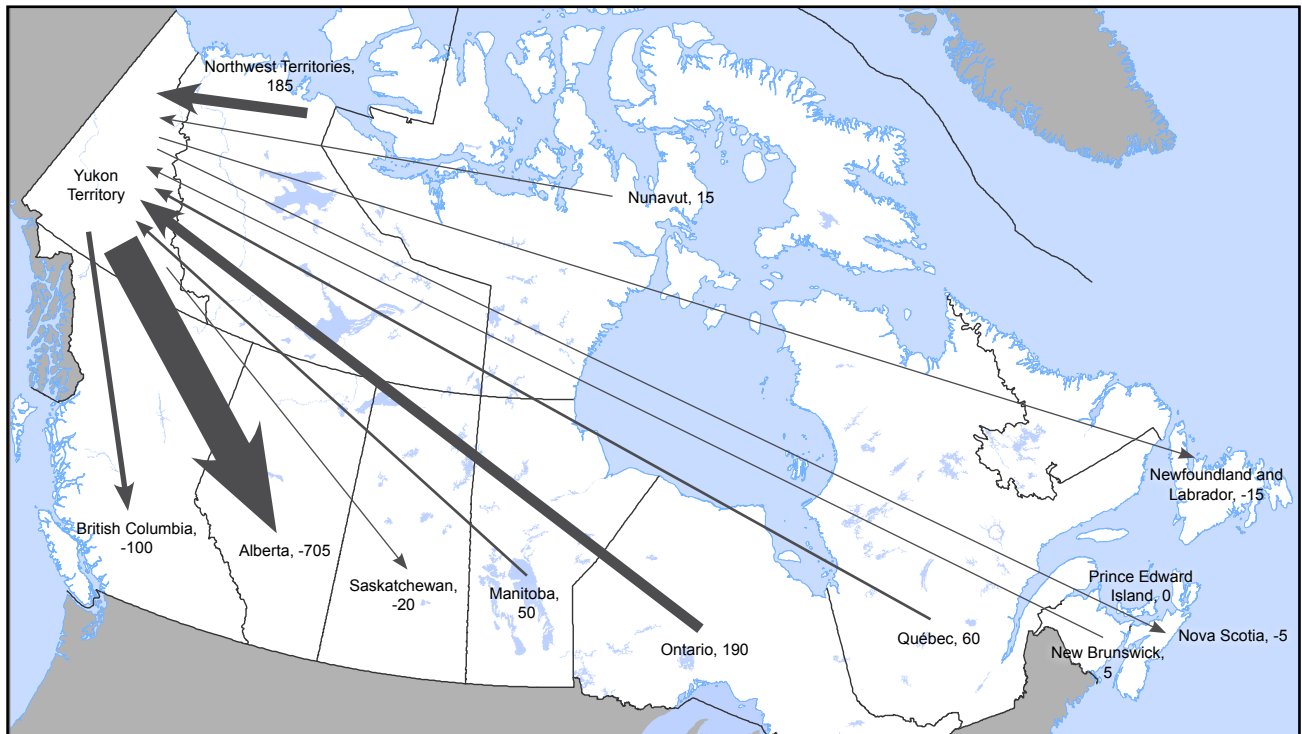
Yukon Movers and Non-Movers, 1 Year Ago, by Age

- Young adults between the ages of 20 and 34 were the group most on the move. During the year prior to the 2006 Census, 35% of the people in that age group had changed addresses.
- In contrast, 6% of those sixty-five and older had changed addresses in the previous year.





Yukon Interprovincial Net Migration, 2001 – 2006



- The Yukon had a net out-migration in the five year period between 2001 and 2006; there were 3,665 in-migrants (primarily from British Columbia and Alberta) and 4,015 out-migrants (primarily to British Columbia and Alberta), resulting in a net migration of -350.



Origin and Destination of Interprovincial Migrants, Yukon

Yukon Interprovincial Migrants	Previous Year			Previous Five Years		
	In From	Out To	Net	In From	Out To	Net
Newfoundland and Labrador	35	0	35	35	50	-15
Prince Edward Island	0	0	0	0	0	0
Nova Scotia	35	45	-10	120	125	-5
New Brunswick	10	0	10	40	35	5
Québec	35	60	-25	195	135	60
Ontario	165	100	65	545	355	190
Manitoba	30	60	-30	150	100	50
Saskatchewan	40	30	10	125	145	-20
Alberta	215	425	-210	750	1,455	-705
British Columbia	345	510	-165	1,380	1,480	-100
Northwest Territories	95	70	25	295	110	185
Nunavut	0	10	-10	35	20	15
Canada Total*	995	1,310	-315	3,665	4,015	-350

*Due to rounding, 'Canada Total' may not be a sum of the provincial/territorial numbers.



Definitions of Mobility and Migration

Mobility status refers to the relationship between a person's usual place of residence on Census Day and his or her usual place of residence one or five years earlier. A person is classified as a non-mover if no difference exists. Otherwise, a person is classified as a mover and this categorization is called Mobility status (1 or 5 years ago). Within the category of movers, a further distinction is made between non-migrants and migrants; this difference is called migration status.

Non-movers are persons who, on Census Day, were living at the same address as the one at which they resided one or five years earlier.

Movers are persons who, on Census Day, were living at a different address from the one at which they resided one or five years earlier.

Non-migrants are movers who, on Census Day, were living at a different address, but in the same census subdivision (CSD) as the one they lived in one or five years earlier.

Migrants are movers who, on Census Day, were residing in a different CSD one or five years earlier (internal migrants) or who were living outside Canada one or five years earlier (external migrants).

Intraprovincial migrants are movers who, on Census Day, were living in a different CSD from the one at which they resided one or five years earlier, in the same province.

Interprovincial migrants are movers who, on Census Day, were living in a different CSD from the one at which they resided one or five years earlier, in a different province.



Information Sheet #C06-06
March, 2008

Yukon
Executive Council Office
Bureau of Statistics

Additional information:
The Yukon Government
Executive Council Office
Bureau of Statistics (A-8C)
Box 2703, Whitehorse, Yukon Y1A 2C6
Telephone: (867) 667-5640; Fax: (867) 393-6203
email: ybsinfo@gov.yk.ca
website: www.eco.gov.yk.ca/stats/