



Highlights:

- The estimated population of Yukon on March 31, 2023 was 44,692; an increase of 944, or 2.2%, compared to the figure for March 31, 2022 (43,748).
- Comparing March 31, 2023 to March 31, 2013, Yukon's population increased by 8,285, or 22.8%. The population of the Whitehorse area increased by 7,290 or 25.9%; Dawson City increased by 357, or 17.9%; Watson Lake increased by 38, or 2.6%; and Haines Junction increased by 156, or 18.0%.

Notes on methodological changes:

Official population counts prior to June 2010 were based on information in Yukon Health Care Insurance Plan (YHCIP) files and a semi-annual health care update survey that estimated the number of plan members who were no longer Yukon residents. In 2010, the estimation model was revised and the population counts for June 2010 through December 2014 were derived by tracking changes in YHCIP files and other administrative data files. In 2015, the model was further revised to make the approach more comprehensive and to improve accuracy based on information in all available and applicable administrative data files of the Yukon government. In addition, the total population count of April 2011 was calibrated to a census-based estimate adjusted for net undercoverage.

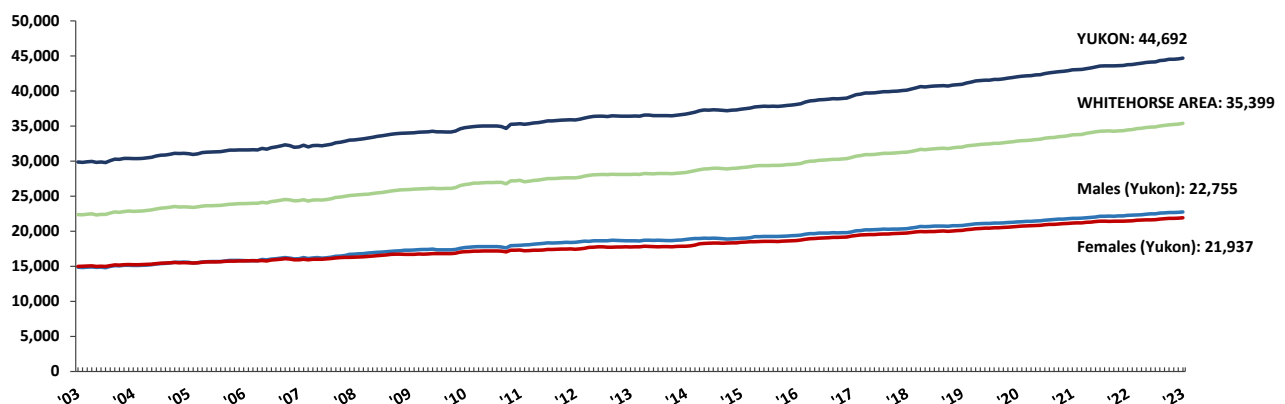
In 2020, the model was updated by prioritizing residential addresses over mailing addresses in the assignment of communities. This update allowed for separate reporting of population estimates for Johnson's Crossing and Mendenhall, and changes in the organization of Whitehorse subdivisions. The changes were applied to all population estimates from June 2019 onwards.

Changes in community and subdivision populations from one time period to another are not only due to natural population change and migrations, but may also be due to the reassignment of residential addresses as additional administrative data became available.

All monthly estimates are as of the last day of the month. The June estimates represent annual figures.

Given that the number of non-binary individuals in Yukon's administrative files is very small, non-binary individuals are distributed between males and females to protect confidentiality.

Monthly Population, March 31, 2003 to March 31, 2023



- From 2003 through 2014, Yukon's population increased almost steadily in most quarters of every year, except in 2013. Positive growth rates—often very high—have been recorded in each quarter, from 2015 onwards. The March 31, 2023 population at 44,692 was a new record high¹ for Yukon.
- On March 31, 2023, Yukon's population (44,692), increased by 157 people, or 0.4%, from the figure for December 31, 2022 (44,535), and increased by 944 people, or 2.2%, from March 31, 2022 (43,748).

¹ Accurate population counts during the Gold Rush are not available. However, the population figure in the first Census for Yukon (1901) was 27,219.

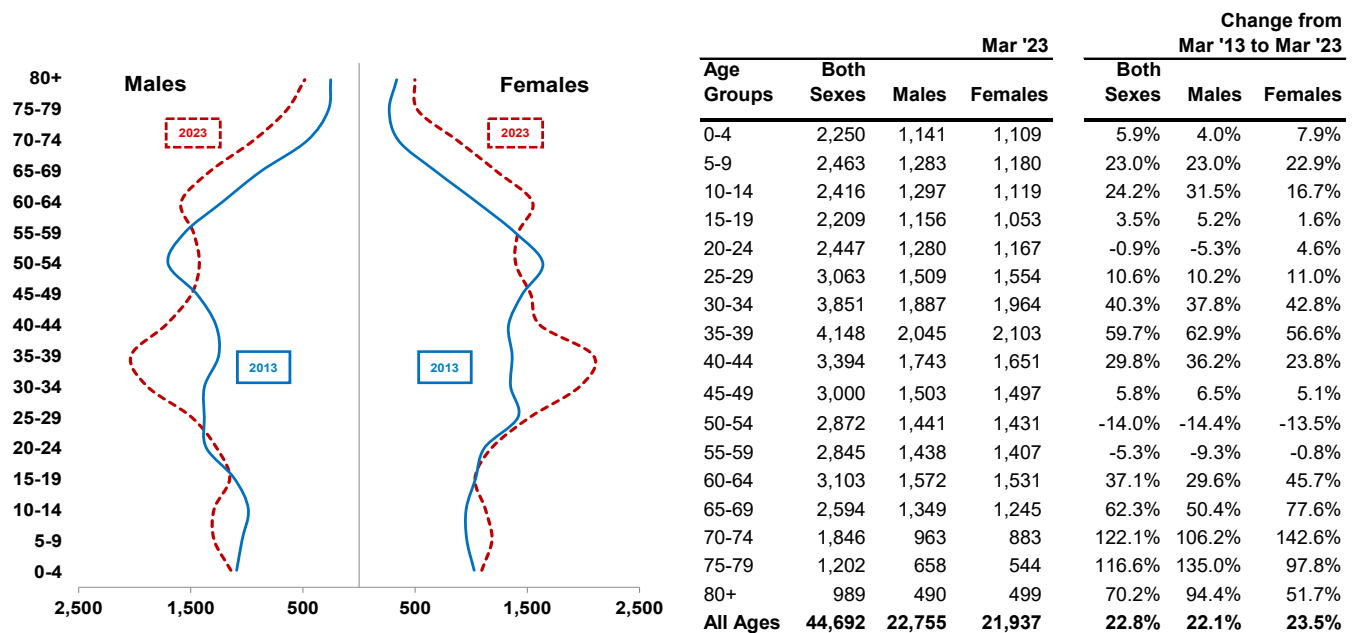
Monthly Population, Yukon, January 31, 2013 to March 31, 2023

	2013	2014	2015	2016	2017	2018	2019	2020	2021	2022	2023
Jan	36,420	36,552	37,269	37,943	38,958	40,006	40,844	41,839	42,818	43,623	44,537
Feb	36,432	36,622	37,309	38,004	39,012	40,077	40,907	41,924	42,901	43,641	44,593
Mar	36,407	36,707	37,422	38,088	39,231	40,119	40,962	42,032	43,031	43,748	44,692
Apr	36,438	36,851	37,490	38,207	39,472	40,289	41,154	42,118	43,053	43,789	
May	36,414	36,997	37,583	38,440	39,567	40,457	41,279	42,169	43,080	43,905	
Jun ¹	36,571	37,190	37,745	38,594	39,737	40,643	41,441	42,209	43,190	43,964	
Jul	36,570	37,294	37,800	38,643	39,740	40,594	41,504	42,307	43,290	44,087	
Aug	36,512	37,293	37,834	38,761	39,761	40,670	41,567	42,347	43,432	44,133	
Sep	36,505	37,340	37,820	38,797	39,847	40,710	41,555	42,497	43,567	44,160	
Oct	36,492	37,311	37,832	38,843	39,928	40,746	41,665	42,605	43,611	44,339	
Nov	36,488	37,252	37,817	38,926	39,922	40,788	41,670	42,688	43,592	44,414	
Dec	36,473	37,210	37,868	38,900	39,968	40,717	41,743	42,774	43,588	44,535	

¹ June figures are referred to as 'annual'

- During the first quarter of 2023, Yukon's population increased by 157 people, or 0.4%, from 44,535 on December 31, 2022 to 44,692 on March 31, 2023.
- Comparing the months of January through March of 2023 to their respective months of 2022, population increased: 2.1% in January; 2.2% in February; and 2.2% in March.

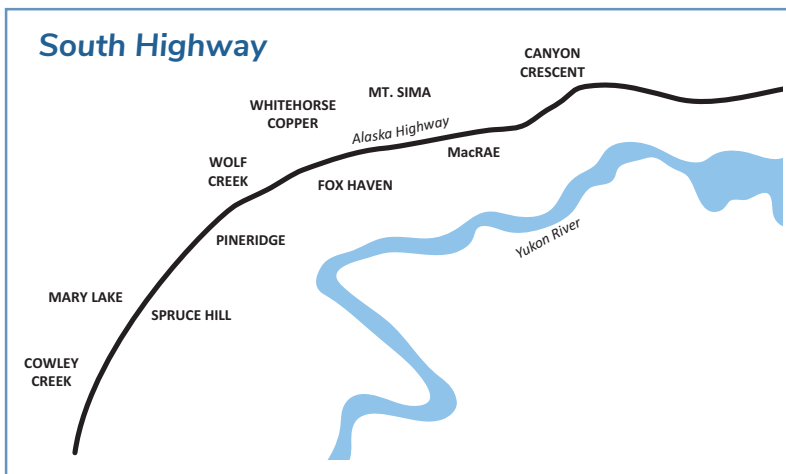
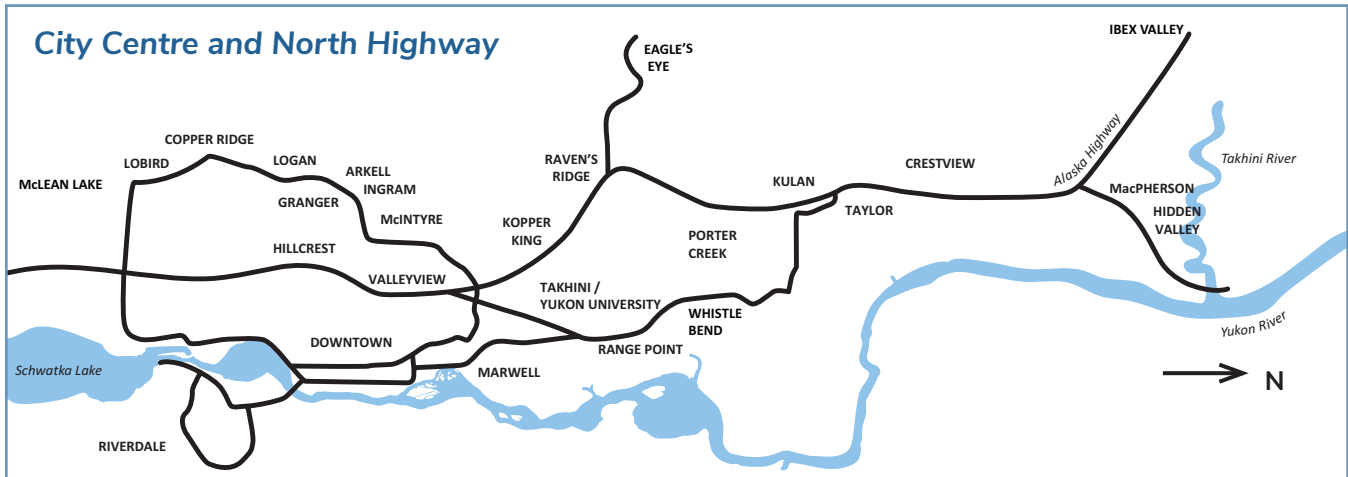
Population by Age Group and Sex, Yukon, March 31, 2013 and March 31, 2023



Comparing March 31, 2023 to March 31, 2013, growth occurred as follows (15-year age groupings):

- 0 to 14 years = increased 1,056 people, (17.4%);
- 15 to 29 years = increased 347 people, (4.7%);
- 30 to 44 years = increased 3,437 people, (43.2%);
- 45 to 59 years = decreased 460 people, (-5.0%);
- 60 to 74 years = increased 2,850 people, (60.7%); and
- 75 years and over = increased 1,055 people, (92.9%).

Population by Subdivision in Whitehorse Area



Note:

Subdivisions are assigned based on boundaries provided by the City of Whitehorse. Areas outside of the City of Whitehorse boundaries are assigned using Statistics Canada's Census Subdivision (CSD) boundaries within the Census Agglomeration of Whitehorse.

Changes in subdivision (City and CSD subdivision) populations from one time period to another are not only due to natural population change and migrations, but may also be due to the reassignment of residential addresses as additional administrative data become available.

Subdivision	Mar '22	Dec '22	Mar '23	Subdivision	Mar '22	Dec '22	Mar '23
Arkell/Ingram	1,113	1,151	1,155	Range Point	1,217	1,257	1,271
Copper Ridge	3,326	3,363	3,339	Raven's Ridge/Eagle's Eye	156	163	165
Cowley Creek	254	253	246	Riverdale	5,308	5,346	5,335
Crestview	1,041	1,051	1,061	Takhini/Yukon University	1,470	1,504	1,513
Downtown	3,071	3,103	3,130	Valleyview	157	169	165
Granger	1,326	1,280	1,301	Whistle Bend	2,502	2,989	3,132
Hidden Valley/MacPherson	439	453	459	Wolf Creek	439	427	421
Hillcrest	723	700	697	Not in Defined Neighbourhood Within City Limits	141	139	139
Kopper King	205	203	207	Whitehorse-Municipal Boundaries	30,609	31,271	31,439
Lobird	219	233	220	Ibx Valley ¹	518	534	546
Logan	617	626	625	Marsh Lake ²	720	724	733
MacRae/Whse Copper/McLean Lake/Mt. Sima/Canyon Cres.	656	653	654	Mount Lorne ³	457	475	473
Marwell	140	131	130	Outside City Limits-North ⁴	1,544	1,571	1,588
Mary Lake/Spruce Hill	472	469	474	Outside City Limits-South ⁵	593	602	601
McIntyre	505	493	496	Not applicable ⁶	20	19	19
Pineridge/Fox Haven	383	370	373	Whitehorse Area Total	34,461	35,196	35,399
Porter Creek/Kulan/Taylor	4,729	4,745	4,731				

¹ Previously included in Outside City Limits-West. Includes KM 1441 to KM 1485 Alaska Highway.

² Includes Alaska Highway KM 1355 to KM 1393 (Lewes River Bridge).

³ Previously included in Outside City Limits-South. Includes KM 137 to KM 154 South Klondike Highway, including Annie Lake Road.

⁴ Outside City Limits-North includes Takhini River Bridge north to KM 247 North Klondike Highway, including Takhini Hotsprings Road.

⁵ Outside City Limits-South includes Golden Horn, Carcross Cut-off, south to Lewes River Bridge, as well as KM 114 to KM 137 South Klondike Highway.

⁶ 'Not applicable' includes Kusawa Lake Road, and past KM 247 North Klondike Highway to Braeburn.

Population by Community¹ and Age Group, March 31, 2023

	Age Group																All Ages	
	0-4	5-9	10-14	15-19	20-24	25-29	30-34	35-39	40-44	45-49	50-54	55-59	60-64	65-69	70-74	75-79		80+
Beaver Creek	2	1	4	2	3	14	16	5	10	6	5	8	11	5	6	1	4	103
Burwash Landing	5	6	4	3	3	3	13	6	8	10	6	9	8	14	2	2	3	105
Carcross	22	22	24	23	26	26	29	34	24	32	38	38	34	39	27	19	13	470
Carmacks	31	39	42	30	37	35	33	36	36	39	33	35	55	44	30	13	8	576
Dawson City	103	107	94	101	106	123	238	257	197	159	154	172	189	160	90	55	41	2,346
Destruction Bay	0	3	2	3	3	2	6	3	3	7	7	6	6	4	4	0	3	62
Faro	21	26	28	23	17	20	19	36	34	22	16	33	59	49	30	22	12	467
Haines Junction	65	43	55	55	37	54	60	76	69	79	72	68	87	83	58	36	25	1,022
Johnson's Crossing	1	0	5	4	0	3	1	0	4	3	5	4	5	5	6	1	8	55
Mayo	14	23	20	13	23	27	38	35	37	27	26	35	44	45	26	14	12	459
Mendenhall	6	5	6	10	4	13	5	5	19	20	11	7	15	7	12	7	0	152
Old Crow	15	14	15	13	11	20	18	29	19	15	12	14	16	12	16	7	4	250
Pelly Crossing	15	21	31	17	20	22	35	36	23	24	26	33	28	21	5	11	4	372
Ross River	20	21	18	25	29	24	28	25	27	24	46	36	28	20	18	8	5	402
Tagish	7	11	6	11	11	16	10	16	18	20	27	37	56	49	34	29	20	378
Teslin	18	25	24	25	19	30	36	33	24	41	38	41	37	37	29	21	13	491
Watson Lake	60	76	92	74	79	89	107	115	78	79	122	138	116	94	60	62	53	1,494
Whitehorse Area ²	1,845	2,020	1,945	1,777	2,019	2,541	3,157	3,396	2,758	2,389	2,224	2,116	2,295	1,890	1,382	890	755	35,399
Other ³	0	0	1	0	0	1	2	5	6	4	4	15	14	16	11	4	6	89
Yukon	2,250	2,463	2,416	2,209	2,447	3,063	3,851	4,148	3,394	3,000	2,872	2,845	3,103	2,594	1,846	1,202	989	44,692

¹ Community-level estimates include populations within the municipalities and surrounding area up to halfway to the next municipal boundary along the relevant highway or road, with the exceptions of: Braeburn, Champagne, Swift River and City of Whitehorse.

² Whitehorse Area includes City of Whitehorse and surrounding areas as defined on page 3.

³ Other includes Braeburn, Champagne, Swift River, Keno and Stewart Crossing.

Note: The following tables are sourced from Statistics Canada (SC). SC derives their estimates using a model and revises them after twelve months. The SC estimates are finalized during postcensal revisions every five years. SC estimates will not align with YBS estimates in the preceding tables which are based on administrative data.

International Migration To and From Yukon, January 1 2023 to March 31, 2023^(P)

	Immigrants	Emigrants	Returning Emigrants	Net Temporary Emigrants	Net Non-permanent Residents	Net International Migration
Jan 1, 2023 to Mar 31, 2023	343	7	3	7	-87	245

Source: Statistics Canada. Table 17-10-0040-01 (accessed: 2023-07-21)

Origin and Destination of Interprovincial Migrants, January 1, 2023 to March 31, 2023^(P)

Origin	Destination												
	NFLD	PEI	NS	NB	QC	ON	MB	SK	AB	BC	YT	NWT	NU
NFLD	..	36	128	339	115	724	65	73	809	127	15	46	15
PEI	30	..	145	94	35	485	0	5	234	61	0	0	0
NS	245	286	..	676	145	1,316	93	68	896	398	8	68	66
NB	91	198	662	..	432	1,069	83	110	647	264	0	0	12
QC	55	79	360	603	..	3,675	105	59	914	727	6	6	81
ON	1,122	973	3,843	2,823	4,056	..	1,661	1,075	11,564	5,299	155	266	231
MB	49	26	135	88	258	1,706	..	476	1,945	1,585	5	0	34
SK	15	33	121	112	108	1,314	402	..	3,251	1,501	37	31	10
AB	510	108	633	415	558	3,871	683	1,630	..	6,506	70	199	62
BC	111	125	805	323	622	3,708	469	980	10,006	..	57	148	5
YT	16	0	21	5	6	79	5	32	254	63	..	34	20
NWT	38	0	43	20	30	128	13	13	462	93	59	..	22
NU	20	15	59	50	48	261	41	28	49	23	32	74	..
	NFLD	PEI	NS	NB	QC	ON	MB	SK	AB	BC	YT	NWT	NU
In	2,302	1,879	6,955	5,548	6,413	18,336	3,620	4,549	31,031	16,647	444	872	558
Out	2,492	1,089	4,265	3,568	6,670	33,068	6,307	6,935	15,245	17,359	535	921	700
Net	-190	790	2,690	1,980	-257	-14,732	-2,687	-2,386	15,786	-712	-91	-49	-142

Source: Statistics Canada. Table 17-10-0045-01 (accessed: 2023-07-21)

July 2023
Next Release: October 2023

