



Yukon Fuel Price Survey April 2024

Retail Motor Fuel Prices, by Community

| | Regular gasoline | | | Premium gasoline | | | Diesel | | | Propane | | |
|------------------|------------------|--------------------|--------------------|------------------|--------------------|--------------------|------------------|--------------------|--------------------|------------------|--------------------|--------------------|
| | --- % change --- | | | --- % change --- | | | --- % change --- | | | --- % change --- | | |
| | Price | Mar '24 to Apr '24 | Apr '23 to Apr '24 | Price | Mar '24 to Apr '24 | Apr '23 to Apr '24 | Price | Mar '24 to Apr '24 | Apr '23 to Apr '24 | Price | Mar '24 to Apr '24 | Apr '23 to Apr '24 |
| Whitehorse | 188.1 | 7.3% | 2.4% | 206.5 | 6.9% | 2.8% | 194.2 | 2.6% | -4.5% | 141.5 | -0.4% | 2.3% |
| Beaver Creek | 214.9 | 4.9% | 7.5% | 229.9 | 4.5% | 1.3% | 249.9 | 4.2% | 10.1% | ... | ... | ... |
| Burwash Landing | 189.9 | 8.6% | -1.1% | 205.9 | 10.2% | 3.5% | 195.9 | 3.2% | -6.3% | ... | ... | ... |
| Carcross | 194.9 | 5.4% | 1.6% | ... | ... | ... | 202.9 | 1.5% | -5.6% | ... | ... | ... |
| Carmacks | 192.3 | 6.9% | 0.2% | 220.3 | 10.2% | 1.6% | 221.9 | 6.7% | 5.7% | ... | ... | ... |
| Dawson City | 198.7 | 3.1% | -2.2% | 218.7 | -0.9% | 0.0% | 210.2 | 0.3% | -4.8% | 149.0 | 0.0% | ... |
| Destruction Bay | 187.4 | 4.2% | 3.0% | 207.4 | 4.5% | 2.7% | 198.4 | 3.4% | -1.7% | 193.9 | 3.7% | 3.7% |
| Eagle Plains | 236.0 | 0.0% | 9.8% | ... | ... | ... | 240.0 | 0.0% | 0.0% | 180.0 | 0.0% | 0.0% |
| Faro | 194.9 | 5.4% | 1.6% | ... | ... | ... | 204.9 | 0.0% | -3.3% | ... | ... | ... |
| Haines Junction | 188.7 | 3.4% | 5.1% | 210.5 | 3.7% | 7.4% | 211.2 | 0.4% | -5.3% | ... | ... | ... |
| Jake's Corner | 189.9 | 14.5% | 3.3% | 208.9 | 10.0% | 3.5% | 194.9 | 2.6% | -4.4% | ... | ... | ... |
| Mayo | 186.9 | 3.0% | -3.1% | ... | ... | ... | 196.9 | 0.3% | -7.5% | ... | ... | ... |
| Pelly Crossing | 193.9 | 4.3% | 1.6% | 206.4 | 0.2% | -4.4% | 216.4 | 5.1% | -12.0% | ... | ... | ... |
| Ross River | .. | ... | ... | ... | ... | ... | .. | ... | ... | ... | ... | ... |
| Stewart Crossing | 199.9 | 11.1% | 3.1% | 218.9 | 10.1% | 3.3% | 204.9 | 2.5% | -4.2% | ... | ... | ... |
| Teslin | 186.5 | 6.2% | 0.8% | 204.0 | 3.6% | 1.3% | 194.5 | 1.5% | -5.6% | 150.0 | 0.0% | 20.0% |
| Watson Lake | 175.6 | 4.4% | 1.6% | 213.9 | 4.4% | 7.3% | 190.9 | 1.4% | -5.1% | 160.0 | 0.0% | 0.0% |

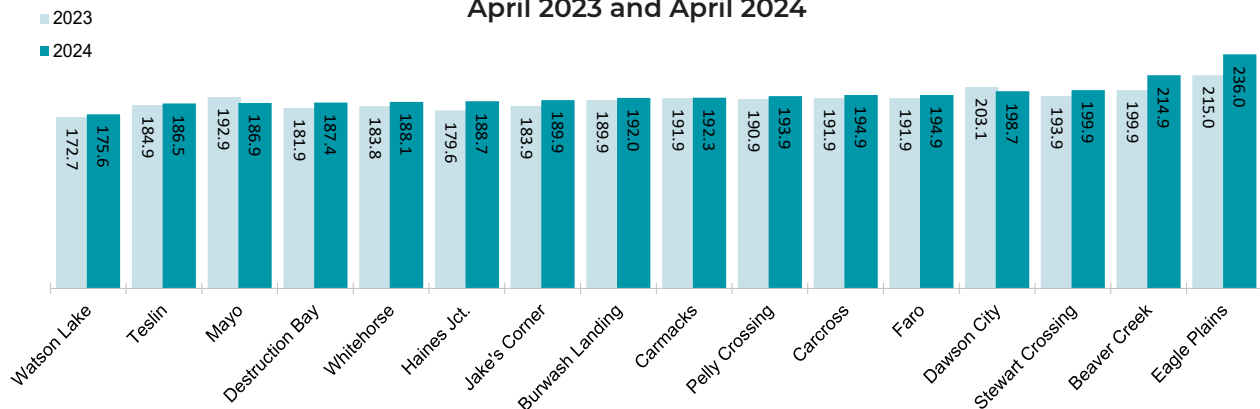
Notes to readers:

- All prices are Canadian cents per litre, including all applicable taxes.
- Communities with multiple gas stations have an average price for the reporting period
- .. indicates this information was not available for the reporting period.
- ... indicates not applicable, or this service was not available in this community at this time.

In April 2024, average **regular self-serve** gasoline prices ranged from 175.6¢ per litre in Watson Lake to 236.0¢ per litre in Eagle Plains; a difference of 60.4¢. Comparing April 2024 to April 2023:

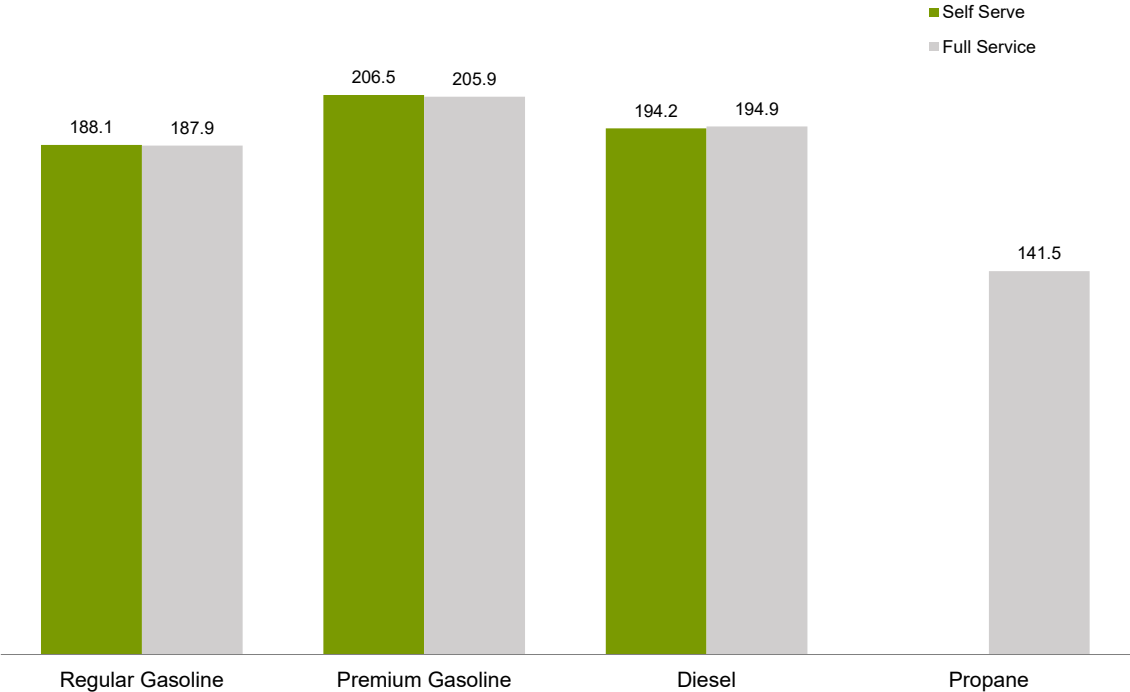
- **Regular self-serve** gasoline prices increased in all Yukon communities except Burwash Landing, Dawson City and Mayo — the largest percentage increase was in Eagle Plains (9.8%).
- **Diesel self-serve** prices decreased in all Yukon communities except Beaver Creek and Carmacks — the largest percentage decrease was in Pelly Crossing (12.0%), prices remained the same in Eagle Plains.
- In communities offering **full-serve propane** fuel services, where data were available, prices increased in Destruction Bay, Whitehorse and Teslin; and remained the same in Eagle Plains and Watson Lake.

Average Self-Serve Regular Gasoline Prices, cents per litre, April 2023 and April 2024

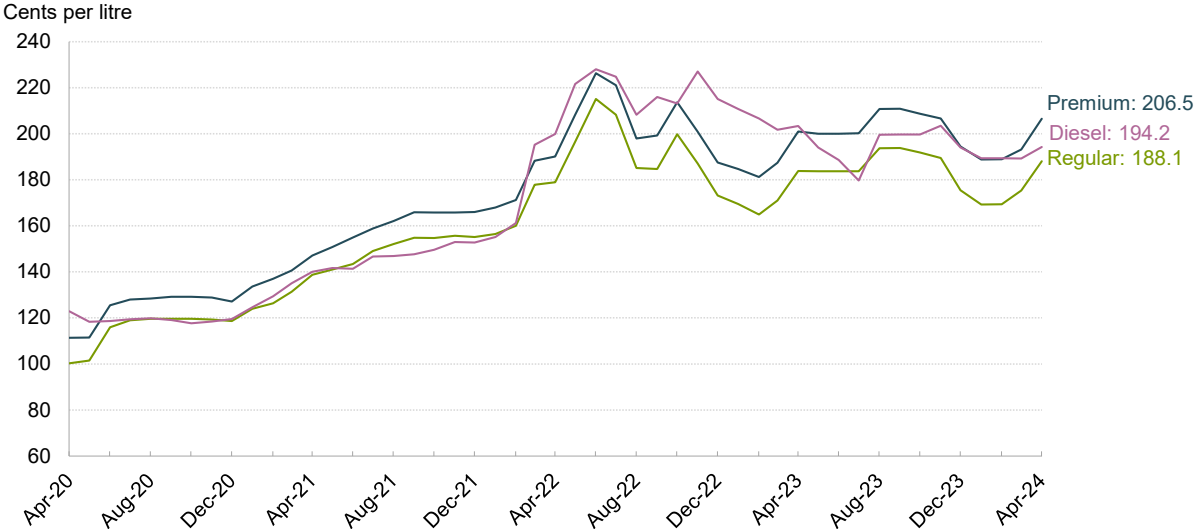


Retail Motor Fuel Prices — Whitehorse

Average Fuel Prices, April 2024
(cents per litre)



Average Self-Serve Bi-weekly Motor Fuel Prices, Whitehorse
April 2020 - April 2024



Residential Fuel Prices, by Community

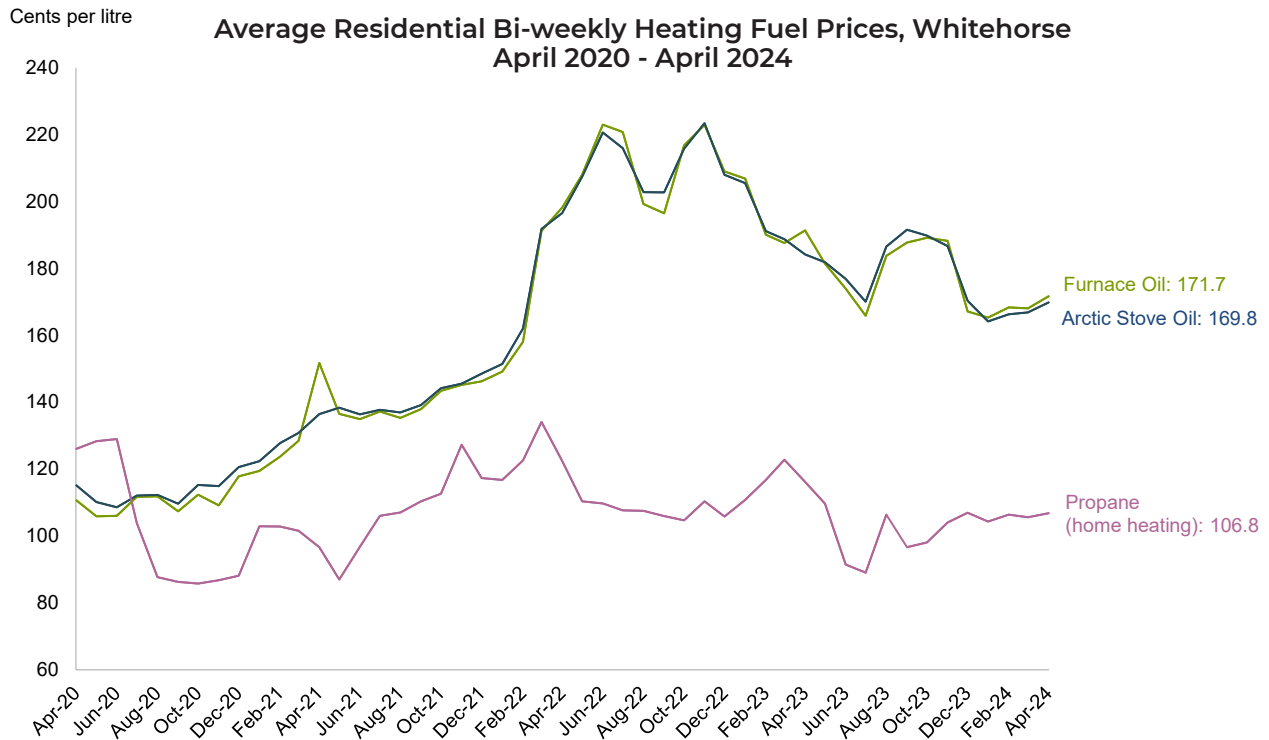
| | Furnace Oil | | | Arctic Stove Oil | | | Propane (home heating) | | |
|------------------|------------------|--------------------|--------------------|------------------|--------------------|--------------------|------------------------|--------------------|--------------------|
| | --- % change --- | | | --- % change --- | | | --- % change --- | | |
| | Price | Mar '24 to Apr '24 | Apr '23 to Apr '24 | Price | Mar '24 to Apr '24 | Apr '23 to Apr '24 | Price | Mar '24 to Apr '24 | Apr '23 to Apr '24 |
| Whitehorse | 171.7 | 2.2% | -10.3% | 169.8 | 1.8% | -7.8% | 106.8 | 1.1% | ... |
| Beaver Creek | 179.7 | 4.9% | -11.5% | 182.8 | 4.8% | -7.5% | 100.1 | -9.7% | ... |
| Burwash Landing | 177.6 | 4.9% | -11.1% | 175.7 | 3.0% | -14.9% | 100.1 | -9.7% | ... |
| Carcross | 175.7 | 5.0% | -11.7% | 172.3 | 3.1% | -11.7% | 94.9 | -10.2% | ... |
| Carmacks | 176.5 | 5.0% | -11.6% | 174.6 | 3.5% | -11.4% | 94.9 | -14.4% | ... |
| Dawson City | 175.4 | 2.1% | -15.4% | 177.0 | 2.0% | -13.9% | 100.1 | -9.7% | ... |
| Destruction Bay | 177.6 | 5.0% | -16.8% | 180.7 | 4.9% | -8.8% | ... | ... | ... |
| Faro | 178.6 | 4.9% | -7.2% | 174.8 | 0.9% | -10.6% | 100.1 | -9.7% | ... |
| Haines Junction | 176.5 | 5.0% | -13.7% | 175.8 | 4.3% | -10.8% | 94.9 | -10.2% | ... |
| Marsh Lake | 175.7 | 5.0% | -11.7% | 172.3 | 3.1% | -7.2% | ... | ... | ... |
| Mayo | 173.6 | 2.1% | -14.2% | 175.2 | 2.1% | -13.5% | 100.1 | -9.7% | ... |
| Pelly Crossing | 177.8 | 5.2% | -11.6% | 176.3 | 3.2% | -11.1% | 100.1 | -9.7% | ... |
| Ross River | 179.2 | 8.3% | -6.7% | 182.3 | 4.8% | -10.0% | 100.1 | -9.7% | ... |
| Stewart Crossing | 178.1 | 4.9% | -11.5% | 181.3 | 4.9% | -8.4% | 100.1 | -9.7% | ... |
| Tagish | 175.7 | 5.0% | -12.9% | 172.3 | 3.1% | -11.7% | 94.9 | -10.2% | ... |
| Teslin | 176.5 | 5.0% | -11.8% | 174.6 | 3.5% | -11.4% | 94.9 | -10.2% | ... |
| Watson Lake | 179.7 | 4.9% | -11.5% | 182.8 | 4.8% | -9.9% | 91.6 | -10.5% | ... |

Notes to readers:

- All prices are Canadian cents per litre, including all applicable taxes.
- ... indicates this information was not available for the reporting period.
- ... indicates not applicable, or this service was not available in this community at this time.

Comparing April 2024 to April 2023:

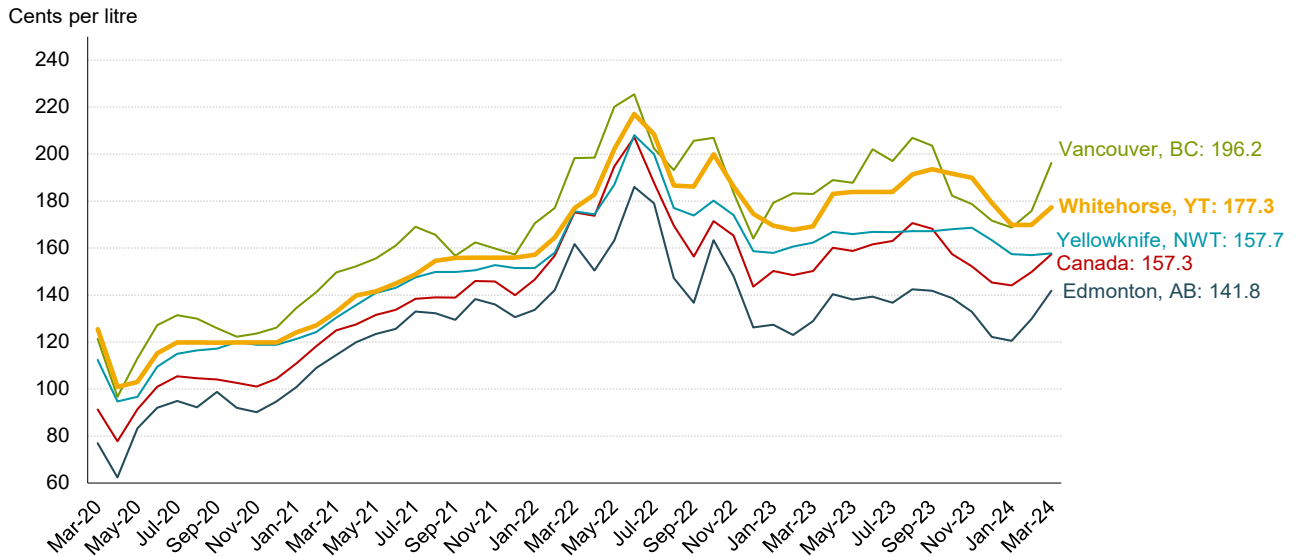
- **Furnace oil** prices decreased in all Yukon communities — the largest percentage decrease was in Destruction Bay (16.8%);
- **Arctic stove** oil prices decreased in all Yukon communities — the largest percentage decrease was in Burwash Landing (14.9%); and
- **Propane** (home heating) prices were not available in April 2023.



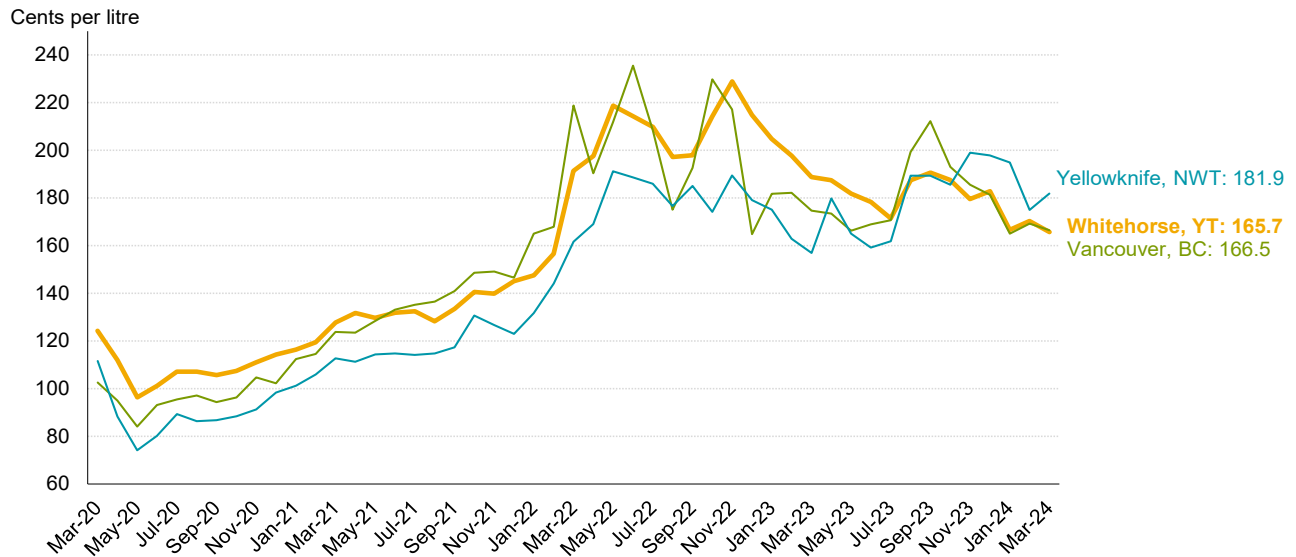
Monthly Average Retail Prices for Gasoline and Fuel Oil - by geography

The data in the following charts are sourced from Statistics Canada's data tables (Table: 18-10-0001-01).

Monthly Average Gasoline Prices, March 2020 to March 2024



Monthly Average Heating Fuel Oil Prices, March 2020 to March 2024



Source: Statistics Canada. Table 18-10-0001-01 (accessed: 2024-01-25).

Looking for detailed data?

Detailed and downloadable fuel price data is available by Yukon community on the Community Statistics website.

[View detailed fuel data](#)

Next release: June 3, 2024