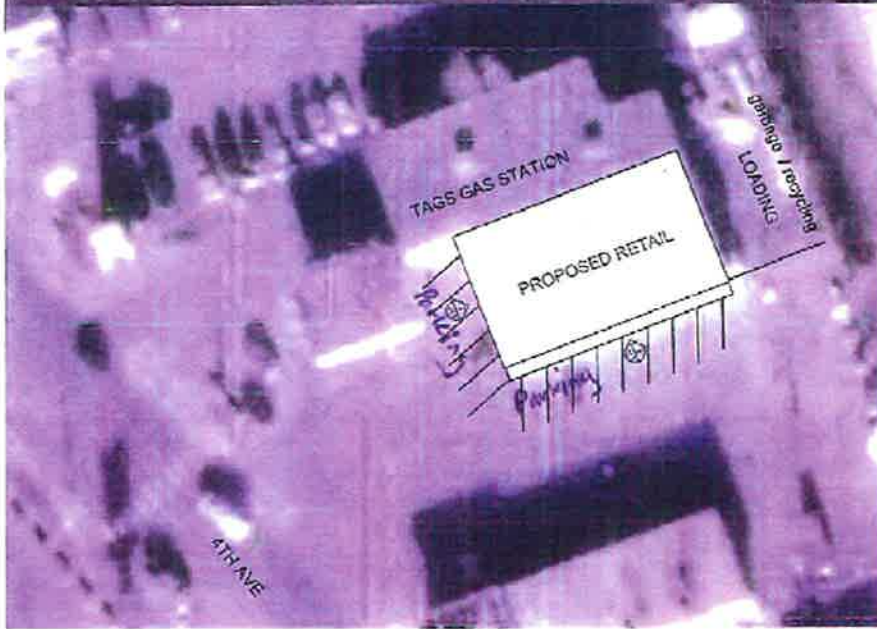


190



Imagery ©2019 DigitalGlobe, Map data ©2019 Google 20 m





REFER TO LEGAL SURVEY:
 LOT A-21, PLAN 7820, Albany Subdivision, Westerlo, VT
 approx 3,824 SF, ground level

COMMENTS - CONCEPT COMMERCIAL
 The projects should be a mix of food, automotive services and convenience stores, including those that are multiple stories.

- VI.022, Federal class, no additional ground
- VI.023, Overpass/underpass
- No change to existing zoning or MIA, amend to allow
- VI.033 Other Regulations
 Minimum parking shall be provided as city with provision for landscaping and screening
- 7.14, In-Character Parking and Loading
 Retail Store Maximum 1000 sq foot lot size
- 2 parking spaces within gross area
- 2 Class A 20 parking stall, parking
- 0.75 A 200 sq ft 20 sq ft parking stalls required if 10 stalls

BASED ON 2008 INFORMATION

Reg. Category	Comp. F	Standard Category
Building Area	no more than 10,000 sq ft	
Building Height	3 Story	
Construction	Construction Requirements	

Access/Construction & Egress
 2 Egress doors 7' or 6" doors
 Minimum Building Area: Egress of Parking 1 door, 1 door
 Construction materials to be reviewed

Plan Assembly: All sets shall be submitted separately with appropriate annotations.
Load-bearing Structures: All sets or supporting assembly, where it may be identified as such.

Details of Project/Construction
 Data to Item (see Construction) Item 1 in Class 2 work
 All other items Per Construction - 49 and 700

Summary List
 Table 2.1.1.2

Item	Area	Volume	Area	Volume
F01	0.00	0.00	0.00	0.00
F02	0.00	0.00	0.00	0.00
F03	0.00	0.00	0.00	0.00
F04	0.00	0.00	0.00	0.00

Roof/Climate/Load - Winter
 For more information see roof or ceiling, if present

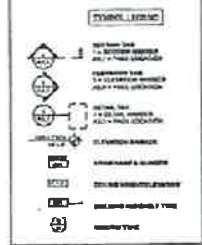
Fire Alarm System
 A Fire Alarm System shall be required, as indicated

Construction Materials
 Materials are acceptable and are permitted, and selected as indicated with indicated regulations.

Details of Construction/Design
 Screening/lighting details provided, unless otherwise indicated, unless otherwise noted, unless otherwise noted, unless otherwise noted, unless otherwise noted, unless otherwise noted.

Other
 I agree that the information provided is true and correct and that I have provided all the information necessary for the design and construction of the project.

Notes
 The information provided is for informational purposes only and does not constitute a contract or a binding agreement.



SYMBOL KEY

Symbol Number	Symbol Name
SYMBOL 1	SILVER PINE
SYMBOL 2	BROWN PINE
SYMBOL 3	YELLOW PINE
SYMBOL 4	RED PINE
SYMBOL 5	DOUGLASS PINE
SYMBOL 6	SPRUCE
SYMBOL 7	ASPEN
SYMBOL 8	WATER

NO.	DESCRIPTION	DATE

HOBO RETAIL

L. J. HARRIS ARCHITECTS LTD.
 4421 - 81st Ave. W. Edina, MN 55425
 PH: 763-845-8000
 FAX: 763-845-8001
 WWW: L.J.HARRISARCHITECTS.COM

NORTHERN STUDIO
 ARCHITECTURE • INTERIORS • DESIGN
 100712 ALBANY ROAD, WESTERLO, VT 05291
 TEL: 802-362-1100
 WWW: NORTHERNSTUDIO.COM

DATE:
 DESIGNED BY:
 CHECKED BY:
 DATE:


SCALE:
 1/8" = 1'-0"


Schools in vicinity to 4221 4th Avenue, Whitehorse, YK

195



- ④ Canada School of Public Service
 School - 300 Main St
 approx. 926 metres


- ① Aurora Virtual School
 School - 500-4201 4 Ave
 approx. 164 metres



- ② Montessori Borealis
 ↳ approx. 481 metres
- ③ École Whitehorse Elementary School
 ↳ approx. 391 metres
- ⑤ Wood Street Centre
 ↳ approx. 829 metres

Elementary school · 526 Range Rd



Selkirk Elementary School

3.3 ★★★★★

Elementary school · 5 Selkirk St



Christ the King Elementary School

5.0 ★★★★★

Elementary school · 20 Nisutlin Dr



Vanier Catholic Secondary School

5.0 ★★★★★

Catholic school · 16 Duke Rd



Child Development Centre

5.0 ★★★★★

School · 1000 Lewes Boulevard



Northern Safety Network Yukon

School · 478 Range Road



Teen Parent Centre

School



196



Grey Mountain Primary School
Primary school · 186 Alsek Rd



Jack Hulland Elementary School
3.2 ★★★ (5)
Elementary school · 1304 Fir St



Happy Hearts Daycare
5.0 ★★★★★ (1)
School · 38 Lewes Blvd



Christ the King Secondary
School · 20 Nisutlin Dr



Natalja Westwood & Topsy Banksland
School · 520 College Dr



cnim
School · College Dr



Showing results 1 - 20



>

École Whitehorse Elementary School

3.7 ★★★★★ (2)

Elementary school ·

4181 4th Avenue Whitehorse YT Y1A 1J7 4 Ave

Approx 391 m.



Montessori Borealis

Preschool · 1191 Front St #101

approx. 481 m.



Wood Street Centre

4.3 ★★★★★ (3)

School · 5 Ave

approx 1829 m.



F. H. Collins Secondary School

3.3 ★★★★★ (2)

High school · 1001 Lewes Blvd



Elijah Smith Elementary School

5.0 ★★★★★ (1)

Elementary school · 1399 Hamifon Blvd



Takhini Elementary School

5.0 ★★★★★ (2)

