

NORTH KLONDIKE HIGHWAY

LEGEND

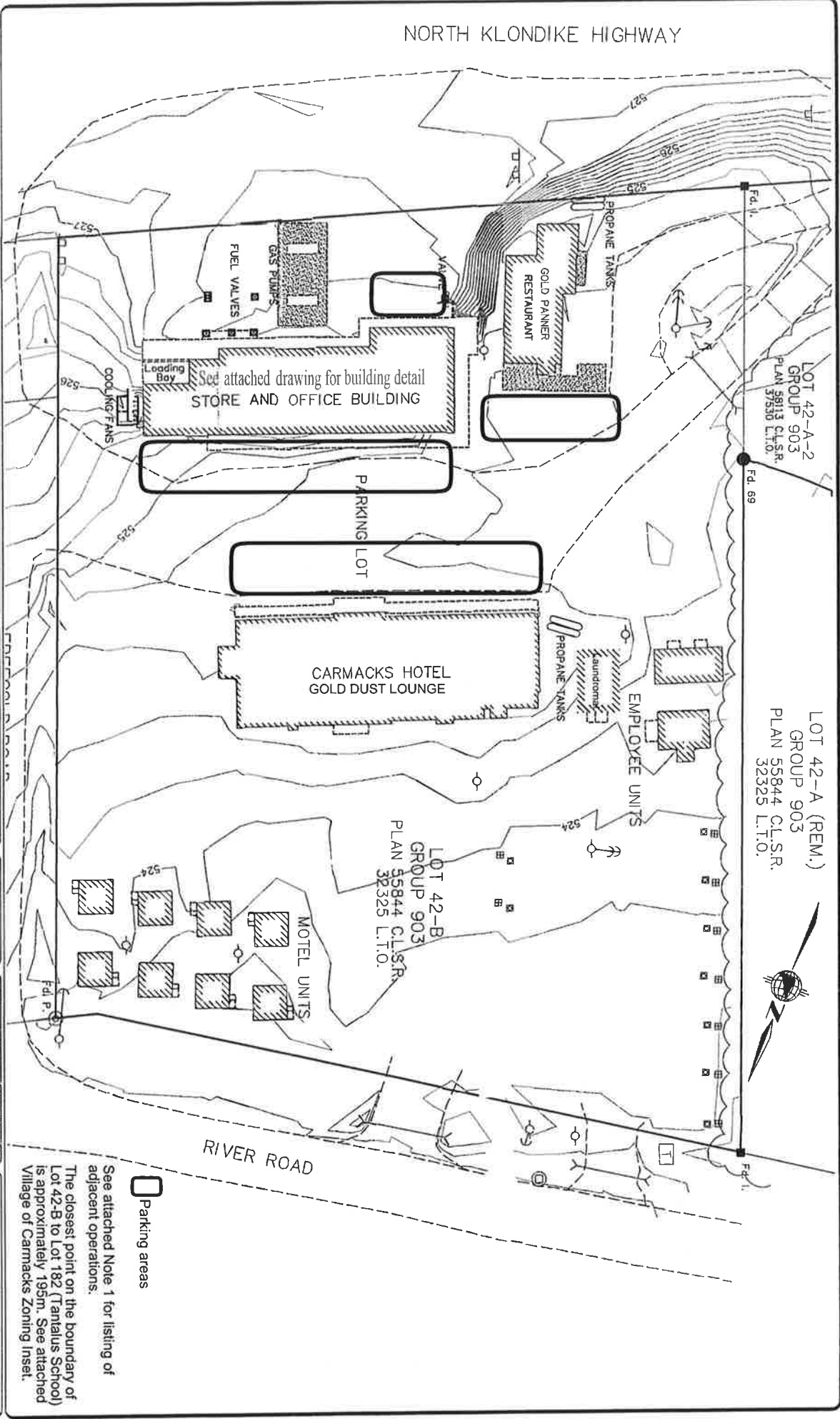
- RV Water Hookup
- RV Power Hookup
- Existing Sign
- Power Pole
- Concrete Pad
- MANHOLE
- CULVERT PIPE / LOT CORNER
- Guard Rail
- NITEL Box
- TREE LINE

NO.	REVISION	DATE

SCALE	DATE
1" = 50'	

PROJECT NUMBER: E12024
 SHEET NUMBER: 1 OF 10
YES

SITE PLAN
 CARMACKS HOTEL



Parking areas

See attached Note 1 for listing of adjacent operations.

The closest point on the boundary of Lot 42-B to Lot 182 (Tantalus School) is approximately 195m. See attached Village of Carmacks Zoning Inset.